



**Congressional  
Research Service**

Informing the legislative debate since 1914

---

# **Social Security Administration (SSA) Staffing Levels: Data Brief**

Updated April 23, 2026

**Congressional Research Service**

<https://crsreports.congress.gov>

R48725

## Contents

Introduction .....	1
Recent Staffing Levels .....	1
Historical Staffing Levels.....	3

## Figures

Figure 1. SSA Total Staff on Duty at the End of the Month.....	1
Figure 2. SSA Total Staff on Duty at the End of the Fiscal Year, by Data Source .....	4
Figure 3. SSA Total Work Years, by Type .....	5
Figure 4. State Disability Determination Services (DDS) Total Work Years .....	5

## Tables

Table 1. Estimated SSA Staff on Duty from Agency Contingency Plans, by Office .....	2
Table 2. Full-Time Equivalent (FTE) Employees, by Component.....	3
Table A-1. Historical Social Security Administration (SSA) Staffing Data, by Metric .....	7

## Appendixes

Appendix. Data Underlying Historical Staffing Figures and Additional Data .....	6
---	---

## Contacts

Author Information.....	11
-------------------------	----

## Introduction

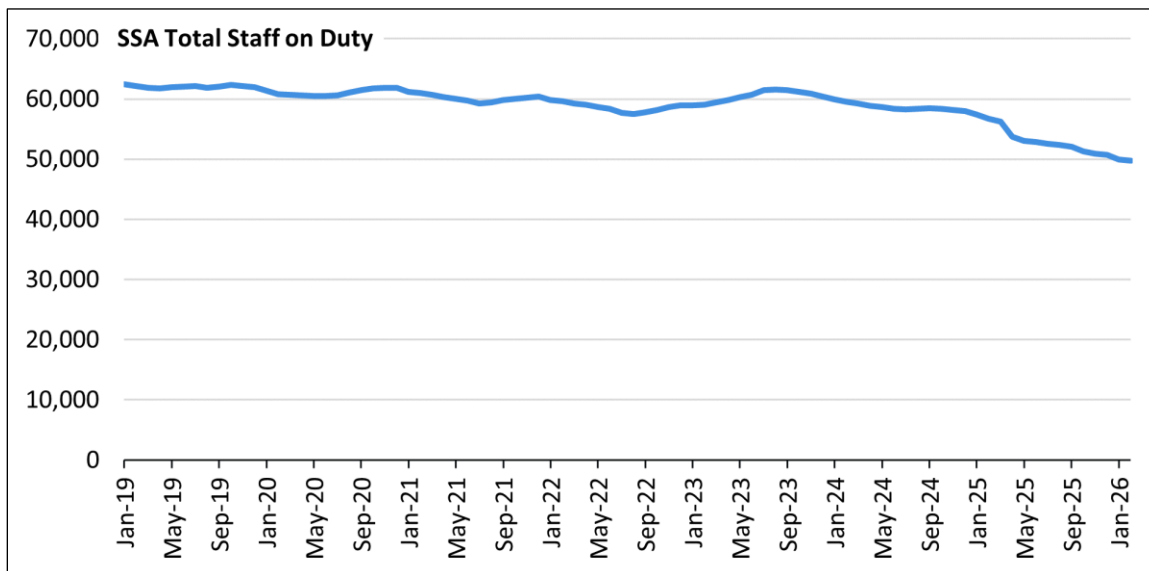
The Social Security Administration (SSA) is an independent agency in the executive branch headed by the commissioner of Social Security. It is responsible for administering Social Security and Supplemental Security Income, which are the nation’s primary income support programs for older adults and individuals with disabilities. SSA is also responsible for supporting the administration of a number of non-SSA programs and activities, such as portions of Medicare.

This report provides selected data on SSA’s recent and historical staffing levels—including state disability determination services (DDS) staffing levels—across a number of different metrics. The recent and historical periods used in this report are based, in part, on the public availability of data for each metric. For data on SSA’s recent and historical staffing levels by state or area, see CRS Report R48911, *Social Security Administration (SSA) Staffing Levels by State or Area: Data Brief*. For additional data on SSA’s staffing levels, see the Office of Personnel Management’s (OPM’s) *Federal Workforce Data* website at <https://data.opm.gov/>.

## Recent Staffing Levels

**Figure 1** shows SSA total staff on duty at the end of the month for January 2019-February 2026. SSA’s total staffing level at the end of February 2026 was 49,683.

**Figure 1. SSA Total Staff on Duty at the End of the Month**  
January 2019-February 2026. Figure is interactive in HTML report version.



**Source:** CRS analysis of data from the Office of Personnel Management’s (OPM’s) *Federal Workforce Data* site.

**Table 1** shows estimated SSA staff on duty from agency contingency plans, by office, for 2018-2025. Entries for some offices are blank (i.e., “—”) because the office did not exist at the time or no longer exists. SSA underwent several reorganizations in 2025 that closed some offices, created new offices, and transferred staff and functions to different offices. As a result, office-level staffing data for 2025 may not be comparable with previous years.

**Table I. Estimated SSA Staff on Duty from Agency Contingency Plans, by Office**  
2018-2025

Office	2018	2019	2020	2021	2022	2023	2024	2025
<b>Total</b>	<b>61,663</b>	<b>63,203</b>	<b>62,987</b>	<b>62,971</b>	<b>61,757</b>	<b>61,869</b>	<b>59,058</b>	<b>51,825</b>
Actuary	57	56	50	51	50	50	51	45
Analytics, Review, and Oversight	2,086	2,307	1,996	1,939	1,964	1,945	1,920	—
Budget, Finance, and Management/Finance and Management	931	916	880	884	891	870	859	679
Commissioner	25	31	27	29	27	28	32	11
Communications	155	146	142	141	148	150	144	32
Hearings Operations/Disability Adjudication	9,664	9,386	8,370	8,156	7,675	8,086	7,471	7,148
General Counsel	723	747	724	741	758	744	722	—
Civil Rights and Equal Opportunity (CREO)	—	—	—	—	67	143	148	—
Human Resources (HR)	412	413	381	420	416	845	854	286
HR/CREO—Reasonable Accommodations	203	216	212	218	213	213	213	171
Inspector General	493	529	542	523	529	534	515	442
Law and Policy	—	—	—	—	—	—	—	792
Legislation and Congressional Affairs	54	56	58	58	59	60	60	—
Operations	43,221	44,694	45,927	46,131	45,129	44,316	42,250	37,395
Risk and Quality	—	—	—	—	—	—	—	1,861
Retirement and Disability Policy	533	525	495	489	493	482	504	—
Security and Resiliency	—	—	—	—	—	—	—	372
Systems/Chief Information Officer	3,106	3,181	3,183	3,191	3,338	3,403	3,303	2,591
Transformation	—	—	—	—	—	—	12	—

**Source:** CRS analysis of data from Social Security Administration (SSA) agency contingency plans for 2018-2025.

**Notes:** “—” = not applicable. The staff counts are estimated for the end of September or the beginning of October of the year shown using actual staff counts from July or August of that year. The office *Operations* includes field offices, teleservice centers, regional offices, program service centers, and the Office of Central Operations. The *Inspector General* data for 2025 were calculated based on the difference between the higher staffing total at the beginning of the 2025 contingency plan and the lower total in the table at the end of the plan.

**Table 2** shows full-time equivalent (FTE) employees, by component, for FY2019-FY2026. An *FTE* is the equivalent of one employee working full-time for one year (2,080 hours), excluding overtime and lump-sum leave. The table separates out SSA’s Office of the Inspector General (OIG) from the rest of the agency. It also provides data on state DDSs, which are state agencies that conduct disability determinations and reviews on behalf of, and under agreements with, SSA. State DDS personnel are state employees, and their salaries and related activities are fully funded

by SSA, subject to certain conditions. The FY2026 data in the table are estimates from SSA’s FY2027 congressional budget justification.

**Table 2. Full-Time Equivalent (FTE) Employees, by Component**  
FY2019-FY2026

Component	FY2019	FY2020	FY2021	FY2022	FY2023	FY2024	FY2025	FY2026
<b>SSA Total (Excluding OIG)</b>	<b>60,470</b>	<b>59,574</b>	<b>59,195</b>	<b>57,568</b>	<b>58,485</b>	<b>57,998</b>	<b>54,063</b>	<b>51,205</b>
Field Offices/Field Operations	27,358	27,230	27,251	26,997	27,673	26,839	26,514	24,966
Teleservice Centers/Digital Services	4,307	4,567	4,790	4,167	4,078	3,947	3,865	5,231
Regional Offices	1,348	1,309	1,281	1,347	1,221	1,396	—	—
Program Service Centers and Office of Central Operations	9,467	9,463	9,548	9,345	9,348	9,214	8,916	7,268
Office of Hearings Operations/Disability Adjudication	9,335	8,549	7,970	7,553	7,465	7,512	8,845	6,764
Risk and Quality	—	—	—	—	—	—	—	1,865
Office of Systems/Chief Information Officer	3,084	3,048	3,138	3,074	3,285	3,293	3,081	2,943
Office of Analytics, Review, and Oversight	2,107	2,050	1,928	1,834	1,869	1,923	—	—
Office of General Counsel	720	691	721	704	698	713	—	—
Security and Resiliency	—	—	—	—	—	—	—	92
Law and Policy	—	—	—	—	—	—	1,050	879
Headquarters/Agency-Level Support	2,744	2,667	2,567	2,547	2,848	3,161	1,792	1,196
<b>State DDS</b>	<b>13,149</b>	<b>12,780</b>	<b>13,421</b>	<b>13,462</b>	<b>13,166</b>	<b>13,424</b>	<b>12,797</b>	<b>12,226</b>
<b>OIG</b>	<b>508</b>	<b>519</b>	<b>499</b>	<b>479</b>	<b>500</b>	<b>508</b>	<b>473</b>	<b>455</b>

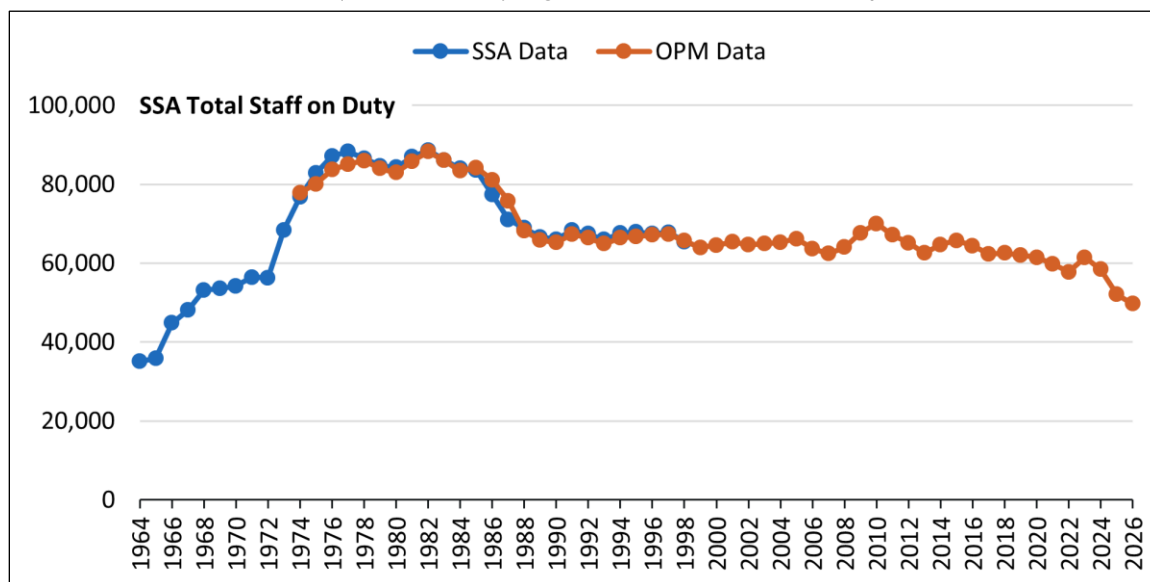
**Source:** CRS analysis of data from SSA, *Justification of Estimates for Appropriations Committees for Fiscal Year 2027*, and earlier editions.

**Notes:** OIG = Office of the Inspector General. DDS = Disability Determination Services. Subtotals may not sum to totals due to rounding. The FY2026 data are estimates from SSA’s FY2027 congressional budget justification. The SSA FTE data for FY2023-FY2026 include reimbursable work. (The SSA FTE data in the **Appendix** exclude reimbursable work.)

## Historical Staffing Levels

**Figure 2** shows SSA total staff on duty at the end of the fiscal year for FY1964-FY2026. The figure uses data from two different sources: SSA (FY1964-FY1998) and OPM (FY1974-FY2026). The OPM data for FY2026 are through February 2026.

**Figure 2. SSA Total Staff on Duty at the End of the Fiscal Year, by Data Source**  
FY1964-FY2026 (Selected Years). Figure is interactive in HTML report version.



**Source:** CRS analysis of data from Social Security Advisory Board, *How the Social Security Administration Can Improve Its Service to the Public*, September 1999; various SSA responses to questions for the record; Department of Health, Education, and Welfare, *Annual Report, 1967*, and earlier editions; OPM's *Federal Workforce Data* and *FedScope* systems; and the Internet Archive's *Federal Employment Data from the Office of Personnel Management*.

**Notes:** The FY2026 data are through February 2026.

**Figure 3** shows SSA total work years for FY1964-FY2026. SSA calculates *total work years* as the sum of FTE employment and overtime and lump-sum leave (i.e., the number of FTE employees plus the number of overtime and lump-sum leave work years). The figure displays two types of work-year metrics: LAE-only activities (FY1964-FY2026) and all activities (FY1975-FY2026). The metric *LAE-only activities* includes only those work years that are attributable to SSA's Limitation on Administrative Expenses (LAE) account or equivalent historical account. The LAE account is SSA's primary administrative appropriations account and funds SSA's activities related to Social Security, SSI, and portions of Medicare.<sup>1</sup> The metric *all activities* includes LAE work years in addition to work years that are attributable to reimbursable work,<sup>2</sup> SSA's OIG,<sup>3</sup> special temporary workloads,<sup>4</sup> and, prior to FY1998, certain other programs and activities for which SSA had administrative responsibilities.<sup>5</sup> **Figure 4** shows state DDS total work years for FY1980-FY2026. The FY2026 data in both figures are estimates from SSA's FY2027 congressional budget justification.

<sup>1</sup> See CRS Report R47097, *Social Security Administration (SSA): Trends in the Annual Limitation on Administrative Expenses (LAE) Appropriation*.

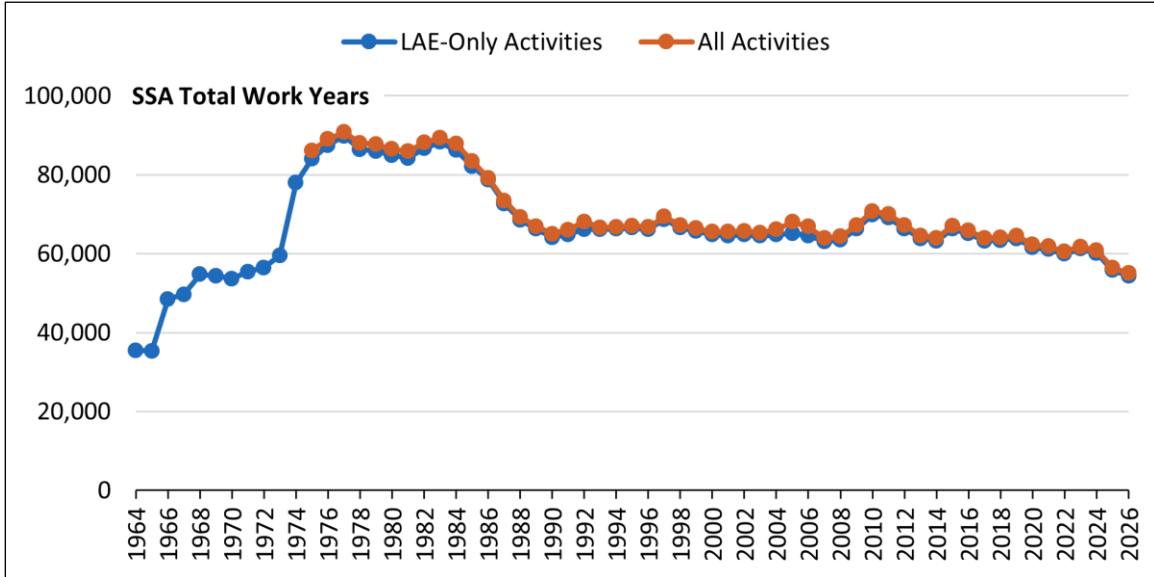
<sup>2</sup> *Reimbursable work* is work that SSA performs on behalf of another entity under a reimbursable agreement.

<sup>3</sup> SSA's Office of the Inspector General is funded primarily by a separate administrative appropriations account.

<sup>4</sup> Examples of special temporary workloads include SSA's work related to Medicare reform and the implementation of Part D in the mid-2000s, its work related to Medicare replacement cards in the mid-to-late 2010s, and its work related to recovery rebates (also known as economic impact payments or stimulus payments) during the COVID-19 pandemic.

<sup>5</sup> Examples of SSA's past administrative responsibilities include federal credit unions; all of Medicare; Black Lung (Part B); refugee assistance; Aid to Families with Dependent Children; the Low Income Home Energy Assistance Program; child support enforcement; and cash assistance for the aged, blind, and disabled in the territories.

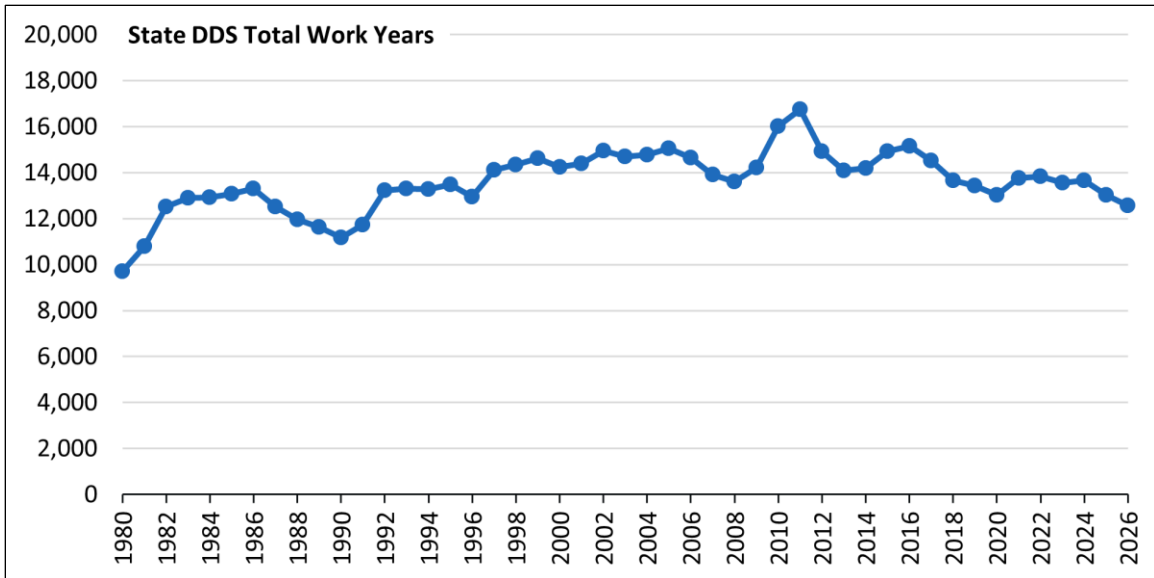
**Figure 3. SSA Total Work Years, by Type**  
 FY1964-FY2026 (Selected Years). Figure is interactive in HTML report version.



**Source:** CRS analysis of data from SSA’s FY2027 congressional budget justification and earlier editions; SSA, *Annual Statistical Supplement, 2024*, and earlier editions; SSA, *Annual Report to the Congress, 1994*, and earlier editions; various SSA responses to questions for the record; and the FY1966 President’s budget.

**Notes:** LAE = Limitation on Administrative Expenses. The FY2026 data are estimates from SSA’s FY2027 congressional budget justification.

**Figure 4. State Disability Determination Services (DDS) Total Work Years**  
 FY1980-FY2026, Figure is interactive in HTML report version.



**Source:** CRS analysis of data from SSA’s FY2027 congressional budget justification and earlier editions; various SSA responses to questions for the record; and General Accounting Office, *Social Security: Increasing Number of Disability Claims and Deteriorating Service*, November 1993.

**Notes:** The FY2026 data are estimates from SSA’s FY2027 congressional budget justification.

## **Appendix. Data Underlying Historical Staffing Figures and Additional Data**

**Table A-1** provides the data underlying the historical staffing figures shown in the body of the report. The table includes additional years of data for SSA total staff on duty (SSA data) and SSA total work years (LAE-only activities), as well as data on SSA full-time permanent staff, SSA and OIG FTEs, and state DDS total staff on duty. Data for some metrics are not available for all years shown below, because CRS was unable to find publicly available data for certain years. In some cases, the entries for certain metrics are blank (i.e., “—”) because the particular metric was not captured or produced by SSA at that time or the particular entity did not exist at that time (e.g., SSA’s OIG was established in the second half of FY1995).

**Table A-1. Historical Social Security Administration (SSA) Staffing Data, by Metric**

FY1936-FY2026 (Selected Years)

Fiscal Year	SSA Total Staff on Duty		SSA Full-Time Permanent Staff on Duty		SSA Total Work Years		SSA and OIG FTEs		State DDS	
	SSA Data	OPM Data	SSA Data	OPM Data	LAE-Only Activities	All Activities	SSA (Excluding OIG)	OIG	Total Staff on Duty	Total Work Years
1936	634	—	—	—	—	—	—	—	—	—
1937	5,748	—	—	—	—	—	—	—	—	—
1938	9,612	—	—	—	—	—	—	—	—	—
1939	9,661	—	—	—	—	—	—	—	—	—
1940	12,164	—	—	—	—	—	—	—	—	—
1941	12,682	—	—	—	9,037	—	—	—	—	—
1942	13,297	—	—	—	9,853	—	—	—	—	—
1943	10,585	—	—	—	9,502	—	—	—	—	—
1944	10,045	—	—	—	8,268	—	—	—	—	—
1945	10,629	—	—	—	8,269	—	—	—	—	—
1946	11,261	—	—	—	9,624	—	—	—	—	—
1947	12,830	—	—	—	10,616	—	—	—	—	—
1948	12,889	—	—	—	11,450	—	—	—	—	—
1949	12,854	—	—	—	11,069	—	—	—	—	—
1950	11,899	—	—	—	11,137	—	—	—	—	—
1951	14,821	—	—	—	13,301	—	—	—	—	—
1952	14,814	—	—	—	13,853	—	—	—	—	—
1953	14,623	—	—	—	14,402	—	—	—	—	—
1954	14,634	—	—	—	13,983	—	—	—	—	—
1955	18,514	—	—	—	16,363	—	—	—	27	—
1956	18,591	—	—	—	17,729	—	—	—	237	—
1957	22,472	—	—	—	21,984	—	—	—	491	—
1958	23,540	—	—	—	23,297	—	—	—	868	—
1959	26,322	—	—	—	25,207	—	—	—	1,142	—
1960	26,071	—	—	—	25,829	—	—	—	—	—

Fiscal Year	SSA Total Staff on Duty		SSA Full-Time Permanent Staff on Duty		SSA Total Work Years		SSA and OIG FTEs		State DDS	
	SSA Data	OPM Data	SSA Data	OPM Data	LAE-Only Activities	All Activities	SSA (Excluding OIG)	OIG	Total Staff on Duty	Total Work Years
1961	32,100	—	—	—	30,063	—	—	—	1,497	—
1962	35,304	—	—	—	34,741	—	—	—	—	—
1963	34,796	—	—	—	34,959	—	—	—	—	—
1964	35,056	—	—	—	35,448	—	—	—	—	—
1965	35,897	—	—	—	35,345	—	—	—	—	—
1966	44,774	—	—	—	48,473	—	—	—	2,114	—
1967	48,092	—	47,004	—	49,650	—	—	—	2,191	—
1968	53,142	—	52,459	—	54,770	—	—	—	2,411	—
1969	53,543	—	50,488	—	54,405	—	—	—	2,710	—
1970	54,164	—	50,048	—	53,648	—	—	—	2,711	—
1971	56,443	—	52,225	—	55,438	—	—	—	3,225	—
1972	56,260	—	52,485	—	56,443	—	—	—	4,400	—
1973	68,340	—	62,609	—	59,542	—	—	—	6,300	—
1974	76,762	77,811	71,187	68,763	77,956	—	—	—	10,300	—
1975	82,791	80,024	74,993	70,306	84,037	86,168	—	—	10,100	—
1976	87,125	83,632	77,920	71,979	87,487	89,045	—	—	9,300	—
1977	88,257	85,036	80,054	77,017	89,848	90,835	—	—	9,400	—
1978	86,563	85,948	77,684	77,428	86,449	88,088	—	—	9,600	—
1979	84,629	83,994	75,230	75,630	85,996	87,725	—	—	—	9,625
1980	84,269	82,931	74,498	74,271	84,937	86,539	—	—	—	9,701
1981	86,948	85,802	74,330	74,863	84,262	85,958	78,842	—	—	10,794
1982	88,611	88,267	74,880	74,820	86,640	88,163	82,000	—	—	12,513
1983	86,131	86,004	74,604	74,430	88,254	89,299	82,483	—	—	12,887
1984	83,980	83,398	73,944	72,047	86,185	87,864	79,951	—	—	12,924
1985	83,505	84,194	72,225	73,186	82,131	83,406	77,741	—	—	13,074
1986	77,358	81,113	68,962	71,596	78,746	79,225	75,494	—	—	13,302
1987	71,024	75,730	64,529	68,726	72,721	73,408	70,784	—	—	12,502
1988	68,908	68,116	63,029	61,903	68,558	69,286	66,835	—	—	11,963

Fiscal Year	SSA Total Staff on Duty		SSA Full-Time Permanent Staff on Duty		SSA Total Work Years		SSA and OIG FTEs		State DDS	
	SSA Data	OPM Data	SSA Data	OPM Data	LAE-Only Activities	All Activities	SSA (Excluding OIG)	OIG	Total Staff on Duty	Total Work Years
	1989	66,597	65,885	61,131	60,328	66,311	66,931	64,621	—	—
1990	65,978	65,161	61,067	60,281	64,155	65,025	62,836	—	—	11,177
1991	68,270	67,371	63,715	62,653	64,844	66,040	62,850	—	—	11,738
1992	67,398	66,362	62,398	61,538	66,164	68,135	64,324	—	—	13,225
1993	65,906	64,925	61,640	60,818	66,202	66,623	63,771	—	—	13,298
1994	67,590	66,362	62,434	61,161	66,259	66,741	64,017	—	14,325	13,267
1995	67,925	66,719	62,504	61,304	66,537	67,063	64,135	109	14,591	13,478
1996	67,398	67,132	62,133	61,294	66,154	66,726	63,418	247	14,298	12,938
1997	67,750	67,328	61,224	60,386	68,710	69,378	64,574	314	15,063	14,118
1998	65,407	65,629	59,943	59,719	66,540	67,210	63,339	388	15,563	14,330
1999	—	63,957	59,752	58,900	65,760	66,459	62,312	428	15,792	14,611
2000	—	64,521	60,434	59,322	64,771	65,521	61,698	517	15,659	14,231
2001	—	65,377	61,490	60,565	64,557	65,562	61,743	559	—	14,397
2002	—	64,648	61,914	60,791	64,829	65,742	62,214	564	—	14,947
2003	—	64,903	63,569	61,410	64,515	65,343	62,264	566	—	14,700
2004	—	65,258	63,186	61,882	64,764	66,154	62,513	594	—	14,772
2005	—	66,147	63,696	62,654	65,182	68,026	61,790	610	—	15,038
2006	—	63,647	61,692	61,394	64,604	66,878	61,468	608	—	14,653
2007	—	62,407	60,206	60,022	63,076	63,939	60,814	597	—	13,916
2008	—	63,990	61,920	61,486	63,485	64,358	60,456	583	15,361	13,605
2009	—	67,632	65,203	64,696	66,302	67,170	63,187	576	16,814	14,224
2010	—	69,963	67,548	66,666	69,891	70,758	66,398	583	18,268	16,021
2011	—	67,136	64,744	64,539	69,077	69,936	66,749	574	17,064	16,739
2012	—	65,113	62,943	62,599	66,333	67,208	63,760	569	16,075	14,913
2013	—	62,543	59,823	59,643	63,807	64,601	61,627	558	15,279	14,081
2014	—	64,684	62,956	61,946	63,230	64,006	60,105	539	16,966	14,187
2015	—	65,717	63,466	62,813	66,247	67,004	63,170	528	16,168	14,925

Fiscal Year	SSA Total Staff on Duty		SSA Full-Time Permanent Staff on Duty		SSA Total Work Years		SSA and OIG FTEs		State DDS	
	SSA Data	OPM Data	SSA Data	OPM Data	LAE-Only Activities	All Activities	SSA (Excluding OIG)	OIG	Total Staff on Duty	Total Work Years
2016	—	64,394	62,685	62,560	65,062	65,798	62,949	522	16,797	15,152
2017	—	62,297	61,250	60,879	63,222	63,957	60,664	512	15,458	14,522
2018	—	62,519	61,011	60,726	63,360	64,095	60,160	496	14,750	13,665
2019	—	61,991	60,450	60,170	63,828	64,576	60,470	508	14,906	13,429
2020	—	61,447	60,364	59,829	61,553	62,291	59,574	519	14,891	13,028
2021	—	59,808	58,952	58,582	61,112	61,830	59,195	499	15,297	13,758
2022	—	57,754	56,907	56,461	59,903	60,570	57,568	479	14,571	13,825
2023	—	61,410	60,026	59,912	61,225	61,771	58,293	500	15,343	13,554
2024	—	58,409	57,148	56,931	60,127	60,817	57,820	508	14,469	13,643
2025	—	52,045	—	51,157	55,805	56,444	53,906	473	13,700	13,017
2026	—	49,683	—	48,893	54,352	55,082	50,935	455	—	12,561

**Sources:** CRS analysis of data from Social Security Advisory Board, *How the Social Security Administration Can Improve Its Service to the Public*, September 1999; various SSA responses to questions for the record; Department of Health, Education, and Welfare, *Annual Report, 1970*, and earlier editions; Federal Security Agency, *Annual Report of the Federal Security Agency, 1952*, and earlier editions; Social Security Board, *Annual Report of the Social Security Board, 1945*, and earlier editions; OPM’s *Federal Workforce Data* and *FedScope* systems; the Internet Archive’s *Federal Employment Data from the Office of Personnel Management*; SSA, *Justification of Estimates for Appropriations Committees for Fiscal Year 2027*, and earlier editions; SSA, *Annual Statistical Supplement, 2024*, and earlier editions; SSA, *Annual Report to the Congress, 1994*, and earlier editions; Office of Management and Budget, *Appendix, Budget of the United States Government, Fiscal Year 1996*, and earlier editions; SSA, *SSA Weekly Operational Report Meeting*, April 25, 2025; SSA, “Total State DDS Employees by State FY2010 to FY2023”; SSA, Office of the Inspector General, *The Social Security Administration’s Progress in Reducing the Initial Disability Claims Backlog*, April 2014; SSA, “FY 2000 State Agency Operations Report,” and earlier editions; General Accounting Office (GAO), *More Diligent Followup Needed To Weed Out Ineligible SSA Disability Beneficiaries*, March 1981; U.S. Congress, House Committee on Ways and Means, *Committee Staff Report on the Disability Insurance Program*, 93<sup>rd</sup> Cong., 2<sup>nd</sup> sess., July 1974; and GAO, *Social Security: Increasing Number of Disability Claims and Deteriorating Service*, November 1993.

**Notes:** “—” = not available or not applicable. The data for *SSA Total Staff on Duty* for FY1936-FY1946 are for the Social Security Board, which was replaced by SSA in July 1946. For the metric *SSA Full-Time Permanent Staff on Duty*, the SSA data include seasonal employees, while the OPM data exclude seasonal employees. The data for *LAE-Only Activities* for FY1941-FY1962 are for the Bureau of Old-Age and Survivors Insurance. Prior to FY1979, the President’s budget referred to the LAE account as the Limitation on Salaries and Expenses account, the Salaries and Expenses account, or the Salaries account. The data for *LAE-Only Activities* and *SSA FTEs* exclude reimbursable work. (The SSA FTE data for FY2023-FY2026 in **Table 2** include reimbursable work.) The FY1972-FY1978 and FY2025 data for *State DDS Total Staff on Duty* are rounded. The FY2026 data for *SSA Total Staff on Duty* and *SSA Full-Time Permanent Staff on Duty* are through February 2026. The FY2026 data for *SSA Total Work Years*, *SSA and OIG FTEs*, and *State DDS Total Work Years* are estimates from SSA’s FY2027 congressional budget justification.

## **Author Information**

William R. Morton  
Specialist in Income Security

---

## **Disclaimer**

This document was prepared by the Congressional Research Service (CRS). CRS serves as nonpartisan shared staff to congressional committees and Members of Congress. It operates solely at the behest of and under the direction of Congress. Information in a CRS Report should not be relied upon for purposes other than public understanding of information that has been provided by CRS to Members of Congress in connection with CRS's institutional role. CRS Reports, as a work of the United States Government, are not subject to copyright protection in the United States. Any CRS Report may be reproduced and distributed in its entirety without permission from CRS. However, as a CRS Report may include copyrighted images or material from a third party, you may need to obtain the permission of the copyright holder if you wish to copy or otherwise use copyrighted material.