

# **Congressional Careers: Service Tenure and Patterns of Member Service, 1789-2021**

Updated January 5, 2021

**Congressional Research Service**  
<https://crsreports.congress.gov>

R41545

## Summary

The average service tenure of Members of the Senate and House of Representatives has varied substantially since 1789. This report presents data on Member tenure over time, analyzes factors that affect average tenure in any given Congress, and examines historical patterns of congressional service, including the distribution of years served in each Congress, and the cross-chamber experience of Representatives and Senators.

During much of the 19<sup>th</sup> century, the average tenure of Representatives and Senators remained relatively steady, with incoming Representatives generally averaging between two and three years of prior service in most Congresses, and the Senators averaging between three and five years. Beginning in the late 19<sup>th</sup> and through much of the 20<sup>th</sup> century, average tenure for Members in both chambers steadily increased. Senators' average years of prior service has increased from just under five years during the early 1880s to approximately 10 years in the most recent Congress. Similarly, the average tenure of Representatives has increased from approximately three years during the early 1880s to approximately nine years in the most recent Congress.

The average years of service for Members of the 117<sup>th</sup> Congress, as of January 3, 2021, when the Congress convened, was 8.9 years for the House and 11.0 years for the Senate. In comparison, the average years of service for Members of the 116<sup>th</sup> Congress, as of January 3, 2019, when the Congress convened, was 8.6 years for the House and 10.1 years for the Senate.

This report analyzes two factors that influence variation over time in the average years of service for Members of Congress: the decision of sitting Members whether or not to seek election to the next Congress, and the success rate of Members who do seek reelection. Observed increases in the proportion of Members seeking reelection and decreases in the proportion of Members defeated for reelection align with previous scholarly assessments of congressional history, which conclude that during the early history of Congress, turnover in membership was frequent and resignations were commonplace, and that during the 20<sup>th</sup> century, congressional careers lengthened as turnover decreased and Congress became more professionalized.

The report also examines two further issues related to Member tenure, including the distribution of Member service over time, as well as Members' cross-chamber experience. Although the average service tenure of Members has increased since Congress's early years, a substantial portion of Representatives and Senators in recent Congresses have served for six years or less in their respective chambers. With respect to cross-chamber experience, while a small proportion of Representatives historically have had previous Senate experience, a sizable percentage of Senators throughout congressional history have had previous House experience.

## Contents

Introduction .....	1
Methodology .....	1
Data .....	1
Average Service Tenure.....	2
House of Representatives.....	3
Senate.....	3
Factors Affecting Average Tenure.....	4
The Rate of Members Seeking Reelection .....	4
Reelection Success Rate .....	5
Discussion.....	6
Patterns of Congressional Service.....	8
Distribution of Service Experience.....	8
House of Representatives .....	8
Senate .....	8
Cross-Chamber Experience.....	12
Senators with Prior House Experience.....	12
Representatives with Prior Senate Experience.....	12
Amount of Cross-Chamber Experience.....	13
Concluding Observations .....	13

## Figures

Figure 1. Average Years of Prior Service in Chamber, Senators and Representatives .....	3
Figure 2. Percentage of Representatives Who Did Not Seek Reelection .....	5
Figure 3. Percentage of Representatives Defeated for Reelection .....	6
Figure 4. Distribution of Member Tenure, House of Representatives .....	10
Figure 5. Distribution of Member Tenure, Senate.....	11
Figure 6. Percentage of Members with Cross-Chamber Experience.....	12
Figure 7. Average Years of House Service Among Senators .....	13

## Contacts

Author Information .....	14
--------------------------	----

## Introduction

This report presents data on average Member tenure over time, analyzes several factors that affect tenure in any given Congress, and examines historical patterns of congressional service, including the distribution of years served within each Congress, and the cross-chamber experience of Representatives and Senators.

During much of the 19<sup>th</sup> century, the average tenure of Representatives and Senators remained relatively steady, with incoming Representatives generally averaging between two and three years of prior service in most Congresses, and Senators averaging between three and five years. Beginning in the late 19<sup>th</sup> and through much of the 20<sup>th</sup> century, average tenure for Members in both chambers steadily increased. The average years of service for Members of the 117<sup>th</sup> Congress, as of January 3, 2021, when the Congress convened, was 8.9 years for the House and 11.0 years for the Senate.

Two factors that affect average years of service are examined in this report: the percentage of Members choosing to seek reelection, and the success rate of Members who do seek reelection. The findings presented here align with scholarly assessments of congressional history, which conclude that during the early history of Congress, turnover in membership was frequent and resignations were commonplace. Many lawmakers in the 18<sup>th</sup> and early 19<sup>th</sup> centuries might be characterized as “citizen legislators,” holding full-time nonpolitical employment and serving in Congress on a part-time basis for a short number of years. During the 20<sup>th</sup> century, congressional careers lengthened as turnover decreased and Congress became more professionalized.

The report also examines two further issues related to Member tenure, including the distribution of Member service over time, as well as Members’ cross-chamber experience. Although the average tenure of Members has increased since the late 19<sup>th</sup> century, a substantial portion of Representatives and Senators in recent Congresses have served for six years or less in their respective chambers. With respect to cross-chamber experience, while a small proportion of Representatives have historically had previous Senate experience, a sizable percentage of Senators throughout congressional history have had previous House experience.

## Methodology

### Data

Data on the tenure of Members of Congress for the 1<sup>st</sup> through 115<sup>th</sup> Congresses are drawn from the *Biographical Directory of the United States Congress*,<sup>1</sup> which records each Member’s service in the House and Senate from the 1<sup>st</sup> Congress through the present. Specifically, each Member listed in the *Biographical Directory* was recorded, along with the beginning and ending dates of the Congresses in which the directory indicates they served. To identify any instances where a Member did not serve for the entire duration of a particular Congress, individual Member biographies contained in the *Biographical Directory* were consulted, in addition to the *Roster of United States Congressional Officeholders and Biographical Characteristics of the United States*

---

<sup>1</sup> See *Biographical Directory of the United States Congress*, at <http://bioguide.congress.gov/biosearch/biosearch.asp> (accessed December 17, 2018).

*Congress, 1789-1996*,<sup>2</sup> as well as the *Congressional Directory*<sup>3</sup> for evidence that a Member's service began after the opening day of a Congress, or ended prior to the last day of a Congress. Data for new Members of the 116<sup>th</sup>-117<sup>th</sup> Congresses come from the Clerk of the House and CQ Press publications.<sup>4</sup> Each Member's service in a given Congress in years is calculated by dividing their total days served in that Congress by 365.25. As of the beginning date of each Congress, each Member's years of total prior service in each chamber is calculated.

Data on Member tenure as described above are aggregated to generate a series of summary statistics for each chamber from the 1<sup>st</sup> through 117<sup>th</sup> Congresses. Statistics are calculated as of the first day of the Congress. For example, the average tenure of Senators in the 116<sup>th</sup> Congress is generated by first identifying those Senators who served during the opening day of the Congress (January 3, 2019), obtaining each Senator's total years of prior service in the Chamber as of the opening day of the Congress, and computing the average for the chamber.<sup>5</sup> Consequently, any changes in membership during the term arising from vacancies and replacements are not taken into account. In addition, the statistics reported on average tenure over time include prior service within the chamber, but do not include cross-chamber experience (i.e., years of Senators' House experience, or Representatives' Senate experience). Freshman Members in each chamber are considered to have zero years of prior chamber service.

## Average Service Tenure

As shown in **Figure 1** below, the average years of service of Members in both chambers has generally increased over time. The prior House service of incoming Representatives increased from an average of 2.5 years in the 19<sup>th</sup> century to 9.4 in the 21<sup>st</sup> to date; the average peaked at 10.3 years—just over five terms—during the 102<sup>nd</sup> (1991-1992), 110<sup>th</sup> (2007-2008), and 111<sup>th</sup> Congresses (2009-2010). Incoming Senators averaged 4.8 years of prior chamber service in the 19<sup>th</sup> century, and 11.2 years during the 21<sup>st</sup> century to date. This figure peaked at 13.1 years during the 111<sup>th</sup> Congress (2009-2010).

For both the House and Senate, the Congress with the fewest average years of prior experience was the 1<sup>st</sup>, as all Senators and Representatives necessarily had zero years of experience upon arrival. In the last 50 years, the Congress with the lowest average years of service among Representatives and Senators was the 97<sup>th</sup> Congress (1981-1982), in which incoming Representatives had an average of 7.4 years of prior service in the House (slightly more than 3.5 terms) and Senators had an average of 7.5 years of prior service in the Senate (1.25 terms).

---

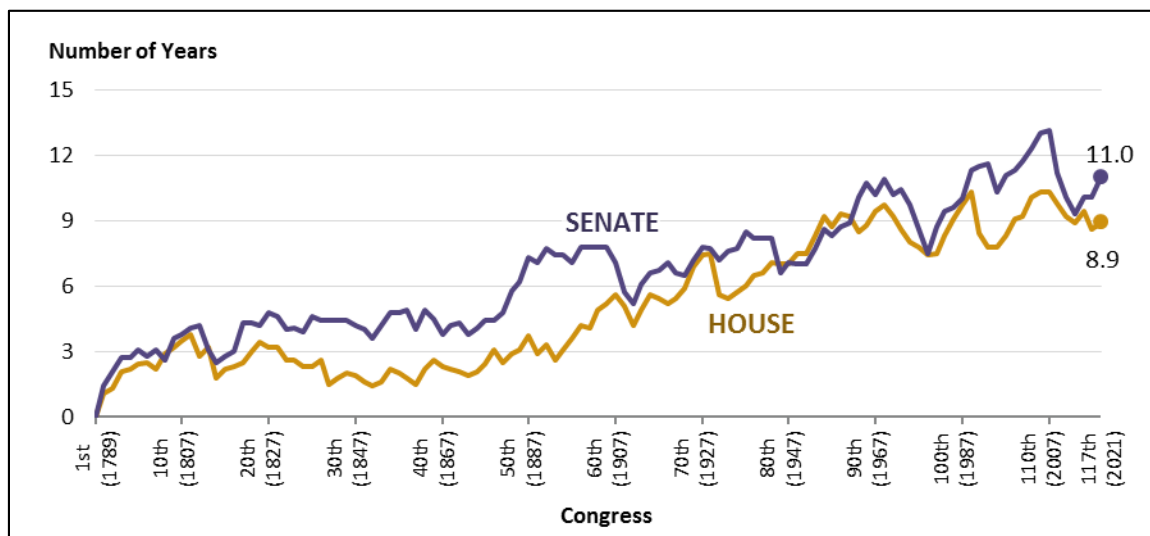
<sup>2</sup> Inter-university Consortium for Political and Social Research, and Carroll McKibbin. *Roster of United States Congressional Officeholders and Biographical Characteristics of Members of the United States Congress, 1789-1996: Merged Data* [computer file] 10<sup>th</sup> ICPSR ed. (Ann Arbor: MI: Inter-university for Political and Social Research [producer and distributor], 1997).

<sup>3</sup> *Official Congressional Directory*, 105<sup>th</sup>-115<sup>th</sup> Congress; available at <https://www.gpo.gov/fdsys/browse/collection.action?collectionCode=CDIR> (accessed December 21, 2020).

<sup>4</sup> CQ Roll Call, *Guide to the New Congress, 116<sup>th</sup> Congress*, November 12, 2018; and CQ Roll Call, *Guide to the 117<sup>th</sup> Congress*, December 9, 2020.

<sup>5</sup> For a variety of reasons (including deaths, resignations, and contested elections, among others), less than a full complement of Representatives and Senators were sworn in on the first day of a new Congress on a number of occasions throughout history. Consequently, statistics contained in this report may be calculated based on less than the full membership of each chamber if any vacancies existed on the opening day of the Congress.

**Figure 1. Average Years of Prior Service in Chamber, Senators and Representatives**  
1<sup>st</sup> through 117<sup>th</sup> Congresses



**Sources:** CRS analysis of *Biographical Directory of the United States Congress*, ICPSR, and proprietary data. Inter-university Consortium for Political and Social Research, and Carroll McKibbin, *Roster of United States Congressional Officeholders and Biographical Characteristics of Members of the United States Congress, 1789-1996: Merged Data* [computer file] 10<sup>th</sup> ICPSR ed. (Ann Arbor: MI: Inter-university Consortium for Political and Social Research [producer and distributor], 1997).

**Notes:** Opening year of each Congress is noted in parentheses.

## House of Representatives

As shown in **Figure 1**, during the 19<sup>th</sup> century (7<sup>th</sup> through 56<sup>th</sup> Congresses), the average service of Representatives remained relatively steady; during this time incoming Representatives averaged between 1.4 and 3.8 years of prior service.<sup>6</sup> Around the turn of the 20<sup>th</sup> century, the average began to increase, rising from just over four years at the beginning of the century, to approximately nine years in each of the three most recent prior Congresses. At the start of the 117<sup>th</sup> Congress, the average years of prior service for Representatives was 8.9 years.

Among Members serving in the 117<sup>th</sup> Congress, Don Young is the longest-serving Representative, with approximately 48 years of service in the House as of the beginning of the Congress.

## Senate

Historically, the average years of service among Senators has been similar to that of Representatives, with relative stability during much of the 19<sup>th</sup> century, followed by a steady increase beginning in the late 19<sup>th</sup> and early 20<sup>th</sup> century. As shown in **Figure 1**, for much of the

<sup>6</sup> Data on service tenures of the earliest Congresses are purposely omitted from this discussion. Average service tenure in the 18<sup>th</sup> century Congresses (1<sup>st</sup> through 6<sup>th</sup>) is artificially constrained by the inability of anyone to have begun his service prior to the 1<sup>st</sup> Congress. While this artificial constraint is theoretically active well into the early 19<sup>th</sup> century (for example, no Member of the 11<sup>th</sup> Congress could have had more than 20 years of prior service), it is a practical analytical constraint only for the first five or seven Congresses. After that, aggregate service tenures stabilize in line with observed trends during the remainder of the first half of the 19<sup>th</sup> century. Furthermore, average tenure decreases in the House in the fifth and eighth Congresses and in the seventh and ninth Senates, which indicates that while the artificial constraint may be theoretically suppressing the aggregate service average, it is no longer a dominant practical factor.

19<sup>th</sup> century, the average prior service of Senators remained roughly constant at approximately four years. Beginning in the 1880s, the average began to rise steadily, predating the similar rise in the House by about 20 years. After falling dramatically for a short time in the 1910s, the average years of prior service in the Senate began to rise steadily again, tracking the rise in average years of service among Representatives. At the start of the 117<sup>th</sup> Congress, incoming Senators averaged 11.0 years of prior Senate service.

Among Members serving in the 117<sup>th</sup> Congress, the longest-serving Senator is Patrick Leahy, with 46 years of service in the Senate as of the beginning of the 117<sup>th</sup> Congress.

## Factors Affecting Average Tenure

Among the many factors that may affect variation in Member seniority over time, two are examined in this report: the decision of sitting Members whether or not to seek reelection to the next Congress, and the success rate of Members who do seek reelection.<sup>7</sup> Each of these components is discussed below in greater detail.

### The Rate of Members Seeking Reelection

The average years of prior service for Representatives and Senators is influenced by Member choices about whether or not to seek reelection to the chamber. If a large number of Members in one Congress choose not to seek reelection, many Members of the subsequent Congress will necessarily be first-term Members with no prior service. Members might not seek reelection for any number of reasons; common historical reasons include seeking another office, appointment to other government positions, retirement from public service, and death.

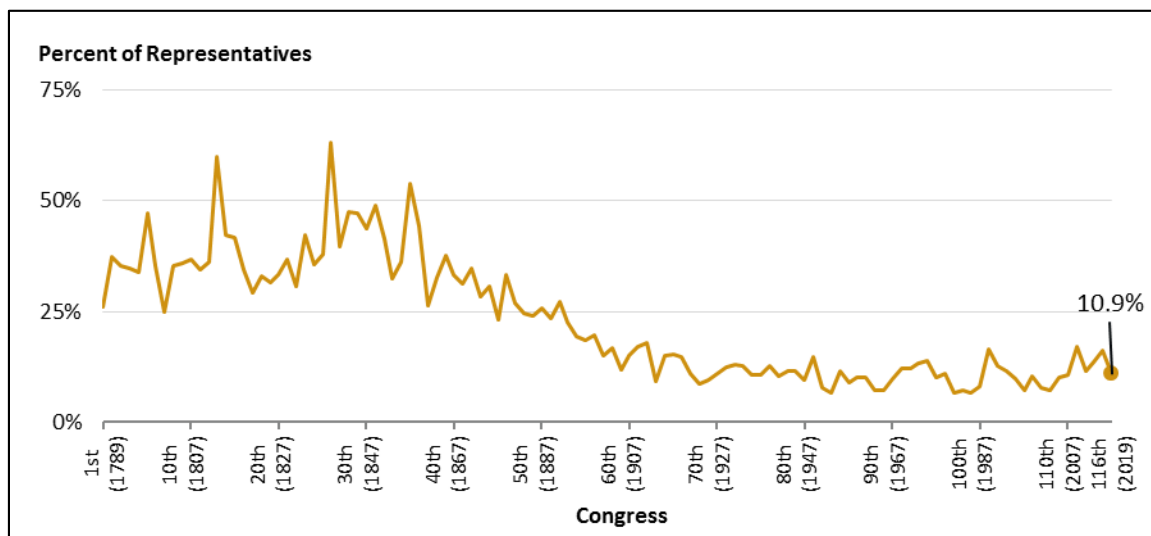
**Figure 2** plots the percentage of Representatives in each Congress who did not seek reelection to the following Congress.<sup>8</sup>

---

<sup>7</sup> Short-term changes in average service can also be affected by the departure of a relatively small number of long-serving Members. For example, Senators Robert Byrd and Edward Kennedy both passed away during the 111<sup>th</sup> Congress and had Senate service of 50 and 46.2 years, respectively. This helps explain, in part, the decline in average service tenure in the Senate between the 111<sup>th</sup> and 112<sup>th</sup> Congresses.

<sup>8</sup> Senators are excluded from this analysis due to the difficulty in definitively assessing whether Senators sought reelection prior to the enactment of the 17<sup>th</sup> amendment, which provided for direct Senate elections.

**Figure 2. Percentage of Representatives Who Did Not Seek Reelection**  
1<sup>st</sup> through 116<sup>th</sup> Congresses



**Sources:** CRS analysis of *Biographical Directory of the United States Congress*, ICPSR, and proprietary data. Inter-university Consortium for Political and Social Research, and Carroll McKibbin, *Roster of United States Congressional Officeholders and Biographical Characteristics of Members of the United States Congress, 1789-1996: Merged Data* [computer file] 10<sup>th</sup> ICPSR ed. (Ann Arbor: MI: Inter-university Consortium for Political and Social Research [producer and distributor], 1997).

**Notes:** Opening year of each Congress is noted in parentheses.

As shown in **Figure 2**, the rate of Representatives not seeking reelection dropped dramatically beginning in the mid-19<sup>th</sup> century. Prior to the 1860s, it was common for 40% of Representatives or more not to seek reelection, and prior to the 46<sup>th</sup> Congress (1879-1880) this figure never fell below 25%. After declining in the latter part of the 19<sup>th</sup> century, the rate at which Members have not sought reelection has remained relatively steady during the 20<sup>th</sup> and 21<sup>st</sup> centuries, averaging approximately 11.5% during this time period.

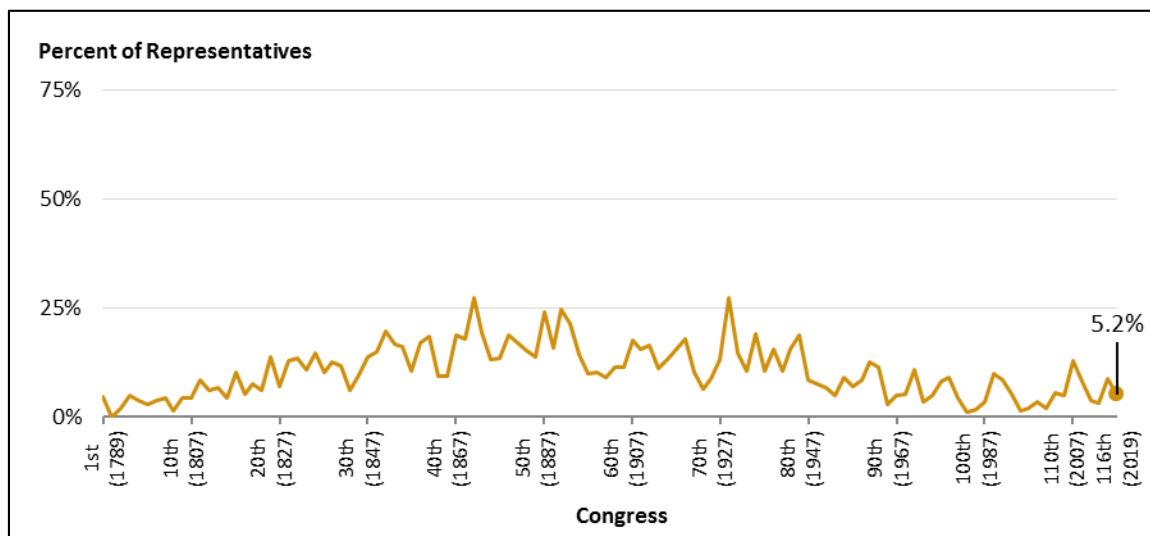
## Reelection Success Rate

In addition to the rate at which Members seek reelection, a second important factor in understanding variation in average seniority in Congress is the success rate among Members who do seek reelection.<sup>9</sup> **Figure 3** plots the percentage of Representatives in each Congress who sought reelection to the next Congress but were defeated, either in their attempt to gain their party's nomination or in the general election for office.<sup>10</sup>

<sup>9</sup> Note that the two variables—Member decisions to seek reelection and whether or not the Member is defeated for reelection—are tied to one another; the decision to seek reelection may be based, in part, on an estimate of the likelihood of success. Accordingly, a decrease in the percentage of Members who are defeated for reelection may be indicative of greater trends, but in some cases may reflect an increase in Members choosing not to stand for reelection when their reelection prospects are diminished.

<sup>10</sup> Senators are again excluded due to the difficulty in assessing Senate elections prior to the 17<sup>th</sup> amendment.



**Figure 3. Percentage of Representatives Defeated for Reelection**1<sup>st</sup> through 116<sup>th</sup> Congresses

**Sources:** CRS analysis of *Biographical Directory of the United States Congress*, ICPSR, and proprietary data. Inter-university Consortium for Political and Social Research, and Carroll McKibbin, *Roster of United States Congressional Officeholders and Biographical Characteristics of Members of the United States Congress, 1789-1996: Merged Data* [computer file] 10<sup>th</sup> ICPSR ed. (Ann Arbor: MI: Inter-university Consortium for Political and Social Research [producer and distributor], 1997).

**Notes:** Opening year of each Congress is noted in parentheses.

As shown in **Figure 3**, the percentage of Representatives defeated for reelection generally increased during the 19<sup>th</sup> century, and later declined over the course of the 20<sup>th</sup> century. There was significant short-term variation resulting from high-turnover elections, including the 1872, 1890, 1894, and 1932 elections (to the 43<sup>rd</sup>, 52<sup>nd</sup>, 54<sup>th</sup>, and 72<sup>nd</sup> Congresses, respectively).

## Discussion

The data presented in **Figure 2** and **Figure 3** align with scholarly assessments of congressional history, which conclude that during the early history of Congress, turnover in membership was frequent and resignations were commonplace, and that during the 20<sup>th</sup> century, congressional careers lengthened as turnover decreased and Congress became more professionalized.

Many lawmakers in the 18<sup>th</sup> and early 19<sup>th</sup> centuries might be characterized as “citizen legislators,” holding full-time nonpolitical employment and serving in Congress on a part-time basis for a short number of years. According to political scientist Randall Ripley, “In the pre-modern Congress, Members came and went rapidly. There were few senior Members. Life in Washington was not pleasant; Congress did not seem very important.”<sup>11</sup>

According to H. Douglas Price, the lack of incentives for Members to retain their seats explains the high turnover in those early years of the House. Power was fluid in the House. The Speaker

<sup>11</sup> Randall B. Ripley, *Congress: Process and Policy*, 4<sup>th</sup> ed. (New York: W.W. Norton and Company, 1988), p. 50. See also H. Douglas Price, who wrote that “the distinguished Senators of the 1<sup>st</sup> Congress set the early career pattern for that chamber: They fled the Capitol ... almost as fast as humanly possible.... Career data on the early Senate is a morass of resignations, short-term appointees, elective replacements.... There are no notable careers in terms of service.” H. Douglas Price, “Congress and the Evolution of Legislative ‘Professionalism,’” in Norman Ornstein, ed., *Congress in Change* (New York: Praeger Publishers, 1995), p. 5.

controlled committee appointments, changes in party control were common, and seniority in the chamber was not yet as valuable as it would later become.<sup>12</sup>

After the Civil War, circumstances changed and precipitated a rise of careerism in Congress.<sup>13</sup> Legislative careers became professionalized, and the concept of the “citizen legislator” became a thing of the past.<sup>14</sup> Some observers attribute this to institutional changes in the structure of congressional elections, such as the strengthening of the party system and the emergence of one-party states and districts following the Civil War.<sup>15</sup> Others have identified redistricting practices as a potential factor in lengthening careers.<sup>16</sup> Recent scholarship has pointed to historical electoral reforms, such as adoption of the secret ballot and nominating primaries, as contributing to the increases in average tenure around the turn of the 20<sup>th</sup> century.<sup>17</sup>

Other scholars have pointed to institutional changes in congressional operations, such as the rise of the seniority system, the development of the committee system, and new advantages of incumbency that allowed Members to generate publicity, serve constituents, and receive support in organizing their offices and forming agendas that help them be effective legislators.<sup>18</sup> In addition, the development of transportation technology made travel between Washington and a Member’s home district less burdensome, potentially increasing the attractiveness of a longer career.

Finally, the emergence of national problems raised a legislative career to a new level of importance. As the federal government took on new responsibilities, both after the Civil War and in the early 20<sup>th</sup> century, Members may have begun to view congressional office as relatively more desirable than state office, and this may have contributed to many Members’ desire to remain in Congress.<sup>19</sup>

---

<sup>12</sup> Ibid., p. 16.

<sup>13</sup> David Brady, Kara Buckley, and Douglas Rivers, “The Roots of Careerism in the House of Representatives,” *Legislative Studies Quarterly*, vol. 24, no. 4 (November 1999), p. 490.

<sup>14</sup> John R. Hibbing, “The Modern Congressional Career,” *The American Political Science Review*, vol. 85 (June 1991), pp. 404-425; Howard Baker, “‘Citizen Legislators’ Would Be Better,” *Washington Post*, July 8, 1983, p. 21; and Saul Pett, “Baker Seeks to Change Face of Congress,” *Los Angeles Times*, August 21, 1983, pp. 2, 15.

<sup>15</sup> Robert G. Brookshire and Dean F. Duncan, “Congressional Career Patterns and Party Systems,” *Legislative Studies Quarterly*, vol. 8, no. 1 (February 1983), pp. 65-78; Nelson Polsby, “The Institutionalization of the U.S. House of Representatives,” *The American Political Science Review*, vol. 41, no. 1 (March 1968).

<sup>16</sup> Seth C. McKee, “The Effects of Redistricting on Voting Behavior in Incumbent U.S. House Elections, 1992-1994,” *Political Research Quarterly*, vol. 61, no. 1 (March 2008), pp. 122-133; Jamie L. Carson, Erik J. Engstrom, and Jason M. Roberts, “Redistricting, Candidate Entry, and the Politics of Nineteenth-Century U.S. House Elections,” *American Journal of Political Science*, vol. 50, no. 2 (April 2006), pp. 283-293.

<sup>17</sup> Jamie L. Carson and Jason M. Roberts, *Ambition, Competition, and Electoral Reform: The Politics of Congressional Elections Across Time* (Ann Arbor: University of Michigan Press, 2013); Erik J. Engstrom and Samuel Kernell, *Party Ballots, Reform, and the Transformation of America’s Electoral System* (New York: Cambridge University Press, 2014); Scott A. MacKenzie, “Life Before Congress: Using Pre-Congressional Experience to Assess Competing Explanations for Political Professionalism,” *Journal of Politics*, vol. 77, no. 2 (April 2015), pp. 505-518.

<sup>18</sup> On the seniority system, see Polsby, “The Institutionalization of the U.S. House Representatives”; Michael Abram and Joseph Cooper, “The Rise of Seniority in the House of Representatives,” *Polity*, vol. 1, no. 1 (August 1968), pp. 52-85; on the development of the committee system, see Walter Kravitz, “Evolution of the Senate’s Committee System,” *Annals of the American Academy of Political Science*, vol. 411 (January 1974), pp. 27-38; George B. Galloway, “Development of the Committee System in the House,” *The American Historical Review*, vol. 65, no. 1 (October 1959), pp. 17-30; on the development of Member resources, see Richard Fenno, *Homestyle: House Members and Their Districts* (Boston: Little, Brown, 1978); Bruce Cain, John Ferejohn, and Morris Fiorina, *The Personal Vote: Constituency Service and Electoral Independence* (Cambridge, MA: Harvard University Press, 1987).

<sup>19</sup> Samuel Kernell, “Toward Understanding 19<sup>th</sup> Century Congressional Careers: Ambition, Competition, and

# Patterns of Congressional Service

## Distribution of Service Experience

Examining the aggregate average years of Member service in a given Congress reveals little about the underlying distribution of service among individual Members. **Figure 4** and **Figure 5** present the distribution of service experience of Representatives and Senators, respectively, from the 1<sup>st</sup> through 117<sup>th</sup> Congresses. For each Congress, the figures plot the percentage of each chamber made up of the following four categories of Members: first-term Members with no prior chamber service, returning Members with six years of chamber service or fewer, returning Members with between 6 and 12 years of chamber service, and Members with more than 12 years of chamber service.

### House of Representatives

As shown in **Figure 4**, from Congress's early years and throughout the 19<sup>th</sup> century, it was not uncommon for 40% or more of the House to be made up of Members with no prior experience in the chamber; in nine different Congresses during the century, Representatives with no previous House experience made up half of the chamber or more.<sup>20</sup> As the proportion of incoming freshman Members began to decline around the turn of the 20<sup>th</sup> century, the proportion of Representatives with more than 12 years of service began to increase. Members in this category made up approximately 6% of the House in the 57<sup>th</sup> Congress (1901-1902); the figure peaked at approximately 34% in the 111<sup>th</sup> Congress (2009-2010). As of the opening day of the 117<sup>th</sup> Congress, approximately 25% of the chamber was made up of Representatives with more than 12 years of House service. Still, despite a general increase over time in longer-tenured Members, a plurality of the House was made up of Members with six or fewer years of chamber experience during several recent Congresses.

### Senate

Long-term trends in the distribution of Senate service generally mirror those in the House. In contrast to the House, the Senate has generally had a smaller proportion of Members with no prior chamber experience, even during Congress's earlier history. The comparatively smaller proportion of freshman Senators can be explained by the Senate's staggered terms; because only one-third of the chamber's seats are up for election at a time, the amount of turnover resulting from a single election year is limited. As can be seen in **Figure 5**, for much of congressional history, the single largest group of Senators has been those with six years or fewer spent in the chamber.

For much of the early history of Congress, relatively few Senators served for more than 12 years; this group never exceeded 10% of the chamber until the 50<sup>th</sup> Congress (1887-1888). However, the percentage in this category grew during the next few Congresses, and despite some fluctuation, generally increased over much of the 20<sup>th</sup> and (to date) 21<sup>st</sup> centuries. The 103<sup>rd</sup> Congress (1993-1994) marks the high point for Senators serving more than 12 years; this group of Senators made

---

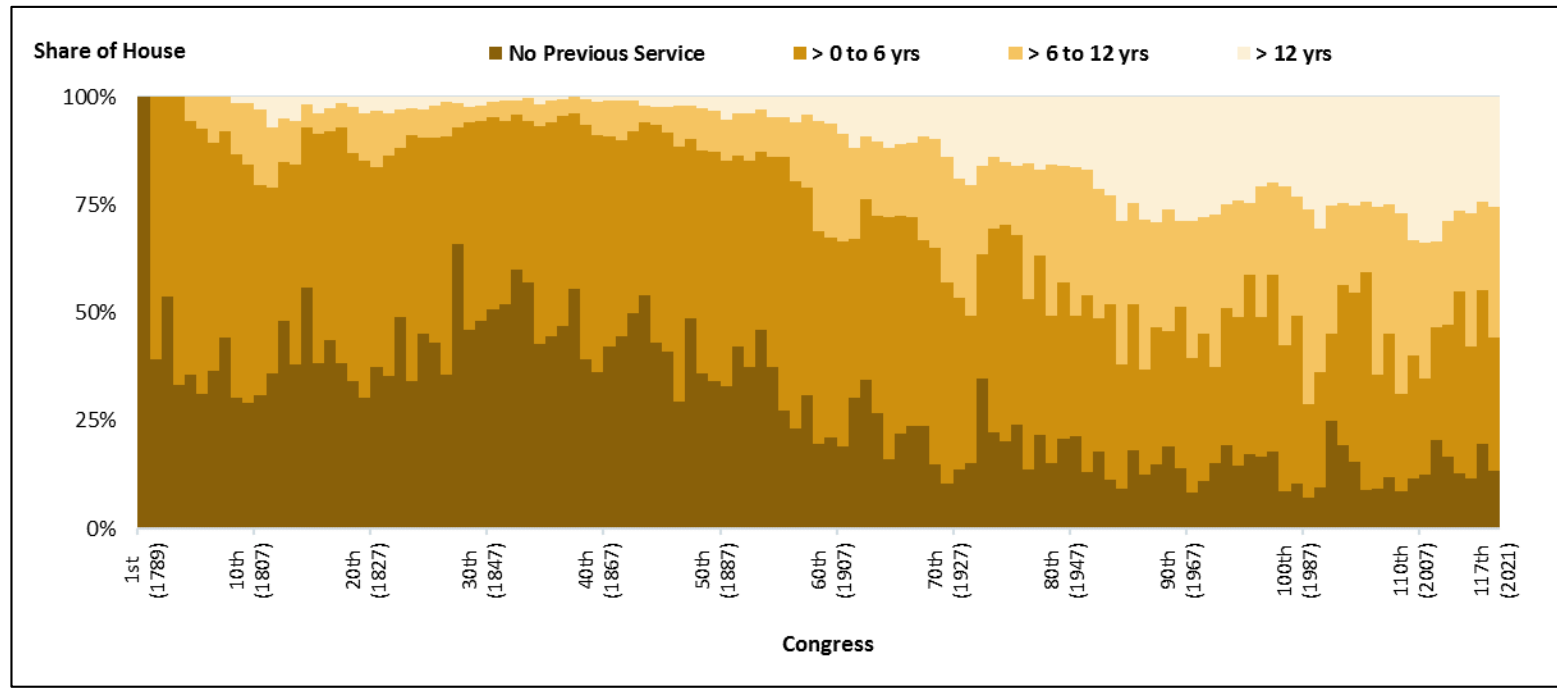
Rotation," *American Journal of Political Science*, vol. 21, no. 4 (November 1977), pp. 669-693; Joseph Schlesinger, *Ambition and Politics: Political Careers in the United States* (Chicago: Rand McNally, 1966).

<sup>20</sup> This includes the 15<sup>th</sup> (1817-1818), 28<sup>th</sup> (1843-1844), 31<sup>st</sup> (1849-1850), 32<sup>nd</sup> (1851-1852), 33<sup>rd</sup> (1853-1854), 34<sup>th</sup> (1855-1856), 38<sup>th</sup> (1863-1864), 43<sup>rd</sup> (1873-1874), and 44<sup>th</sup> (1875-1876) Congresses.

up 47% of the chamber. As of the opening day of the 117<sup>th</sup> Congress, Members in this category make up 32% of the chamber.

**Figure 4. Distribution of Member Tenure, House of Representatives**

1<sup>st</sup> through 117<sup>th</sup> Congresses

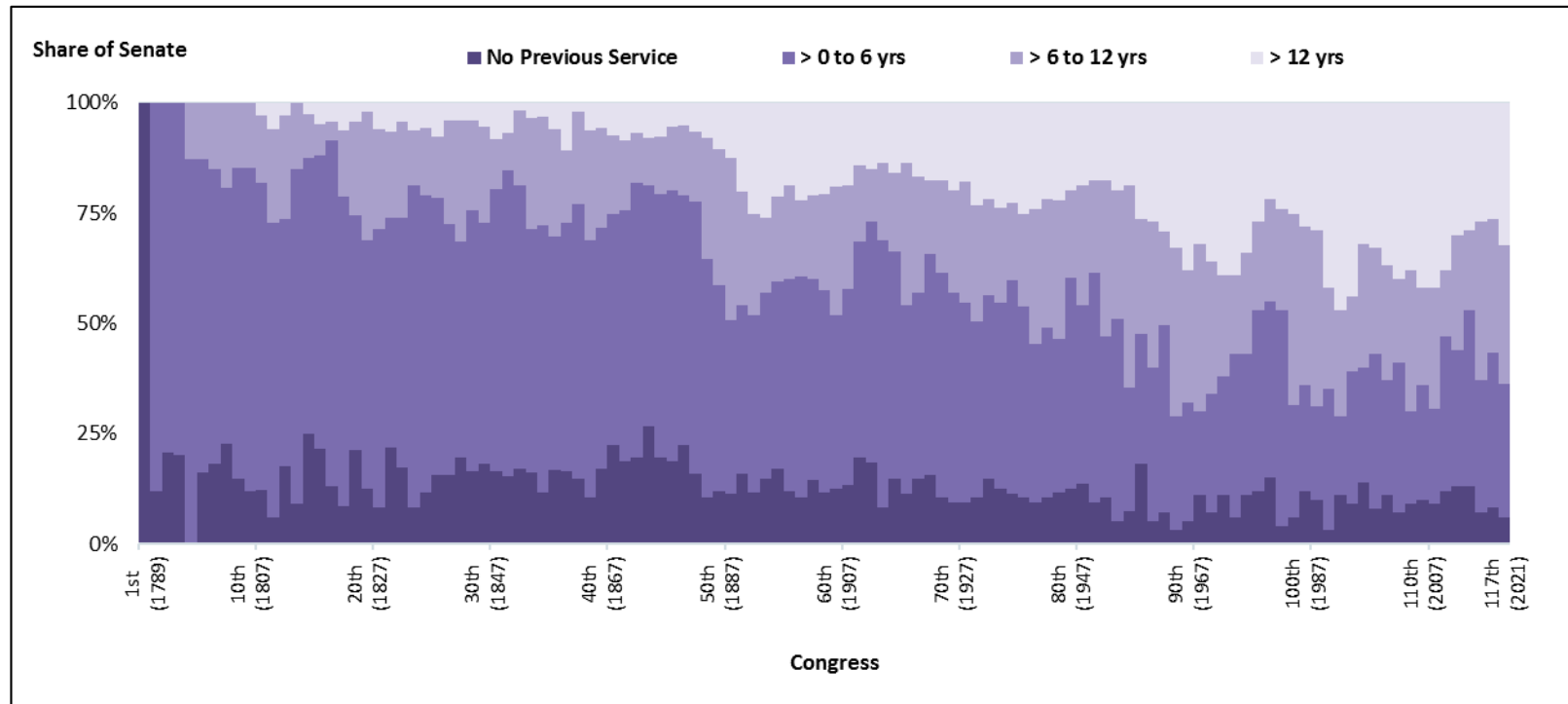


**Sources:** CRS analysis of *Biographical Directory of the United States Congress*, ICPSR, and proprietary data. Inter-university Consortium for Political and Social Research, and Carroll McKibbin, *Roster of United States Congressional Officeholders and Biographical Characteristics of Members of the United States Congress, 1789-1996: Merged Data* [computer file] 10<sup>th</sup> ICPSR ed. (Ann Arbor: MI: Inter-university Consortium for Political and Social Research [producer and distributor], 1997).

**Notes:** Opening year of each Congress is noted in parentheses.

**Figure 5. Distribution of Member Tenure, Senate**

1<sup>st</sup> through 117<sup>th</sup> Congresses



**Sources:** CRS analysis of *Biographical Directory of the United States Congress*, ICPSR, and proprietary data. Inter-university Consortium for Political and Social Research, and Carroll McKibbin, *Roster of United States Congressional Officeholders and Biographical Characteristics of Members of the United States Congress, 1789-1996: Merged Data* [computer file] 10<sup>th</sup> ICPSR ed. (Ann Arbor: MI: Inter-university Consortium for Political and Social Research [producer and distributor], 1997).

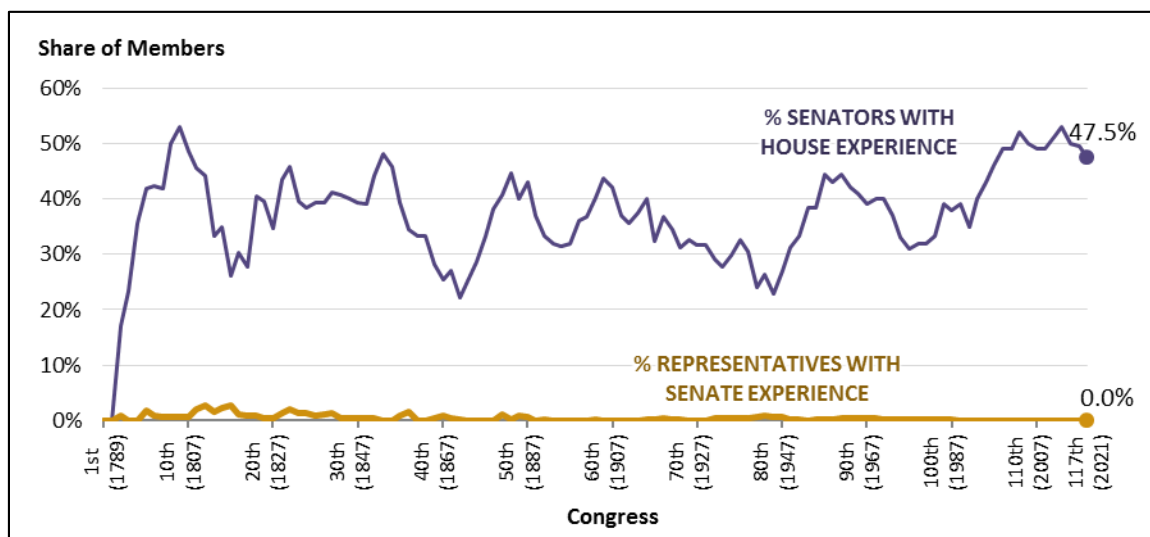
**Notes:** Opening year of each Congress is noted in parentheses.

## Cross-Chamber Experience

A second issue related to patterns of congressional service is cross-chamber experience of Senators and Representatives. While Senators have infrequently gone on to serve in the House, Representatives who subsequently serve in the Senate have been common throughout U.S. history. **Figure 6** plots the percentage of Representatives and Senators with previous experience in the other chamber from the 1<sup>st</sup> through 117<sup>th</sup> Congress.

**Figure 6. Percentage of Members with Cross-Chamber Experience**

1<sup>st</sup> through 117<sup>th</sup> Congresses



**Source:** CRS analysis of *Biographical Directory of the United States Congress*, ICPSR, and proprietary data. Inter-university Consortium for Political and Social Research, and Carroll McKibbin, *Roster of United States Congressional Officeholders and Biographical Characteristics of Members of the United States Congress, 1789-1996: Merged Data* [computer file] 10<sup>th</sup> ICPSR ed. (Ann Arbor: MI: Inter-university Consortium for Political and Social Research [producer and distributor], 1997).

**Notes:** Opening year of each Congress is noted in parentheses.

### Senators with Prior House Experience

As shown in **Figure 6**, throughout American history, a sizable proportion of Senators have arrived with prior service in the House, and the proportion has remained within a fairly constant range over time. After Congress's initial formation (when prior experience in one chamber was not possible), the proportion of Senators with House experience fluctuated between 20% and 45% for much of congressional history. In recent history, more than half of Senators serving at the start of the 109<sup>th</sup> (2005-2006), 113<sup>th</sup> (2013-2014), and 114<sup>th</sup> (2015-2016) Congresses had previous House experience. At the start of the 117<sup>th</sup> Congress, 47 of 99 Senators (47.5%) had previously served in the House.

### Representatives with Prior Senate Experience

Historically, a small but declining number of Members have served in the House of Representatives after serving in the Senate. **Figure 6** also plots the percentage of Representatives in each Congress who had previously served in the Senate.

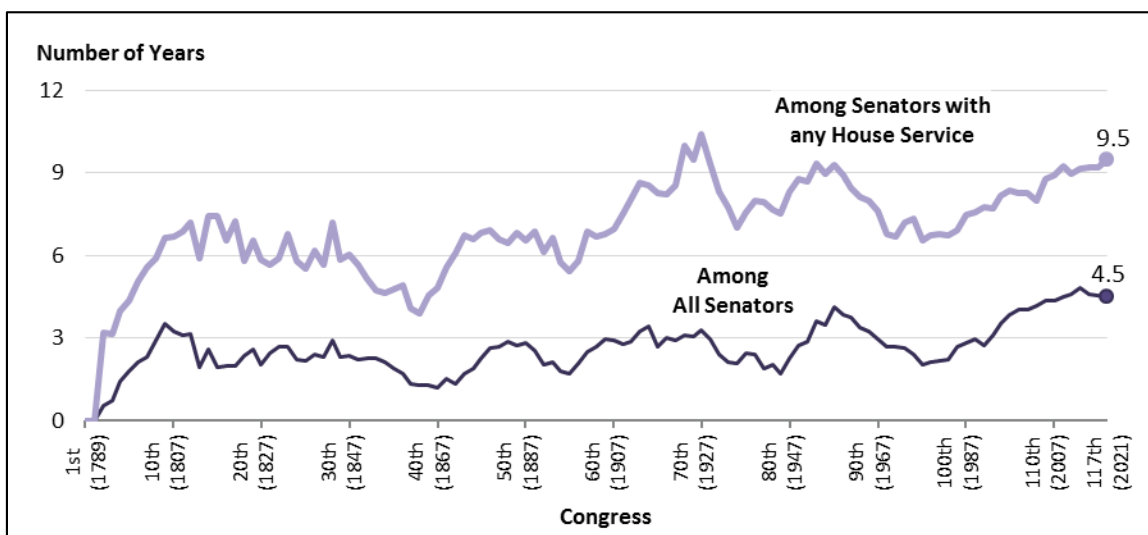
As can be seen in **Figure 6**, prior to the 1840s, it was common for several Representatives to have previously served in the Senate. This group included such notable figures as Henry Clay, and former President John Quincy Adams. Over time, it became less common for Representatives to have Senate experience. The last Representative to have previously served in the Senate was Claude Pepper, who served in the Senate from 1936 until 1951, and in the House from 1963 until 1989.

### Amount of Cross-Chamber Experience

A related question is how much prior House experience, on average, Senators have. **Figure 7** plots the average years of House service among Senators, by Congress. The bottom line is the average amount of House service among all Senators who began a given Congress; the top line is the average amount of House service among Senators who previously served in the House.

**Figure 7. Average Years of House Service Among Senators**

1<sup>st</sup> through 117<sup>th</sup> Congresses



**Sources:** CRS analysis of *Biographical Directory of the United States Congress*, ICPSR, and proprietary data. Inter-university Consortium for Political and Social Research, and Carroll McKibbin, *Roster of United States Congressional Officeholders and Biographical Characteristics of Members of the United States Congress, 1789-1996: Merged Data* [computer file] 10<sup>th</sup> ICPSR ed. (Ann Arbor: MI: Inter-university Consortium for Political and Social Research [producer and distributor], 1997).

**Notes:** Opening year of each Congress is noted in parentheses.

As shown in **Figure 7**, Senators with prior House experience typically averaged between five and nine years in the House prior to serving in the Senate. In the 117<sup>th</sup> Congress, the 47 Senators with prior House service spent an average of 9.5 years in the House—four-and-three-quarter terms—prior to serving in the Senate.

## Concluding Observations

Aggregate statistics on Member service tenures tend to disguise the variety of congressional service records found among individual Members. Some Members have very short tenures of service and choose not to seek reelection; other Members have long tenures that end after reelection defeat. At the aggregate level, average careers have become longer, but a great deal of variation in the length of congressional careers still persists.



Additionally, the institutional and policy contexts that have shaped Member decisions to seek or not seek reelection, and succeed or fail when seeking reelection, are not static factors. Just as the institutional contexts of elections and congressional operations have developed since the 19<sup>th</sup> century, they continue to change in the contemporary Congress. To the degree that patterns of congressional service in part reflect the incentives provided to Members by these institutional factors, it is likely that the patterns of Member service tenure will also continue to change. Similarly, the continued development of the institutional environment suggests that there is no way to predict how the patterns of service tenure will change; just as seemingly stable 19<sup>th</sup> century patterns rapidly changed toward the end of the century, so could the service tenure patterns we observe today.

## **Author Information**

Sarah J. Eckman  
Analyst in American National Government

Amber Hope Wilhelm  
Visual Information Specialist

## **Acknowledgments**

Former CRS analysts Matthew E. Glassman and William T. Egar authored previous versions of this report. The listed author updated this report and is available to respond to inquiries on the subject from congressional clients.

---

## **Disclaimer**

This document was prepared by the Congressional Research Service (CRS). CRS serves as nonpartisan shared staff to congressional committees and Members of Congress. It operates solely at the behest of and under the direction of Congress. Information in a CRS Report should not be relied upon for purposes other than public understanding of information that has been provided by CRS to Members of Congress in connection with CRS's institutional role. CRS Reports, as a work of the United States Government, are not subject to copyright protection in the United States. Any CRS Report may be reproduced and distributed in its entirety without permission from CRS. However, as a CRS Report may include copyrighted images or material from a third party, you may need to obtain the permission of the copyright holder if you wish to copy or otherwise use copyrighted material.