



**Congressional  
Research Service**

Informing the legislative debate since 1914

---

# Deficits and Debt: Economic Effects and Other Issues

**-name redacted-**

Analyst in Public Finance

Updated November 21, 2017

**Congressional Research Service**

7-....

[www.crs.gov](http://www.crs.gov)

R44383

## Summary

The federal government incurs a budget deficit (also known as a net deficit) when its total outgoing payments (outlays) exceed the total money it collects (revenues). If instead federal revenues are greater than outlays, then the federal government generates a surplus. Deficits are measured over the course of a defined period of time—in the case of the federal government, a fiscal year.

Debt measurements may be taken at any point in time and represent the accumulation of all previous government borrowing activity, from private citizens, institutions, foreign governments, and other parts of the federal government. Federal debt increases when there are net budget deficits and outflows made for federal credit programs, which combine to represent debt held by the public. Federal debt also rises through increases in intragovernmental debt, which is generated by trust fund surpluses that are used to finance other government activity.

Federal budgeting practices create a system where deficits and debt are interdependent: budget deficits increase federal debt levels, which in turn increase future net deficits. The nature of the relationship between deficits and debt varies depending on the type of debt considered. Budget deficits are the principal contributor to debt held by the public.

The contribution of deficits to intragovernmental debt is less certain than their contribution to debt held by the public. All else equal, increases in net trust fund deficits will lead to increases in total budget deficits but decreases in intragovernmental debt.

The interest payments made on publicly held debt instruments contribute directly to federal deficits. Holders of federal debt are compensated by receiving interest payments from Treasury. Intragovernmental debt does not contribute to future deficits.

The combination of persistent budget deficits and a large and increasing federal debt has generated discussions over the long-term sustainability of current budget projections. Federal budget deficits have declined from 9.8% of gross domestic product (GDP) in FY2009 to 3.5% of GDP in FY2017. However, recent estimates forecast that the government will run deficits in every year through FY2027. Federal debt totaled \$20.245 trillion at the end of FY2017, which as a percentage of GDP (105.9%) was its highest value since the end of World War II. There was \$14.673 trillion (or 76.7% of GDP) in debt held by the public at the end of FY2017.

Over time, persistent budget deficits can hamper economic growth. Deficits represent an intertemporal transfer from later generations to the current one, as money borrowed now will eventually require repayment with interest. Federal debt, either publicly held or intragovernmental, is funded through private capital. In the absence of federal debt, a portion of such funding would likely have been used on private investment projects that could increase the future productive capabilities of the economy. Large or rapidly increasing debt levels could also make the economy more susceptible to a recession, although that dynamic has not manifested itself in the United States.

Federal debt is constrained by the willingness of investors to finance borrowing. While the amount of federal borrowing investors will finance may be affected by economic growth and other factors, real federal debt cannot increase indefinitely. There are no signs that such “fiscal space” will be exhausted in the short term. However, the consequences of exhausted fiscal space may be worth considering when examining the medium- and long-term trajectory of the federal budget.

## Contents

Introduction .....	1
Background .....	1
What Is a Deficit?.....	1
What Is the Debt?.....	2
Comparing Debt Held by the Public and Intragovernmental Debt .....	2
Deficit and Debt Interaction .....	3
How Deficits Contribute to Debt .....	4
How Debt Contributes to Deficits.....	5
Deficits, Debt, and the Economy.....	6
How the Economy Contributes to Deficits .....	6
How the Economy Contributes to Debt .....	7
How Deficits and Debt Contribute to the Economy.....	8
Short-Run Effects.....	8
Long-Run Effects.....	8
Deficit and Debt Outlook .....	9

## Figures

Figure 1. Federal Debt, FY1947-FY2017 .....	4
Figure 2. Total and Primary Federal Budget Outcomes, FY1947-FY2017.....	6
Figure 3. Economic and Federal Budget Outcomes, FY1947-FY2017.....	7

## Tables

Table 1. Features of Debt Held by the Public and Intragovernmental Debt.....	3
--	---

## Contacts

Author Contact Information .....	10
----------------------------------	----

## Introduction

The combination of persistent budget deficits and a large and increasing federal debt has generated discussions over the long-term sustainability of current budget projections. Federal budget deficits have declined from 9.8% of gross domestic product (GDP) in FY2009 to 3.5% of GDP in FY2017. However, recent estimates forecast that the government will run deficits (i.e., federal expenditures will exceed revenues) in every year through FY2026. Federal debt totaled \$20.245 trillion at the end of FY2017, and as a percentage of GDP is at its highest value since the end of World War II; \$14.673 trillion of that debt was held by the public. This report explores distinctions in the concept and composition of deficits and debt and explains how those two measures interact with each other and the general economy.

## Background

### What Is a Deficit?

A deficit describes one of the three possible outcomes for the federal budget. Unlike many state and local governments, the federal government has no statutory balanced-budget requirement. The federal government incurs a deficit (also known as a net deficit) when its total outgoing payments (outlays) exceed the total money it collects (revenues). If instead federal revenues are greater than outlays, then the federal government generates a surplus. A balanced budget describes the case where federal receipts equal federal expenditures.<sup>1</sup> The size of a deficit or surplus is equal to the difference between the levels of spending and receipts. Deficits are measured over the course of a defined period of time—in the case of the federal government, a fiscal year.<sup>2</sup>

Federal budget outcomes incorporate both “on-budget” activities, which represent the majority of federal taxes and spending, and “off-budget” government activities, which include revenues and outlays from Social Security trust funds and the Postal Service. For federal credit programs, the subsidy cost of government activities is included in deficit and surplus calculations.<sup>3</sup>

The federal government is estimated to have incurred a deficit of \$666 billion in FY2017, equivalent to 3.5% of GDP. From FY1947 to FY2017, the average net deficit equaled 2.1% of annual GDP.<sup>4</sup> In FY2017, that amount had a dollar value of \$396 billion. Over the FY1947-FY2017 period, the government generated a surplus on 12 occasions: seven times from FY1947-

---

<sup>1</sup> For a more thorough discussion of budget concepts, see Office of Management and Budget, *FY 2017 Budget: Analytical Perspectives*, May 2017.

<sup>2</sup> As compared to the calendar year, the federal fiscal year runs from October of the previous year through September of the current year. For example, FY2018 began on October 1, 2017, and will end on September 30, 2018.

<sup>3</sup> The Federal Credit Reform Act of 1992 (P.L. 101-58) defines subsidy costs as “the estimated long-term cost to the government of a loan guarantee, calculated on a net present value basis, excluding administrative costs.” Subsidy costs therefore represent a projection of the final cost to the government of a credit program, and not the inflow or outflow of money for the activity. For more information about subsidy costs and their effect on the federal budget, see CRS Report R44193, *Federal Credit Programs: Comparing Fair Value and the Federal Credit Reform Act (FCRA)*, by (name redacted).

<sup>4</sup> Except where otherwise noted, all deficit and debt figures will be expressed as a percentage of GDP.

FY1960, in FY1969, and in each year from FY1998 through FY2001. In every other year of the period, the federal government incurred a net deficit.<sup>5</sup>

## What Is the Debt?

The federal debt level represents the total amount of money that the government owes to its creditors, which include private citizens, institutions, foreign governments, and other parts of the federal government. Debt measurements may be taken at any point in time and represent the accumulation of all previous government borrowing activity. Federal debt increases when there are net budget deficits, outflows made for federal credit programs (net of the subsidy costs already included in deficit calculations), and increases in intragovernmental borrowing.

Federal debt calculations also include the cost of federal credit programs.<sup>6</sup> Federal credit programs include loans issued for college tuition payments, small business programs, and other activities the government may seek to support. In those cases, debt levels increase as additional loans are granted, and decrease as money for such programs is repaid.

Intragovernmental debt is generated when trust funds, revolving funds, and special funds receive money from tax payments, fees, or other revenue sources that is not immediately needed to make payments. In those cases, the surpluses are used to finance other government activities, and Government Account Series (GAS) securities are issued to the trust fund. GAS securities may then be redeemed when trust fund expenditures exceed revenue levels. *Intragovernmental debt may be thought of as money that one part of the government owes another part.*

The Department of the Treasury is responsible for managing federal debt. The primary objective of Treasury's debt management strategy is to fulfill the government's borrowing needs at the lowest cost over time.<sup>7</sup> Treasury finances federal borrowing activities by issuing government-backed securities that generate interest payments for their owners. Treasury securities are typically sold to the public through an auction process, and have maturity periods (the length of time which they are held before repayment) of anywhere from several weeks to 30 years.<sup>8</sup>

## Comparing Debt Held by the Public and Intragovernmental Debt

Federal debt may be divided into two major categories: (1) debt held by the public, which is the sum of accrued net deficits and outstanding money from federal credit programs; and (2) intragovernmental debt. As of September 30, 2017, the amount of federal debt outstanding was \$20.245 trillion, with 72.5% of that debt held by the public and 27.5% held as intragovernmental debt.<sup>9</sup> **Table 1** summarizes the characteristics of debt held by the public and intragovernmental debt.

---

<sup>5</sup> Office of Management and Budget, Fiscal Year 2018 Historical Tables, Table 1.1, available at <https://www.whitehouse.gov/sites/default/files/omb/budget/fy2018/assets/hist.pdf>.

<sup>6</sup> For more information about the accounting methods used in deficit and debt calculations, see CRS Report R43811, *Cash Versus Accrual Basis of Accounting: An Introduction*, by (name redacted) and CRS Report R44002, *Cash Versus Accrual Accounting: Tax Policy Considerations*, by (name redacted) and (name redacted) .

<sup>7</sup> U.S. Department of the Treasury, *Duties & Functions of the U.S. Department of the Treasury*, available at <http://www.treasury.gov/about/role-of-treasury/>.

<sup>8</sup> For more information about Treasury's debt management practices, see CRS Report R40767, *How Treasury Issues Debt*, by (name redacted) .

<sup>9</sup> Unless otherwise noted, federal debt totals are taken from U.S. Treasury, Monthly Statement of the Public Debt, September 2017, available at <http://treasurydirect.gov/govt/reports/pd/mspd/2017/opds092017.pdf>.

**Table I. Features of Debt Held by the Public and Intragovernmental Debt**

	Publicly Held Debt	Intragovernmental Debt
Origin	Budget deficits and the federal loan portfolio	Federal trust fund surpluses
Ownership	Individuals and institutions (domestic and foreign); state and local governments; foreign governments	Federal government accounts
Debt outstanding	\$14.673 trillion (72.5%)	\$5.571 trillion (27.5%)
Share of marketable securities	\$14.176 trillion (96.6%)	\$0.024 trillion (0.4%)
Financial market presence	Debt issuances may compete for private assets exchanged in the financial market	Debt issuances do not appear in public markets and thus do not compete for private assets

**Source:** U.S. Treasury, *Monthly Statement of the Public Debt*, September 2017: available at <http://treasurydirect.gov/govt/reports/pd/mspd/2017/opds092017.pdf>.

**Notes:** Debt values as of September 30, 2017.

Individuals, firms, the Federal Reserve, state and local governments, and foreign governments are eligible to purchase publicly held debt. Such debt may be acquired directly through the auction process from which most publicly held debt is initially sold or on the secondary market if the debt is deemed “marketable”, or eligible for resale.<sup>10</sup> The total amount of publicly held debt outstanding was \$14.673 trillion as of September 30, 2017.

The majority of publicly held debt is marketable, and includes all Treasury Notes, Bonds, Bills, Treasury Inflation Protected Securities (TIPS), and Floating Rate Notes (FRNs) issued by Treasury. Nonmarketable debt held by the public is comprised of U.S. Savings Bonds, State and Local Government Securities (SLGS), and other, smaller issues. As of September 30, 2017, 96.6% of publicly held issues, or \$14.176 trillion, was marketable.

Intragovernmental debt is held by components of the federal government. Intragovernmental debt issuances are almost exclusively nonmarketable, as marketable debt comprised only \$0.024 trillion (0.4%) of the \$5.571 trillion in total intragovernmental debt on September 30, 2017. The majority of nonmarketable intragovernmental debt was held by trust funds devoted to Social Security and military and federal worker retirement. Marketable intragovernmental debt is composed primarily of debt held by the Federal Financing Bank, which is a government corporation created to reduce the cost of federal borrowing.

Since intragovernmental debt is held only in government accounts, such debt cannot be accessed by the institutions outside the federal government. Conversely, the bonds that finance publicly held debt activity may compete for assets in private and financial markets. Public debt issues may be a particularly attractive collateral option on the secondary market if the federal government is perceived as a safe credit risk.

## Deficit and Debt Interaction

Federal budgeting practices create a system where deficits and debt are interdependent; budget deficits increase federal debt levels, which in turn increase future net deficits because of the need

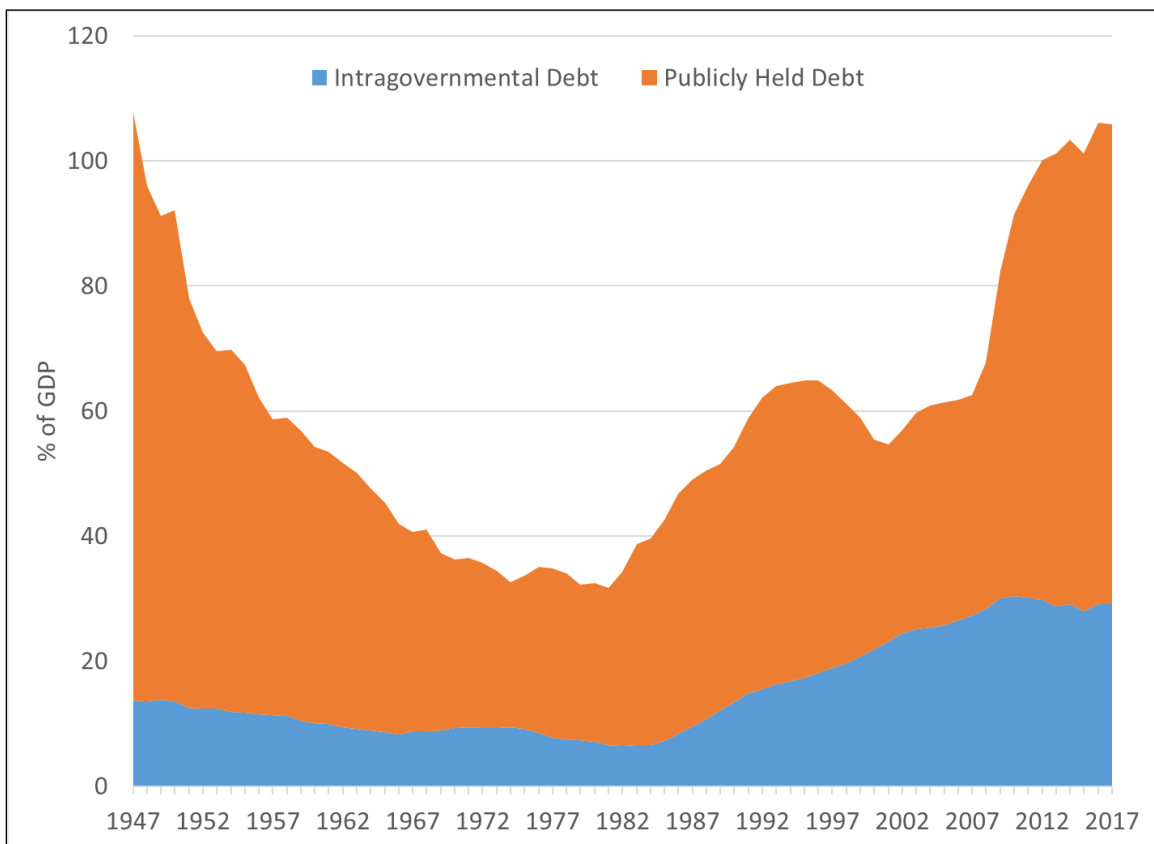
<sup>10</sup> The Banking Act of 1935 (P.L. 74-305) prohibited the Federal Reserve from purchasing Treasury securities directly (at auction). The Federal Reserve may purchase Treasury securities on the secondary market.

to service higher interest payments on the nation’s debt. The nature of the relationship between deficits and debt varies depending on the type of debt considered. This section describes the relationship between federal deficits and debt.

## How Deficits Contribute to Debt

Budget deficits are the principal contributor to debt held by the public. In order to finance budget deficits, Treasury sells debt instruments. The value of those debt holdings (which include interest payments) represents the vast majority of publicly held debt. From FY1947 to FY2017, annual nominal budget deficits of the federal government summed to \$13.026 trillion: over the same period, total debt held by the public increased by \$14.432 trillion.<sup>11</sup> Publicly held debt, in turn, has been the biggest determinant of historical changes in the total stock of federal debt. **Figure 1** shows changes in federal debt levels from FY1947 through FY2017. Though there has been a gradual increase in intragovernmental debt in recent decades, the decline in real debt following World War II and subsequent increase in debt levels beginning in the late 1970s were each caused primarily by similar changes in the stock of publicly held debt over those time periods.

**Figure 1. Federal Debt, FY1947-FY2017**  
(As a % of GDP)



Source: OMB Historical Table 7.1.

<sup>11</sup> Office of Management and Budget, *Historical Tables 1.1 and 7.1*, available at <https://www.whitehouse.gov/omb/budget/Historicals>.

## How Debt Contributes to Deficits

Borrowing outcomes directly affect future budgeting outcomes. Publicly held debt contributes directly to federal deficits through interest payments on debt issuances. Interest payments are made to both debt held by the public and intragovernmental debt. As the government serves as buyer and seller of intragovernmental debt, interest payments on those holdings do not affect the federal budget deficit.<sup>12</sup> However, interest payments made on publicly held debt represent new federal spending, and are recorded in the budget as outlays when payments are made. *Interest represents the cost that the government incurs when it opts to finance spending through borrowing rather than through increased revenues. In budgetary terms, net interest payments represent the net amount of money paid from the government to debt holders in a given time period.*<sup>13</sup>

For investors, the purchase of a debt issuance represents both a loss of liquidity relative to currency holdings (money paid for the debt holding can be used immediately, while the debt issuance may only be resold on the secondary market or held until the date of maturity) and an opportunity cost (the money used for the purchase could have been spent on other items, invested elsewhere, or saved). Debt holders are compensated for those costs by receiving interest payments from Treasury on their issuances.

### Determinants of Net Interest Payments

The amount of net interest payments owed by the federal government depends on the existing stock, or total, of federal debt and the interest rate on outstanding debt instruments. The structure of the interest payments may be fixed or variable, depending on the type of debt holding. In either case, the terms of interest are agreed to in advance of sale. Interest rates on debt vehicles are largely determined by prevailing economic conditions. Situations where the private cost of borrowing (interest rate) is high will raise interest rates on federal debt and thereby increase net interest payments. Increases in the amount of existing debt will also lead to a rise in net interest payments, as it increases the base on which a given interest rate is applied.

From FY1947 to FY2017, net interest payments averaged 1.9% of annual GDP, a figure equivalent to about \$340 billion in 2017 dollars. High interest rates and increasing debt levels caused the net interest burden to peak in the 1980s and 1990s. Recent net interest payments have been lower than their long-term averages; in FY2017, net interest payments were \$263 billion, or 1.4% of annual GDP. Those low payments are the product of historically low interest rates, as real debt levels are at their highest value since the end of World War II. Unless the federal debt is reduced, net interest payments will likely increase if interest rates shift toward their long-term averages. In its most recent forecast, CBO projects that real net interest payments will increase to 2.9% of GDP by FY2027.<sup>14</sup>

One way to measure the effect of debt on future deficits is to examine the relationship between total federal deficits and the *primary deficit*, which measures the balance of revenues and expenditures with net interest payments excluded. **Figure 2** shows total and primary budget

<sup>12</sup> Although intragovernmental debt does not affect net interest payments, shifts in certain types of intragovernmental debt may serve as a signal of future budgetary challenges. A notable example of such signaling may be seen with the increases in intragovernmental debt held by trust funds devoted to Social Security. Intragovernmental debt from those funds began increasing in the 1980s, as the entry of the “Baby Boomer” generation into the workforce increased payments into the Social Security system, and produced surpluses in Social Security trust funds. However, all else equal, the eventual retirement of those same workers has led to payments from Social Security trust funds exceeding revenues, thereby drawing down from excess funds in those accounts.

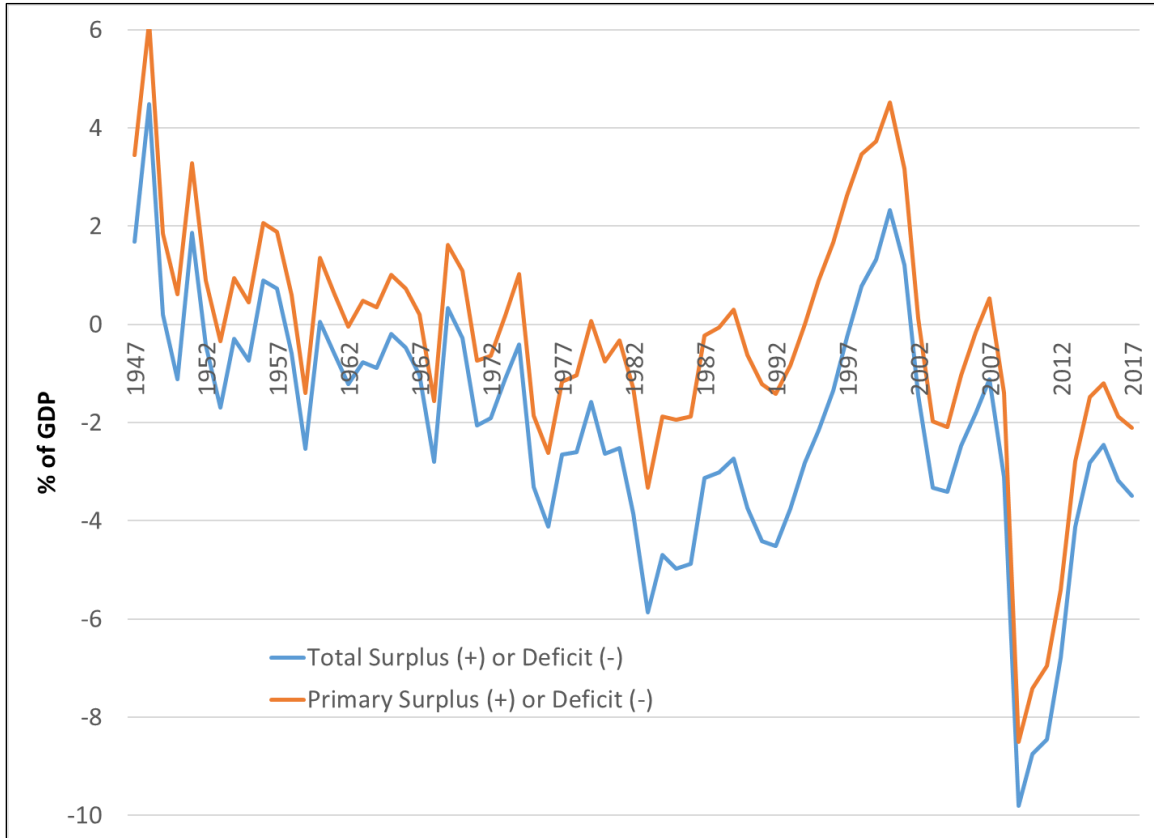
<sup>13</sup> The combined interest paid on debt held by the public and intragovernmental debt is known as gross interest payments.

<sup>14</sup> Congressional Budget Office, *An Update to the Budget and Economic Outlook: 2016 to 2026*, June 2017.



outcomes from FY1947 through FY2017, with the gap between the total and primary outcomes in a given year explained by net interest payments. The primary deficit averaged 0.3% of GDP from FY1947 to FY2017, as compared to the average total budget deficit of 2.1% of GDP average recorded over the same time period. While the federal government recorded a budget surplus 12 times from FY1947 to FY2017, in 20 other years it registered a primary surplus, most recently in 2007.

**Figure 2. Total and Primary Federal Budget Outcomes, FY1947-FY2017**  
(As a % of GDP)



Source: Office of Management and Budget, *Historical Tables 1.2 and 7.1*. CRS calculations.

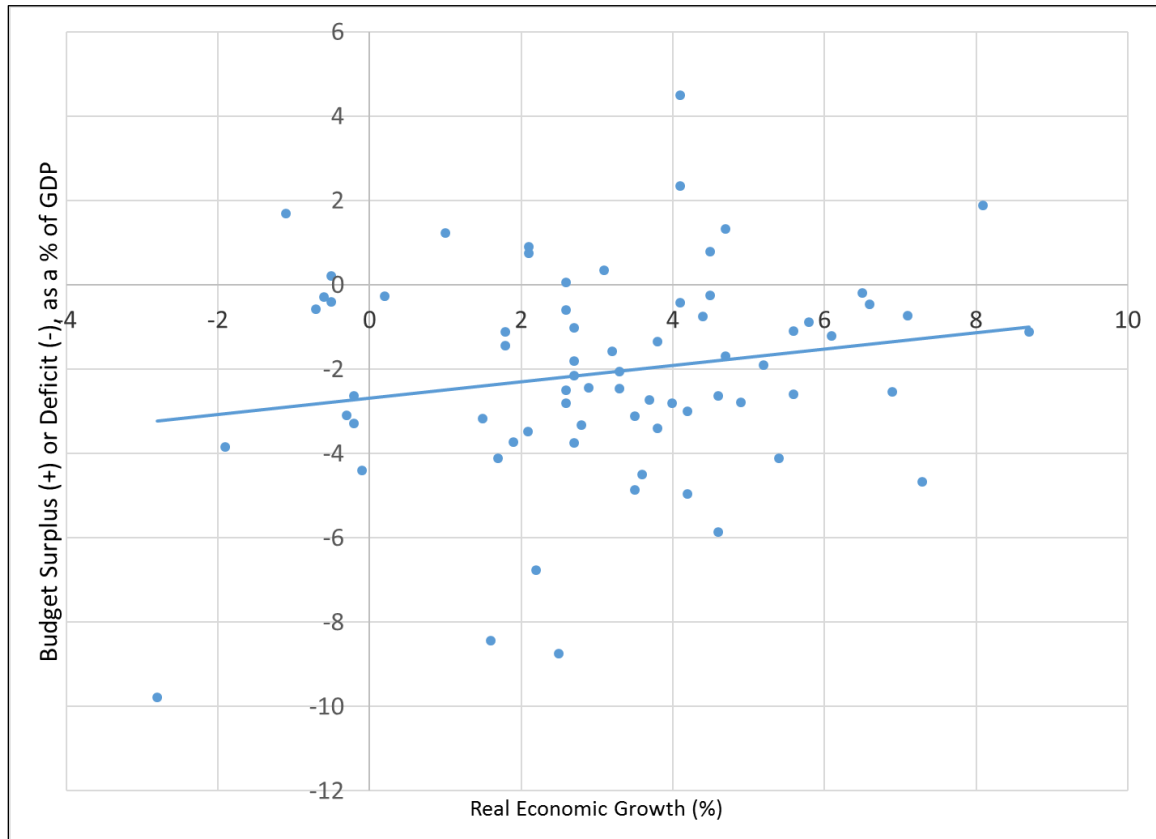
## Deficits, Debt, and the Economy

### How the Economy Contributes to Deficits

The deficit’s cyclical pattern can be attributed in part to “automatic stabilizers,” or the spending programs and tax provisions that cause the budget deficit to move in tandem with the business cycle without any change in law. More robust economic periods have generally produced lower net deficits (or higher net surpluses), due to increases in receipts (from greater tax revenues) and reduced expenditures (from decreased demand for public assistance). As incomes and employment fall, the existing structure of the federal tax system automatically collects less revenue and spending on mandatory income security programs, such as unemployment insurance, automatically rises. The opposite effect occurs during expansions. CBO estimates that the share of the deficit attributable to automatic stabilizers has fallen from 1.9% of GDP in FY2010 to

0.2% of GDP in FY2017. In other words, once cyclical elements are removed, an underlying “structural deficit” of 3.3% of GDP remains in FY2017.

**Figure 3. Economic and Federal Budget Outcomes, FY1947-FY2017**



**Source:** Office of Management and Budget, *Historical Tables 1.2 and 7.1*; Bureau of Economic Analysis, *National Income and Product Accounts*, Table 1.1.3. CRS calculations.

**Notes:** Each dot represents the economic outcome (on the horizontal axis) and federal budget outcome (on the vertical axis) for one fiscal year. The trend line of the entire sample is in blue.

**Figure 3** shows the real economic growth (as a percentage on the horizontal axis) and the federal budget outcome (as a percentage of GDP, on the vertical axis) in each fiscal year from FY1947 through FY2017. The positive correlation between economic outcomes and budget outcomes is picked up by the general direction of the trend line from the lower left part of the graph to the upper right area.

## How the Economy Contributes to Debt

All else equal, higher levels of nominal GDP make a given amount of debt easier to repay by eroding its real value. For example, the highest measurement of debt since 1940 occurred in 1946, when the federal debt level was 118.9% of GDP, or \$271 billion in nominal FY1946 dollars. In contrast, \$271 billion was equivalent to only 1.4% of GDP in FY2017.<sup>15</sup> Increases in nominal

<sup>15</sup> With positive economic growth, it is possible to simultaneously experience a year-over-year increase in nominal debt and decrease in real debt. The federal government experienced this most recently from FY2000 to FY2001, when nominal debt increased by \$141 billion (from \$5.629 trillion to \$5.770 trillion), but real debt decreased by 0.9% of

GDP may be caused by productivity increases, economic inflation—which measures the purchasing power of currency—or a combination of each factor.<sup>16</sup>

Though changes in economic growth rates may have a relatively small effect on real debt levels in the short run, long-run changes in economic productivity can have a significant effect on the trajectory and sustainability of the debt burden. For instance, from FY2008 through FY2017, federal deficits averaged 5.3% of GDP, and real economic growth averaged 1.4% per year over the same period: those factors combined to increase federal publicly held debt from 39% of GDP at the beginning of FY2008 to 77% of GDP at the end of FY2017.<sup>17</sup> The last time 10-year federal deficits exceeded 5.3% of GDP was from FY1943 to FY1952, when deficits averaged 7.3% of GDP. However, primarily because economic growth over that period was more robust (3.6% per year), the change in publicly held debt in that decade was smaller (45% of GDP to 60% of GDP) than in FY2008-FY2017.

## How Deficits and Debt Contribute to the Economy

### Short-Run Effects

The government may choose to generate short-run budget deficits for a few reasons. Deficit financing, or payment for federal government activity at least partly through debt increases, increases the total level of spending in the economy. Most economists believe that the implementation of deficit financing can be used to generate a short-term stimulus effect, either for a particular industry or for the entire economy. In this view, increases in expenditures and tax reductions can be used to generate employment opportunities and consumer spending and reduce the intensity of stagnant economic periods. Deficit financing is a less effective countercyclical strategy when it leads to “crowding out.” Crowding out occurs when government financing merely replaces private sector funding instead of inducing new economic activity, and is more likely to occur in periods of robust economic growth. Deficit reduction when the economy is operating near or at full potential can help prevent the economy from overheating and avoid “crowding out” of private investment, which could have positive implications for intergenerational equity and long-term growth.

Deficit financing may also be used as part of a structurally balanced budget strategy, which alters government tax and spending levels to smooth the effect of business cycles. Smoothing budgetary changes may reduce the economic shocks deficits induce among businesses and households. Governments may also use federal deficits or surpluses to spread the payment burden of long-term projects across generations. This sort of intergenerational redistribution is one justification for the creation of long-run trust funds, such as those devoted to Social Security.

### Long-Run Effects

Although there are some cases where deficit financing may be advisable, the long-run generation of consistent deficits causes publicly held debt accumulation that may inhibit economic growth.

---

GDP (from 55.5% to 54.6%).

<sup>16</sup> Because real GDP measures adjust for the effects of inflation, average nominal GDP growth from FY1941-FY2015 (7.1%) exceeds measures of real GDP growth over the same period. As measured by the Bureau of Economic Analysis’ National Income and Product Accounts (Table 1.1.3), real GDP grew by an annual average of 3.5% from FY1941 to FY2015.

<sup>17</sup> Changes in real debt over time are also influenced by the stock of real debt at the beginning of the period, with larger amounts of real debt leading to smaller net increases in the debt stock from a given combination of deficits and economic growth.

Deficit financing tends to crowd out greater levels of private investment in better economic conditions. Increases in real debt may also generate crowding out that could reduce future economic productivity. In extreme cases, large or rapidly increasing debt levels may also have unintended macroeconomic effects. If potential buyers of U.S. debt issuances lose confidence in the ability of the federal government to repay its debt, ensuing increases in the supply of money through debt financing (known as debt monetization) may lead to rising interest costs or price inflation. Such a scenario could harm economic output and increase the chances of a recession.

The concept of “fiscal space” refers to the amount of room available for additional government borrowing. Persistent deficits face a long-term binding constraint—the willingness of investors to finance them. If deficits are too large, publicly held debt would grow more quickly than the economy. At some point, debt would become so large that investors would no longer be willing to finance deficits and such fiscal space would be exhausted. There is great uncertainty about when investors would stop financing federal borrowing. The amount of fiscal space available is a function of both the current size of the debt and how fast it is increasing relative to GDP, which depends on the size of deficits, the government’s borrowing rate, and how quickly the economy is growing. Because the reaction of investors to future increases in the debt is unknown, it is difficult to estimate when fiscal space will run out—although for the federal government it is likely not imminent, given the presence of relatively low interest rates.

Recent international experiences speak to the complexity of fiscal space. Both Greece and Japan experienced rapid growth in government debt in the past decade. Organization for Economic Co-Operation and Development data on general government debt (including municipal government debt) indicate that Greek debt rose from 115% of GDP in 2006 to 182% of GDP in 2015, while Japanese debt rose from 180% of GDP to 234% of GDP over the same time period. A loss in market confidence in Greek debt led to a severe recession, with GDP contracting by 9 percentage points in 2011 and long-term interest rates reaching 22% in 2012. Japanese borrowing was viewed to be more sustainable despite being higher, with relatively flat GDP levels and long-term interest rates close to zero in recent years. Among 31 OECD countries, the United States had the 6<sup>th</sup>-largest level of general government debt (126% of GDP, including debt from state and local governments) in 2015, the most recent year for which full data are available.

## Deficit and Debt Outlook

The FY2017 real deficit equaled 3.5% of GDP, which was higher than the average federal deficit from FY1947 to FY2017 (2.1% of GDP). Both real deficits and real debt are projected to increase over the course of the 10-year budget window, which runs through FY2027. In its latest economic forecast, the CBO projected that the total burden of U.S. debt held by the public would steadily increase over the course of the budget window, from 76.7% of GDP in FY2017 to 91.2% of GDP in FY2027.<sup>18</sup>

Long-run budget projections also suggest that structural deficits will continue to increase beyond FY2027 under current law. CBO’s most recent *Long-Term Budget Outlook* projects that under current law, in FY2047 deficits will rise to 9.8% of GDP in FY2047 and publicly held debt will reach 150% of GDP. A growing share of resources devoted to net interest payments is one contributor to the long-term increase in deficits, as CBO projects that under current law, spending to service the federal debt grows from 1.4% of GDP in FY2017 to 5.2% of GDP in FY2047.<sup>19</sup>

---

<sup>18</sup> Congressional Budget Office, *An Update to the Budget and Economic Outlook: 2016 to 2026*, June 2017.

<sup>19</sup> Congressional Budget Office, *The 2017 Long-Term Budget Outlook*, March 2017.

GAO's recent long-term fiscal simulations, under an alternative policy scenario, projected that debt held by the public as a share of GDP would exceed the post-World War II historical high in the next 15 to 25 years.<sup>20</sup>

Addressing the potential consequences of those projections will likely involve policy adjustments that reduce the occurrences and intensity of budget deficits, either through tax increases, reductions in spending, or a combination of the two. Under CBO's extended baseline, maintaining the debt-to-GDP ratio at today's level (77%) in FY2047 would require an immediate and permanent cut in noninterest spending, increase in revenues, or some combination of the two in the amount of 1.9% of GDP (or about \$380 billion in FY2018 alone) in each year. Maintaining this debt-to-GDP ratio beyond FY2047 would require additional deficit reduction. If policymakers wanted to lower future debt levels relative to today, the annual spending reductions or revenue increases would have to be larger. For example, in order to bring debt as a percentage of GDP in FY2046 down to its historical average over the past 50 years (40% of GDP), spending reductions or revenue increases or some combination of the two would need to generate net savings of roughly 3.1% of GDP (or \$620 billion in FY2018 alone) in each year.<sup>21</sup>

## Author Contact Information

(name redacted)  
Analyst in Public Finance  
/redacted/@crs.loc.gov, 7-....

---

<sup>20</sup> Government Accountability Office, *The Nation's Fiscal Health: Action is Needed to Address the Federal Government's Fiscal Future*, January 2017.

<sup>21</sup> Congressional Budget Office, *The 2017 Long-Term Budget Outlook*, March 2017.

# EveryCRSReport.com

The Congressional Research Service (CRS) is a federal legislative branch agency, housed inside the Library of Congress, charged with providing the United States Congress non-partisan advice on issues that may come before Congress.

EveryCRSReport.com republishes CRS reports that are available to all Congressional staff. The reports are not classified, and Members of Congress routinely make individual reports available to the public.

Prior to our republication, we redacted names, phone numbers and email addresses of analysts who produced the reports. We also added this page to the report. We have not intentionally made any other changes to any report published on EveryCRSReport.com.

CRS reports, as a work of the United States government, are not subject to copyright protection in the United States. Any CRS report may be reproduced and distributed in its entirety without permission from CRS. However, as a CRS report may include copyrighted images or material from a third party, you may need to obtain permission of the copyright holder if you wish to copy or otherwise use copyrighted material.

Information in a CRS report should not be relied upon for purposes other than public understanding of information that has been provided by CRS to members of Congress in connection with CRS' institutional role.

EveryCRSReport.com is not a government website and is not affiliated with CRS. We do not claim copyright on any CRS report we have republished.