



**Congressional
Research Service**

Informing the legislative debate since 1914

Lebanon

name redacted

Analyst in Middle Eastern Affairs

November 9, 2017

Congressional Research Service

7-....

www.crs.gov

R44759

Summary

Since having its boundaries drawn by France after the First World War, Lebanon has struggled to define its national identity. Unlike other countries in the region, its population included Christian, Sunni Muslim, and Shia Muslim communities of roughly comparable size, and with competing visions for the country. Seeking to avoid sectarian conflict, Lebanese leaders created a confessional system that allocated power among the country's religious sects according to their percentage of the population. The system was based on Lebanon's last official census, which was conducted in 1932.

As Lebanon's demographics shifted over the years, Muslim communities pushed for the political status quo, favoring Maronite Christians, to be revisited, while the latter worked to maintain their privileges. This tension at times manifested itself in violence, such as during the country's 15-year civil war, but also in ongoing political disputes such as disagreements over revisions to Lebanon's electoral law. To date, domestic political conflicts continue to be shaped in part by the influence of external actors, including Syria and Iran.

The United States has sought to bolster forces that could serve as a counterweight to Syrian and Iranian influence in Lebanon. The United States has provided more than \$1 billion in military assistance to Lebanon with the aim of creating a national force strong enough to counter nonstate actors and secure the country's borders. Hezbollah's armed militia is frequently described as more effective than the Lebanese Armed Forces (LAF). U.S. policy in Lebanon has been undermined by Syria and Iran, both of which exercise significant influence in the country, including through support for Hezbollah. The question of how best to marginalize Hezbollah and other anti-U.S. Lebanese actors without provoking civil conflict among divided Lebanese sectarian political forces has remained a key challenge for U.S. policymakers.

In addition, Lebanon currently faces a large-scale refugee crisis driven by the ongoing war in neighboring Syria. There are over 1 million Syrian refugees registered with the U.N. High Commissioner for Refugees (UNHCR) in Lebanon, in addition to a significant existing community of Palestinian refugees. This has given Lebanon (a country of roughly 4.3 million citizens in 2010) the highest per capita refugee population in the world. Lebanon's infrastructure has been unable to absorb the refugee population, which some government officials describe as a threat to the country's security. Since 2015 the government has taken steps to close the border to those fleeing Syria, and has implemented measures that have made it more difficult for existing refugees to remain in Lebanon legally.

At the same time, Hezbollah has played an active role in the ongoing fighting in Syria. The experience gained by Hezbollah in the Syria conflict has raised questions about how the eventual return of these fighters to Lebanon could impact the country's domestic stability or affect the prospects for renewed conflict with Israel.

This report provides an overview of Lebanon and current issues of U.S. interest. It provides background information, analyzes recent developments and key policy debates, and tracks legislation, U.S. assistance, and recent congressional action.

Contents

Background	1
Issues for Congress.....	4
Politics.....	5
2016 Presidential Election	5
2017 Resignation of Prime Minister Saad Hariri.....	6
Delayed Legislative Elections.....	7
Security Challenges.....	8
2017 Border Operations	10
Hezbollah Offensive Near Arsal	11
LAF Border Operation Against the Islamic State	12
Hezbollah.....	13
Clashes with Israel	13
2006 Hezbollah-Israel War	14
United Nations Force in Lebanon	15
Domestic Politics	17
Intervention in Syria.....	18
Syrian and Palestinian Refugees and Lebanese Policy	19
Return of Syrian Refugees	22
Economy and Fiscal Issues.....	22
Eastern Mediterranean Energy Resources and Disputed Boundaries	23
U.S. Policy.....	24
Economic Aid.....	25
Military Aid.....	25
Recent Legislation.....	29
Hizballah International Financing Prevention Act of 2015	29
Hizballah International Financing Prevention Amendments Act of 2017.....	31
Outlook.....	31

Figures

Figure 1. Lebanon at a Glance.....	1
Figure 2. Lebanon’s Political Coalitions	8
Figure 3. Border Operations Target Militants in Lebanon’s Northeast	12
Figure 4. United Nations Force in Lebanon (UNIFIL) Deployment and Lebanon-Syria- Israel Triborder Area	17
Figure 5. Registered Syrian Refugees in Lebanon	20
Figure 6. Eastern Mediterranean Maritime Territory Disputes and Energy Resources	24

Tables

Table 1. Select U.S. Assistance Funding for Lebanon-Related Programs.....	28
---	----

Contacts

Author Contact Information 32

Background

Prior to World War I, the territories comprising modern-day Lebanon were governed as separate administrative regions of the Ottoman Empire. After the war ended and the Ottoman Empire collapsed, the 1916 Sykes-Picot agreement divided the empire's Arab provinces into British and French zones of influence. The area constituting modern day Lebanon was granted to France, and in 1920, French authorities announced the creation of Greater Lebanon. To form this new entity, French authorities combined the Maronite Christian enclave of Mount Lebanon—semiautonomous under Ottoman rule—with the coastal cities of Beirut, Tripoli, Sidon, and Tyre and their surrounding districts. These latter districts were (with the exception of Beirut) primarily Muslim and had been administered by the Ottomans as part of the *vilayet* (province) of Syria.

Figure 1. Lebanon at a Glance



Population: 6,237,738 (July 2016 est., includes Syrian refugees)

Religion: Muslim 54% (27% Sunni, 27% Shia), Christian 40.5% (includes 21% Maronite Catholic, 8% Greek Orthodox, 5% Greek Catholic, 6.5% other Christian), Druze 5.6%, very small numbers of Jews, Baha'is, Buddhists, Hindus, and Mormons. Note: 18 religious sects recognized

Land: (Area) 10,400 sq km, 0.7 the size of Connecticut; (Borders) Israel, 81 km; Syria, 403 km

GDP: (PPP, growth rate, per capita 2015 est.) \$83 billion, 1%, \$18,200

Budget: (spending, deficit, 2015 est.) \$13.53 billion, -7.7% of GDP

Public Debt: (2015 est.) 147.6% of GDP

Source: Created by CRS using ESRI, Google Maps, and Good Shepherd Engineering and Computing. CIA World Factbook data, Nov. 2016.

These administrative divisions created the boundaries of the modern Lebanese state; historians note that “Lebanon, in the frontiers defined on 1 September 1920, had never existed before in history.”¹ The new Muslim residents of Greater Lebanon—many with long-established economic links to the Syrian interior—opposed the move, and some called for integration with Syria as part of a broader postwar Arab nationalist movement. Meanwhile, many Maronite Christians—some of whom also self-identified as ethnically distinct from their Arab neighbors—sought a Christian state under French protection. The resulting debate over Lebanese identity would shape the new country’s politics for decades to come.

Independence. In 1943, Lebanon gained independence from France. Lebanese leaders agreed to an informal National Pact, in which each of the country’s officially recognized religious groups were to be represented in government in direct relation to their share of the population, based on the 1932 census. The presidency was to be reserved for a Maronite Christian (the largest single denomination at that time), the prime minister post for a Sunni Muslim, and the speaker of parliament for a Shia. Lebanon has not held a census since 1932, amid fears (largely among Christians) that any demographic changes revealed by a new census—such as a Christian population that was no longer the majority—would upset the status quo.²

Civil War. In the decades that followed, Lebanon’s sectarian balance remained a point of friction between communities. Christian dominance in Lebanon was challenged by a number of events, including the influx of (primarily Sunni Muslim) Palestinian refugees as a result of the Arab-Israeli conflict, and the mobilization of Lebanon’s Shia Muslim community in the south—which had been politically and economically marginalized. These and other factors would lead the country into a civil war that lasted from 1975 to 1990 and killed an estimated 150,000 people. While the war pitted sectarian communities against one another, there was also significant fighting within communities.

Foreign Intervention. The civil war drew in a number of external actors, including Syria, Israel, Iran, and the United States. Syrian military forces intervened in the conflict in 1976, and remained in Lebanon for another 29 years. Israel sent military forces into Lebanon in 1978 and 1982, and conducted several subsequent airstrikes in the country. In 1978, the U.N. Security Council established the United Nations Interim Force in Lebanon (UNIFIL) to supervise the withdrawal of Israeli forces from southern Lebanon, which was not complete until 2000.³ In the early 1980s, Israel’s military presence in the heavily Shia area of southern Lebanon began to be contested by an emerging militant group that would become Hezbollah, backed by Iran. The United States deployed forces to Lebanon in 1982 as part of a multinational peacekeeping force, but withdrew its forces after the 1983 marine barracks bombing in Beirut, which killed 241 U.S. personnel.

Taif Accords. In 1989, the parties signed the Taif Accords, beginning a process that would bring the war to a close the following year. The agreement adjusted and formalized Lebanon’s confessional system, further entrenching what some described as an unstable power dynamic between different sectarian groups at the national level. The political rifts created by this system allowed Syria to present itself as the arbiter between rivals, and pursue its own interests inside

¹ Fawwaz Traboulsi, *A History of Modern Lebanon*, Pluto Press, London, 2007, p. 75.

² A demographic study conducted in 2011 by Statistics Lebanon, a Beirut-based research firm, reported that Lebanon’s population was 27% Sunni, 27% Shia, and 21% Maronite Christian, with the remainder composed of smaller Christian denominations, and Druze. See, “Lebanon,” State Department International Religious Freedom Report for 2011. See also, “Lebanon,” CIA World Factbook, November 2016. Other studies estimate that Lebanese Shia slightly outnumber Sunnis See: “Lebanon: Census and sensibility,” *The Economist*, November 5, 2016.

³ UNIFIL forces remain deployed in southern Lebanon, comprising 10,500 peacekeepers drawn from 40 countries.

Lebanon in the wake of the war. The participation of Syrian troops in Operation Desert Storm to expel Iraqi forces from Kuwait reportedly facilitated what some viewed as the tacit acceptance by the United States of Syria's continuing role in Lebanon. The Taif Accords also called for all Lebanese militias to be dismantled, and most were reincorporated into the Lebanese Armed Forces. However, Hezbollah refused to disarm—claiming that its militia forces were legitimately engaged in resistance to the Israeli military presence in southern Lebanon.

Hariri Assassination. In February 2005, former Lebanese Prime Minister Rafik Hariri—a prominent anti-Syria Sunni politician—was assassinated in a car bombing in downtown Beirut. The attack galvanized Lebanese society against the Syrian military presence in the country and triggered a series of street protests known as the “Cedar Revolution.” Under pressure, Syria withdrew its forces from Lebanon in the subsequent months, although Damascus continued to influence domestic Lebanese politics. While the full details of the attack are unknown, the Special Tribunal for Lebanon (STL) has indicted five members of Hezbollah and is conducting trials in absentia.⁴ The Hariri assassination reshaped Lebanese politics into the two major blocks known today: March 8 and March 14, which represented pro-Syria and anti-Syria segments of the political spectrum, respectively (see **Figure 2**).

2006 Hezbollah-Israel War. In July 2006, Hezbollah captured two Israeli soldiers along the border, sparking a 34-day war. The Israeli air campaign and ground operation aimed at degrading Hezbollah resulted in widespread damage to Lebanon's civilian infrastructure, killing roughly 1,190 Lebanese, and displacing a quarter of Lebanon's population.⁵ In turn, Hezbollah launched thousands of rockets into Israel, killing 163 Israelis.⁶ U.N. Security Council Resolution 1701 brokered a cease-fire between the two sides.

2008 Doha Agreement. In late 2006, a move by the Lebanese government to endorse the STL led Hezbollah and its political ally Amal to withdraw from the government, triggering an 18-month political crisis. In May 2008, a cabinet decision to shut down Hezbollah's private telecommunications network—which the group reportedly viewed as critical to its ability to fight Israel—led Hezbollah fighters to seize control of parts of Beirut. The resulting sectarian violence raised questions regarding Lebanon's risk for renewed civil war, as well as concerns about the willingness of Hezbollah to deploy its militia force in response to a decision by Lebanon's civilian government. Qatar helped broker a political settlement between rival Lebanese factions, which was signed on May 21, 2008, and became known as the Doha Agreement.

War in Syria. In 2011, unrest broke out in neighboring Syria. Hezbollah moved to support the Assad regime, eventually mobilizing to fight inside Syria. Meanwhile, prominent Lebanese Sunni leaders sided with the Sunni rebels. As rebel forces fighting along the Lebanese border were defeated by the Syrian military—with Hezbollah assistance—rebels fell back, some into Lebanon. Syrian refugees also began to flood into the country. Beginning in 2013, a wave of retaliatory attacks targeting Shia communities and Hezbollah strongholds inside Lebanon threatened to destabilize the domestic political balance as each side accused the other of backing terrorism. The Lebanese Armed Forces (LAF) and Hezbollah have both worked to contain border attacks by Syria-based groups such as the Islamic State and the Nusra Front.

⁴ The United Nations Security Council created the STL as an independent judicial organization in Resolution 1757 of May 2007. The STL has worked from its headquarters in Leidschendam, the Netherlands, since March 2009, and consists of three chambers, prosecutors and defense offices, and an administrative Registrar. For additional details, see Special Tribunal for Lebanon Seventh Annual Report (2015-2016). See also, “The Hezbollah Connection,” *New York Times Magazine*, February 15, 2015.

⁵ Human Rights Watch, *Why They Died: Civilian Casualties in Lebanon during the 2006 War*, September 5, 2007.

⁶ Human Rights Watch, *Civilians under Assault: Hezbollah's Rocket Attacks on Israel in the 2006 War*, August 2007.

Issues for Congress

U.S. policy in Lebanon has sought to limit threats posed by Hezbollah both domestically and to Israel, bolster Lebanon's ability to protect its borders, and build state capacity to deal with the refugee influx. At the same time, Iranian influence in Lebanon via its ties to Hezbollah, the potential for renewed armed conflict between Hezbollah and Israel, and Lebanon's internal political dynamics complicate the provision of U.S. assistance. Lebanon continues to be an arena for conflict between regional states, as local actors aligned with Syria and Iran vie for power against those that seek support from Saudi Arabia and the United States.

As Congress reviews aid to Lebanon, Members continue to debate the best ways to meet U.S. policy objectives:

- **Weakening Hezbollah.** The United States has sought to weaken Hezbollah over time, yet without provoking a direct confrontation with the group that could undermine the country's stability. The November 2017 resignation of Lebanon's prime minister undermined a coalition government that was widely viewed as favorable to Hezbollah. However, it also represented the loss of the United States' main civilian partner inside the Lebanese government and raised the prospect of potential instability.
- **Building state capacity.** Obama Administration officials argued that U.S. assistance to the Lebanese Armed Forces is essential to building the capability of the LAF to serve as the sole legitimate guarantor of security in Lebanon, and to counter the role of Hezbollah and Iran inside Lebanon.⁷ However, some Members argued that Hezbollah has increased cooperation with the LAF, and questioned the Obama Administration's request for continuing Foreign Military Financing (FMF) assistance to Lebanon.⁸ Adjacent Hezbollah and LAF operations along the Syrian border in mid-2017 against Islamic State and Al Qaeda-affiliated militants raised additional questions about deconfliction and coordination between the military and Hezbollah fighters.
- **Defending Lebanon's borders.** Beginning in late 2012, Lebanon faced a wave of attacks from Syria-based groups, some of which sought to gain a foothold in Lebanon. U.S. policymakers have sought to ensure that the Lebanese Armed Forces have the tools they need to defend Lebanon's borders against encroachment by the Islamic State and other armed nonstate groups.
- **Assisting Syrian refugees.** While seeking to protect Lebanon's borders from infiltration by the Islamic State and other terrorist groups, the United States also has called for Lebanon to keep its border open to Syrian refugees fleeing violence. The United States has provided more than \$1.5 billion in humanitarian aid to Lebanon since FY2012,⁹ much of it designed to lessen the impact of the refugee surge on host communities.

⁷ State Department Daily Press Briefing by Spokesperson John Kirby, March 8, 2016.

⁸ Transcript, House Foreign Affairs Subcommittee on Middle East and North Africa hearing on U.S. policy towards Lebanon, April 28, 2016.

⁹ "U.S. Humanitarian Assistance in Response to the Syrian Refugee Crisis in Lebanon," Fact Sheet, Department of State, July 25, 2017.

- **Strengthening government institutions.** U.S. economic aid to Lebanon aims to strengthen Lebanese institutions and their capacity to provide essential public services. Slow economic growth and high levels of public debt have limited government spending on basic public services, and this gap has been filled in part by sectarian patronage networks, including some affiliated with Hezbollah. U.S. programs to improve education, increase service provision, and foster economic growth are intended to make communities less vulnerable to recruitment by extremist groups.

Politics

Lebanon is a parliamentary republic. The confessional political system established by the 1943 National Pact and formalized by the 1989 Taif Accords divides power among Lebanon's three largest religious communities (Christian, Sunni, Shia) in a manner designed to prevent any one group from dominating the others. Major decisions can only be reached through consensus, setting the stage for prolonged political deadlock.

2016 Presidential Election

On October 31, 2016, Lebanon's parliament elected Christian leader and former LAF commander Michel Aoun [pronounced AWN] as president, filling a post that had stood vacant since the term of former President Michel Sleiman expired in May 2014. More than 40 attempts by the parliament to convene an electoral session had previously failed, largely due to boycotts by various parties that prevented the body from attaining the necessary quorum for the vote.¹⁰ Those most frequently boycotting sessions were MPs allied with the Free Patriotic Movement (FPM) and Hezbollah.¹¹

In addition to creating an electoral stalemate, boycotts had also prevented the National Assembly from attaining the necessary quorum to convene regular legislative sessions, effectively paralyzing many functions of the central government. In 2015, the country saw mass protests over the government's failure to collect garbage. Over the past two years, some parties have used legislative boycotts as a way to block the consideration of controversial issues, such as the proposal for a new electoral law.

The election of a president in October was made possible in part by a decision by Future Movement leader Saad Hariri—head of the largest single component of the March 14 coalition—to shift his support from presidential candidate Suleiman Franjeh to Michel Aoun, giving Aoun the votes necessary to secure his election. In return, Aoun was expected to appoint Hariri as prime minister. In December 2016, a new 30-member cabinet was announced, headed by Hariri. This began Hariri's second term as prime minister (he previously held the post from 2009 to 2011).

Aoun is a former military officer and a long-standing fixture of the Lebanese political scene. Founder of the Maronite Christian Free Patriotic Movement, he has been allied with Hezbollah since 2005. At the same time, he represents a Christian community which views Hezbollah's interference in Syria as endangering Lebanese stability.

¹⁰ "Lebanon records 44th failed attempt to elect president," *Daily Star*, September 7, 2016.

¹¹ Alex Rowell, "Revealed: The MPs who aren't voting for a president," *NOW*, September 28, 2016.

2017 Resignation of Prime Minister Saad Hariri

On November 4, Prime Minister Hariri announced his resignation as prime minister during a visit to Saudi Arabia. In a recorded address, Hariri condemned Iran and Hezbollah, stating the following:

I point frankly and without evasion to Iran, which sows sedition, destruction, and havoc everywhere it goes ... Unfortunately, it found among our sons someone to cooperate with it, to openly announce their allegiance to it, and to attempt to abduct Lebanon from its Arab and international environment, with all the values and ideals it represents; by that I mean Hizballah ... Unfortunately, over the past decades, Hizballah was able to impose a de facto reality in Lebanon by the force of its arms.¹²

Hariri also suggested that he had been targeted for assassination, although Lebanon's Internal Security Forces denied knowledge of any such attempt.¹³ Hariri's father, former Prime Minister Rafiq Hariri, was assassinated in 2005. Five members of Hezbollah were indicted for the assassination and are being tried in absentia by the Special Tribunal for Lebanon, based in the Netherlands.

Reactions to the surprise announcement highlighted a mix of external and domestic factors. Many observers described Hariri's resignation as likely driven by pressure from Riyadh, which has sought to isolate Iran and Hezbollah in the region, particularly in light of Iran's growing influence in neighboring Syria.¹⁴ Similarly, Hezbollah leader Hasan Nasrallah described the move as a Saudi decision forced upon Hariri. Nasrallah appealed for calm, stating, "Hezbollah is keen on stability in Lebanon."¹⁵ Other observers argued that the resignation was crafted to portray Hariri's independence from Hezbollah in the run-up to legislative elections, while weakening any Sunni rival that replaced him as prime minister. It is unknown whether legislative elections will occur in the spring of 2018 as previously anticipated.¹⁶

Hariri's resignation dissolves the Lebanese government, which was formed in December 2016. However, Lebanese President Michel Aoun stated that he would not begin the process of forming a new government until Hariri returned to Lebanon.¹⁷ Hariri previously left Lebanon in 2011 (during his first term as prime minister) after Hezbollah and its political allies withdrew their members from the Cabinet, collapsing the government. He spent the next five years in France and Saudi Arabia, visiting Lebanon only twice.¹⁸

Asked to comment on the Hariri resignation, a State Department spokesperson stated, "our relationship with the government will not change ... Lebanon overall is a strong partner of the United States. They have strong national state institutions in the war on terror. The United States strongly supports the legitimate institutions in the Lebanese state."¹⁹ She added that she was not aware of any changes in assistance to the LAF.

¹² "Lebanon: Prime Minister Announces Resignation, Says Iran, Hizballah 'Meddling' in Arabic Nations," Open Source Enterprise, IMR2017110480998914, November 4, 2017.

¹³ "Western intelligence warned Hariri of death plot: Asharq al-Awsat," *Reuters*, November 5, 2017.

¹⁴ "Saad Hariri Quits as Lebanon Prime Minister, Blaming Iran," *New York Times*, November 4, 2017.

¹⁵ "Uncertainty takes hold after Hariri resignation," *Daily Star*, November 6, 2017.

¹⁶ "The Republic of Resignations," *Moulahazat*, <https://moulahazat.com>, November 4, 2017.

¹⁷ "The obstacle-strewn road to the next Cabinet formation," *Daily Star*, November 6, 2017.

¹⁸ "Why is Hariri back in Lebanon?," *Al Monitor*, March 18, 2016.

¹⁹ State Department Press Briefing, November 7, 2017.

Delayed Legislative Elections

In June 2017, Lebanese political parties reached agreement on a new electoral law that would pave the way for legislative elections, currently four years overdue. Although Lebanese law does not require the enactment of a new electoral law as a prerequisite to legislative elections, various parties had argued that the existing law (first enacted in 1960 and reinstated in 2008 by the Doha Agreement) disadvantaged their communities. Despite discontent with the 1960 law, parties for years were unable to reach consensus on how the law should be reformed.

Following the expiration of its term in 2013, the Lebanese parliament extended its term twice (by 17 months, and later by 31 months), in moves described by some parties as unconstitutional. When this last extension expired in May 2017, President Aoun signed a decree establishing an extraordinary parliamentary session from June 7 to June 20, in order to allow more time to reach consensus on an electoral law.²⁰

The cabinet endorsed the new law on June 14 and parliament ratified the law on June 16. The law is based on proportional representation, a departure from the previous winner-take-all system. It divides Lebanon into 15 electoral districts, a reduction from the 26 electoral districts established by the 1960 law. The law also allows voters to cast a “preferential vote” within their chosen electoral list, which will be used to determine the order in which eligible candidates are ultimately seated—a system that some argue is designed to benefit traditional party heavyweights. Finally, all ballots are to be preprinted by the Interior Ministry, with the goal of reducing voter fraud and coercion.²¹

While some observers have hailed the law’s passage as long overdue, others have criticized the law as reinforcing sectarian-based divisions.²² Some argue that the new electoral law is designed to produce homogenous sectarian blocs, in contrast to the cross-sectarian March 8 and March 14 coalitions. According to one analysis, “with the [new electoral law], a 12 year era of having Muslim and Christian parties compete together against other Muslim and Christian parties officially ends.”²³ Some observers have speculated that rival Christian parties currently dispersed between March 8 and March 14 could seek to run as a joint list in next year’s legislative election.²⁴

Also in June, the Cabinet approved an 11-month technical extension of Parliament’s term, preventing a legislative vacuum until the new legislative election can be held. The election is tentatively scheduled for the spring of 2018. It is unclear whether or how Hariri’s resignation may affect the timing of elections.

²⁰ “Aoun authorizes extraordinary session to ratify new election law,” *An Nahar*, June 1, 2017.

²¹ “Lebanon’s draft new election law explained,” *An Nahar*, June 3, 2017.

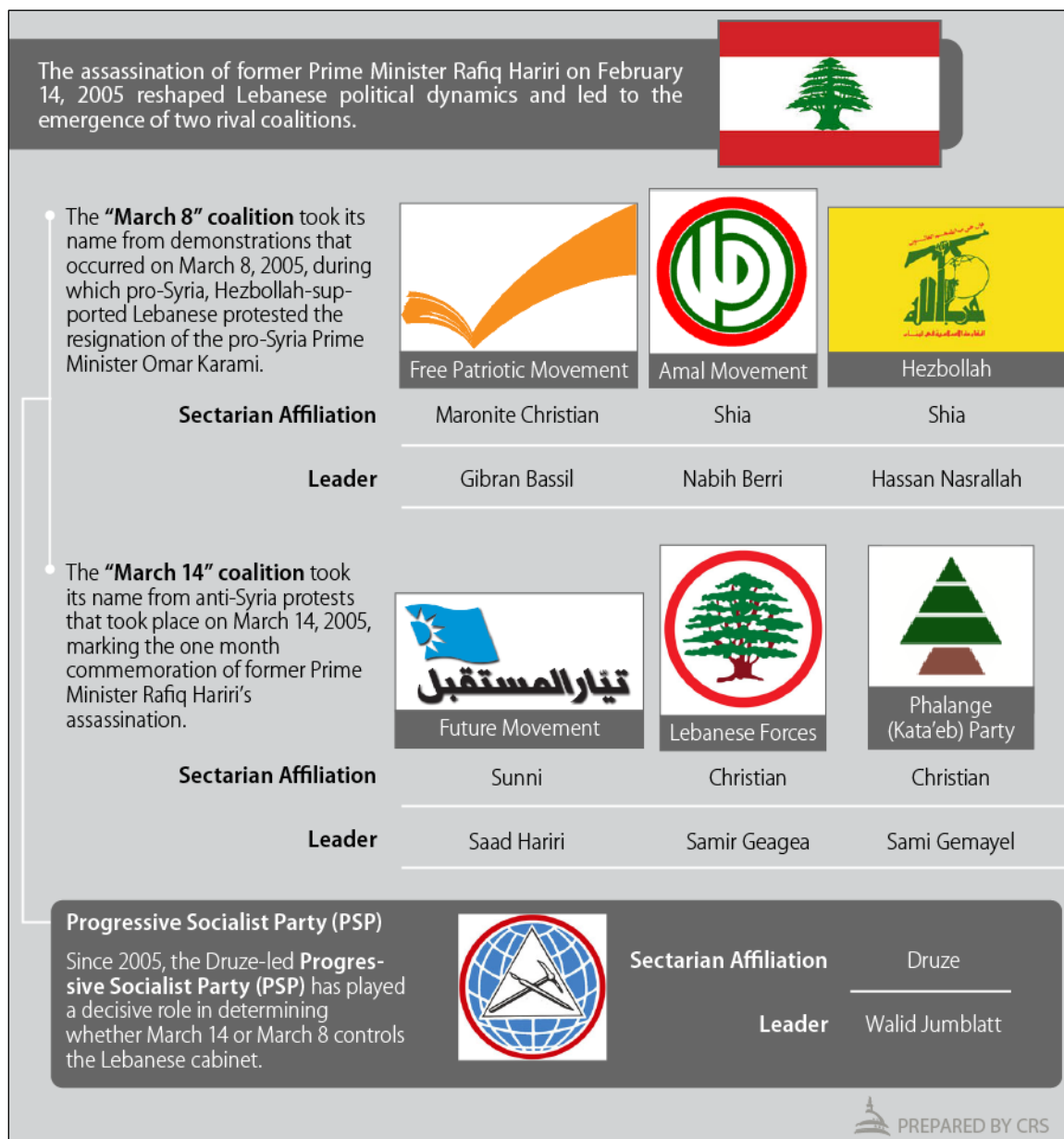
²² See for example, “The Adwan Electoral Law: From Bad to Worse?” <http://www.moulahazat.com>, June 18, 2017.

²³ *Ibid.*

²⁴ “Commentary Views Possible Lebanese Forces-Marada Movement Alliance in Upcoming Lebanese Elections,” Open Source Enterprise, IMR2017071761910659, July 17, 2017.

Figure 2. Lebanon's Political Coalitions

Reflects those parties with the largest number of seats in Parliament



Security Challenges

Lebanon faces numerous security challenges from a combination of internal and external sources. Many of the problems stem from the conflict in neighboring Syria, while others are rooted in long-standing social divisions and the marginalization of some sectors of Lebanese society. The Syria conflict appears to have exacerbated some of the societal cleavages.

According to the State Department's 2016 Country Reports on Terrorism (released in July 2017), Lebanon remains a safe haven for certain terrorist groups:

The Lebanese government did not take significant action to disarm Hizballah or eliminate its safe havens on Lebanese territory, nor did it seek to limit Hizballah's travel to and from Syria to fight in support of the Assad regime or to and from Iraq. The Lebanese government did not have complete control of all regions of the country, or fully control its borders with Syria and Israel. Hizballah controlled access to parts of the country and had influence over some elements within Lebanon's security services, which allowed it to operate with relative impunity.²⁵

The report also noted that ungoverned areas along Lebanon's border with Syria served as safe havens for extremists groups such as the Islamic State and the Al Qaeda-linked Nusra Front (now known as *Ha'ia Tahrir al Sham*, or HTS).

Hezbollah's involvement in Syria has precipitated numerous suicide bombings against Shia areas and Hezbollah strongholds in Lebanon. In July 2013, Nusra Front leader Abu Muhammad Al Jawlani warned that Hezbollah's actions in Syria "will not go unpunished."²⁶ In December 2013, a group calling itself the Nusra Front in Lebanon released its first statement. The group has since claimed responsibility for a number of suicide attacks in Lebanon, which it describes as retaliation for Hezbollah's involvement in Syria.²⁷

The Islamic State has also conducted operations inside Lebanon targeting Shia Muslims and Hezbollah. In November 2015, the Islamic State claimed responsibility for twin suicide bombings in the Beirut suburb of Burj al Barajneh—a majority Shia area. The attack killed at least 43 and wounded more than 200.²⁸ As a result of the targeting of Shia areas, Hezbollah has worked in parallel to the Lebanese Armed Forces to counter the Nusra Front and the Islamic State in Lebanon. In 2016, U.S. defense officials described the relationship between Hezbollah and the LAF as one of "de-confliction."²⁹

Islamic State infiltration into Lebanon has highlighted challenges facing the LAF. In 2013, fighting in the Qalamoun mountain region between Syria and Lebanon transformed the Lebanese border town of Arsal into a rear base for Syrian armed groups.³⁰ In August 2014, clashes broke out between the LAF and Islamic State/Nusra Front militants in Arsal. Nineteen LAF personnel and 40 to 45 Lebanese and Syrians were killed, and 29 LAF and Internal Security Forces were taken hostage.³¹ It was generally believed that nine of the hostages were still being held by the Islamic State, until the location of their remains was disclosed as part of an August 2017 cease-fire arrangement with the group. U.S. officials described the August 2014 clashes between the Islamic State and the LAF in Arsal as a watershed moment for U.S. policy toward Lebanon, accelerating the provision of equipment and training to the LAF.³² The situation in Arsal is compounded by the refugee crisis—the border town hosts more than 40,000 refugees, exceeding the Lebanese host population by more than 15%.³³

²⁵ State Department, *Country Reports on Terrorism 2016*, Chapter 5: Terrorist Safe Havens.

²⁶ OSC Report TRN2013072225034533, "Syria: ... Audio by Al-Nusrah Front Leader Al-Jawlani," July 23, 2013.

²⁷ "Jabhat al-Nusra claims deadly Lebanon bombing," *Al Jazeera*, February 1, 2014.

²⁸ "ISIS claims responsibility for blasts that killed dozens in Beirut," *New York Times*, November 12, 2015.

²⁹ Andrew Exum, Deputy Assistant Defense Secretary for Middle East Policy, at a hearing entitled "U.S. Policy Towards Lebanon," before the House Foreign Affairs Subcommittee on Middle East and North Africa, April 28, 2016.

³⁰ "Arsal in the Crosshairs: The Predicament of a Small Lebanese Border Town," International Crisis Group, February 23, 2016.

³¹ "Lebanon," State Department Annual Report on Human Rights, 2015.

³² CRS conversation with State Department official, October 2016.

³³ "Humanitarian Bulletin, Lebanon," Issue 25, 1-30 November 2016, United Nations Office for the Coordination of (continued...)

Some existing extremist groups in Lebanon who previously targeted Israel have refocused on Hezbollah and Shia communities since the onset of the conflict. The Al Qaeda-linked Abdallah Azzam Brigades (AAB), formed in 2009, initially targeted Israel with rocket attacks. However, the group began targeting Hezbollah in 2013 and is believed to be responsible for a series of bombings in Hezbollah-controlled areas of Beirut, including a November 2013 attack against the Iranian Embassy that killed 23 and wounded at least 150.³⁴

In addition to the AAB, there are numerous Sunni extremist groups based in Lebanon that predate the Syria conflict. These include Hamas, the Popular Front for the Liberation of Palestine (PFLP), Palestinian Islamic Jihad, Fatah al Islam, and Jund al Sham. These groups operate primarily out of Lebanon's 12 Palestinian refugee camps. Due to an agreement between the Lebanese government and the late Palestine Liberation Organization (PLO) chairman Yasser Arafat, Lebanese forces generally do not enter Palestinian camps in Lebanon, instead maintaining checkpoints outside them. These camps operate as self-governed entities, and maintain their own security and militia forces outside of government control.³⁵

Some Lebanese have described the country's growing Syrian refugee population as a risk to Lebanon's security. In June 2016, eight suicide bombers attacked the Christian town of Al Qaa near the Syrian border, killing five and wounding dozens. The attack heightened antirefugee sentiment, as the attackers were initially suspected to be Syrians living in informal refugee settlements inside the town. Lebanese authorities arrested hundreds of Syrians following the attack, although Lebanon's interior minister later stated that seven out of the eight bombers had traveled to Lebanon from the Islamic State's self-declared capital in Raqqa, Syria, and were not residing in Lebanon.³⁶

Some Lebanese politicians continue to call for the return of Syrians to their home country.³⁷ Lebanese President Aoun has expressed support for the establishment of safe zones in coordination with the Syrian government, to facilitate the return of Syrian refugees.³⁸ (See "Syrian and Palestinian Refugees and Lebanese Policy.")

2017 Border Operations

Since 2014, the LAF has increased operations along its northeast border in an effort to dislodge militant groups. These groups include Islamic State militants as well as fighters from an Al Qaeda-linked group known as *Ha'ia Tahrir al Sham* (HTS). Both the Islamic State and HTS have conducted attacks inside Lebanon, prompting heightened efforts by the LAF to secure the border area. Hezbollah has also worked to limit the infiltration of IS and HTS fighters into Lebanon, viewing these groups as a significant threat to Lebanon's Shia community.

On June 30, 2017, five suicide bombers struck two refugee settlements in Aarsal, killing a child and wounding three LAF soldiers. The attacks came during an LAF raid against IS militants thought to be hiding in the area. In the wake of the attacks, the LAF detained some 350 people,

(...continued)

Humanitarian Affairs (OCHA).

³⁴ "Abdallah Azzam Brigades," State Department Country Reports on Terrorism 2015, Chapter 6.

³⁵ "Lebanon," State Department Annual Country Reports on Human Rights, 2015.

³⁶ "Lebanon's tough options as backlash against Syrian refugees grows," *Christian Science Monitor*, July 1, 2016.

³⁷ "Incitement, tensions rise over Syrian refugees in Lebanon," *Al Monitor*, September 28, 2016.

³⁸ "Lebanon backs returning Syrian refugees to 'safe zones'," *Associated Press*, February 3, 2017.

including several alleged IS officials.³⁹ Four Syrian detainees died in LAF custody, drawing criticism from Syrian opposition groups and human rights organizations. A Lebanese military prosecutor has ordered an investigation into the deaths. Following the attack, Hezbollah released a statement supporting LAF operations around Aarsal and calling for “coordinated efforts” to prevent terrorist infiltration across Lebanon’s eastern border.⁴⁰ In a cabinet meeting on July 5, President Aoun praised LAF efforts to combat terrorism and warned that Syrian refugee camps in Lebanon were turning into “enabling environments for terrorism.”⁴¹

Hezbollah Offensive Near Aarsal

Both the LAF and Hezbollah have deployed forces at various points along Lebanon’s eastern border to prevent the infiltration of militants from Syria. In May 2017, Hezbollah withdrew from a 67 km area stretching from the Masnaa border crossing with Syria (the primary official land crossing between the two countries) to Aarsal, and was replaced by LAF forces.⁴² Hezbollah leader Hasan Nasrallah called on HTS militants to leave Aarsal, suggesting that Hezbollah could take military action if needed. However, some Lebanese politicians argued that the job of clearing militants from Aarsal should rest with the Lebanese government alone.⁴³

In late July, Hezbollah began operations around Aarsal. Within days, Nasrallah announced that Hezbollah had retaken most of the territory held by HTS. On July 27, a cease-fire was announced between Hezbollah and HTS fighters, brokered by Lebanon’s Chief of General Security.⁴⁴ As part of the agreement, HTS fighters agreed to relocate with their families to Syria’s Idlib province. Nasrallah stated that “we will be ready to hand all the recaptured Lebanese lands and positions over to the Lebanese Army if the army command requests this and is ready to take responsibility for them.”⁴⁵ Then-Prime Minister Hariri said that the LAF did not participate in Hezbollah’s operations around Aarsal.⁴⁶ However, in a public address, Nasrallah stated that the LAF secured the area to the west of Aarsal to ensure that HTS militants along the border did not escape into Lebanon.⁴⁷

Nasrallah has characterized the LAF as a “partner” and a “pillar” in what Hezbollah has described as the “golden formula, which means the resistance, the Army, and the people.”⁴⁸ Praising the role of the LAF in the July Aarsal operation, Nasrallah stated, “What the Lebanese Army did around Aarsal, on the outskirts of Aarsal, and along the contact line within the Lebanese territories was

³⁹ “Lebanon refugee camps hit by five suicide bombers,” *BBC*, June 30, 2017.

⁴⁰ “Hezbollah Hails the Lebanese Army Raids in Aarsal, Calls for Unifying Efforts,” *Al-Manar TV Online*, OSE LIR2017063082222656, June 30, 2017.

⁴¹ “Aoun: Refugees Encampments Could Turn into Safe Haven for Terrorism,” *Naharnet*, OSE LIR2017070549531681,” July 5, 2017; “Cabinet pledges more progress on key public issues, postpones refugee return discussion,” *The Daily Star*, July 5, 2017.

⁴² “Lebanese army takes over Hizbullah positions on Syrian border,” *Jane’s Defense Weekly*, May 30, 2017.

⁴³ “MP Hourri blasts Hezbollah role in Aarsal,” *Daily Star*, July 13, 2017.

⁴⁴ “Ceasefire Deal Agreed in Aarsal Outskirts,” *National News Agency*, July 27, 2017.

⁴⁵ “Nasrallah Praises Lebanese Army’s Performance, Says Hizballah Ready to Hand Aarsal Areas to Army,” Open Source Enterprise LIR2017072669128404, July 26, 2017.

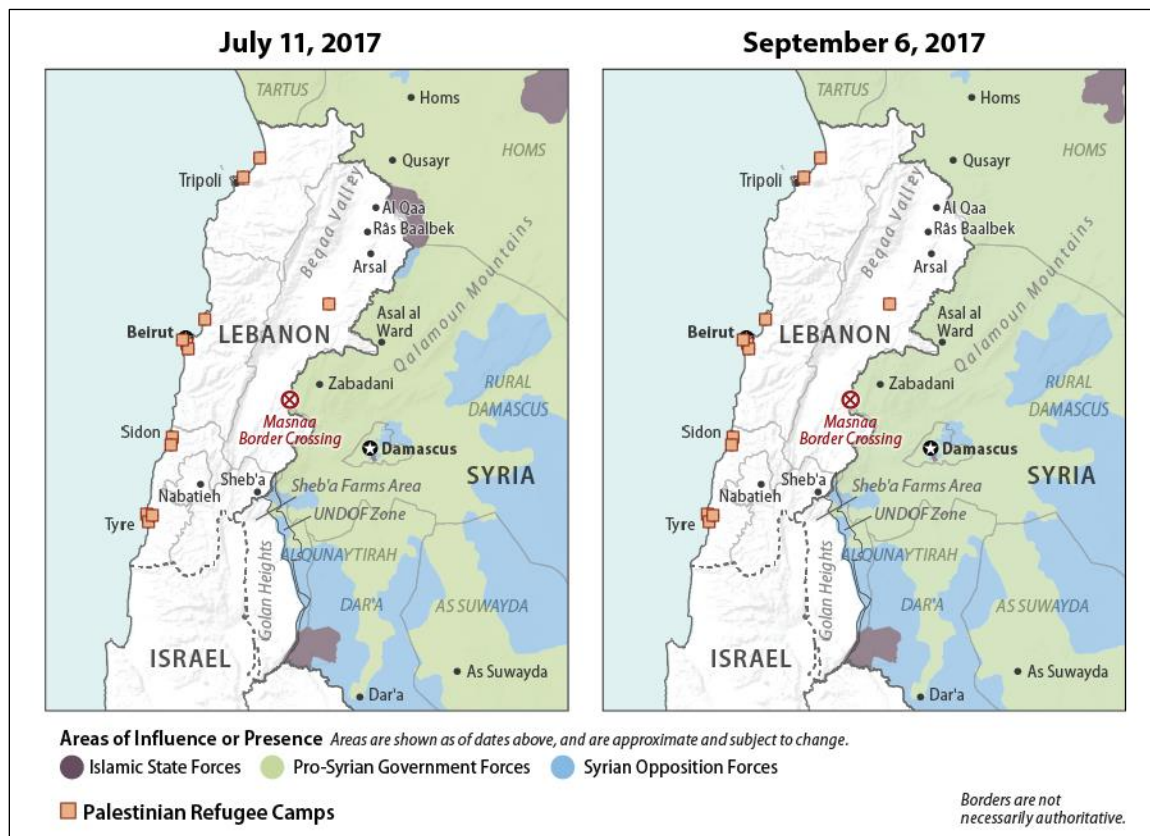
⁴⁶ “Saad Hariri: The Full Transcript,” *Politico*, July 31, 2017.

⁴⁷ “Nasrallah Praises Lebanese Army’s Performance, Says Hizballah Ready to Hand Aarsal Areas to Army,” Open Source Enterprise LIR2017072669128404, July 26, 2017.

⁴⁸ Open Source Enterprise, “Revision: Nasrallah Says ‘Resistance Is Becoming Stronger Day by Day,’ Israel Has No Appetite for War,” August 13, 2017.

essential for scoring this victory.”⁴⁹ It is unclear whether Nasrallah’s praise of the LAF is intended in part to complicate the LAF’s relationship with international partners, including the United States.

Figure 3. Border Operations Target Militants in Lebanon’s Northeast



Source: Created by CRS using area of influence data from IHS Conflict Monitor.

LAF Border Operation Against the Islamic State

In August, the Lebanese government launched a 10-day offensive to clear Islamic State militants from the outskirts of the towns of Ras Baalbeck and Al Qaa, north of Arsal along Lebanon’s northeast border. According to media reports, the LAF operation occurred in conjunction with a separate but simultaneous attack on the militants by Syrian government and Hezbollah forces from the Syrian side of the border, trapping the militants in a small enclave.⁵⁰ On August 30, LAF Commander General Joseph Aoun declared the operation, which resulted in the deaths of seven LAF soldiers and dozens of IS fighters, complete.⁵¹ In a phone call with CENTCOM Commander

⁴⁹ “Nasrallah Praises Lebanese Army’s Performance, Says Hezbollah Ready to Hand Aarsal Areas to Army,” Open Source Enterprise LIR2017072669128404, July 26, 2017.

⁵⁰ “Ceasefire halts Syria-Lebanon border fight against Islamic State,” *Reuters*, August 27, 2017.

⁵¹ “President, Army chief declare victory over Daesh,” *Daily Star*, August 31, 2017.

General Votel, General Aoun “confirmed that the U.S. aid provided to the LAF had an efficient and main role in the success of this operation.”⁵²

The conclusion of the operation also involved an agreement to allow the roughly 300 IS fighters to withdraw from their besieged enclave along with their families, and head to IS-controlled Abu Kamal on the Syrian border with Iraq. In return, the Islamic State revealed the location of the remains of nine LAF soldiers captured in 2014, as well as the bodies of five Hezbollah fighters.⁵³ The IS convoy departed the Lebanese border in late August, but airstrikes by U.S. military forces in eastern Syria sought to prevent the convoy from linking up with IS fighters in Abu Kamal.

Hezbollah

Lebanese Hezbollah, a Shia Islamist movement, is Iran’s most significant nonstate ally. Iran’s support for Hezbollah, including providing thousands of rockets and short-range missiles, helps Iran acquire leverage against key regional adversaries such as Israel and Saudi Arabia. It also facilitates Iran’s intervention on behalf of a key ally, the Asad regime in Syria. The Asad regime has been pivotal to Iran and Hezbollah by providing Iran a secure route to deliver weapons to Hezbollah. Iran has supported Hezbollah through the provision of “hundreds of millions of dollars” to the group, in addition to training “thousands” of Hezbollah fighters inside Iran.⁵⁴

Clashes with Israel

Hezbollah emerged in the early 1980s during the Israeli occupation of southern Lebanon. Israel invaded Lebanon in 1978 and again in 1982, with the goal of pushing back (in 1978) or expelling (in 1982) the leadership and fighters of the Palestine Liberation Organization (PLO)—which used Lebanon as a base to wage a guerrilla war against Israel until the PLO’s relocation to Tunisia in 1982.⁵⁵ In 1985 Israel withdrew from Beirut and its environs to southern Lebanon—a predominantly Shia area. Shia leaders disagreed about how to respond to the Israeli occupation, and many of those favoring a military response gradually coalesced into what would become Hezbollah.⁵⁶ The group launched attacks against Israeli Defense Forces (IDF) and U.S. military and diplomatic targets, portraying itself as the leaders of resistance to foreign military occupation.

In May 2000, Israel withdrew its forces from southern Lebanon, but Hezbollah has used the remaining Israeli presence in the Sheb’a Farms (see below) and other disputed areas in the Lebanon-Syria-Israel triborder region to justify its ongoing conflict with Israel—and its continued existence as an armed militia alongside the Lebanese Armed Forces.

⁵² “Command General Joseph Votel to the Armed Forces Commander General Joseph Aoun,” August 30, 2017, <http://www.lebarmy.gov.lb>.

⁵³ “DNA Results Match Identities of Soldiers,” OSE Report LIR2017090640829530, September 6, 2017; “In a deal, remains of Lebanon soldiers held by IS located,” *Washington Post*, August 27, 2017.

⁵⁴ Department of State Country Reports on Terrorism 2015, p. 300. The Obama Administration’s 2010 report on Iran’s military power stated that Iran provides “roughly \$100-200 million per year in funding to support Hizballah.” (U.S. Department of Defense, Annual Unclassified Report on Military Power of Iran, Required by Section 1245 of the FY2010 National Defense Authorization Act [P.L. 111-84], April 2010).

⁵⁵ According to various accounts, Israel’s 1982 invasion included additional goals of countering Syrian influence in Lebanon and helping establish an Israel-friendly Maronite government there.

⁵⁶ The Shia group Amal took a more nuanced view of the Israeli occupation, which it saw as breaking the dominance of Palestinian militia groups operating in southern Lebanon.

The Sheb'a Farms Dispute

When Israel withdrew from southern Lebanon in 2000, several small but sensitive territorial issues were left unresolved, notably, a roughly 10-square-mile enclave at the southern edge of the Lebanese-Syrian border known as the Sheb'a Farms. Israel did not evacuate this enclave, arguing that it is not Lebanese territory but rather is part of the Syrian Golan Heights, which Israel occupied in 1967. Lebanon, supported by Syria, asserts that this territory is part of Lebanon and should have been evacuated by Israel when the latter abandoned its self-declared security zone in May 2000.

Ambiguity surrounding the demarcation of the Lebanese-Syria border has complicated the task of determining ownership over the area. France, which held mandates for both Lebanon and Syria, did not define a formal boundary between the two, although it did separate them by administrative divisions. Nor did Lebanon and Syria establish a formal boundary after gaining independence from France in the aftermath of World War II—in part due to the influence of some factions in both Syria and Lebanon who regarded the two as properly constituting a single country.

Advocates of a "Greater Syria" in particular were reluctant to establish diplomatic relations and boundaries, fearing that such steps would imply formal recognition of the separate status of the two states. The U.N. Secretary General noted in May 2000 that "there seems to be no official record of a formal international boundary agreement between Lebanon and the Syrian Arab Republic."⁵⁷ Syria and Lebanon did not establish full diplomatic relations until 2008.⁵⁸

2006 Hezbollah-Israel War

Hezbollah's last major clash with Israel occurred in 2006—a 34-day war that resulted in the deaths of approximately 1,190 Lebanese and 163 Israelis,⁵⁹ and the destruction of large parts of Lebanon's civilian infrastructure. The war began in July 2006, when Hezbollah captured two members of the IDF along the Lebanese-Israeli border. Israel responded by carrying out air strikes against suspected Hezbollah targets in Lebanon, and Hezbollah countered with rocket attacks against cities and towns in northern Israel. Israel subsequently launched a full-scale ground operation in Lebanon with the stated goal of establishing a security zone free of Hezbollah militants. Hostilities ended following the issuance of U.N. Security Council Resolution (UNSCR) 1701, which imposed a cease-fire.

In the years since the 2006 war, Israeli officials have sought to draw attention to Hezbollah's weapons buildup—including reported upgrades to the range and precision of its projectiles—and its alleged use of Lebanese civilian areas as strongholds.⁶⁰ In addition, Israel has reportedly struck targets in Syria or Lebanon in attempts to prevent arms transfers to Hezbollah in Lebanon.⁶¹ In February 2016, Israeli Prime Minister Netanyahu said:

We will not agree to the supply of advanced weaponry to Hezbollah from Syria and Lebanon. We will not agree to the creation of a second terror front on the Golan Heights. These are the red lines that we have set and they remain the red lines of the State of Israel.⁶²

⁵⁷ United Nations Security Council, Report of the Secretary-General on the implementation of Security Council resolutions 425 (1978) and 426 (1978), S/2000/460, May 22, 2000.

⁵⁸ Syrian Government, Presidential Decree No. 358, October 14, 2008.

⁵⁹ See "Lebanon"—Amnesty International Report 2007, and "Israel-Hizbullah conflict: Victims of rocket attacks and IDF casualties," Israel Ministry of Foreign Affairs.

⁶⁰ William Booth, "Ten years after last Lebanon war, Israel warns next one will be far worse," *Washington Post*, July 23, 2016.

⁶¹ See, e.g., "Israel has hit 'dozens' of Hezbollah arms transfers, Netanyahu says," *Times of Israel*, April 11, 2016; Anne Barnard, "Lebanon: New Skirmish Between Israel and Hezbollah in Disputed Territory," *New York Times*, January 5, 2016.

⁶² Isabel Kershner, "Netanyahu Welcomes Cease-Fire in Syria, but Adds a Warning," *New York Times*, February 29, 2016.

Some media reporting in 2017 has focused on claims that Iran has helped Hezbollah set up underground factories in Lebanon to manufacture weapons previously only available from outside the country.⁶³ In August 2017, the former commander of the Israel Air Force (IAF) claimed that Israel had hit convoys of weapons headed to Hezbollah almost 100 times since civil war broke out in Syria in 2012.⁶⁴ In September 2017, the IAF allegedly struck an area in northwestern Syria—reportedly targeting a Syrian chemical weapons facility⁶⁵ and/or a factory producing precision weapons transportable to Hezbollah.⁶⁶ In October, the IAF acknowledged striking a Syrian anti-aircraft battery that apparently targeted Israeli aircraft flying over Lebanon.⁶⁷ Russia's actions could affect future Israeli operations, given that it maintains advanced air defense systems and other interests in Syria.

United Nations Force in Lebanon

Since 1978, the United Nations Force in Lebanon (UNIFIL) has been deployed in the Lebanon-Israel-Syria triborder area.⁶⁸ UNIFIL's initial mandate was to confirm the withdrawal of Israeli forces from southern Lebanon, restore peace and security, and assist the Lebanese government in restoring its authority in southern Lebanon (a traditional Hezbollah stronghold). In May 2000, Israel withdrew its forces from southern Lebanon. The following month, the United Nations identified a 120 km line between Lebanon and Israel to use as a reference for the purpose of confirming the withdrawal of Israeli forces. The Line of Withdrawal, commonly known as the Blue Line, is not an international border demarcation between the two states.

Following the 2006 Israel-Hezbollah war, UNIFIL's mandate was expanded via UNSCR 1701 (2006) to including monitoring the cessation of hostilities between the two sides, accompanying and supporting the Lebanese Armed Forces as they deployed throughout southern Lebanon, and helping to ensure humanitarian access to civilian populations. UNSCR 1701 also authorized UNIFIL to assist the Lebanese government in the establishment of “an area free of any armed personnel, assets and weapons other than those of the Government of Lebanon and of UNIFIL” between the Blue Line and the Litani River. In 2007, Israel and Lebanon agreed to visibly mark the Blue Line on the ground. As of July 2017, UNIFIL has measured 282 points along the Blue Line and constructed 268 Blue Line Barrels as markers.⁶⁹

UNIFIL is headquartered in the Lebanese town of Naqoura and maintains more than 10,500 peacekeepers drawn from 40 countries.⁷⁰ This includes more than 9,600 ground troops and over 850 naval personnel of the Maritime Task Force. U.S. personnel do not participate in UNIFIL, although U.S. contributions to U.N. peacekeeping programs support the mission. The United States provides security assistance to the Lebanese Armed Forces aimed at supporting Lebanese government efforts to implement UNSCR 1701.

⁶³ See, e.g., Gili Cohen, "Iran Reportedly Built Weapons Factories in Lebanon for Hezbollah," Ha'aretz, March 14, 2017.

⁶⁴ "Israel said to have hit Hezbollah convoys dozens of times," Times of Israel, August 17, 2017.

⁶⁵ "Israel airstrike hits suspected Syrian chemical weapons plant," Deutsche Welle, September 7, 2017.

⁶⁶ Ben Caspit, "Will Russia Tolerate Israeli Actions in Syria?" Al-Monitor Israel Pulse, September 11, 2017.

⁶⁷ "Israel Carries Out Air Strike on Syrian Anti-Aircraft Battery," Reuters, October 17, 2017.

⁶⁸ The formal boundaries dividing the three countries remain disputed.

⁶⁹ "Working with UNIFIL, LAF confirms 8 new Blue Line points," unifil.unmissions.org, July 13, 2017.

⁷⁰ United Nations Interim Force in Lebanon, <http://unifil.unmissions.org/faqs>.

Since the discovery in 2009 of large offshore gas fields in the Mediterranean, unresolved issues over the demarcation of Lebanon's land border with Israel have translated into disputes over maritime boundaries, and in 2011 Lebanese authorities called on the U.N. to establish a maritime equivalent of the Blue Line. UNIFIL has maintained a Maritime Task Force since 2006, which assists the Lebanese Navy in preventing the entry of unauthorized arms or other materials to Lebanon. However, U.N. officials have stated that UNIFIL does not have the authority to establish a maritime boundary.⁷¹ (For more information, see “Eastern Mediterranean Energy Resources and Disputed Boundaries,” below.)

UNIFIL continues to monitor violations of UNSCR 1701 by all sides, and the U.N. Secretary General reports regularly to the U.N. Security Council on the implementation of UNSCR 1701. These reports have listed violations by Hezbollah—including an April 2017 media tour along the Israeli border—as well as violations by Israel—including “almost daily” violations of Lebanese airspace.⁷²

In January 2017, UNIFIL underwent a strategic review. The scope of the review did not include the mandate of the mission or its authorized maximum strength of 15,000 troops. In March, the results of the strategic review were presented to the Security Council. The review found that “overall, the Force was well configured to implement its mandated tasks,” and also outlined a number of recommendations.⁷³

On August 30, 2017, the U.N. Security Council voted to renew UNIFIL's mandate for another year. The vote followed what U.S. Ambassador to the U.N. Nikki Haley described as “tense negotiations” over the mission's mandate,⁷⁴ with the United States and Israel reportedly pushing for changes that would allow UNIFIL to access and search private property for illicit Hezbollah weapons stockpiles or other violations of UNSCR 1701.⁷⁵ Ambassador Haley has been critical of UNIFIL, which she argues has failed to prevent Hezbollah violations of UNSCR 1701 and whose patrols in southern Lebanon are sometimes restricted by roadblocks.⁷⁶

Changes to UNIFIL's mandate were opposed by countries contributing troops to the mission, including France and Italy.⁷⁷ Lebanon's Foreign Minister also called on the Security Council to renew the mission's mandate without change. Other critics of the proposed changes questioned whether troop-contributing countries would be willing to deploy forces for a mission that could require direct confrontation with Hezbollah in heavily Shia areas of southern Lebanon.⁷⁸

The renewal of UNIFIL's mandate in UNSCR 2373 included limited wording changes, which were praised by all sides.⁷⁹ The new language requests that the existing U.N. Secretary General's reports on the implementation of UNSCR 1701 include, among other things, “prompt and

⁷¹ United Nations Security Council, Fifteenth report of the Secretary-General on the implementation of Security Council Resolution 1701 (2006) S/2011/91, February 28, 2011.

⁷² For details, see United Nations Security Council, *Report of the Secretary General on the implementation of Security Council resolution 1701 (2006)* issued every four months.

⁷³ “Letter dated 8 March 2017 from the Secretary-General addressed to the President of the Security Council,” March 9, 2017, S/2017/202.

⁷⁴ Nikki Haley, “Confronting Hezbollah in Lebanon,” *Jerusalem Post*, September 5, 2017.

⁷⁵ OSE Report IMR2017090568616406, “Report Says UNIFIL Mission Extended for One Year, Adjustments ‘Not Up To Washington's Ambitions,’” September 1, 2017.

⁷⁶ Nikki Haley, “Confronting Hezbollah in Lebanon,” *Jerusalem Post*, September 5, 2017.

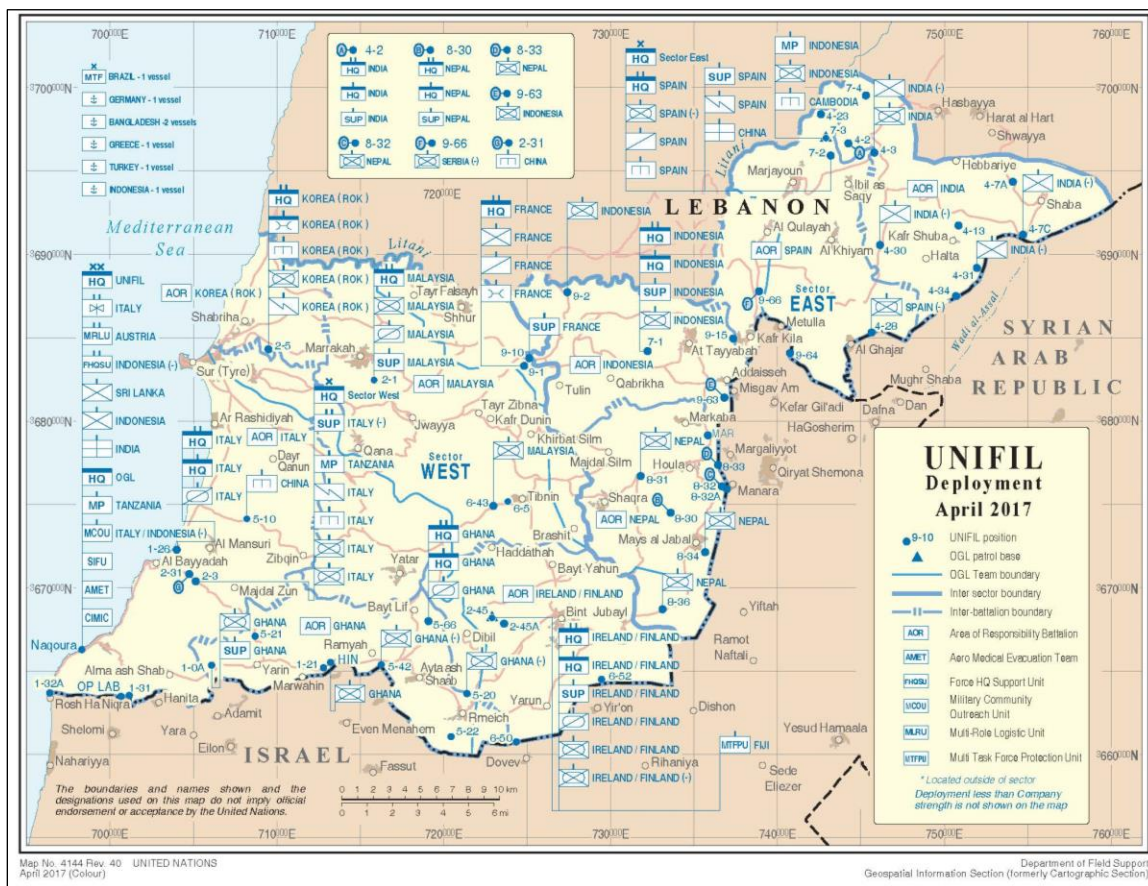
⁷⁷ “Vote on a Resolution Renewing UNIFIL,” *What's in Blue*, August 30, 2017.

⁷⁸ “New UNIFIL mandate? Business as usual,” *Daily Star*, September 1, 2017.

⁷⁹ *Ibid*; “UNIFIL changes provide transparency: Haley,” *Daily Star*, September 6, 2017.

detailed reports on the restrictions to UNIFIL's freedom of movement, reports on specific areas where UNIFIL does not access and on the reasons behind these restrictions."⁸⁰

Figure 4. United Nations Force in Lebanon (UNIFIL) Deployment and Lebanon-Syria-Israel Triborder Area



Source: UNIFIL, April 2017.

Domestic Politics

Hezbollah was widely credited for forcing the withdrawal of Israeli troops from southern Lebanon in 2000, and this elevated the group into the primary political party among Lebanese Shia.⁸¹ In addition, Hezbollah—like other Lebanese confessional groups—vies for the loyalties of its constituents by operating a vast network of schools, clinics, youth programs, private business, and local security. These services contribute significantly to the group's popular support base, although some Lebanese criticize Hezbollah's vast apparatus as "a state within the state." The legitimacy that this popular support provides compounds the challenges of limiting Hezbollah's influence.

Hezbollah has participated in elections since 1992, and it has achieved a modest but steady degree of electoral success. Hezbollah won 10 parliament seats in 2009 and now holds two cabinet posts:

⁸⁰ UN Security Council Resolution 2373 (2017).

⁸¹ Lina Khatib and Maxwell Gardiner, "Lebanon: Situation Report," Carnegie Middle East Center, April 17, 2015.

Minister of State for Parliamentary Affairs Mohammed Fneish and Industry Minister Hussein Hajj Hassan. (The term of the 2009 parliament expired in 2013 but was subsequently extended multiple times due to political deadlock over the enactment of a new electoral law, and is now set to expire in May 2018.) In recent years, Hezbollah candidates have fared well in municipal elections, winning seats in conjunction with allied Amal party representatives in many areas of southern and eastern Lebanon.

Hezbollah has at times served as a destabilizing political force, despite its willingness to engage in electoral politics. In 2008, Hezbollah-led fighters took over areas of Beirut after the March 14 government attempted to shut down the group's private telecommunications network—which Hezbollah leaders described as key to the group's operations against Israel.⁸² Hezbollah has also withdrawn its ministers from the cabinet to protest steps taken by the government (in 2008 when the government sought to debate the issue of Hezbollah's weapons, and in 2011 to protest the expected indictments of Hezbollah members for the Hariri assassination). On both occasions, the withdrawal of Hezbollah and its political allies from the cabinet caused the government to collapse. At other times, Hezbollah leaders have avoided conflict with other domestic actors, possibly in order to focus its resources elsewhere—such as on activities in Syria.

Top Lebanese leaders have acknowledged that despite their differences with Hezbollah, they do confer with the group on issues deemed to be critical to Lebanon's security. In July 2017, then-Prime Minister Saad Hariri stated that although he disagreed with Hezbollah on politics,

when it comes for the sake of the country, for the economy, how to handle those 1.5 million refugees, how to handle the stability, how to handle the governing our country, we have to have some kind of understanding, otherwise we would be like Syria. So, for the sake of the stability of Lebanon, we agree on certain things, and we disagree on political issues that we—until today, we disagree. So, ...there is an understanding or a consensus in the country, with all political parties including the president, [and it] is how to safeguard Lebanon.⁸³

Intervention in Syria

Syria is important to Hezbollah because it serves as a key transshipment point for Iranian weapons. Following Hezbollah's 2006 war with Israel, the group worked to rebuild its weapons cache with Iranian assistance, a process facilitated or at minimum tolerated by the Syrian regime. While Hezbollah's relationship with Syria is more pragmatic than ideological, it is likely that Hezbollah views the prospect of regime change in Damascus as a fundamental threat to its interests—particularly if the change empowers Sunni groups allied with Saudi Arabia.

Hezbollah has played a key role in helping to suppress the Syrian uprising, in part by “advising the Syrian Government and training its personnel in how to prosecute a counter insurgency.”⁸⁴ Hezbollah fighters in Syria have worked with the Syrian military to protect regime supply lines, and to monitor and target rebel positions. They also have facilitated the training of Syrian forces by the IRGC-QF.⁸⁵ The involvement of Hezbollah in the Syrian conflict has evolved since 2011 from an advisory to an operational role, with forces fighting alongside Syrian troops—most

⁸² “Row over Hezbollah phone network,” *Al Jazeera*, May 9, 2008.

⁸³ “Saad Hariri: The Full Transcript,” *Politico*, July 31, 2017.

⁸⁴ “Briefing on the designation of Hezbollah for supporting the Syrian regime,” Department of State Press Release, August 10, 2012.

⁸⁵ *Ibid.*

recently around Aleppo.⁸⁶ The International Institute for Strategic Studies estimated in 2016 that Hezbollah maintains between 4,000 and 8,000 fighters in Syria.⁸⁷ In mid-September, Nasrallah declared that “we have won the war (in Syria)” and described the remaining fighting as “scattered battles.”⁸⁸

Syrian and Palestinian Refugees and Lebanese Policy

Refugees began to stream into Lebanon in 2011, following the outbreak of conflict in neighboring Syria. Initially, Lebanon maintained an open-border policy, permitting refugees to enter without a visa and to renew their residency for a nominal fee. By 2014, Lebanon had the highest per capita refugee population in the world, with refugees equaling one-quarter of the resident population.⁸⁹ (See **Figure 5**.) In May 2015, UNHCR suspended new registration of refugees in response to the government’s request. Thus, while roughly 1 million Syrian refugees were registered with UNHCR in late 2016, officials estimate that the actual refugee presence is closer to 1.2 million to 1.5 million (Lebanon’s prewar population was about 4.3 million).

In addition, there are 450,000 Palestinian refugees registered with UNRWA in Lebanon, although not all of those registered reside in Lebanon. The number of actual Palestinian residents is estimated to be closer to 300,000.⁹⁰ About 20,725 other refugees and asylum seekers are registered in Lebanon; 84% of these are Iraqi refugees.⁹¹

As the number of refugees continued to increase, it severely strained Lebanon’s infrastructure, which was still being rebuilt following the 2006 war between Hezbollah and Israel. It also created growing resentment among Lebanese residents, as housing prices increased and some felt as though an influx of cheap Syrian labor was displacing Lebanese from their jobs. The influx has also affected the Lebanese education system, as roughly 500,000 of the Syrian refugees in Lebanon are estimated to be school-age children.⁹²

⁸⁶ “In Syria’s Aleppo, Shiite militias point to Iran’s unparalleled influence,” *Washington Post*, November 20, 2016.

⁸⁷ *The Military Balance 2016*, International Institute for Strategic Studies.

⁸⁸ “Hezbollah declares Syria victory, Russia says much of country won back,” Reuters, September 12, 2017.

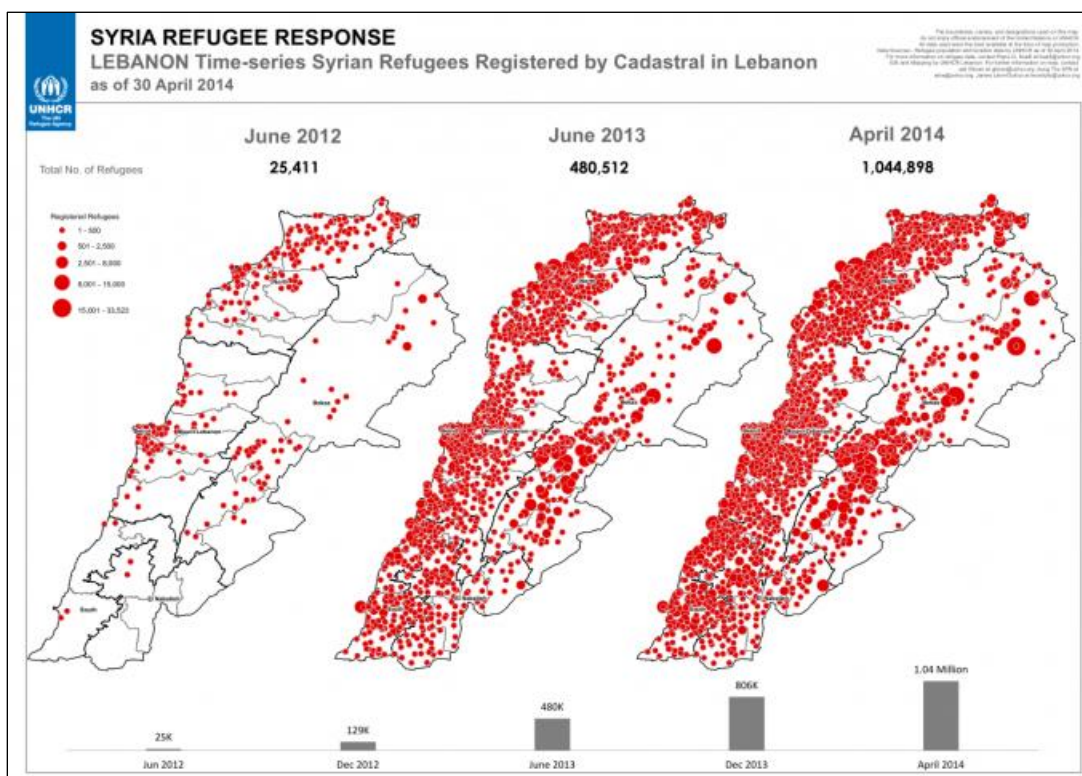
⁸⁹ United Nations High Commissioner for Refugees (UNHCR), “Syrian refugees in Lebanon surpass 1 million,” April 3, 2014.

⁹⁰ “Lebanon,” 2015 Country Reports on Human Rights Practices, State Department Bureau of Democracy, Human Rights, and Labor, April 13, 2016.

⁹¹ “Refugees and Asylum-Seekers,” *Lebanon: Global Focus*, UNHCR.

⁹² Human Rights Watch, *Growing Up Without an Education: Barriers to Education for Syrian Refugee Children in Lebanon*, July 2016.

Figure 5. Registered Syrian Refugees in Lebanon



Source: UNHCR, accessed through reliefweb.int.

The Lebanese government has been unwilling to take steps that it sees as enabling Syrians to become a permanent refugee population akin to the Palestinians—whose militarization in the 1970s was one of the drivers of Lebanon’s 15-year civil war. Some Christian leaders also fear that the influx of largely Sunni refugees could upset the country’s sectarian balance. The government has blocked the construction of refugee camps like those built to house Syrian refugees in Jordan and Turkey, presumably to prevent Syrian refugees from settling in Lebanon permanently. As a result, most Syrian refugees in Lebanon have settled in urban areas, in what UNCHR describes as “sub-standard shelters” (garages, worksites, unfinished buildings) or apartments. Less than 20% live in informal tented settlements.

Entry Restrictions. In May 2014, the government enacted entry restrictions effectively closing the border to Palestinian refugees from Syria.⁹³ In January 2015, the Lebanese government began to implement new visa requirements for all Syrians entering Lebanon, raising concerns among U.S. officials.⁹⁴ Under the new requirements, Syrians can only be admitted if they are able to provide documentation proving that they fit into one of the seven approved categories for entry, which do not include fleeing violence.⁹⁵ While there is an entry category for displaced persons,

⁹³ Amnesty International, *Lebanon: Denied refuge: Palestinians from Syria seeking safety in Lebanon*, July 1, 2014.

⁹⁴ See for example, State Department Daily Press Briefing, January 5, 2015.

⁹⁵ According to Amnesty International, “Category one is for tourism, shopping, business, landlords, and tenants; category two is for studying, category three is for transiting to a third country, category four is for those displaced; category five for medical treatment; category six for an embassy appointment; and category seven for those entering with a pledge of responsibility (a Lebanese sponsor).” See, *Pushed to the Edge: Syrian Refugees Face Increased Restrictions in Lebanon*, Amnesty International, June 2015.

the criteria specifically apply to “unaccompanied and/or separated children with a parent already registered in Lebanon; persons living with disabilities with a relative already registered in Lebanon; persons with urgent medical needs for whom treatment in Syria is unavailable; persons who will be resettled to third countries.”⁹⁶

Legal Status. Refugees registered with UNHCR are required to provide a notarized pledge not to work, as a condition of renewing their residency. Nevertheless, the January 2015 regulations increased the costs of residency renewal to an annual fee of \$200 per person over 15 years of age, beyond the means of the 70% of Syrian refugee households living at or below the poverty line. As a result, most Syrian refugees in Lebanon lost their legal status. To survive, many sought employment in the informal labor market. According to a Human Rights Watch report, the loss of legal status for refugees in Lebanon made them vulnerable to labor and sexual exploitation by employers.⁹⁷ In February 2017, Lebanese authorities lifted the \$200 residency fee for Syrian refugees registered with UNHCR. The waiver will not apply to the estimated 500,000 Syrian refugees who arrived after the Lebanese government directed UNHCR to stop registering refugees in May 2015, or to refugees who renewed their residency through a Lebanese sponsor.⁹⁸

Palestinian Refugees. Palestinian refugees have been present in Lebanon for more than 60 years, as a result of displacements stemming from various Arab-Israeli wars. Like Syrian refugees, Palestinian refugees and their Lebanese-born children cannot obtain Lebanese citizenship.⁹⁹ Unlike Syrian refugees, Palestinian refugees are prohibited from accessing public health or other social services, and Palestinian children cannot attend Lebanese public schools.¹⁰⁰ Palestinian refugees and their descendants cannot purchase or inherit property in Lebanon, and are barred from most skilled professions, including medicine, engineering, and law.

The long-standing presence of Palestinians in Lebanon has shaped the approach of Lebanese authorities to the influx of Syrian refugees. It is unclear whether Lebanese authorities will take a comparable approach to the Syrian population over the long term, particularly as a new generation of Syrian children comes to share Palestinian refugees’ status as stateless persons. Some observers worry that government policies limiting nationality, mobility, and employment for refugees and their descendants risk creating a permanent underclass vulnerable to recruitment by terrorist groups.

International Humanitarian Funding

The U.N. Regional Refugee and Resilience Plan (3RP) is a coordinated regional framework designed to address the impact of the Syria crisis on the five most affected neighboring countries: Lebanon, Jordan, Iraq, Turkey, and Egypt. The 2017 3RP appeal seeks \$5.6 billion and as of November 2017 was funded at 46.5%. The Lebanon Crisis Response Plan (LCRP) is nested within the broader 3RP, and targets not only the roughly 1.2 million Syrian refugees in Lebanon but also some 1 million vulnerable Lebanese whose economic security has been adversely affected by the refugee influx. The LCRP also focuses on strengthening the stability of the Lebanese state and civil society. The 2017 LCRP appeal seeks \$2.75 billion, and as of late September was funded at 27%.¹⁰¹

⁹⁶ Ibid.

⁹⁷ “‘I Just Wanted to be Treated Like a Person’ How Lebanon’s Residency Rules Facilitate Abuse of Syrian Refugees,” Human Rights Watch, January 2016.

⁹⁸ “General Security waives residency fee for over million registered Syrian refugees,” *Daily Star*, February 16, 2017.

⁹⁹ Citizenship in Lebanon is derived exclusively from the father. Thus, a child born to a Palestinian refugee mother and a Lebanese father could obtain Lebanese citizenship. However, a Palestinian refugee father would transmit his stateless status to his children, even if the mother was a Lebanese citizen.

¹⁰⁰ “Lebanon,” State Department Annual Country Reports on Human Rights, 2015.

¹⁰¹ UN OCHA, Humanitarian Bulletin: Lebanon, 1 August – 31 October 2017.

Return of Syrian Refugees

Since June 2017, the LAF has facilitated the return of several hundred Syrian refugees from Aarsal to the Syrian town of Asal al Ward, along the Syrian-Lebanese border.¹⁰² Some sources report that Hezbollah was involved in brokering the agreement that led to the refugees' return.¹⁰³ The U.N. High Commissioner for Refugees (UNHCR) has said that the agency is not involved in the agreement and is not encouraging the large-scale return of refugees to Syria. Lebanese politicians remain divided over the issue of whether Lebanon should work directly with the Syrian government to facilitate the return of Syrian refugees. In late July, thousands of Syrian refugees in Lebanon began to return to Syria, in what some reports described as "phase II" of the cease-fire agreement between Hezbollah and HTS that allowed HTS fighters and their families to relocate to Syria.¹⁰⁴ (See "Hezbollah Offensive Near Aarsal.") It is unclear whether the refugees, who were transferred to Syria's opposition-held Idlib province, departed Lebanon voluntarily. In August, the United Nations Office for the Coordination of Humanitarian Affairs (UNOCHA) stated,

The UN and the humanitarian community had no part in reaching this agreement and have repeatedly expressed deep concern at the continuing use of such "local agreements", which do not appear to meet international legal standards or humanitarian principles. Such movements should be voluntary and within a conducive protection environment.¹⁰⁵

In addition to the agreement between Hezbollah and HTS, a separate agreement was reached between Hezbollah and the Syrian opposition group Saraya Ahl al Sham to evacuate roughly 3,000 people from northeastern Lebanon to the Qalamoun region of Syria.

Economy and Fiscal Issues

Lebanon's economy is service oriented (69.5% of GDP), and primary sectors include banking and financial services as well as tourism. The country faces a number of economic challenges, including high unemployment and the fourth-highest debt-to-GDP ratio in the world.¹⁰⁶ In addition, the war in neighboring Syria has significantly affected Lebanon's traditional growth sectors—tourism, real estate, and construction. Economic growth has slowed from an average of 8% between 2007 and 2009 to 1% to 2% since the outbreak of the Syrian conflict in 2011.¹⁰⁷ Foreign direct investment fell 68% from 2011 to 2012,¹⁰⁸ and public debt reached 148% of GDP in 2016.¹⁰⁹

The Lebanese government is unable to consistently provide basic services such as electricity, water, and waste treatment, and the World Bank notes that the quality and availability of basic public services is significantly worse in Lebanon than both regional and world averages.¹¹⁰ As a

¹⁰² "More than 50 Syrian refugee families return to Syria," *National News Agency*, June 10, 2017; "The return of Syrian refugee families from the camps of Aarsal to the village of Essal el-Ward in Syria," July 12, 2017, <http://www.lebarmy.gov.lb>.

¹⁰³ "Refugees return to Syria from Lebanon in Hezbollah-mediated deal," *Reuters*, July 12, 2017.

¹⁰⁴ "Thousands to return to Syria under Phase II of Aarsal deal," *Daily Star*, July 31, 2017.

¹⁰⁵ OCHA, "Turkey | Syria: Response to the Evacuation from Aarsal/Flita Mountains to North-western Syria," August 11, 2017.

¹⁰⁶ "Lebanon," CIA World Factbook, December 20, 2016.

¹⁰⁷ "Lebanon," CIA World Factbook, December 20, 2016.

¹⁰⁸ "FDI Declines by 68Pct in 2012 to \$1.1 billion," *The Daily Star*, March 19, 2013.

¹⁰⁹ "IMF Staff Concludes Visit to Lebanon," IMF Press Release No. 17/347, September 13, 2017.

¹¹⁰ World Bank, *Lebanon Economic Monitor*, Fall 2015, pp. 24-29.

result, citizens rely on private providers, many of whom are affiliated with political parties. The retreat of the state from these basic functions has enabled a patronage network whereby citizens support political parties—including Hezbollah—in return for basic services.

Unresolved political dynamics have exacerbated Lebanon’s economic and fiscal struggles. Between 2014 and 2016, when the office of the presidency remained unfilled, Lebanon lost international donor funding when parliamentary boycotts prevented the body from voting on key matters, including the ratification of loan agreements. In March, Lebanon’s cabinet approved a 2017 state budget and referred the draft budget to Parliament. In October, Parliament voted to pass the budget—the first time since 2005 that a state budget has been approved.¹¹¹ Lebanon has forecast a fiscal deficit for 2017 of \$5.2 billion, or 8.7% of GDP. In March, Lebanon issued \$3 billion in Eurobonds to finance the deficit, and financial officials have suggested that Lebanon may tap the Eurobond market again this year.¹¹²

Lebanon’s economy is also affected by fluctuations in the country’s relationship to the Gulf states, which are a key source of tourism, foreign investment, and aid. In early 2016, Saudi Arabia suspended \$3 billion in pledged aid to Lebanon’s military after Lebanon’s foreign minister declined to endorse an otherwise unanimous Arab League statement condemning attacks against Saudi diplomatic missions in Iran.¹¹³ Saudi Arabia and other Gulf states instituted a travel warning to Lebanon and urged their citizens to leave the country—impacting Lebanon’s real estate and tourism sectors, which depend on spending by wealthy Gulf visitors. In January 2017, President Aoun visited Saudi Arabia—his first foreign visit as president—in an effort to rebuild bilateral ties and resume military assistance.

Despite these numerous challenges, the Central Bank of Lebanon under the leadership of long-serving Governor Riad Salameh has played a stabilizing role. The Central Bank maintains roughly \$41 billion in foreign reserves, and the Lebanese pound, which is pegged to the dollar, has remained stable. Despite sporadic violence targeting Lebanese banks, Salameh has supported the implementation of the Hizballah International Financing Prevention Act, which seeks to bar from the U.S. financial system any bank that knowingly engages with Hezbollah. (See “Recent Legislation,” below.)

Eastern Mediterranean Energy Resources and Disputed Boundaries

In 2010, the U.S. Geological Survey estimated that there are considerable undiscovered oil and gas resources that may be technically recoverable in the Levant Basin, an area that encompasses coastal areas of Syria, Lebanon, Israel, Gaza, and Egypt and adjacent offshore waters.¹¹⁴

U.S. officials believe that the eventual production of gas resources in Lebanese waters could be a “great boon” to the Lebanese economy,¹¹⁵ and are working with Lebanese and Israeli leaders to resolve maritime boundary disagreements. Israel and Lebanon hold differing views of the correct delineation points for their joint maritime boundary relative to the Israel-Lebanon 1949 Armistice

¹¹¹ “Lebanon Passes First State Budget in 12 Years as Deadlock Eases,” *Bloomberg*, October 20, 2017.

¹¹² “Lebanon may tap debt markets again to finance fiscal deficit,” *The National*, August 16, 2017.

¹¹³ “Saudis Cut Off Funding for Military Aid to Lebanon,” *New York Times*, February 19, 2016.

¹¹⁴ USGS, Assessment of Undiscovered Oil and Gas Resources of the Levant Basin Province, Eastern Mediterranean, March 2010.

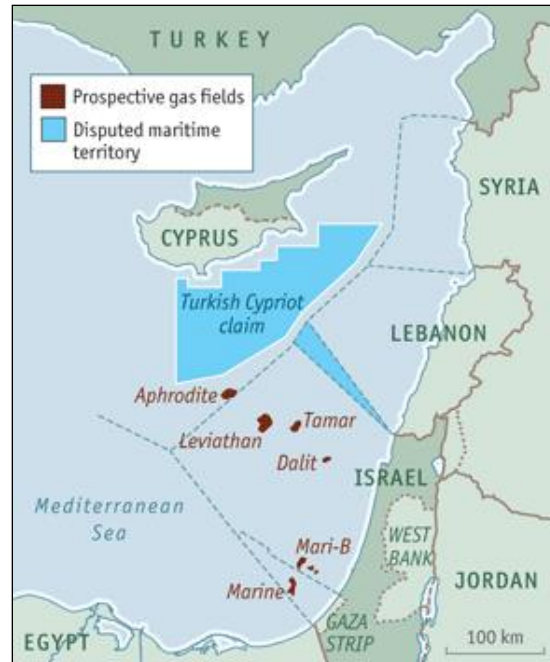
¹¹⁵ Testimony of Acting Deputy Assistant Secretary of State for Near Eastern Affairs Lawrence Silverman before the Senate Foreign Relations Subcommittee on Near Eastern and South and Central Asian Affairs, February 25, 2014.

Line that serves as the de facto border between the two countries.¹¹⁶ Lebanon objects to an Israeli-Cypriot agreement that draws a specific maritime border delineation point relative to the 1949 Israel-Lebanon Armistice Line and claims roughly 330 square miles of waters that overlap with areas claimed by Israel.

The discovery of resources by Israel near the maritime boundary and the presumption that there are Lebanese resources close to the disputed area has amplified controversy over the disagreement. Both Israeli and Lebanese officials have taken steps to assert and protect their respective claims. The Obama Administration sought to mediate the dispute privately, and press reports suggest the U.S. approach has sought to allow Lebanon to begin exploration and production activities in areas not subject to dispute while Lebanese differences with Israel regarding disputed areas are more fully addressed. After a three-year delay, Lebanon's Energy Ministry in January 2017 announced that it would auction energy-development rights to five offshore areas. The announcement followed the approval by the Lebanese cabinet of two decrees defining the exploration blocks and setting out conditions for tenders and contracts.

For additional information, see CRS Report R44591, *Natural Gas Discoveries in the Eastern Mediterranean*, by (name redacted)

Figure 6. Eastern Mediterranean Maritime Territory Disputes and Energy Resources



Source: *The Economist*.

Notes: Boundaries and locations are approximate and not necessarily authoritative.

U.S. Policy¹¹⁷

The United States has sought to bolster forces that could serve as a counterweight to Syrian and Iranian influence in Lebanon through a variety of military and economic assistance programs. U.S. policy also has sought to preserve stability in Lebanon, in part by fostering economic growth and insulating Lebanon from the effects of the Syria conflict. In July 2017, then-Prime Minister Hariri led an official delegation to Washington, accompanied by Foreign Minister Gebran Bassil and Central Bank Governor Riad Salameh. In his public remarks in Washington, Hariri called for additional aid to Lebanon, arguing that it was more cost-effective for the international community to assist refugees in Lebanon than it would be to cover the costs of refugees once they reached Europe. Hariri also stated that Lebanon was seeking grants and concessional loans, including funds for Lebanon's planned multiyear capital investment program, which is designed to rebuild Lebanese infrastructure. During the visit, the State Department announced an additional \$140 million in humanitarian aid to Lebanon to address the needs of Syrian refugees and Lebanese host

¹¹⁶ The Armistice Line is not the final agreed border between Lebanon and Israel, but coastal points on the line appear likely to be incorporated into any future Lebanon-Israel border agreement.

¹¹⁷ This section was prepared with the assistance of Christopher Blanchard.

communities. Upon returning to Lebanon, Hariri told reporters, “We must protect the Lebanese economy in the face of sanctions which the U.S. House of Representatives and the Senate are preparing to apply. This was the main reason for the visit, in addition, of course, to securing [military] aid to fight terrorism.”¹¹⁸

Economic Aid

U.S. economic aid to Lebanon is designed to promote democracy, stability, and economic growth, particularly in light of the challenges posed by the ongoing conflict in neighboring Syria. The influx of over 1 million Syrian refugees into Lebanon has strained the already weak infrastructure of local host communities. Slow economic growth and high levels of public debt have limited government spending on basic public services, and this gap has been filled by various confessional groups affiliated with local politicians. In light of these challenges, U.S. programs are aimed at increasing the capacity of the public sector to provide basic services to both refugees and Lebanese host communities. This includes reliable access to potable water, sanitation, and health services. It also involves increasing the capacity of the public education system to cope with the refugee influx. Other U.S. programs are designed to foster inclusive economic growth, particularly among impoverished and underserved communities. This includes efforts to extend financial lending to small firms, create more jobs, and increase incomes. Taken together, these programs also aim to make communities less vulnerable to recruitment by extremist groups.¹¹⁹

Military Aid

Current U.S. security assistance priorities reflect increased concern about the potential for Sunni jihadist groups such as the Islamic State to target Lebanon, as well as long-standing U.S. concerns about Hezbollah and preserving Israel’s qualitative military edge (QME). Over time, these concerns have led the United States to equip Lebanese security forces with types and quantities of weapons that provide them with advantages over potential nonstate adversaries, but would not seriously threaten Israel’s armed forces in the event of their seizure or misuse. Congress places several certification requirements on U.S. assistance funds for Lebanon annually in an effort to prevent their misuse or the transfer of U.S. equipment to Hezbollah or other designated terrorists.

U.S. security assistance to the Lebanese Armed Forces increased after the 2006 war between Hezbollah and Israel, and was aimed at supporting the Lebanese government in its efforts to implement UNSCR 1701. This resolution calls for the LAF to deploy throughout southern Lebanon—an area where Israeli and Hezbollah forces had previously been the predominant armed presence. UNSCR 1701 states that, within Lebanese territory, “there will be no weapons without the consent of the Government of Lebanon and no authority other than that of the Government of Lebanon.”

A series of terrorist attacks in Lebanon by Syria-based extremist groups beginning in 2012 also intensified the pace and scale of U.S. aid. In October 2015, then-U.S. Ambassador David Hale said in Lebanon that “we are more than doubling the baseline amount of U.S. military assistance we are providing to the Lebanese Armed Forces this year compared to last.”¹²⁰ In a November

¹¹⁸ “PM: Understanding with Hezbollah essential for stability,” *Daily Star*, August 1, 2017.

¹¹⁹ For more information, see *USAID/Lebanon Country Development Cooperation Strategy, December 2014 – December 2019*.

¹²⁰ This amount is reflected in the FMF-OCO allocations noted below. It is in addition to the \$59 million CTPF Border Security Program funding also described below. U.S. Embassy Beirut, “Ambassador Hale Highlights Doubling of U.S. Military Assistance to Army,” October 2, 2015.

2015 hearing, then-Assistant Secretary of State for Near East Affairs Anne Patterson identified the expedited and expanded U.S. assistance efforts to the Lebanese Armed Forces that are now underway as an “extremely high priority.”

In August 2016, U.S. Ambassador to Lebanon Elizabeth Richard announced the delivery of \$50 million in U.S. military equipment to the LAF, and stated that Lebanon was the fifth-largest recipient of U.S. FMF in the world.¹²¹ She also said that the United States had provided \$221 million in equipment and training to the LAF in 2016 alone. CENTCOM Commander General Votel stated that the United States has provided more than \$1.4 billion dollars in security assistance to the LAF since 2005.¹²²

Since late 2014, the United States (in some cases using grants from Saudi Arabia) has delivered Hellfire air-to-ground missiles, precision artillery, TOW-II missiles, M198 howitzers, small arms, and ammunition to Lebanon. Congress also has been notified of a proposed sale of light ground attack aircraft with precision targeting capabilities. In March 2016, U.S. officials delivered three Huey II helicopters to the LAF. Related U.S. training and advisory support is ongoing. The United States conducts annual bilateral military exercises with the LAF. Known as Resolute Response, these exercises include participants from the U.S. Navy, Coast Guard, and Army.

The expansion of U.S. assistance has been funded in part through the allocation of Overseas Contingency Operation-designated Foreign Military Financing (FMF) funds from the State Department and Department of Defense-administered Counterterrorism Partnerships Fund (CTPF) monies under Section 1206/2282 authorities. In engagements with Congress, the State Department notes the multipurpose nature of U.S. assistance to the LAF and makes specific reference to U.N. Security Council Resolution 1701, which “calls upon the Government of Lebanon to secure its borders and other entry points to prevent the entry into Lebanon without its consent of arms or related material.”

U.S. assistance for border security improvements in Lebanon has drawn particular attention from Congress because of threats stemming from the conflict in Syria. As noted above, both Hezbollah and the LAF have deployed forces to the mountainous border area separating Lebanon and Syria in a bid to halt infiltrations. Longer-standing U.S. concerns about improving Lebanon’s border control and security capabilities focus on stemming flows of weapons to Hezbollah and other armed groups in Lebanon, as called for by UNSCR 1701.

In late 2016, photos of a Hezbollah parade showed what appeared to be U.S. M113 armored personnel carriers, raising questions of whether they had been transferred to Hezbollah by the LAF. A State Department spokesperson stated that the department was investigating the reports, but noted that the vehicles are extremely common in the region, suggesting that Hezbollah could have acquired them from other sources.¹²³ Defense Department officials have previously stated that, “the Lebanese Armed Forces have consistently had the best end-use monitoring reporting of any military that we work with, meaning that the equipment that we provide to the Lebanese

¹²¹ “America Delivers \$50 Million in Humvees, Weapons, and Ammunition to the Lebanese Army,” Embassy Beirut press release, August 9, 2016.

¹²² “CENTCOM Commander General Votel Visits Lebanon,” Embassy Beirut press release, August 23, 2016.

¹²³ State Department Daily Press Briefing, November 15, 2016.

Armed Forces, we can account for it at any given time.”¹²⁴ In December 2016, an Israel official stated that Hezbollah had seized the vehicles from the LAF, a claim disputed by U.S. officials.¹²⁵

According to President Trump’s FY2018 budget request to Congress, the Administration is seeking \$103 million in total aid to Lebanon, mostly in economic aid (\$213 million was obligated for Lebanon in FY2016). As part of the Trump Administration proposal to cut 12% of overall bilateral aid to the Middle East and North Africa (from FY2016 enacted levels), FMF grants to a number of regional governments—including Lebanon—would be halted. FMF has been one of the primary sources of U.S. funding for the LAF, along with CTPF funds. Both the House (H.R. 3362) and Senate (S. 1780) FY2018 State and Foreign Operations appropriations bills envision FMF continuing to Lebanon. The Senate appropriations report (S.Rept. 115-152) recommends \$105 million in FMF to Lebanon.

The FY2017 NDAA realigned CTPF funding to Operation and Maintenance, Defense-Wide, and made it available for a wide range of security cooperation activities. To date, Lebanon has received \$42.9 million via CTPF-funded border security improvement programs authorized by Section 1226 of the FY2016 NDAA (P.L. 114-92). Under Section 1226, as amended, DOD may, with State Department concurrence, provide security assistance to the armed forces of Lebanon, Jordan, Egypt, and Tunisia in support of border security improvement efforts on their respective borders with Syria, Iraq, and Libya.

In August 2017, Embassy Beirut announced the delivery of eight M2A2 Bradley Fighting Vehicles and armored field artillery ammunition supply vehicles to the LAF, the first of a total shipment of 32 Bradleys to be delivered in the coming months. Ambassador Richard also stated that the following defense articles had been provided to the LAF in the past 12 months:

- 40 M198 howitzers,
- 50 armored Humvees,
- an Armed Cessna aircraft with Hellfire missiles,
- 55 mortar systems,
- 50 Mark-19 automatic grenade launchers,
- 1,100 machine guns, including 800 50 caliber machine guns,
- 4,000 M4 rifles,
- over 500,000 rounds of ammunition,
- 320 night vision devices and thermal sights, and
- 360 secure communication radios.

Also in August, a Pentagon spokesperson confirmed the presence of U.S. Special Operations Forces in Lebanon, which he described as providing training and support to the LAF.¹²⁶ While he would not comment on the size of the contingent, some observers estimate that more than 70 Special Operations Command Central (SOCCENT) trainers and support personnel operate in

¹²⁴ Andrew Exum, Deputy Assistant Defense Secretary for Middle East Policy, at a hearing entitled “U.S. Policy Towards Lebanon,” before the House Foreign Affairs Subcommittee on Middle East and North Africa, April 28, 2016.

¹²⁵ “Hezbollah is using U.S. weaponry in Syria, according to senior Israeli military officer,” *Reuters*, December 21, 2016; “U.S. refutes Israeli claims of Lebanese APC transfers to Hezbollah,” *Defense News*, December 22, 2016.

¹²⁶ “US Special Forces operating in Lebanon ‘close to Hizballah,’” *The New Arab*, August 6, 2017.

Lebanon at any given time.¹²⁷ According to a U.S. Army publication, U.S. Special Operations Forces have been deployed to Lebanon since at least 2012.¹²⁸

In October 2017, Ambassador Richard announced the delivery of the first two (of six) A-29 Super Tucano aircraft to the Lebanese military, and stated that U.S. support to the LAF in 2017 totaled \$160 million.¹²⁹ Also in October, the Trump Administration notified Congress of its intention to provide more than \$121 million in new Department of Defense support to the LAF Special Forces and LAF Air Force using 10 U.S.C. 333 authority, including helicopters for close air support.

Table I. Select U.S. Assistance Funding for Lebanon-Related Programs

\$, millions, Fiscal Year of Appropriation unless noted

Account/Program	FY2015	FY2016 Actual	FY2017 Request	FY2018 Request
Lebanon				
FMF-OCO	84.1	85.9	105	-
ESF-OCO	65	110	110	-
ESDF-OCO	-	-	-	85
IMET	2.22	2.79	2.75	2.75
INCLE	10	10	-	-
INCLE-OCO	-	10	10	6.25
NADR	4.96	4.76	-	-
NADR-OCO	-	1.8	5.76	9.82
DOD Reimbursement— O&M, Defense- Wide	-	Authorized ^a 40 YTD	-	TBD
DOD Security Cooperation				1,197
CENTCOM				400

Source: U.S. State Department and Defense Department FY2018 Budget Request Materials, May 2017; FY2016 National Defense Authorization Act (P.L. 114-92); FY2016 Consolidated Appropriations Act (P.L. 114-113) and its accompanying explanatory statement; CRS correspondence with State Department and Defense Department officials, February 2016.

Notes: Table does not reflect all funds or programs related to Lebanon. Does not account for all reprogramming actions of prior year funds or obligation notices provided to congressional committees of jurisdiction. Some programs may be designed and implemented in ways that also meet non-IS related objectives. Asterisks denote items where request categories did not match year to year. *FMF* = Foreign Military Financing; *ESF* = Economic Support Fund; *ESDF* = Economic Support and Development Fund; *IMET* = International Military Education and Training; *INCLE* = International Narcotics Control and Law Enforcement; *NADR* = Nonproliferation, Antiterrorism, Demining and Related Programs.

¹²⁷ Aram Nerguizian, “The Lebanese Armed Forces, Hezbollah and the Race to Defeat ISIS,” Center for Strategic and International Studies, July 31, 2017.

¹²⁸ “Operationalizing Strategic Policy in Lebanon,” *Special Warfare*, April-June 2012, <http://www.soc.mil/swcs/swmag/archive/SW2502/SW2502OperationalizingStrategicPolicyInLebanon.html>.

¹²⁹ “AFCENT Commander Jeffrey Harrigian and Ambassador Elizabeth Richard Attend Delivery Ceremony at Hamat Air Base,” U.S. Embassy Beirut, October 31, 2017.

- a. Division C of P.L. 114-113 authorizes the use of this \$5.6 billion fund “to reimburse key cooperating nations for logistical, military, and other support, including access, provided to United States military and stability operations in Afghanistan and to counter the Islamic State of Iraq and the Levant.” The funds may be used “to support the Governments of Jordan and Lebanon, in such amounts as the Secretary of Defense may determine, to enhance the ability of the armed forces of Jordan to increase or sustain security along its borders and the ability of the armed forces of Lebanon to increase or sustain security along its borders, upon 15 days prior written notification to the congressional defense committees outlining the amounts intended to be provided and the nature of the expenses incurred.”

Recent Legislation

Annual appropriations bills have established conditions for ESF and security assistance for Lebanon. Most recently, Section 7041(f) of the 2017 Consolidated Appropriations Act (P.L. 115-31) states that funding for the Lebanese Internal Security Forces (ISF) and the LAF may not be appropriated if either body is controlled by a U.S.-designated foreign terrorist organization. ESF funding for Lebanon may be made available notwithstanding Section 1224 of the FY2003 Foreign Relations Authorization Act, (P.L. 107-228), which states that ESF funds for Lebanon may not be obligated until the President certifies to the appropriate congressional committees that the LAF has been deployed to the Israeli-Lebanese border and that the government of Lebanon is effectively asserting its authority in the area in which the LAF is deployed. FMF assistance to the LAF may not be obligated until the Secretary of State submits to the appropriations committees a spend plan, including actions to be taken to ensure equipment provided to the LAF is used only for intended purposes.

In the 115th Congress, language in proposed aid legislation for Lebanon largely mirrors previous years, with some exceptions reflecting enhanced concern among some Members and the Trump Administration about the LAF’s role and operations in Lebanon. In July 2017, the House Appropriations Committee reported its version of the FY2018 State and Foreign Operations appropriations bill (H.R. 3362) without a notwithstanding provision exempting ESF for Lebanon from the LAF deployment certification requirements of Section 1224 of P.L. 107-228. The committee report on the bill also directed the Administration to submit a report on LAF operations. H.R. 3362 was incorporated into the omnibus bill (H.R. 3354) which the House passed in September. The Senate Appropriations Committee reported version of the bill includes a notwithstanding provision for ESF aid to Lebanon (S. 1780). The House version of the 2018 National Defense Authorization Act (H.R. 2810) would require reporting on threats to the United States posed by Hezbollah operations in Syria and Iranian use of commercial aircraft to support Hezbollah and other groups.

Hizballah International Financing Prevention Act of 2015

In December 2015, the 114th Congress enacted a sanctions bill targeting parties that facilitate financial transactions for Hezbollah’s benefit (H.R. 2297, P.L. 114-102). The Hizballah International Financing Prevention Act of 2015 (HIFPA) requires, inter alia, that the President, subject to a waiver authority, prohibit or impose strict conditions on the opening or maintaining in the United States of a correspondent account or a payable-through account by a foreign financial institution that knowingly

- facilitates a transaction or transactions for Hezbollah;
- facilitates a significant transaction or transactions of a person on specified lists of specially designated nationals and blocked persons, property, and property interests for acting on behalf of or at the direction of, or being owned or controlled by, Hezbollah;

- engages in money laundering to carry out such an activity; or
- facilitates a significant transaction or provides significant financial services to carry out such an activity.

Some Lebanese observers have expressed concern that the legislation could inadvertently damage Lebanon's economy or banking sector if regulations written or actions taken to implement the law broadly target Lebanese financial institutions or lead other jurisdictions to forgo business in Lebanon because of difficulties associated with distinguishing between legitimate and illegitimate institutions and activities.¹³⁰ Items of particular interest to Lebanese parties, as U.S. Treasury officials craft implementing regulations for the law, include whether or not the United States will consider Lebanese government payments of salaries to Hezbollah members who hold public office to be activities of terrorist financing or money laundering concern.

Hezbollah's leader, Hassan Nasrallah, has sought to downplay the effects of this law, stating in a June 2016 speech:

Hizballah's budget, salaries, expenses, arms and missiles are coming from the Islamic Republic of Iran. Is this clear? This is no one's business. As long as Iran has money, we have money. Can we be any more frank about that? Our allocated money is coming to us, not through the banks. Just as we receive rockets with which we threaten Israel, our money is coming to us. No law can prevent this money from reaching us.¹³¹

At the same time, Nasrallah also criticized Lebanese banks for what he described as overcompliance with the legislation, saying, "[...] there are banks in Lebanon that went too far. They were American more than the Americans. They did some things that the Americans did not even ask them to do."¹³²

Lebanese leaders have raised concerns about potential unintended consequences of any new sanctions on groups with ties to Hezbollah, given that Hezbollah is deeply embedded in Lebanon's political and social spheres through its membership in Lebanon's governing coalition and management of a vast network of social services. Some have also noted that sanctions imposing new regulations on the Lebanese banking sector could lower the inflow of foreign remittances into Lebanon, estimated at 15% of the country's GDP.¹³³ According to one analyst, "expatriate remittances support the solvency of Lebanon's banks, thus consolidating the banks' potential to finance the economy, in particular their ability to buy Lebanese treasury bonds."¹³⁴

Since the enactment of HIFPA in late 2015, congressional leaders raised the possibility of imposing additional sanctions on Hezbollah and/or groups that maintain political or economic ties to Hezbollah. Some analysts have argued for the use of secondary sanctions under HIFPA to target Hezbollah associates or allies, emphasizing the involvement of Hezbollah in a range of

¹³⁰ Hassan Al-Qishawi, "Assessing financial sanctions on Hizbullah," *Al Ahrum Weekly* (Egypt), February 18, 2016; and, Jean Aziz, "How Lebanese banks are handling US sanctions on Hezbollah," *Al Monitor* (Washington), January 12, 2016.

¹³¹ Open Source Enterprise, IMR2016062563060930, June 24, 2016.

¹³² *Ibid.*

¹³³ Nicholas Blanford, "US sanctions on Hezbollah cause fallout on Lebanon's economy," *The Arab Weekly*, June 4, 2017; World Bank Open Data Indicators, *Personal remittances, received (% of GDP)*, 2015, <http://data.worldbank.org/indicator/BX.TRF.PWKR.DT.GD.ZS>.

¹³⁴ "Remittances key for Lebanon's economy," *Al Monitor*, November 7, 2014.

transnational criminal activities.¹³⁵ U.S. policymakers have stressed that any new sanctions would seek to target Hezbollah, not the broader Lebanese state.

Hizballah International Financing Prevention Amendments Act of 2017

In July 2017, the Hizballah International Financing Prevention Amendments Act of 2017 was introduced by Representatives Royce and Engel in the House (H.R. 3329) and by Senators Rubio and Shaheen in the Senate (S. 1595).¹³⁶ In late October, H.R. 3329 was passed by the House. The bill expands upon HIFPA 2015 in a number of ways. It would require the President to impose sanctions on foreign persons that he determines to have knowingly provided “significant support” to a fixed list of Hezbollah-linked entities (including, but not limited to, Al Manar TV), as well as sanctions on foreign persons determined to be engaged in fundraising or recruitment activities for Hezbollah. It would require a report on foreign financial institutions that are owned or located in the territory of state sponsors of terrorism, or which facilitate financial transactions for such institutions. It would also require the President to impose sanctions on any agency of a foreign state that knowingly provides significant financial or material support to Hezbollah, as well as sanctions on Hezbollah for transnational criminal activities. The bill includes a national security waiver which would allow the Administration to waive the imposition of sanctions.

According to media reports, the text of the bill was amended to reflect concerns by the Lebanese banking sector that further sanctions could negatively impact Lebanon’s economy. In response to these concerns, the bill language was reportedly narrowed in scope to avoid the possibility of excluding vast segments of Lebanon’s Shia population from the banking system.¹³⁷

Also in October, the House passed H.R. 3342, known as the Sanctioning Hizballah’s Illicit Use of Civilians as Defenseless Shields Act. Introduced by Representative Mike Gallagher in July 2017, the bill would impose sanctions on Iran and Hezbollah for using civilians as human shields.

Outlook

Lebanon’s election of a president in October 2016 after a presidential vacuum lasting over two years brought a measure of stability to the country’s internal politics. However, the resignation of Prime Minister Saad Hariri in November 2017 has raised questions regarding the timing and composition of a new government, particularly as Lebanon appears to be reemerging as an arena for competition and potential conflict between regional rivals.

Hezbollah in recent years has appeared disinclined to foment domestic unrest that could draw key manpower and resources away from its activities in neighboring Syria. In turn, Hezbollah’s superiority to other armed militias in Lebanon could dissuade other Lebanese groups from seeking to resolve disputes through violence.¹³⁸ Until late 2017, external patrons of Lebanon’s political blocs—Iran and Saudi Arabia—were primarily focused on conflicts in Syria and Yemen, which reduced their interest in (or their capacity to support) a new round of confrontation in

¹³⁵ Matthew Levitt, “Attacking Hezbollah’s Financial Network: Policy Options,” testimony submitted to the House Committee on Foreign Affairs, June 8, 2017.

¹³⁶ H.R. 3329 was referred to the House Committees on Foreign Affairs, Financial Services, and Judiciary. S. 1595 was referred to the Senate Committee on Banking, Housing, and Urban Affairs.

¹³⁷ “Changes to proposed U.S. anti-Hezbollah sanctions allay Lebanon’s fears,” *Reuters*, August 27, 2017.

¹³⁸ Paul Salem, “Seven Reasons Why Lebanon Survives—and Three Reasons Why It Might Not,” *Lawfare* blog, August 28, 2016.

Lebanon.¹³⁹ However, as Hezbollah claims victory in the Syria conflict and regional players such as Saudi Arabia assert a more active stance against Iranian influence, some observers question whether the resolution of conflict in Syria would lead to an increase in tensions within Lebanon.¹⁴⁰ Israeli officials continue to warn about Hezbollah activities along the border and about the potential for a future conflict.

Domestically, ongoing tensions between refugees and Lebanese residents could escalate if there is an uptick in terror attacks attributed to Syrian refugees, or if refugee communities are perceived as harboring militants. Over the long term, the presence of over 1 million refugees without adequate access to education, health care, or employment opportunities increases the vulnerability of this population to abuse or recruitment by militant groups, whether for ideological or economic reasons.

Author Contact Information

(name redacted)
Analyst in Middle Eastern Affairs
[redacted]@crs.loc.gov-....

Acknowledgments

The author wishes to acknowledge (name redacted), Specialist in Middle Eastern Affairs, who authored a previous version of this report.

¹³⁹ Ibid.

¹⁴⁰ See for example, Joseph Bahout, “Eye of the Storm,” Carnegie Middle East Center, October 18, 2017.

EveryCRSReport.com

The Congressional Research Service (CRS) is a federal legislative branch agency, housed inside the Library of Congress, charged with providing the United States Congress non-partisan advice on issues that may come before Congress.

EveryCRSReport.com republishes CRS reports that are available to all Congressional staff. The reports are not classified, and Members of Congress routinely make individual reports available to the public.

Prior to our republication, we redacted names, phone numbers and email addresses of analysts who produced the reports. We also added this page to the report. We have not intentionally made any other changes to any report published on EveryCRSReport.com.

CRS reports, as a work of the United States government, are not subject to copyright protection in the United States. Any CRS report may be reproduced and distributed in its entirety without permission from CRS. However, as a CRS report may include copyrighted images or material from a third party, you may need to obtain permission of the copyright holder if you wish to copy or otherwise use copyrighted material.

Information in a CRS report should not be relied upon for purposes other than public understanding of information that has been provided by CRS to members of Congress in connection with CRS' institutional role.

EveryCRSReport.com is not a government website and is not affiliated with CRS. We do not claim copyright on any CRS report we have republished.