



**Congressional
Research Service**

Informing the legislative debate since 1914

Social Security: The Trust Funds

,name redacted,

Analyst in Income Security

,name redacted,

Analyst in Social Policy

August 4, 2016

Congressional Research Service

7-....

www.crs.gov

RL33028

Summary

The Social Security program pays monthly cash benefits to retired or disabled workers and their family members, and to the family members of deceased workers. Program income and outgo are accounted for in two separate trust funds authorized under Title II of the Social Security Act: the Federal Old-Age and Survivors Insurance (OASI) Trust Fund and the Federal Disability Insurance (DI) Trust Fund. Projections show that the OASI fund will remain solvent until 2035, whereas the DI fund will remain solvent until 2023, meaning that each trust fund can pay benefits scheduled under current law *in full and on time* up to that point. Following the depletion of trust fund reserves (2023 for DI and 2035 for OASI), continuing income to each fund is projected to cover 89% of DI scheduled benefits and 77% of OASI scheduled benefits. The two trust funds are legally distinct and do not have authority to borrow from each other. However, Congress has authorized the shifting of funds between OASI and DI in the past to address shortfalls in a particular fund. Therefore, this CRS report discusses the operations of the OASI and DI trust funds on a combined basis, referring to them collectively as the *Social Security trust funds*. On a combined basis, the trust funds are projected to remain solvent until 2034. Following depletion of combined trust fund reserves at that point, continuing income is projected to cover 79% of scheduled benefits.

Social Security is financed by payroll taxes paid by covered workers and their employers, federal income taxes paid by some beneficiaries on a portion of their benefits, and interest income from the Social Security trust fund investments. Social Security tax revenues are invested in U.S. government securities (special issues) held by the trust funds, and these securities earn interest. The tax revenues exchanged for the U.S. government securities are deposited into the General Fund of the Treasury and are indistinguishable from revenues in the General Fund that come from other sources. Because the assets held by the trust funds are U.S. government securities, the trust fund balance represents the amount of money owed to the Social Security trust funds by the General Fund of the Treasury. Funds needed to pay Social Security benefits and administrative expenses come from the redemption or sale of U.S. government securities held by the trust funds.

The Social Security trust funds represent funds dedicated to pay current and future Social Security benefits. However, it is useful to view the trust funds in two ways: (1) as an internal federal accounting concept and (2) as the accumulated holdings of the Social Security program.

For internal accounting purposes, certain accounts within the U.S. Treasury are designated by law as trust funds to track revenues dedicated for specific purposes (as well as expenditures). There are a number of trust funds in the U.S. Treasury, including those for Social Security, Medicare, unemployment compensation, and federal employee retirement.

By law, Social Security tax revenues must be invested in U.S. government obligations (debt instruments of the U.S. government). The accumulated holdings of U.S. government obligations are often viewed as being similar to assets held by any other trust on behalf of the beneficiaries. However, the holdings of the Social Security trust funds differ from those of private trusts because (1) the types of investments the trust funds may hold are limited and (2) the U.S. government is both the buyer and seller of the investments.

This report covers how the Social Security program is financed and how the Social Security trust funds work. It will be updated annually to reflect current projections of the financial status of the Social Security trust funds.

Contents

Introduction	1
How the Social Security Program Is Financed.....	1
The Social Security Trust Funds as Designated Accounts	3
Social Security Trust Fund Revenues.....	3
Social Security Trust Fund Costs	4
Social Security Trust Fund Operations.....	4
Investment of the Social Security Trust Funds.....	10
Off-Budget Status of the Social Security Trust Funds	11
The Social Security Trust Funds as Accumulated Holdings.....	11
The Social Security Trust Funds and the Level of Federal Debt.....	14
The Social Security Trust Funds and Benefit Payments	15

Figures

Figure 1. Ratio of Current Non-Interest Income to Cost for the Social Security Trust Funds, 1957-2033.....	9
--	---

Tables

Table 1. Operations of the Social Security Trust Funds, Historical Period 1957-2015	6
Table 2. Projected Operations of the Social Security Trust Funds, 2016-2033	8
Table 3. Accumulated Holdings of the Social Security Trust Funds, Historical Period 1957-2015.....	13
Table 4. Projected Accumulated Holdings of the Social Security Trust Funds, 2016-2033.....	14
Table A-1. Key Dates Projected for the Social Security Trust Funds as Shown Under the Intermediate Assumptions in Trustees Reports from 1983 to 2016.....	17

Appendixes

Appendix. Projected Trust Fund Dates, 1983–2016.....	17
--	----

Contacts

Author Contact Information	18
----------------------------------	----

Introduction

The Social Security program pays benefits to retired or disabled workers and their family members, and to the family members of deceased workers.¹ As of May 2016, there were 60.5 million Social Security beneficiaries. Approximately 67% of those beneficiaries were retired workers and 15% were disabled workers. The remaining beneficiaries were the survivors of deceased insured workers or the spouses and children of retired or disabled workers.²

Social Security is financed primarily by payroll taxes paid by covered workers and their employers. The program is also credited with federal income taxes paid by some beneficiaries on a portion of their benefits, reimbursements from the General Fund of the Treasury for various purposes, and interest income from investments held by the Social Security trust funds. Social Security tax revenues are invested in U.S. government securities (special issues) held by the trust funds, and these securities earn interest. The tax revenues exchanged for the U.S. government securities are deposited into the General Fund of the Treasury and are indistinguishable from revenues in the General Fund that come from other sources. Because the assets held by the trust funds are U.S. government securities, the trust fund balance represents the amount of money owed to the Social Security trust funds by the General Fund of the Treasury. Funds needed to pay Social Security benefits and administrative expenses come from the redemption or sale of U.S. government securities held by the trust funds.³

The Secretary of the Treasury (the Managing Trustee of the Social Security trust funds) is required by law to invest Social Security revenues in securities backed by the U.S. government.⁴ The purchase of U.S. government securities allows any surplus Social Security revenues to be used by the federal government for other (non-Social Security) spending needs at the time. This trust fund financing mechanism allows the General Fund of the Treasury to borrow from the Social Security trust funds. In turn, the General Fund pays back the trust funds (with interest) when the trust funds redeem the securities. The process of investing Social Security revenues in securities and redeeming the securities as needed to pay benefits is ongoing.

The Social Security trust funds are both designated accounts within the U.S. Treasury and the accumulated holdings of special U.S. government obligations. Both represent the funds designated to pay current and future Social Security benefits.

How the Social Security Program Is Financed

The Social Security program is financed primarily by revenues from Federal Insurance Contributions Act (FICA) taxes and Self-Employment Contributions Act (SECA) taxes. FICA taxes are paid by both employers and employees, but it is employers who remit the taxes to the U.S. Treasury. Employers remit FICA taxes on a regular basis throughout the year (e.g., weekly,

¹ A person may receive retired-worker benefits and continue to have earnings from work. If a person is below the full retirement age and has earnings above a specified amount, benefits are withheld in part or in full under the Retirement Earnings Test. For more information, see Social Security Administration (SSA), *Social Security: How Work Affects Your Benefits*, Publication No. 05-10069, January 2016, at <https://www.ssa.gov/pubs/EN-05-10069.pdf>.

² SSA, *Monthly Statistical Snapshot, May 2016*, Table 2. The latest edition of the *Monthly Statistical Snapshot* is available at http://www.ssa.gov/policy/docs/quickfacts/stat_snapshot/index.html.

³ SSA, *Trust Fund FAQs*, at <http://www.socialsecurity.gov/OACT/ProgData/fundFAQ.html>.

⁴ Social Security Act, Title II, §201(d) [42 U.S.C. §401(d)]. For more information, see SSA, Office of the Chief Actuary, Actuarial Note Number 142, *Social Security Trust Fund Investment Policies and Practices*, by Jeffrey L. Kunkel, January 1999, at <http://www.ssa.gov/OACT/NOTES/n1990s.html>.

monthly, quarterly or annually), depending on the employer's level of total employment taxes (including FICA and federal personal income tax withholding). The FICA tax rate of 7.65% each for employers and employees has two components: 6.2% for Social Security and 1.45% for Medicare Hospital Insurance. The SECA tax rate is 15.3% for self-employed individuals, with 12.4% for Social Security and 2.9% for Medicare Hospital Insurance. The respective Social Security contribution rates are levied on covered wages and net self-employment income up to \$118,500 in 2016.⁵ Self-employed individuals may deduct one-half of the SECA taxes for federal income tax purposes.⁶ SECA taxes are normally paid once a year as part of filing an annual individual income tax return. In 2015, Social Security payroll taxes totaled \$794.9 billion and accounted for 86% of the program's total income.⁷

In addition to payroll taxes, the Social Security program receives income from other sources. First, certain Social Security beneficiaries must include a portion of their Social Security benefits in taxable income for the federal income tax, and the Social Security program receives a portion of those taxes.⁸ In 2015, revenue from the taxation of benefits totaled \$31.6 billion, accounting for 3% of the program's total income. Second, the program receives reimbursements from the General Fund of the Treasury for a variety of purposes.⁹ General Fund reimbursements totaled \$0.3 billion, accounting for 0.03% of the program's total income.¹⁰ Finally, the Social Security program receives interest income from the U.S. Treasury on its investments in special U.S. government obligations. Interest income totaled \$93.3 billion, accounting for 10% of the program's total income.¹¹

The Internal Revenue Service (IRS) processes the tax returns and tax payments for federal employment taxes and federal individual income taxes. All of the tax payments are deposited in the U.S. Treasury along with all other receipts from the public for the federal government.

⁵ The limit on wages and net self-employment income subject to the Social Security payroll tax (the taxable wage base) is adjusted annually based on average wage growth if a Social Security cost-of-living adjustment (COLA) is payable. For more information on the COLA, see CRS Report 94-803, *Social Security: Cost-of-Living Adjustments*. The Medicare Hospital Insurance component of the FICA/SECA tax is levied on total earnings. In addition, the Patient Protection and Affordable Care Act (ACA; P.L. 111-148, as amended) imposes an additional 0.9% tax on high-income workers with wages and self-employment income over \$200,000 for single filers and \$250,000 for joint filers effective for taxable years beginning after December 31, 2012. For more information on Medicare, see CRS Report R43122, *Medicare Financial Status: In Brief*.

⁶ Self-employed individuals are required to pay Social Security payroll taxes if they have annual net earnings of \$400 or more. Only 92.35% of net self-employment income (up to the annual limit) is taxable.

⁷ SSA, Office of the Chief Actuary, *Financial Data For A Selected Time Period*, at <https://www.ssa.gov/OACT/ProgData/allOps.html>.

⁸ The taxes associated with including Social Security benefits in federal taxable income go to the Social Security trust funds and Medicare's Hospital Insurance trust fund. For more information, see CRS Report RL32552, *Social Security: Calculation and History of Taxing Benefits*.

⁹ The Social Security trust funds receive reimbursements from the General Fund for (1) the cost of noncontributory wage credits for military service before 1957; (2) the cost in 1971-1982 of deemed wage credits for military service performed after 1956; (3) the cost of benefits to certain uninsured persons who attained the age of 72 before 1968; (4) the cost of payroll tax credits provided to employees in 1984 and self-employed persons in 1984-89 by P.L. 98-21; (5) the cost in 2009-2013 of excluding certain self-employment earnings from SECA taxes under P.L. 110-246; and (6) payroll tax revenue forgone under the provisions of P.L. 111-147, P.L. 111-312, P.L. 112-78, and P.L. 112-96. See SSA, Office of the Chief Actuary, *Trust Fund Data*, at <http://www.socialsecurity.gov/OACT/STATS/table4a3.html>.

¹⁰ The total also includes a small amount of gifts to the trust funds.

¹¹ SSA, Office of the Chief Actuary, *Financial Data For A Selected Time Period*, at <https://www.ssa.gov/OACT/ProgData/allOps.html>.

The Social Security Trust Funds as Designated Accounts

Within the U.S. Treasury, there are numerous accounts established for internal accounting purposes. Although all of the monies within the U.S. Treasury are federal monies, the designation of an account as a trust fund allows the government to track revenues dedicated for specific purposes (as well as expenditures). In addition, the government can affect the level of revenues and expenditures associated with a trust fund through changes in the law.¹²

Social Security program income and outgo are accounted for in two separate trust funds authorized under Title II of the Social Security Act: (1) the Federal Old-Age and Survivors Insurance (OASI) Trust Fund and (2) the Federal Disability Insurance (DI) Trust Fund.¹³ Under current law, the two trust funds are legally distinct and do not have authority to borrow from each other. This is important given projections showing that the asset reserves held by the OASI fund will be depleted in 2035, whereas the asset reserves held by the DI fund will be depleted in 2023. Following the depletion of trust fund reserves (2023 for DI and 2035 for OASI), continuing income is projected to cover 89% of DI scheduled benefits and 77% of OASI scheduled benefits. In the past, Congress has authorized temporary interfund borrowing and payroll tax reallocations between OASI and DI to address funding imbalances. This CRS report discusses the operations of the OASI and DI trust funds on a combined basis, referring to them collectively as the *Social Security trust funds*. On a combined basis, the trust funds are projected to remain solvent until 2034, at which point continuing income is projected to cover 79% of program costs. (For a discussion of the status of the DI trust fund, see CRS Report R43318, *The Social Security Disability Insurance (DI) Trust Fund: Background and Current Status*.)

Social Security Trust Fund Revenues

The Social Security trust funds receive a credit equal to the Social Security payroll taxes deposited in the U.S. Treasury by the IRS.¹⁴ The payroll taxes are allocated between the OASI and DI trust funds based on a proportion specified by law.¹⁵ A provision included in the Bipartisan Budget Act of 2015 (P.L. 114-74) temporarily directs a larger share of total payroll tax revenues to the DI fund. For 2016 to 2018, the 12.4% payroll tax rate is allocated as follows: 10.03% for the OASI fund and 2.37% for the DI fund. Beginning in 2019, the allocation reverts back to 10.6% for the OASI fund and 1.8% for the DI fund.¹⁶

¹² For more information, see CRS Report R41328, *Federal Trust Funds and the Budget*.

¹³ Social Security Act, Title II, §201 [42 U.S.C. §401].

¹⁴ In addition, a portion of the federal income taxes paid on Social Security benefits, reimbursements from the General Fund, and the interest income on Social Security trust fund investments are credited to the Social Security trust funds.

¹⁵ Social Security Act, Title II, §201(b) [42 U.S.C. §401(b)]. See SSA, Office of the Chief Actuary, *Social Security Tax Rates*, at <https://www.ssa.gov/OACT/ProgData/oasdiRates.html>.

¹⁶ Before the Bipartisan Budget Act of 2015, the share of the payroll tax allocated to the DI fund was last changed (to 1.8%) in 2000, under a reallocation schedule established under the Social Security Domestic Employment Reform Act of 1994 (P.L. 103-387). For more information on past legislative changes to the allocation of payroll taxes between the OASI and DI trust funds, see CRS Report R43318, *The Social Security Disability Insurance (DI) Trust Fund: Background and Current Status*.

Social Security Trust Fund Costs

The U.S. Treasury makes Social Security benefit payments to individuals on a monthly basis, as directed by the Social Security Administration (SSA) as to whom to pay and the amount of the payment. When benefit payments are made by the U.S. Treasury, the Social Security trust funds are debited for the payments. Periodically, the Social Security trust funds are also debited for the administrative costs of the Social Security program. These administrative costs are incurred by several government agencies, including SSA, the U.S. Treasury, and the IRS.

Social Security Trust Fund Operations

The annual revenues to the Social Security trust funds are used to pay current Social Security benefits and administrative expenses. If, in any year, revenues are greater than costs, the surplus Social Security revenues in the U.S. Treasury are available for spending by the federal government on other (non-Social Security) spending needs at the time. If, in any year, costs are greater than revenues, the cash flow deficit is offset by selling some of the accumulated holdings of the trust funds (U.S. government securities) to help pay benefits and administrative expenses.

There are two measures of Social Security trust fund operations: the annual cash flow operations and the accumulated holdings (or trust fund balance).¹⁷ The annual cash flow operations of the Social Security trust funds are a measure of current revenues and current costs. The cash flow operations are positive when current revenues exceed costs (a cash flow surplus) and negative when current costs exceed revenues (a cash flow deficit). In years with cash flow deficits, the Social Security program (unlike other federal programs that operate without a trust fund) may use the accumulated holdings of the Social Security trust funds from prior years to help pay benefits and administrative expenses.¹⁸

Although Social Security is a pay-as-you-go system, meaning that current revenues are used to pay current costs, changes made to the Social Security program in 1983 began a sustained period of annual cash flow surpluses through 2009.¹⁹ Since 2010, however, Social Security has had annual cash flow deficits (program costs have exceeded tax revenues). The 2016 annual report of the Social Security Board of Trustees projects that, under their intermediate assumptions, annual cash flow deficits will continue throughout the 75-year projection period (2016-2090).²⁰

¹⁷ The accumulated holdings of the Social Security trust funds in U.S. government obligations are also referred to as the Social Security trust fund balance.

¹⁸ Certain government projects may be given “budget authority until expended,” which allows the authority to spend funds on the project to be carried over each year until all of the authority to spend funds has been exhausted.

¹⁹ The Social Security Amendments of 1983 (P.L. 98-21) made a number of program changes, including the coverage of federal workers, an increase in the full retirement age, and the taxation of Social Security benefits. For more information on the 1983 amendments, see CRS Report RL30920, *Social Security: Major Decisions in the House and Senate Since 1935*.

²⁰ The Social Security Board of Trustees is composed of three officers of the President’s Cabinet (the Secretary of the Treasury, the Secretary of Labor, and the Secretary of Health and Human Services); the Commissioner of Social Security; and two public representatives who are appointed by the President and subject to confirmation by the Senate. (The two public trustee positions are currently vacant.) The Board of Trustees issues an annual report to Congress on the financial status of the Social Security trust funds. The trustees make three sets of projections based on low-cost, intermediate, and high-cost assumptions reflecting the uncertainty surrounding projections for a 75-year period. The trust fund projections cited in this CRS report are based on the intermediate (or “best estimate”) assumptions of the *2016 Annual Report of the Board of Trustees of the Federal Old-Age and Survivors Insurance and Federal Disability Insurance Trust Funds*, Washington, DC, June 22, 2016, at <https://www.ssa.gov/OACT/TR/2016/tr2016.pdf>. (Hereinafter cited as “2016 Annual Report.”)

At the end of 2015, the Social Security trust funds had accumulated holdings (asset reserves) of more than \$2.8 trillion. The 2016 annual report projects that the trust funds will have asset reserves (a positive balance) until 2034, meaning that Social Security benefits scheduled under current law can be paid in full and on time until then. This is the same year projected in last year's report.

In addition, the 2016 annual report shows the 75-year actuarial deficit for the Social Security trust funds. The actuarial deficit is the difference between the present discounted value of scheduled benefits and the present discounted value of future taxes plus asset reserves held by the trust funds. It can be viewed as the amount by which the payroll tax rate would have to be increased to support the level of benefits scheduled under current law throughout the 75-year projection period (or, roughly the amount by which the payroll tax rate would have to be increased for the trust funds to remain fully solvent throughout the 75-year period). The 2016 annual report projects that the 75-year actuarial deficit for the trust funds is equal to 2.66% of taxable payroll,²¹ a small decrease of 0.02 percentage point from last year's report.²² With respect to the change in the projected 75-year actuarial deficit, the trustees state,

A 0.06 percentage point increase in the OASDI actuarial deficit would have been expected if nothing had changed other than the one-year shift in the valuation period from 2015 through 2089 to 2016 through 2090. The effects of recently enacted legislation, updated demographic and economic data, and improved methodologies decrease the actuarial deficit by 0.08 percent of taxable payroll, causing the small net improvement in the actuarial balance.²³

As noted above, on a combined basis, the Social Security trust funds are projected to have asset reserves sufficient to pay full scheduled benefits until 2034. Separately, however, the OASI Trust Fund is projected to have sufficient asset reserves until 2035 (the same year projected in last year's report) and the DI Trust Fund is projected to have sufficient asset reserves until 2023 (seven years later than projected in last year's report). The improvement in the DI fund's outlook is attributed largely to a temporary (three-year) reallocation of the combined 12.4% Social Security payroll tax rate between the OASI and DI funds, as required under Section 833 of the Bipartisan Budget Act of 2015 (P.L. 114-74). Under this provision, the DI fund receives a larger share of total payroll tax revenues for calendar years 2016 through 2018.²⁴ With respect to the status of each of the trust funds (OASI and DI), the trustees state, "While legislation is needed to address all of Social Security's financial imbalances, the need remains most pressing with respect to the program's disability insurance component."²⁵

²¹ *Taxable payroll* refers to total earnings in the economy that are subject to Social Security payroll taxes (with some adjustments).

²² The Congressional Budget Office (CBO) projects that the trust funds will have asset reserves until 2029, and that the program's 75-year actuarial shortfall would be equal to 4.7% of taxable payroll. As CBO explains: "The larger shortfall projected by CBO primarily stems from differences in the projections of interest rates and taxable payroll. Differences in projections involving life expectancy, fertility, and growth in the consumer price index also contribute ..." See CBO, *The 2016 Long-Term Budget Outlook*, July 2016, p. 28.

²³ Social Security and Medicare Boards of Trustees, *Status of the Social Security and Medicare Programs: A Summary of the 2016 Annual Reports*, June 22, 2016, at <https://www.ssa.gov/OACT/TRSUM/tr16summary.pdf>. (Hereinafter cited as "Summary of the 2016 Annual Report.")

²⁴ The Bipartisan Budget Act of 2015 (P.L. 114-74) was signed into law on November 2, 2015. In July 2015, the trustees released the 2015 Annual Report in which they projected that the asset reserves held by the DI Trust Fund would be depleted by the end of calendar year 2016 (under the intermediate assumptions). If reserve depletion had occurred, Social Security would have been unable to pay disability benefits in full and on time from that point forward.

²⁵ Summary of the 2016 Annual Report.

Table 1 shows the annual cash flow operations of the Social Security trust funds (non-interest income, cost, and cash flow surplus/deficit) for the historical period 1957 to 2015.²⁶ From 1957 to 1983 (the last time Congress enacted major amendments to the program), the Social Security trust funds operated with cash flow deficits (cost exceeded non-interest income) in 19 of the 27 years. Since 1984, the trust funds have operated with cash flow deficits in 6 of the past 32 years (2010 to 2015).

Table 1. Operations of the Social Security Trust Funds, Historical Period 1957-2015
(\$ in billions)

Year	Non-Interest Income ^a	Cost	Cash Flow Surplus or Deficit (non-interest income minus cost)
1957	\$7.5	\$7.6	(\$0.1)
1958	8.5	8.9	(0.4)
1959	8.9	10.8	(1.9)
1960	11.8	11.8	0.0
1961	12.3	13.4	(1.1)
1962	13.1	15.2	(2.1)
1963	15.6	16.2	(0.6)
1964	16.9	17.0	(0.1)
1965	17.2	19.2	(2.0)
1966	22.7	20.9	1.8
1967	25.5	22.5	3.0
1968	27.5	26.0	1.5
1969	32.0	27.9	4.1
1970	35.2	33.1	2.1
1971	38.9	38.5	0.4
1972	43.4	43.3	0.1
1973	52.4	53.1	(0.7)
1974	59.4	60.6	(1.2)
1975	64.7	69.2	(4.5)
1976	72.3	78.2	(5.9)
1977	79.5	87.3	(7.8)
1978	89.6	96.0	(6.4)
1979	103.7	107.3	(3.6)
1980	117.4	123.5	(6.1)
1981	140.2	144.4	(4.2)

²⁶ The DI Trust Fund was created under the Social Security Act Amendments of 1956, and DI became effective on January 1, 1957. The historical table begins with 1957, the first year for which operations of the combined OASDI Trust Fund can be shown.

Year	Non-Interest Income ^a	Cost	Cash Flow Surplus or Deficit (non-interest income minus cost)
1982	146.5	160.1	(13.6)
1983	163.0	171.2	(8.2)
1984	183.2	180.4	2.8
1985	200.8	190.6	10.2
1986	212.9	201.5	11.4
1987	225.7	209.1	16.6
1988	255.3	222.5	32.8
1989	276.7	236.2	40.5
1990	298.2	253.1	45.1
1991	307.8	274.2	33.6
1992	317.2	291.9	25.3
1993	327.7	308.8	18.9
1994	350.0	323.0	27.0
1995	364.5	339.8	24.7
1996	385.8	353.6	32.2
1997	413.9	369.1	44.8
1998	439.9	382.3	57.6
1999	471.1	392.9	78.2
2000	503.9	415.1	88.8
2001	529.1	438.9	90.2
2002	546.7	461.7	85.0
2003	547.0	479.1	67.9
2004	568.7	501.6	67.1
2005	607.5	529.9	77.6
2006	642.5	555.4	87.1
2007	674.7	594.5	80.2
2008	689.0	625.1	63.9
2009	689.2	685.8	3.4
2010	663.6	712.5	(48.9)
2011	690.7	736.1	(45.4)
2012	731.1	785.8	(54.7)
2013	752.2	822.9	(70.7)
2014	786.1	859.2	(73.1)
2015	826.9	897.1	(70.2)

Source: Table prepared by the Congressional Research Service (CRS) from data provided in the 2016 Annual Report, Table VI.A3, pp. 162-163, at <https://www.ssa.gov/OACT/TR/2016/tr2016.pdf>.

- a. Non-interest income is equal to total income minus net interest. Stated another way, non-interest income includes net payroll tax contributions, reimbursements from the General Fund of the Treasury to the Social Security trust funds, and federal income tax revenues from the taxation of Social Security benefits.

Table 2 shows projected cash flow operations of the Social Security trust funds (non-interest income, cost, and cash flow deficits) for the 2016 to 2033 period, as projected by the trustees in the 2016 annual report (under the intermediate assumptions).

Table 2. Projected Operations of the Social Security Trust Funds, 2016-2033
(\$ in billions)

Year ^a	Non-Interest Income ^b	Cost	Cash Flow Deficit (non-interest income minus cost)
2016	\$855.8	\$928.9	(\$73.1)
2017	909.1	965.5	(56.4)
2018	965.4	1,032.5	(67.1)
2019	1,021.3	1,101.6	(80.3)
2020	1,078.7	1,174.5	(95.8)
2021	1,137.5	1,248.4	(110.9)
2022	1,196.8	1,330.5	(133.7)
2023	1,255.4	1,418.8	(163.4)
2024	1,317.8	1,512.2	(194.4)
2025	1,380.2	1,609.2	(229.0)
2026	1,442.8	1,700.3	(257.5)
2027	1,507.6	1,795.1	(287.5)
2028	1,574.2	1,892.2	(318.0)
2029	1,643.1	1,992.1	(349.0)
2030	1,714.7	2,094.8	(380.1)
2031	1,788.8	2,199.9	(411.1)
2032	1,865.8	2,307.8	(442.0)
2033	1,946.2	2,418.0	(471.8)

Source: Table prepared by CRS from data provided in Table VI.G8 (intermediate assumptions), Supplemental Single-Year Tables Consistent with the 2016 Annual Report, at <https://www.ssa.gov/OACT/TR/2016/lr6g8.html>.

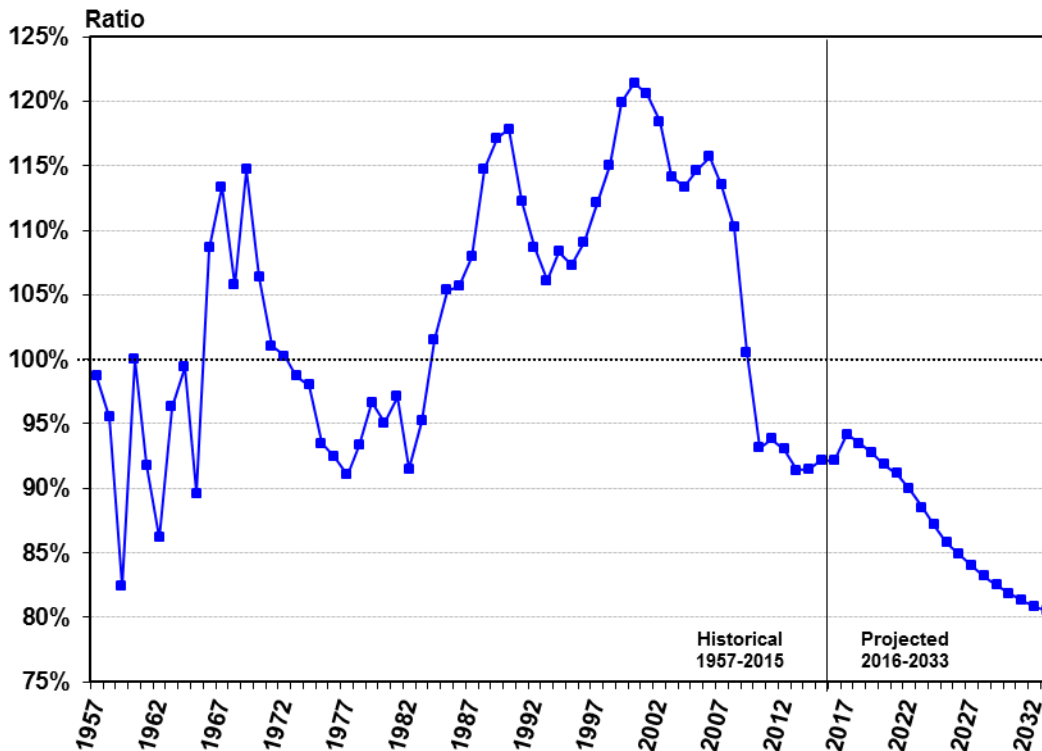
- a. Projections for years after 2033 are not shown because the asset reserves held by the Social Security trust funds are projected to be depleted in 2034 under the intermediate assumptions.
- b. Non-interest income is equal to total income minus interest income.

One way to measure the cash flow operations of the trust funds is to take the ratio of non-interest income to cost for each year. A ratio greater than 100% indicates positive cash flow (a cash flow surplus); a ratio less than 100% indicates negative cash flow (a cash flow deficit). **Figure 1** shows the ratio of current non-interest income to current cost for the Social Security trust funds each year over the historical period 1957 to 2015 and over the 2016 to 2033 period, as projected by the trustees in the 2016 annual report (under the intermediate assumptions).²⁷

²⁷ 2016 Annual Report, Table VI.A3, pp. 162-163, at <https://www.ssa.gov/OACT/TR/2016/tr2016.pdf>; and Table (continued...)

As shown in the figure, in 2009, non-interest income of \$689.2 billion divided by a cost of \$685.8 billion results in a ratio just over 100% (100.5%), indicating a cash flow surplus for the Social Security trust funds that year. By comparison, in 2015, non-interest income of \$826.9 billion divided by a cost of \$897.1 billion results in a ratio of 92.2%, indicating a cash flow deficit. In the 2016 annual report, the Social Security trustees project that the ratio of current non-interest income to current cost will remain below 100% for the 75-year projection period (2016-2090), with the gap between non-interest income and cost increasing over time (under the intermediate assumptions).

Figure I. Ratio of Current Non-Interest Income to Cost for the Social Security Trust Funds, 1957-2033



Source: Figure prepared by CRS from data provided in the 2016 Annual Report, Table VI.A3, pp. 162-163, at <https://www.ssa.gov/OACT/TR/2016/tr2016.pdf>; and Table VI.G8 (intermediate assumptions), Supplemental Single-Year Tables Consistent with the 2016 Annual Report, at <https://www.ssa.gov/OACT/TR/2016/lr6g8.html>.

Notes: Non-interest income excludes interest on accumulated holdings of U.S. government obligations. A ratio above 100% indicates a cash flow surplus for the year. A ratio below 100% indicates a cash flow deficit.

When the Social Security trust funds operate with annual cash flow deficits, the U.S. Treasury can continue to pay benefits scheduled under current law as long as the accumulated balance in the trust funds is sufficient to cover the costs. This is because the Social Security program has budget authority to pay benefits in full and on time as long as there is an adequate balance in the Social

(...continued)

VI.G8 (intermediate assumptions), Supplemental Single-Year Tables Consistent with the 2016 Annual Report, at <https://www.ssa.gov/OACT/TR/2016/lr6g8.html>.

Security trust funds (the designated accounts). When current Social Security revenues are not sufficient to pay benefits, however, the U.S. government must raise the funds necessary to honor the redemption of U.S. government obligations held by the Social Security trust funds as they are needed to pay benefits. If there are no surplus governmental receipts, the U.S. government may raise the necessary funds by increasing taxes or other income, reducing non-Social Security spending, borrowing from the public (i.e., replacing bonds held by the trust funds with bonds held by the public), or a combination of these measures.

Investment of the Social Security Trust Funds

The Secretary of the Treasury is required by law to invest Social Security revenues in securities backed by the U.S. government.²⁸ In addition, the Social Security trust funds receive interest on its holdings of special U.S. government obligations. Each U.S. government security issued by the U.S. Treasury for purchase by the Social Security trust funds must be a paper instrument in the form of a bond, note, or certificate of indebtedness.²⁹ Specifically, Section 201(d) of the Social Security Act states,

Each obligation issued for purchase by the Trust Funds under this subsection shall be evidenced by a paper instrument in the form of a bond, note, or certificate of indebtedness issued by the Secretary of the Treasury setting forth the principal amount, date of maturity, and interest rate of the obligation, and stating on its face that the obligation shall be incontestable in the hands of the Trust Fund to which it is issued, that the obligation is supported by the full faith and credit of the United States, and that the United States is pledged to the payment of the obligation with respect to both principal and interest. The Managing Trustee may purchase other interest-bearing obligations of the United States or obligations guaranteed as to both principal and interest by the United States, on original issue or at the market price, only where he determines that the purchase of such other obligations is in the public interest.

Any interest or proceeds from the sale of U.S. government securities held by the Social Security trust funds must be paid in the form of paper checks from the General Fund of the Treasury to the Social Security trust funds.³⁰ The interest rates paid on the securities issued to the Social Security trust funds are tied to market rates.³¹

For internal federal accounting purposes, when special U.S. government obligations are purchased by the Social Security trust funds, the U.S. Treasury is shifting surplus Social Security revenues from one government account (the Social Security trust funds) to another government account (the General Fund). The special U.S. government obligations are physical documents held by SSA, not the U.S. Treasury. The securities held by the Social Security trust funds are redeemed on a regular basis. These special U.S. government obligations, however, are not resources for the federal government because they represent both an asset and a liability for the government.³²

²⁸ Social Security Act, Title II, §201(d) [42 U.S.C. §401(d)]. For more information, see SSA, Office of the Chief Actuary, Actuarial Note Number 142, *Social Security Trust Fund Investment Policies and Practices*, by Jeffrey L. Kunkel, January 1999, at <http://www.ssa.gov/OACT/NOTES/n1990s.html>.

²⁹ Social Security Act, Title II, §201(d) [42 U.S.C. §401(d)].

³⁰ Social Security Act, Title II, §201(f) [42 U.S.C. §401(f)]. The funds are then used to purchase additional U.S. government securities credited to the Social Security trust funds.

³¹ For more information, see CRS Report RS20607, *Social Security: Trust Fund Investment Practices*.

³² For SSA's perspective on the U.S. government securities held by the trust funds, see SSA, *Trust Fund FAQs*, at <http://www.ssa.gov/oact/progdata/fundFAQ.html>.

Off-Budget Status of the Social Security Trust Funds

For federal budget purposes, *on-budget* status generally refers to programs that are included in the annual congressional budget process, whereas *off-budget* status generally refers to programs that are not included in the annual congressional budget process.

Social Security is a federal government program that, like the Postal Service, has had its receipts and (most) outlays designated by law as off-budget.³³ The off-budget designation, however, has no practical effect on program funding, spending, or operations. The annual congressional budget resolution, in its legislative language, separates the off-budget totals (receipts and outlays) from the on-budget totals (receipts and outlays). The report language accompanying the congressional budget resolution usually shows the unified budget totals (which combine the on- and off-budget amounts) as well as the separate on- and off-budget totals. The President’s budget tends to use the unified budget measures in discussing the budget totals. The President’s budget documents also include the totals for the on- and off-budget components, as required by law. The Congressional Budget Office uses the unified budget numbers in its analyses of the budget; it generally does not include on- and off-budget data in its regular annual reports.

The unified budget framework is important because it includes all federal receipts and outlays providing a more comprehensive picture of the size of the federal government, as well as the impact of the federal budget on the economy. In the unified budget, the Social Security program is a large source of both federal receipts (24% in FY2015) and federal outlays (24% in FY2015).³⁴ For purposes of the unified budget, the annual Social Security cash flow surplus or deficit is counted in determining the overall federal budget surplus or deficit.³⁵

The Social Security Trust Funds as Accumulated Holdings

The Social Security trust funds can be viewed as trust funds, similar to any private trust funds, that are to be used for paying current and future benefits (and administrative expenses). By law, the Social Security revenues credited to the trust funds (within the U.S. Treasury) are invested in non-marketable U.S. government obligations. These obligations are physical (paper) documents issued to the trust funds and held by SSA. When the obligations are redeemed, the U.S. Treasury must issue a check (a physical document) to the Social Security trust funds for the interest earned on the obligations.³⁶

Unlike a private trust that may hold a variety of assets and obligations of different borrowers, the Social Security trust funds can hold only U.S. government obligations. The sale of these obligations by the U.S. government to the Social Security trust funds is federal government borrowing (from itself) and counts against the federal debt limit. The requirement that the Social Security trust funds purchase U.S. government obligations serves several purposes, such as

³³ Although the Social Security program is designated as off-budget, SSA’s administrative funding is subject to an annual appropriated limit. For more information, see CRS Report R41716, *The Social Security Administration (SSA): Budget Request and Appropriations*.

³⁴ Percentages based on data from: U.S. Office of Management and Budget, *Historical Tables, Budget of the U.S. Government, Fiscal Year 2017*, Tables 2.1, 2.4, 6.1 and 13.1.

³⁵ For related information, see David Pattison, “Social Security Trust Fund Cash Flows and Reserves,” *Social Security Bulletin*, vol. 75, no. 1 (February 2015), at <https://www.ssa.gov/policy/docs/ssb/v75n1/v75n1p1.html>.

³⁶ The funds are then used to purchase additional U.S. government securities credited to the Social Security trust funds.

- offering a mechanism for the Social Security program to recoup the surplus revenues loaned to the rest of the government;
- paying interest so that the loan of the surplus revenues does not lose value over time;
- ensuring that the Social Security trust funds (and not other government accounts) receives credit for the interest earnings;
- ensuring a level of return (interest) to the Social Security trust funds; and
- providing a means outside of the securities market for the U.S. government to borrow funds.

The accumulated holdings of the Social Security trust funds represent the sum of annual surplus Social Security revenues (for all past years) that were invested in U.S. government obligations, plus the interest earned on those obligations. As a result of surplus Social Security revenues from 1984 to 2009 and the interest income credited to the Social Security trust funds, the accumulated holdings of the Social Security trust funds totaled \$2.8 trillion at the end of calendar year 2015.³⁷ It is the accumulated holdings of the Social Security trust funds (or the trust fund balance) that many people refer to when discussing the Social Security trust funds. **Table 3** shows the accumulated holdings of the Social Security trust funds for the historical period 1957 to 2015. **Table 4** shows the projected accumulated holdings of the Social Security trust funds for the 2016 to 2033 period, as projected by the Social Security trustees in the 2016 annual report (under the intermediate assumptions). The Social Security trustees project that the level of accumulated trust fund holdings will continue to increase from 2016 through 2019, due to interest income to the trust funds. Under the current projections, the level of accumulated holdings will begin to decline in 2020, and the Social Security trust funds' asset reserves will be depleted in 2034.³⁸

The Social Security trustees project that, on average over the next 75 years (2016 to 2090), program costs will exceed income by an amount equal to 2.66% of taxable payroll (on average, costs are projected to exceed income by about 19%).³⁹ The gap between income and costs, however, is projected to increase over the 75-year period. For example, in 2035, the cost of the program is projected to exceed income by an amount equal to 3.28% of taxable payroll (costs are projected to exceed income by about 25%). By 2090, the cost of the program is projected to exceed income by an amount equal to 4.35% of taxable payroll (costs are projected to exceed income by about 33%).⁴⁰

For illustration purposes, the trustees project that the Social Security trust funds would remain solvent throughout the 75-year projection period if, for example,

³⁷ The Social Security trust funds also receive reimbursements from the General Fund of the Treasury for a variety of purposes. In 2011 and 2012, the trust funds received relatively large reimbursements from the General Fund (\$102.7 billion and \$114.3 billion, respectively). In those years, general revenues were credited to the trust funds to make up for forgone payroll tax revenues under a temporary two-percentage-point reduction in the payroll tax rate for employees.

³⁸ Under the intermediate assumptions of the 2016 Annual Report, the Social Security trustees project that program costs will exceed total income (tax revenues plus interest income) beginning in 2020. At that point, the combined trust fund balance will begin to be drawn down to help pay benefits and administrative expenses. The trustees project that the asset reserves (U.S. government securities) held by the trust funds will be depleted during calendar year 2034. Following the depletion of trust fund reserves, the program will continue to operate with incoming receipts.

³⁹ Program costs and income are evaluated as a percentage of taxable payroll because Social Security payroll taxes are the primary source of funding for the program.

⁴⁰ The 75-year "open group unfunded obligation" for Social Security is \$11.4 trillion (in present value terms).

- revenues were increased by an amount equivalent to an immediate and permanent payroll tax rate increase of 2.58 percentage points (from 12.40% to 14.98%; a relative increase of 21%),⁴¹
- benefits scheduled under current law were reduced by an amount equivalent to an immediate and permanent reduction of (1) about 16% if applied to all current and future beneficiaries, or (2) about 19% if applied only to those who become eligible for benefits in 2016 or later; or
- some combination of these approaches were adopted.⁴²

Table 3. Accumulated Holdings of the Social Security Trust Funds, Historical Period 1957-2015
(\$ in billions)

Year	Accumulated Holdings ^a	Year	Accumulated Holdings ^a
1957	\$23.0	1987	\$68.8
1958	23.2	1988	109.8
1959	22.0	1989	163.0
1960	22.6	1990	225.3
1961	22.2	1991	280.7
1962	20.7	1992	331.5
1963	20.7	1993	378.3
1964	21.2	1994	436.4
1965	19.8	1995	496.1
1966	22.3	1996	567.0
1967	26.3	1997	655.5
1968	28.7	1998	762.5
1969	34.2	1999	896.1
1970	38.1	2000	1,049.4
1971	40.4	2001	1,212.5
1972	42.8	2002	1,378.0
1973	44.4	2003	1,530.8
1974	45.9	2004	1,686.8
1975	44.3	2005	1,858.7

⁴¹ The Social Security trustees explain that the projected increase in the payroll tax rate needed for the trust funds to remain solvent throughout the 75-year projection period (2.58 percentage points) differs from the projected 75-year actuarial deficit (2.66% of taxable payroll) for two reasons. The trustees state on page 5 of the 2016 Annual Report: “First, the necessary tax rate is the rate required to maintain solvency throughout the period that does not result in any trust fund reserve at the end of the period, whereas the actuarial deficit incorporates an ending trust fund reserve equal to 1 year’s cost. Second, the necessary tax rate reflects a behavioral response to tax rate changes, whereas the actuarial deficit does not. In particular, the calculation of the necessary tax rate assumes that an increase in payroll taxes results in a small shift of wages and salaries to forms of employee compensation that are not subject to the payroll tax.”

⁴² 2016 Annual Report, p. 5.

Year	Accumulated Holdings ^a	Year	Accumulated Holdings ^a
1976	41.1	2006	2,048.1
1977	35.9	2007	2,238.5
1978	31.7	2008	2,418.7
1979	30.3	2009	2,540.3
1980	26.5	2010	2,609.0
1981	24.5	2011	2,677.9
1982	24.8	2012	2,732.3
1983	24.9	2013	2,764.4
1984	31.1	2014	2,789.5
1985	42.2	2015	2,812.5
1986	46.9		

Source: Table prepared by CRS from data provided in the 2016 Annual Report, Table VI.A3, pp. 162-163 (the full report is at <https://www.ssa.gov/OACT/TR/2016/tr2016.pdf>). Accumulated holdings are end-of-year totals.

a. The accumulated holdings of the Social Security trust funds are also referred to as the trust fund balance.

Table 4. Projected Accumulated Holdings of the Social Security Trust Funds, 2016-2033

(\$ in billions)

Year ^a	Accumulated Holdings ^b	Year ^a	Accumulated Holdings ^b
2016	\$2,828.2	2025	\$2,526.7
2017	2,859.3	2026	2,365.4
2018	2,881.5	2027	2,174.9
2019	2,892.2	2028	1,952.3
2020	2,889.0	2029	1,694.1
2021	2,871.2	2030	1,397.0
2022	2,831.1	2031	1,052.2
2023	2,762.1	2032	657.3
2024	2,662.2	2033	210.7

Source: Table prepared by CRS from data provided in Table VI.G8 (intermediate assumptions), Supplemental Single-Year Tables Consistent with the 2016 Annual Report, at <https://www.ssa.gov/OACT/TR/2016/lr6g8.html>. Accumulated holdings are end-of-year totals.

a. Projections for years after 2033 are not shown because the asset reserves held by the Social Security trust funds are projected to be depleted in 2034 under the intermediate assumptions.

b. The accumulated holdings of the Social Security trust funds are also referred to as the trust fund balance.

The Social Security Trust Funds and the Level of Federal Debt

As part of the annual congressional budget process, the level of federal debt (the federal debt limit) is established for the budget by Congress. The federal debt limit includes debt held by the public, as well as the internal debt of the U.S. government (i.e., debt held by government

accounts). Borrowing from the public and the investment of the Social Security trust funds in special U.S. government obligations both fall under the restrictions of the federal debt limit. This means that the balance of the Social Security trust funds has implications for the federal debt limit.⁴³

The Social Security Trust Funds and Benefit Payments

The accumulated holdings of the Social Security trust funds represent funds designated to pay current and future benefits. When current Social Security tax revenues fall below the level needed to pay benefits, however, these funds become available only as the federal government raises the resources needed to redeem the securities held by the trust funds. The securities are a promise by the federal government to raise the necessary funds.⁴⁴ In past years, when Social Security was operating with annual cash flow surpluses, Social Security's surplus revenues were invested in U.S. government securities and used at the time to pay for other federal government activities. Social Security's past surplus revenues, therefore, are not available to finance benefits *directly* when Social Security is operating with annual cash flow deficits, as it does today.⁴⁵ The securities held by the trust funds must be redeemed for Social Security benefits to be paid.

Stated another way, when Social Security is operating with a cash flow deficit, the program relies in part on the accumulated holdings of the trust funds to pay benefits and administrative expenses. Because the trust funds hold U.S. government securities that are redeemed with general revenues, there is increased reliance on the General Fund of the Treasury. With respect to reliance on the General Fund when Social Security is operating with a cash flow deficit, it is important to note that Social Security does not have authority to borrow from the General Fund. Social Security cannot simply draw upon general revenues to make up for any current funding shortfall. Rather, Social Security relies on revenues that were collected for the program in previous years and used by the federal government at the time for other (non-Social Security) spending needs, plus the interest earned on its trust fund investments. Social Security draws on its own previously collected tax revenues and interest income (accumulated trust fund holdings) when current Social Security tax revenues fall below current program expenditures.

As the trustees point out, over the program's 80-year history, Social Security has collected approximately \$19.0 trillion and paid out \$16.1 trillion, leaving asset reserves of more than \$2.8 trillion at the end of 2015.⁴⁶ The accumulated trust fund holdings of \$2.8 trillion represent the amount of money that the General Fund of the Treasury owes to the Social Security trust funds. The General Fund could be said to have fully paid back the Social Security trust funds if the trust fund balance were to reach zero (i.e., if all of the trust funds' asset reserves were depleted).

The trustees project that the asset reserves held by the Social Security trust funds will be depleted in 2034. At that point, the program will continue to operate with incoming receipts to the trust

⁴³ For a discussion of how reaching the debt limit potentially could affect Social Security trust fund investment practices and benefit payments, see CRS Report R41633, *Reaching the Debt Limit: Background and Potential Effects on Government Operations*.

⁴⁴ If there are no surplus governmental receipts, the U.S. government may raise the necessary funds by increasing taxes or other income, reducing non-Social Security spending, borrowing from the public (i.e., replacing bonds held by the trust funds with bonds held by the public), or a combination of these measures.

⁴⁵ Social Security has been operating with annual cash flow deficits since 2010, and the trustees project that cash flow deficits will continue each year throughout the 75-year projection period (2016-2090). (2016 Annual Report; intermediate assumptions.)

⁴⁶ Summary of the 2016 Annual Report.

funds. Incoming receipts are projected to be sufficient to pay about three-fourths of scheduled benefits through the end of the projection period in 2090 (under the intermediate assumptions of the 2016 annual report).⁴⁷ Title II of the Social Security Act, which governs the program, does not specify what would happen to the payment of benefits in the event that the trust funds' asset reserves are depleted and incoming receipts to the trust funds are not sufficient to pay scheduled benefits in full and on time. Two possible scenarios are (1) the payment of full monthly benefits on a delayed basis or (2) the payment of partial monthly benefits on time.⁴⁸

⁴⁷ Projections show that incoming receipts would be sufficient to pay 79% of scheduled benefits in 2034 and 74% of scheduled benefits in 2090. On a separate basis, the OASI Trust Fund is projected to be unable to pay scheduled benefits starting in 2035; the DI Trust Fund is projected to be unable to pay scheduled benefits starting in 2023. (2016 Annual Report, p. 12.)

⁴⁸ For more information, see CRS Report RL32822, *Social Security Reform: Legal Analysis of Social Security Benefit Entitlement Issues*.

Appendix. Projected Trust Fund Dates, 1983–2016

The following table shows the key dates projected for the Social Security trust funds by the Social Security Board of Trustees (based on their intermediate set of assumptions) in each of their annual reports from 1983 to 2016.

Table A-I. Key Dates Projected for the Social Security Trust Funds as Shown Under the Intermediate Assumptions in Trustees Reports from 1983 to 2016

Year of Report	Year of Reserve Depletion			First Year That Cost Exceeds Non-Interest Income			First Year That Cost Exceeds Total Income		
	OASI	DI	OASDI	OASI	DI	OASDI	OASI	DI	OASDI
Intermediate II-B Projections ^a									
1983	b	b	b	c	c	2021	c	c	2047
1984	b	2050	b	2021	2012	2021	2045	2038	2044
1985	2050	2034	2049	2019	2010	2019	2032	2020	2032
1986	2054	2026	2051	2020	2009	2019	2035	2017	2033
1987	2055	2023	2051	2020	2008	2019	2036	2013	2033
1988	2050	2027	2048	2019	2009	2019	2033	2016	2032
1989	2049	2025	2046	2019	2009	2018	2032	2014	2030
1990	2046	2020	2043	2019	2008	2017	2030	2011	2028
Intermediate Projections									
1991	2045	2015	2041	2018	1998	2017	2030	2011	2028
1992	2042	1997	2036	2018	1992	2016	2028	1992	2024
1993	2044	1995	2036	2019	1993	2017	2030	1993	2025
1994	2036	1995	2029	2016	1994	2013	2024	1994	2019
1995	2031	2016	2030	2014	2003	2013	2021	2007	2020
1996	2031	2015	2029	2014	2003	2012	2021	2007	2019
1997	2031	2015	2029	2014	2004	2012	2021	2007	2019
1998	2034	2019	2032	2015	2006	2013	2023	2009	2021
1999	2036	2020	2034	2015	2006	2014	2024	2009	2022
2000	2039	2023	2037	2016	2007	2015	2026	2012	2025
2001	2040	2026	2038	2016	2008	2016	2027	2015	2027
2002	2043	2028	2041	2018	2009	2017	2028	2018	2027
2003	2044	2028	2042	2018	2008	2018	2030	2018	2028
2004	2044	2029	2042	2018	2008	2018	2029	2017	2028
2005	2043	2027	2041	2018	2005	2017	2028	2014	2027
2006	2042	2025	2040	2018	2005	2017	2028	2013	2027
2007	2042	2026	2041	2018	2005	2017	2028	2013	2027
2008	2042	2025	2041	2018	2005	2017	2028	2012	2027

Year of Report	Year of Reserve Depletion			First Year That Cost Exceeds Non-Interest Income			First Year That Cost Exceeds Total Income		
	OASI	DI	OASDI	OASI	DI	OASDI	OASI	DI	OASDI
2009	2039	2020	2037	2017	2005	2016	2025	2009	2024
2010	2040	2018	2037	2018	2005	2015	2026	2009	2025
2011	2038	2018	2036	2017	2005	2010	2025	2009	2023
2012	2035	2016	2033	2010	2005	2010	2023	2009	2021
2013	2035	2016	2033	2010	2005	2010	2022	2009	2021
2014	2034	2016	2033	2010	2005	2010	2022	2009	2020
2015	2035	2016	2034	2010	2005	2010	2022	2009	2020
2016	2035	2023	2034	2010	2019	2010	2022	2019	2020

Source: CRS, based on data from the 1983 to 2016 Social Security trustees reports and information provided by SSA.

- a. From 1983 to 1990, two intermediate forecasts were prepared (II-A and II-B). The intermediate II-B forecast corresponds more closely to the intermediate forecast in subsequent years.
- b. Trust fund expected to remain solvent throughout the long-range projection period.
- c. Not available.

Author Contact Information

(name redacted)
 Analyst in Income Security
 [redacted]@crs.loc.gov7-....

(name redacted)
 Analyst in Social Policy
 [redacted]@crs.loc.gov...

Acknowledgments

This report was originally written by retired CRS analyst (name redacted)CRS analyst (name redacted) made additional contributions. All questions should be directed to the current authors.

EveryCRSReport.com

The Congressional Research Service (CRS) is a federal legislative branch agency, housed inside the Library of Congress, charged with providing the United States Congress non-partisan advice on issues that may come before Congress.

EveryCRSReport.com republishes CRS reports that are available to all Congressional staff. The reports are not classified, and Members of Congress routinely make individual reports available to the public.

Prior to our republication, we redacted names, phone numbers and email addresses of analysts who produced the reports. We also added this page to the report. We have not intentionally made any other changes to any report published on EveryCRSReport.com.

CRS reports, as a work of the United States government, are not subject to copyright protection in the United States. Any CRS report may be reproduced and distributed in its entirety without permission from CRS. However, as a CRS report may include copyrighted images or material from a third party, you may need to obtain permission of the copyright holder if you wish to copy or otherwise use copyrighted material.

Information in a CRS report should not be relied upon for purposes other than public understanding of information that has been provided by CRS to members of Congress in connection with CRS' institutional role.

EveryCRSReport.com is not a government website and is not affiliated with CRS. We do not claim copyright on any CRS report we have republished.