



**Congressional
Research Service**

Informing the legislative debate since 1914

Tax Deductions for Individuals: A Summary

name redacted

Analyst in Public Finance

February 18, 2015

Congressional Research Service

7-....

www.crs.gov

R42872

Summary

Every tax filer has the option to claim deductions when filing their income tax return. Deductions serve four main purposes in the tax code: (1) to account for large, unusual, and necessary personal expenditures, such as extraordinary medical expenses; (2) to encourage certain types of activities, such as homeownership and charitable contributions; (3) to ease the burden of taxes paid to state and local governments; and (4) to adjust for the expenses of earning income, such as unreimbursed employee expenses.

Some tax deductions can be taken by individuals even if they do not itemize. These deductions are commonly referred to as above-the-line deductions, because they reduce a tax filer's adjusted gross income (AGI, or the line). In contrast, itemized and standard deductions are referred to as below-the-line deductions, because they are applied after AGI is calculated to arrive at taxable income.

Tax filers have the option to claim either a standard deduction or to itemize certain deductions. The standard deduction, which is based on filing status, is, among other things, intended to reduce the complexity of paying taxes, as it requires no additional documentation. Alternatively, tax filers claiming itemized deductions must list each item separately on their tax return and be able to provide documentation that the expenditures being deducted have been made. Only tax filers with deductions that can be itemized in excess of the standard deduction find it worthwhile to itemize. Whichever deduction the tax filer claims—standard or itemized—the amount is subtracted from AGI.

Deductions differ from other tax provisions that can reduce a tax filer's final tax liability. Deductions reduce final tax liability by a percentage of the amount deducted, because deductions are calculated before applicable marginal income tax rates. In contrast, tax credits generally reduce an individual's tax liability directly, on a dollar-for-dollar basis, because they are incorporated into tax calculations after marginal tax rates are applied.

Some deductions can only be claimed if they meet or exceed minimum threshold amounts (usually a certain percentage of AGI) in order to simplify tax administration and compliance. In addition, some deductions are subject to a cap (also known as a *ceiling*) in benefits or eligibility. Caps are meant to reduce the extent that tax provisions can distort economic behavior, limit revenue losses, or reduce the availability of the deduction to higher-income tax filers.

Because some tax filers and policy makers may not have detailed knowledge of tax deductions, this report first describes what they are, how they vary in their effects on reducing taxable income, and how they differ from other provisions (e.g., exclusions or credits). Next, a discussion concerning the rationale for deductions as part of the tax code is provided. Because some deductions are classified as tax expenditures, or losses in federal revenue, they might be of interest to Congress from a budgetary perspective. The final section of this report includes tables that summarize each individual tax deduction, under current law. Many of these deductions are part of the permanent income tax code. The Tax Increase Prevention Act of 2014 (P.L. 113-295) extended several temporary provisions through 2014 (for the 2015 tax filing season).

Contents

Calculating the Individual Income Tax 1

What Are Tax Deductions? 2

Above-Versus-Below-the-Line Deductions..... 3

Itemized Versus Standard Deductions 4

 Standard Deduction..... 4

 Itemized Deductions..... 5

 Pease Limit on Itemized Deductions for Higher-Income Tax Filers..... 6

Summary of Individual Tax Deductions..... 8

Figures

Figure 1. Computation of Federal Personal Income Tax Liability 2

Figure 2. Above- Versus Below-the-Line Deductions on the IRS Form 1040 3

Tables

Table 1. Summary of Above-the-Line, Tax Deductions for Individuals..... 1

Table 2. Summary of Below-the-Line, Itemized Tax Deductions for Individuals..... 8

Contacts

Author Contact Information 13

This report provides an overview of income tax deductions for individuals. A tax deduction reduces the amount of a tax filer's income that is subject to taxation, ultimately reducing the tax filer's tax liability. Every tax filer has the option to claim deductions when filing their income tax return. However, some tax filers and policy makers may not have detailed knowledge of tax deductions, including future changes in the requirements to claim certain deductions. In addition, tax deductions may be of interest to Congress from a budgetary perspective, as some deductions are classified as *tax expenditures*, and result in losses in federal revenue.

This report first describes what tax deductions are, how they vary in their effects on reducing taxable income, and how they differ from other provisions (e.g., exclusions or credits). Next, it discusses the rationale for deductions as part of the tax code. The final section includes tables that summarize each individual tax deduction, under current law.

This report focuses on the standard treatment of tax deductions for individuals under the individual income tax code. As such, the following are beyond the scope of this report:

- the different treatment of deductions under the alternative minimum tax for individuals,¹
- tax deductions for businesses under the individual income tax code,² and
- options for reforming itemized deductions.³

Calculating the Individual Income Tax

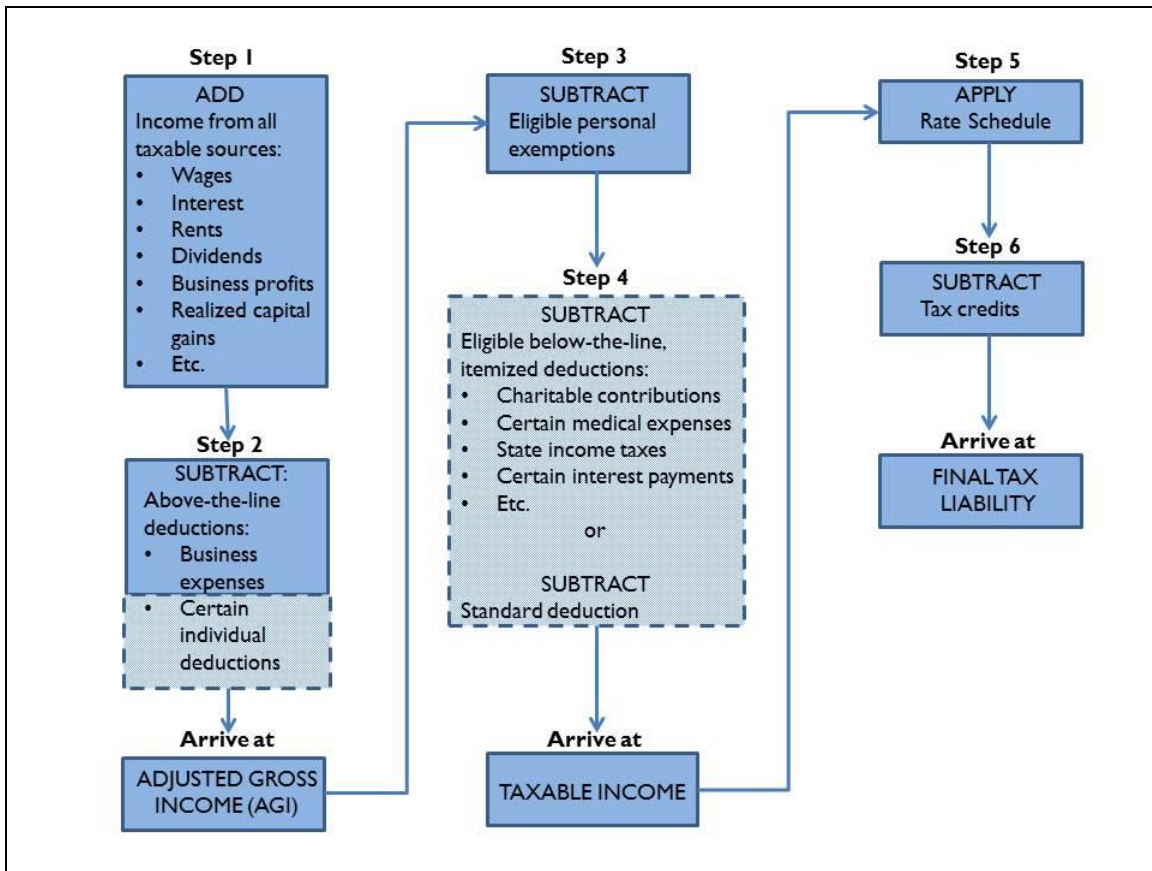
To understand what tax deductions are, it is helpful to first understand how a tax filer calculates individual income tax liability. **Figure 1** provides an overview of how a tax filer calculates his or her federal *tax liability*.⁴ To calculate taxes owed (tax liability), tax filers first add up all of their forms of income (see step 1 in **Figure 1**) to calculate their gross income. Next, the tax filer subtracts any *above-the-line* deductions to calculate their *adjusted gross income*, or AGI (step 2). AGI is often referred to as “the line.” Then, the tax filer subtracts *personal exemptions*, or fixed dollar amounts per spouse and dependent child (step 3). The tax filer then subtracts the greater of either the sum of all of their *below-the-line*, or *itemized deductions*, or the *standard deduction*, which is a fixed amount based on filing status, in order to arrive at taxable income (step 4). The marginal tax rates are applied to taxable income (step 5) to arrive at a preliminary tax liability. Finally, tax credits are subtracted from preliminary tax liability (step 6) to arrive at final tax liability. The provisions in **Figure 1** surrounded by dotted lines are covered in this report.

¹ See CRS Report RL30149, *The Alternative Minimum Tax for Individuals*, by (name redacted).

² Some of the deductions reported on the Internal Revenue Service Form 1040 relate to business expenses, as some business are organized as pass-through entities. Pass-through entities get their name from the fact that the business's income passes-through to the owner, as opposed to being claimed separately by the business. However, the tax treatment of business income through the individual tax code is beyond the scope of this report. For more information on pass-through entities, see CRS Report R40748, *Business Organizational Choices: Taxation and Responses to Legislative Changes*, by (name redacted), available upon request.

³ For example, see CRS Report R43079, *Restrictions on Itemized Tax Deductions: Policy Options and Analysis*, by (name redacted) and (name redacted); CRS Report R42435, *The Challenge of Individual Income Tax Reform: An Economic Analysis of Tax Base Broadening*, by (name redacted) and (name redacted); and CRS Report RL33755, *Federal Income Tax Treatment of the Family*, by (name redacted).

⁴ For a more detailed description of each of these tax terms, see CRS Report RL30110, *Federal Individual Income Tax Terms: An Explanation*, by (name redacted) and (name redacted). For a general explanation of the federal tax system, see CRS Report RL32808, *Overview of the Federal Tax System*, by (name redacted) and (name redacted).

Figure 1. Computation of Federal Personal Income Tax Liability

Source: Harvey S. Rosen, *Public Finance*, 7th ed. (New York, NY: McGraw-Hill Irwin, 2005), p. 360.

What Are Tax Deductions?

Simply stated, deductions reduce taxable income. Each deduction reduces tax liability by the amount of deduction times the tax filer's marginal tax rate. In contrast, a tax credit reduces tax liability on a dollar-for-dollar basis because it would be applied *after* the marginal tax rate schedule. An individual in a 35% tax bracket would receive a reduction in taxes of \$35 for each \$100 deduction while an individual in a 25% tax bracket would receive a reduction in taxes of \$25 for each \$100 deduction. Hence, the same deduction can be worth different amounts to different tax filers depending on their marginal tax bracket. The tax savings from deductions are generally equal to the tax filer's marginal tax rate times the amount of the deduction. So higher-income tax filers typically benefit more than lower-income tax filers from deductions.

Deductions serve four main purposes in the tax code.⁵ First, they can account for large, unusual, and necessary personal expenditures, such as the deduction for extraordinary medical expenses. Second, they are used to encourage certain types of activities, such as homeownership and charitable contributions. Third, they account for and ease the burden of paying for non-federal forms of taxes, such as state and local taxes. Fourth, deductions adjust for the expenses of earning income, such as deductions for work-related employee expenses.

⁵ Joseph A. Pechman, *Federal Tax Policy*, 3rd ed. (Washington, DC: Brookings Institution Press, 1977), pp. 85-88.

The following sections define each form of deduction and explain in greater detail how deductions are used in the calculation of an individual's tax liability.

Above-Versus-Below-the-Line Deductions

To arrive at final tax liability, all taxpayers may be able to claim above-the-line deductions whether they claim itemized deductions or the standard deduction. Each of these deductions has a specific line on the Form 1040 (e.g., line 34 for the deduction of student loan interest). **Figure 2** shows how tax deductions appear on the IRS Form 1040.

Figure 2. Above- Versus Below-the-Line Deductions on the IRS Form 1040

The diagram illustrates the structure of the 2014 IRS Form 1040, specifically focusing on the calculation of taxable income through deductions.

Adjusted Gross Income (AGI) Section (Page 1):

- Adjusted Gross Income:** This is the starting point for the calculation.
- Above-the-line deductions:** These are deductions that can be taken regardless of whether the taxpayer itemizes. They are listed on lines 23 through 35:
 - 23 Educator expenses
 - 24 Certain business expenses of reservists, performing artists, and fee-basis government officials. Attach Form 2106 or 2106-EZ
 - 25 Health savings account deduction. Attach Form 8889
 - 26 Moving expenses. Attach Form 3903
 - 27 Deductible part of self-employment tax. Attach Schedule SE
 - 28 Self-employed SEP, SIMPLE, and qualified plans
 - 29 Self-employed health insurance deduction
 - 30 Penalty on early withdrawal of savings
 - 31a Alimony paid b Recipient's SSN
 - 32 IRA deduction
 - 33 Student loan interest deduction
 - 34 Tuition and fees. Attach Form 8917
 - 35 Domestic production activities deduction. Attach Form 8903
- The line (adjusted gross income):** Line 36 is the sum of lines 23 through 35, subtracted from line 22 (Total income). Line 37 is the resulting Adjusted Gross Income.

Tax and Credits Section (Page 2):

- Below-the-line deductions (total itemized deductions):** These are deductions that are only available if the taxpayer itemizes. They are listed on lines 40 through 55:
 - 40 Itemized deductions (from Schedule A) or your standard deduction (see left margin)
 - 41 Subtract line 40 from line 38
 - 42 Exemptions. If line 38 is \$12,529 or less, multiply \$3,900 by the number on line 6d. Otherwise, see instructions
 - 43 Taxable income. Subtract line 42 from line 41. If line 42 is more than line 41, enter -0-
 - 44 Tax (see instructions). Check if any from: a Form(s) 8814 b Form 4972 c
 - 45 Alternative minimum tax (see instructions). Attach Form 6251
 - 46 Excess advance premium tax credit repayment. Attach Form 8962
 - 47 Add lines 44, 45, and 46
 - 48 Foreign tax credit. Attach Form 1116 if required
 - 49 Credit for child and dependent care expenses. Attach Form 2441
 - 50 Education credits from Form 8863, line 19
 - 51 Retirement savings contributions credit. Attach Form 8880
 - 52 Child tax credit. Attach Schedule 8812, if required
 - 53 Residential energy credits. Attach Form 5695
 - 54 Other credits from Form: a 3800 b 8801 c
 - 55 Add lines 48 through 54. These are your total credits
 - 56 Subtract line 55 from line 47. If line 55 is more than line 47, enter -0-
- Standard deduction amounts:** These are provided for taxpayers who do not itemize. They are listed on the left side of the form:
 - Standard Deduction for:
 - People who check any box on line 39a or 39b or who can be claimed as a dependent, see instructions.
 - All others:
 - Single or Married filing separately, \$6,200
 - Married filing jointly or Qualifying widower, \$12,400
 - Head of household, \$9,100

Source: Internal Revenue Service, 2014 Form 1040, at <http://www.irs.gov/pub/irs-pdf/f1040.pdf>.

These deductions are commonly referred to as *above-the-line* deductions, because they reduce a tax filer's AGI (the line). Above-the-line deductions are sometimes also called *adjustments* to income, because they generally represent costs incurred to earn income. In contrast, itemized and standard deductions are sometimes referred to *below-the-line* deductions, because they are applied *after* AGI is calculated to arrive at taxable income.

Above-the-line deductions may provide additional benefits to some tax filers seeking to claim certain tax preferences. A number of tax provisions have a phaseout of benefits as income increases. The higher the AGI, the less likely the tax filer will be able to claim a larger value of the tax preference. Tax deductions that lower AGI increase the likelihood that the tax filer will be able to claim a larger value of the tax preference.

Itemized Versus Standard Deductions

As previously discussed, tax filers have the option to claim either a standard deduction or the sum of their itemized deductions. Whichever deduction the tax filer claims—standard or itemized—the deduction amount is subtracted from AGI to arrive at final tax liability.

Standard Deduction

The *standard deduction* is a fixed amount, based on filing status, available to all taxpayers. In contrast to those itemizing their deductions, tax filers do not have to provide additional documentation in order to claim the standard deduction.

The standard deduction was introduced into the federal tax code with the passage of the Individual Income Tax Act of 1944 (P.L. 78-315) primarily to simplify tax administration and compliance. At the time of passage, it was noted that taxpayers generally had little idea about what deductions were allowable and few taxpayers kept accurate records. Thus, the enactment of the standard deduction reduced excessive unsupported claims of deductions, although at the same time it permitted many taxpayers to take a deduction in excess of what they would have been allowed if they had been required to itemize their deductions.

Today it is also viewed as performing a social welfare purpose. The social welfare purpose of the standard deduction was introduced with the minimum standard deduction in the Revenue Act of 1964 (P.L. 88-272). Under this minimum standard deduction provision, a taxpayer was assured a minimum amount of deductions from his or her income. The personal exemptions combined with the standard deduction amount are designed to remove low-income households from the tax rolls.

The calculation of the standard deduction has changed over time. In 1944, it was equal to 10% of AGI, up to a maximum of \$1,000. In 1964, a minimum standard deduction was introduced as a fixed value of \$200 plus \$100 for each exemption with a ceiling of \$1,000 if married filing jointly.⁶ The value of the standard deduction, including both the percent of AGI and the maximum value, was increased multiple times from 1969 to 1975. The minimum standard deduction and the deduction were merged in 1977 into a flat standard deduction of \$2,200 (single) and \$3,200 (married filing jointly).⁷ The Economic Recovery Tax Act of 1981 (P.L. 97-34) indexed standard deduction amounts for inflation, beginning in 1985.⁸ The standard deduction has been increased over time, such as with the Tax Reform Act of 1986 (TRA86; P.L. 99-514).

The Economic Growth and Tax Relief Reconciliation Act of 2001 (EGTRRA; P.L. 107-16) phased out part of the so-called marriage penalty associated with the federal tax code, where the standard deduction for joint filers was less than twice the single filer amount. EGTRRA increased the deduction for joint filers to 200% of singles. This provision, most recently extended by Tax Relief, Unemployment Insurance Reauthorization and Job Creation Act of 2010 (P.L. 111-312), expired in 2012. Under current law, the standard deduction for married couples filing jointly will be equal to 167% of upper limit for singles for the 2013 tax year and beyond.⁹

⁶ CRS Report 80-31, *Historical Summary of Selected Features of the Individual Income Tax*, by George J. Leibowitz and (name redacted). (This archived report, last updated by Cheryl Savage Newton in 1980, is available upon request.)

⁷ Ibid.

⁸ Jon Bakija and Eugene Steuerle, "Individual Income Taxation Since 1948," *National Tax Journal*, vol. 44, no. 4 (December 1991), p. 453.

⁹ See CRS Report R42485, *An Overview of Tax Provisions Expiring in 2012*, by (name redacted), available upon request.

The standard deduction amount varies depending on the filing status of the tax unit (i.e., single, married filing jointly, married filing separately, or head of household), whether the tax filer is over the age of 65, and whether the tax filer is blind.

For the 2014 tax year (2015 filing season), the inflation-adjusted standard deductions are as follows:

- \$12,400 married filing jointly or surviving spouses,
- \$6,200 for single tax filers and married filing separately, and
- \$9,100 for tax filers who qualify as the head of a household.¹⁰

For the 2015 tax year (2016 filing season), the inflation-adjusted standard deductions are as follows:

- \$12,600 married filing jointly or surviving spouses,
- \$6,300 for single tax filers and married filing separately, and
- \$9,250 for tax filers who qualify as the head of a household.¹¹

In addition, there is a standard deduction available for an individual who can be claimed as a dependent on another person's tax return. For tax year 2014 (2015 filing season), the standard deduction for a dependent is generally limited to the greater of: (a) \$1,000 or (b) the sum of the individual's earned income for the year plus \$350 (but not more than the regular standard deduction amount of \$6,200 for single tax filers).¹²

The additional standard deductions for those aged 65 or older and those who are legally blind are increased by \$1,550 if single or head of household and \$1,200 if married filing jointly for tax year 2014 (2015 filing season).¹³ These increases apply per classification and are added above the base standard deduction amounts listed above. Thus, a 70-year-old blind and single tax filer would be eligible for a \$3,100 increase (\$1,550 for being 65 or older, and \$1,550 for being blind) in his or her standard deduction for tax year 2014. These amounts are adjusted annually for inflation.

Itemized Deductions

Alternatively, tax filers claiming *itemized deductions* must list each item separately on their tax return and be able to provide documentation (i.e., in the event of an IRS audit) that the expenditures have been made.

Tax filers have been able to itemize their deductions since the Revenue Act of 1913 (P.L. 63-16), which created the first permanent federal income tax. Deductions for interest paid or unexpected casualty losses were early provisions in the federal income tax code because many businesses were sole proprietorships (i.e., pass-through entities) where the owner was personally liable for

¹⁰ See Internal Revenue Service, *Internal Revenue Bulletin No. 2013-47*, November 18, 2013, at <http://www.irs.gov/pub/irs-irbs/irb13-47.pdf>.

¹¹ See Internal Revenue Service, *Internal Revenue Bulletin No. 2014-47*, November 17, 2014, at <http://www.irs.gov/pub/irs-drop/rp-14-61.pdf>.

¹² For tax year 2014 (2015 filing season), the standard deduction for a dependent is generally limited to the greater of: (a) \$1,050 or (b) the sum of the individual's earned income for the year plus \$350 (but not more than the regular standard deduction amount of \$6,200 for single tax filers).

¹³ For the 2015 tax year (2016 filing season), the additional standard deduction for the aged or the blind is \$1,250. The additional standard deduction amount is increased to \$1,550 if the individual is also unmarried and not surviving a spouse.

the costs of doing business. Itemized deductions have been reduced or limited in eligibility, most notably with TRA86. For example, TRA86 eliminated deductions for consumer interest and enacted more complex rules for deducting investment interest.¹⁴

Only individuals with aggregate itemized deductions greater than the standard deduction find it worthwhile to itemize. Itemized deductions are claimed on the IRS Schedule A form.¹⁵ Itemized deductions are allowed for a variety of purposes. A detailed summary of the requirements and limits for each of these provisions, and other itemized deductions, is included in **Table 2**, at the end of this report.

Some itemized deductions can only be claimed if they meet or exceed minimum threshold amounts (usually a certain percentage of AGI) in order to simplify tax administration and compliance. For example, a tax filer must meet a certain threshold (or a *floor*) to deduct a casualty, disaster, or theft loss.

Certain itemized deductions are treated as miscellaneous itemized deductions, which are allowed only to the extent that their total *exceeds* 2% of the individual tax filer's AGI. This floor makes it simpler for a tax filer to choose whether he or she would be better off itemizing the deductions or choosing to claim the standard deduction, and it helps to ensure that the IRS is only reviewing documentation of fewer, larger events rather than many, smaller events. Any restriction placed upon an itemized deduction generally applies *prior* to the 2% AGI floor.¹⁶ An example of an expense subject to the combined 2% of AGI floor for miscellaneous deductions is the 50% reduction for unreimbursed meals while traveling away from home on business.

In addition, some deductions are subject to a cap (also known as a *ceiling*) in benefits or eligibility. Caps are meant to reduce the extent that tax provisions can distort economic behavior, limit revenue losses, or reduce the availability of the deduction to higher-income tax filers. For example, the home mortgage interest itemized deduction is limited to mortgage debt in the amount of up to \$1 million for married couples filing jointly (\$500,000 for individuals or married filing separate).¹⁷ This ceiling is intended to limit incentives for higher-income tax filers to finance their home purchases with deductible interest.

Pease Limit on Itemized Deductions for Higher-Income Tax Filers

There is a limitation on the *value* of itemized deductions that certain, higher-income tax filers can claim. The limitation on itemized deductions was initially included in the Omnibus Budget Reconciliation Act of 1990 (P.L. 101-508), drafted by Representative Donald Pease of Ohio. Commonly referred to as “Pease” by tax analysts, it effectively increases taxes on high-income tax filers without explicitly increasing tax rates.

Pease's limitations are triggered by an AGI threshold.¹⁸ The number or total amount of itemized deductions claimed by a tax filer does *not* determine whether he or she is subject to Pease. Pease

¹⁴ See Sally Wallace, “Itemized Deductions,” in *Encyclopedia of Taxation and Tax Policy*, ed. Joseph J. Cordes, Robert D. Ebel, and (name redacted) (Washington, DC: Urban Institute Press, 2000), p. 215. For an explanation of reforms to particular itemized tax deductions in the Tax Reform Act of 1986, see U.S. Congress, Joint Committee on Taxation, *General Explanation of the Tax Reform Act of 1986*, committee print, 100th Cong., 1st sess., May 4, 1987, JCS-10-87 (Washington: GPO, 1987).

¹⁵ Internal Revenue Service, 2014 Schedule A (Form 1040), at <http://www.irs.gov/pub/irs-pdf/f1040sa.pdf>.

¹⁶ Internal Revenue Code (IRC) Section 162(a).

¹⁷ IRC §163(h).

¹⁸ *Ibid.*

affects tax filers above the inflation-adjusted AGI thresholds who itemize deductions. For these tax filers, the total of certain itemized deductions is reduced by 3% of the amount of AGI exceeding the threshold.¹⁹ The total reduction, however, cannot be greater than 80% of the deductions (and the tax filer always has the option of taking the standard deduction). Consequently, the effective marginal tax rate for these tax filers will be 3% higher than their statutory marginal tax rate.²⁰

Pease was in effect from 1991 to 2009, and was fully repealed from 2010 to 2012.²¹ The Economic Growth and Tax Relief Reconciliation Act of 2001 (P.L. 107-16) included the phased-in repeal of Pease between 2006 and 2009. Pease was scheduled to be reinstituted beginning with the 2011 tax year, but the reintroduction was postponed until the 2013 tax year by the Tax Relief, Unemployment Insurance Reauthorization, and Job Creation Act of 2010 (P.L. 111-312).

The American Taxpayer and Relief Act of 2012 (ATRA; P.L. 112-240) restored Pease for tax years 2013 and beyond.

For the 2014 tax year (2015 filing season), the Pease threshold amounts are adjusted to

- \$254,200, if single and not married;
- \$279,650, if head of household;
- \$305,050, if married filing jointly or a surviving spouse; or
- \$152,525, if married, filing separately.²²

For the 2015 tax year (2016 filing season), the Pease threshold amounts are adjusted to

- \$258,250, if single and not married;
- \$284,050, if head of household;

¹⁹ The deductions not subject to the Pease limitation are medical and dental expenses, investment interest, qualified charitable contributions, and casualty and theft losses.

²⁰ The statutory tax rate is the marginal tax rate a tax filer faces based on their AGI. In contrast, the effective marginal tax rate is the net rate a taxpayer pays on an increment of income that includes all forms of taxes, including the different rate for itemized deductions under Pease. The average effective tax rate is calculated by dividing total tax liability by total gross income.

²¹ For more information on the Pease limitation and sample calculations, see CRS Report R41796, *Deficit Reduction: The Economic and Tax Revenue Effects of the Personal Exemption Phaseout (PEP) and the Limitation on Itemized Deductions (Pease)*, by (name redacted), available upon request.

²² See Internal Revenue Service, *Internal Revenue Bulletin No. 2013-47*, November 18, 2013, at <http://www.irs.gov/pub/irs-irbs/irb13-47.pdf>.

- \$309,900, if married filing jointly or a surviving spouse; or
- \$154,950, if married, filing separately.²³

Summary of Individual Tax Deductions

Table 1 and **Table 2** provide a summary of above- and below-the-line tax deductions, respectively.²⁴ The first column provides a reference to where the provision can be found on the Form 1040 (if an above-the-line deduction) or on the Schedule A form (if a below-the-line, itemized tax deduction). The provision column contains a reference to where the provision can be found in the Internal Revenue Code (IRC), which is Title 26 of the U.S. Code. A brief summary of the provision follows in the adjacent column. When applicable, annual limits (whether they are floors or ceilings) and income limits and phaseouts are provided.²⁵ The last column provides the tax expenditure amount for FY2014 and FY2015.²⁶

Abbreviations Used in Table 1 and Table 2

S: Single tax filer
MFJ: Married, filing jointly
MFS: Married, filing separately
HOH: Head of household filer
SS: Surviving spouse filer

Tax expenditures are defined under the Congressional Budget and Impoundment Control Act of 1974 (P.L. 93-344) as “revenue losses attributable to provisions of the Federal tax laws which allow a special exclusion, exemption, or deduction from gross income or which provide a special credit, a preferential rate of tax, or a deferral of tax liability.”²⁷ Tax expenditure estimates are based on current law, which does not assume extensions of temporary provisions that are subject to expire within the time period observed. Not all tax deductions have JCT tax expenditure estimates, as some provisions are estimated to result in revenue losses less than \$50 million per fiscal year (JCT’s *de minimus* level). In addition, some tax deductions are not considered tax expenditures for various, other reasons.²⁸ For example, the deduction for uncompensated employee expenses is considered an appropriate measure to adjust a tax filer’s AGI.

²³ See Internal Revenue Service, *Internal Revenue Bulletin No. 2014-47*, November 17, 2014, at <http://www.irs.gov/pub/irs-drop/rp-14-61.pdf>.

²⁴ For more information about each provision, please refer to the latest IRS tax guide or the specific Internal Revenue Code provision within the U.S. Code. These summary tables are not meant to be a substitute for professional tax assistance.

²⁵ Some provisions in the tax code are phased out (i.e., their value is reduced as income rises) for higher-income taxpayers as a way to target tax benefits on middle- and lower-income households and to limit the loss of revenue.

²⁶ U.S. Congress, Joint Committee on Taxation, *Estimates of Federal Tax Expenditures, For Fiscal Years 2014-2018*, 113th Cong., 2nd sess., August 5, 2014, JCX-97-14 (Washington: GPO, 2014), at <https://www.jct.gov/publications.html?func=startdown&id=4663>.

²⁷ P.L. 93-344, Section 3(3).

²⁸ For a discussion of the debate over what is and what is not a *tax expenditure*, see Leonard E. Burman, “Is the Tax Expenditure Concept Still Relevant?,” *National Tax Journal*, vol. 56, no. 3 (September 2003), pp. 613-627, and Donald B. Marron, “Spending in Disguise,” *National Affairs*, no. 8 (Summer 2011), at <http://www.nationalaffairs.com/publications/detail/spending-in-disguise>.

Table 1. Summary of Above-the-Line, Tax Deductions for Individuals

1040 Line ^a	Provision	Summary of Deductible Expense	Annual Deduction Limit	Income Limits and Phaseouts	Tax Expendi- ture, in Billions ^b
23	Educator expenses <i>IRC §62</i>	An eligible employee of a public (including charter) and private elementary or secondary school may deduct ordinary and necessary expenses paid in connection with books, supplies, equipment (including computers and software), and other materials used in the classroom. <i>This “tax extender” provision expires after the 2014 tax year (2015 filing season).</i>	\$250	None	FY2014: NA FY2015: NA
24	Certain reimbursed business expenses of reservists, performing artists, and fee-basis government officials <i>IRC §162(p), 62(a)(2)(E), and 62(a)(1)</i>	Certain reimbursed business expenses of National Guard and Reserve members who traveled more than 100 miles from home to perform their services; performing arts-related expenses; and business expenses of fee-basis state or local government officials.	None	None	FY2014: \$0.1 FY2015: \$0.1
25	Health savings account (HSA) contributions <i>IRC §223</i>	Eligible individuals can establish Health Savings Accounts (HSAs) and fund these accounts when they have qualifying high deductible health insurance (insurance with a deductible of at least \$1,300 for single coverage and \$2,600 for family coverage, plus other criteria) and no other health care coverage, with some exceptions.	2014: \$3,300 for individual plans and \$6,550 for family plans; individuals aged 55 or older can contribute an additional \$1,000. 2015: \$3,350 for individual plans and \$6,650 for family plans; individuals aged 55 or older can contribute an additional \$1,000.	None	FY2014: \$1.6 FY2015: \$1.9

1040 Line ^a	Provision	Summary of Deductible Expense	Annual Deduction Limit	Income Limits and Phaseouts	Tax Expendi- ture, in Billions ^b
25	Archer medical savings account (MSA) contributi- ons <i>IRC §220</i>	Contributions toward Archer medical savings account (MSAs). Archer MSAs are tax-exempt trust or custodial accounts, established with a U.S. financial institution, used to save money exclusively for future medical expenses. Individuals must meet the following requirements to be eligible for an Archer MSA, including: having a high deductible health plan (HDHP); having no other health or Medicare coverage; and being either a small employer or self-employed (or the spouse of a self-employed individual).	(1) Cannot exceed a taxpayer's net earned income from the business in which the health insurance plan was established. (2) For those with individual coverage: 65% of the annual deductible. For those with family coverage: 75% of the annual deductible.	None	[dm]
26	Work- related moving expenses <i>IRC §217</i>	Unreimbursed moving expenses incurred during the taxable year in connection with the commencement of work by the taxpayer as an employee or as a self-employed individual at a new principal place of work that is at least 50 miles farther from the prior residence.	None	None	NA

1040 Line ^a	Provision	Summary of Deductible Expense	Annual Deduction Limit	Income Limits and Phaseouts	Tax Expendi- ture, in Billions ^b
28	Retirement plan contributions for the self-employed <i>IRC §401-408</i>	A self-employed individual may deduct contributions to a Simplified Employment Plan (SEP), Savings Incentive Match Plan for Employees of Small Employers (SIMPLE), or Keogh plan.	Contributions cannot exceed an amount equal to 25% of pay up to a maximum amount indexed to inflation: SEP and Keogh: \$52,000 (2014), \$53,000 (2015). SIMPLE: \$12,000 (2014), and \$12,500 (2015). Participants aged 50 and older can make additional contributions of up to \$2,500 in 2014 and \$3,000 in 2015.	None	NA

1040 Line ^a	Provision	Summary of Deductible Expense	Annual Deduction Limit	Income Limits and Phaseouts	Tax Expendi- ture, in Billions ^b
29	Health insurance premiums for the self-employed <i>IRC §162(l)</i>	A self-employed individual may deduct the premium costs of health insurance or long-term care insurance as long as he or she is not eligible to participate in a plan, in a given month, sponsored by his or her employer or the spouse's employer.	(1) Cannot exceed a taxpayer's net earned income from the business in which the health insurance plan was established, less the deductions for 50% of the self-employment tax and any contributions to qualified pension plans. (2) If a self-employed individual claims an itemized deduction for medical expenses, those expenses must be reduced by any deduction for health insurance premiums.	None	FY2014: \$5.4 FY2015: \$5.6
31	Alimony paid <i>IRC §215</i>	Alimony and separate maintenance payments are income to the recipient and are deductible by the payor if certain requirements are met [U.S.C. §62(a)(10), 71, and 215]. Child support is <i>not</i> tax deductible.	None	None	NA

1040 Line ^a	Provision	Summary of Deductible Expense	Annual Deduction Limit	Income Limits and Phaseouts	Tax Expendi- ture, in Billions ^b
32	Retirement savings, including traditional individual retirement accounts (IRAs) <i>IRC §219</i>	<p>Taxpayers may deduct qualified retirement contributions, such as a 401(k) plan or a traditional IRA, generally limited to \$5,500 (increased by \$1,000 of catch-up contributions for taxpayers aged 50 and over).</p> <p>ATRA permanently expanded the availability of “in-plan Roth conversions,” allowing virtually all traditional employer-sponsored retirement account balances [like funds in a 401(k) plan] to be transferred to employer-sponsored Roth accounts [like Roth 401(k) plans]. By electing to convert a non-Roth account to a Roth account, an employee pays tax at the time the funds are rolled over or converted. However, when an employee ultimately withdraws funds from these Roth accounts they will not be subject to taxation.^c</p>	<p>The lesser of \$5,500 or 100% of compensation. The ceiling is indexed for inflation in \$500 increments. Individuals aged 50 and older may make an additional catch-up contribution of \$1,000. A married taxpayer may make deductible contributions to an IRA for the benefit of the spouse up to:</p> <p>2014: \$5,500 (\$6,500 if over 50)</p> <p>2015: \$6,000 (\$7,000 if over 50)</p>	<p>For active participants in certain pension plans, the deduction amount is phased-out proportionately over the following inflation-adjusted AGI ranges:</p> <p>MFJ: \$96,000- \$116,000 (2014), \$98,000- \$118,000 (2015),</p> <p>Taxpayers whose spouses are active participants: \$181,000- \$191,000 (2014), \$183,000- \$193,000 (2015)</p> <p>Other taxpayers: \$60,000- \$70,000 (2014), \$61,000- \$71,000 (2015).</p>	<p>FY2014: \$16.7</p> <p>FY2015: \$18.3</p>

1040 Line ^a	Provision	Summary of Deductible Expense	Annual Deduction Limit	Income Limits and Phaseouts	Tax Expenditure, in Billions ^b
33	Interest on Education Loans <i>IRC §221</i>	Interest paid on a qualified student loan is deductible in the year that the interest was paid.	\$2,500, subject to income phaseouts: MFJ: \$100,000-\$130,000 Other taxpayers: \$50,000-\$60,000	Inflation-adjusted phaseout: MFJ: \$130,000-\$160,000 (2014 and 2015) Other taxpayers: \$65,000-\$80,000 (2014 and 2015)	FY2014: \$1.7 FY2015: \$1.8
34	Qualified Tuition and Related Expenses <i>IRC §222</i>	Includes costs related to qualified tuition, fees, room and board, books, and supplies. <i>This “tax extender” provision expires after the 2014 tax year (2015 filing season).</i>	Up to \$4,000 or \$2,000, depending on AGI.	Taxpayers can deduct up to \$4,000 or up to \$2,000 of qualified tuition and related expenses depending on their AGI fell between the following ranges in 2014: \$65,000 or less (\$130,000 MFJ): \$4,000. \$65,001-\$80,000 (\$160,000 MFJ): \$2,000. \$80,000+ (\$160,000 + MFJ): \$0.	FY2014: NA FY2015: NA

Source: U.S. Congress, Senate Committee on the Budget, *Tax Expenditures: Compendium of Background Materials on Individual Provisions*, committee print, prepared by the Congressional Research Service, 111th Congress, 2nd session, December 2014, S. Prt. 113-32 (Washington: GPO, 2014); Internal Revenue Service (IRS), Publication 15 - Tax Guide for 2014, December 22, 2014, at <http://www.irs.gov/pub/irs-pdf/p15.pdf>; IRS, “IRS Announces 2015 Pension Plan Limitations; Taxpayers May Contribute up to \$18,000 to their 401(k) plans in 2015,” October 23, 2014, at <http://www.irs.gov/uac/Newsroom/IRS-Announces-2015-Pension-Plan-Limitations-1>; Internal Revenue

Service (IRS), Rev. Proc. 2014-30, May 12, 2014, at http://www.irs.gov/irb/2014-20_IRB/ar07.html; and U.S. Congress, Joint Committee on Taxation, *Estimates of Federal Tax Expenditures, For Fiscal Years 2014-2018*, 113th Cong., 2nd sess., August 5, 2014, JCX-97-14 (Washington: GPO, 2014), at <https://www.jct.gov/publications.html?func=startdown&id=4663>.

Notes:

- a. Line numbers refer to the 2014 Schedule A to the Form 1040.
- b. Tax expenditures estimates are for individuals only, not corporations. Estimates below JCT's *de-minimus* amount of \$50 million, as per its August 2014 estimates, are denoted by [dm]. Provisions without a JCT tax expenditure amount are denoted by NA.
- c. For more information on changes to the tax treatment of IRAs, see CRS Report R42894, *An Overview of the Tax Provisions in the American Taxpayer Relief Act of 2012*, by (name redacted) .

Table 2. Summary of Below-the-Line, Itemized Tax Deductions for Individuals

Schedule A Line ^a	Provision	Summary of Deductible Expense	Annual Deduction Floor or Limit	Income Limits and Phaseouts	Tax Expenditure, in Billions ^b
1	Medical and dental expenses <i>IRC §213</i>	Includes the diagnosis, cure, mitigation, treatment, or prevention of disease, or for the purpose of affecting any structure or function of the body; lodging and transportation costs related to essential medical care; qualified long-term care services; insurance covering medical care for any qualified long-term care insurance contract; and prescribed drugs.	Expenses are deductible only if they exceed the floor of 10% of adjusted gross income (AGI).	None	FY2014: \$9.9 FY2015: \$11.0
5 and 7	State and local nonbusiness, income, sales, and personal property taxes <i>IRC §164</i>	Taxpayers who itemize can choose between deducting either state and local income taxes or sales taxes, but not both. State and local income taxes are withheld from wages during the year, as they appear on Form W-2. Non-business state or local property taxes are also deductible. <i>The option to deduct sales taxes in lieu of income taxes “tax extender” provision expires after the 2014 tax year (2015 filing season).</i>	None	None	FY2014: \$56.5 FY2015: \$59.2
6	Real estate taxes <i>IRC §164</i>	Tax filers can claim an itemized deduction for property taxes paid on owner-occupied residences.	None	None	FY2014: \$31.9 FY2015: \$34.0
8	Federal estate tax on income in respect of a decedent (IRD) <i>IRC §691(c)</i>	The IRS allows any recipient of current or future IRD to deduct any properly allocable expenses against the income that was not claimed on the decedent’s final tax return for estate tax purposes. Common items include fiduciary fees, commissions paid to dispose of assets, and state income taxes.	None	None	NA

Schedule A Line ^a	Provision	Summary of Deductible Expense	Annual Deduction Floor or Limit	Income Limits and Phaseouts	Tax Expenditure, in Billions ^b
10-11	Home mortgage interest and other provisions related to homeownership <i>IRC §163(h)</i>	Interest paid on an eligible mortgage secured by a principal or secondary residence is deductible. Interest can also be deducted on home equity loans. The sum of the acquisition indebtedness and home equity debt cannot exceed the fair market value of the home(s). Home equity debt means any loan whose purpose is not to acquire, to construct, or substantially to improve a qualified home, or any loan whose purpose was to substantially improve a qualified home but exceeds the home acquisition debt limit.	Mortgage interest paid on primary and secondary residences are deductible up to: MFJ: the first \$1,000,000 of a mortgage. Other taxpayers: the first \$500,000 of a mortgage. The deduction for interest on home equity debt is limited to interest associated with the first \$100,000 in home equity debt combined from a primary and secondary residence.	None	FY2014: \$67.8 FY2015: \$74.8

Schedule A Line ^a	Provision	Summary of Deductible Expense	Annual Deduction Floor or Limit	Income Limits and Phaseouts	Tax Expenditure, in Billions ^b
13	Home mortgage insurance premiums <i>IRC §163</i>	<p>Qualified mortgage insurance premiums are deductible if the insurance policy covers home acquisition debt on a primary or secondary residence. Qualified mortgage insurance means mortgage insurance obtained from the Department of Veterans Affairs (VA), the Federal Housing Authority (FHA), the Rural Housing Administration (RHA), and private mortgage insurance as defined by the Homeowners Protection Act of 1988.</p> <p><i>This “tax extender” provision expires after the 2014 tax year (2015 filing season).</i></p>	None	<p>Deduction is reduced by 10% for each \$1,000 a filer’s income is over the following AGI thresholds:</p> <p>MFJ: \$100,000</p> <p>Other taxpayer s: \$50,000</p> <p>And completely phases out by:</p> <p>MFJ: \$109,000</p> <p>Other taxpayer s: \$54,500</p>	<p>FY2014: \$0.6</p> <p>FY2015: [dm]</p>
14	Investment interest <i>IRC §163</i>	Tax filers can deduct investment interest, or money borrowed to purchase taxable interests. Leftover investment interest expenses can be carried over for use in future years, without expiration.	Interest expenses are deductible up to the amount of any net investment income.	None	NA

Schedule A Line ^a	Provision	Summary of Deductible Expense	Annual Deduction Floor or Limit	Income Limits and Phaseouts	Tax Expenditure, in Billions ^b
16-18	Charitable contributions <i>IRC §170 and 642(c)</i>	Subject to certain limitations, charitable contributions may be deducted by individuals, corporations, and estates and trusts. The contributions must be made to specific types of organizations, including scientific, literary, or educational organizations [as specified by IRC §501(c)(3)].	Can deduct contributions up to 50% of AGI that go to 501(c)(3) organizations. For contributions to non-operating foundations and organizations, deductibility is limited to the lesser of 30% of the taxpayer's contribution base, or the excess of 50% of the contribution base for the tax year over the amount of contributions which qualified for the 50% deduction ceiling (including carryovers from previous years). Gifts of capital gain property to these organizations are limited to 20% of AGI.	None	FY2014: \$43.8 ^c FY2015: \$45.6

Schedule A Line ^a	Provision	Summary of Deductible Expense	Annual Deduction Floor or Limit	Income Limits and Phaseouts	Tax Expenditure, in Billions ^b
20	Casualty, disaster, or theft losses <i>IRC §165(c)(3), 165(e), 165(h) - 165(k).</i>	Applies to non-business property lost due to fire, storm, shipwreck, or other casualty, or from theft. The cause of the loss should be considered a sudden, unexpected, and unusual event. The loss must be sustained (e.g., without expectation of being compensated).	Limited to losses in excess of \$100 per event and 10% of AGI combined for all events.	None	FY2014: \$0.4 FY2015: \$0.4
21	Unreimbursed employee expenses <i>IRC §162</i>	Includes miscellaneous job-related unreimbursed expenses, such as travel costs, union dues, job-related education, uniforms, and subscriptions to professional journals.	Subject to the combined expenses floor in excess of 2% of AGI.	None	NA
22	Tax preparation fees <i>IRC §212</i>	Tax preparation fees and expenses, including the cost of tax preparation software programs and tax publications, are deductible.	Subject to the combined expenses floor in excess of 2% of AGI.	None	NA
23	Other financial and investment expenses <i>IRC §212</i>	Includes expenses such as investment management fees, safe deposit box rental fees, and transportation to an investment broker's or advisor's office.	Subject to the combined expenses floor in excess of 2% of AGI.	None	NA ^d
28	Gambling losses that offset gambling winnings <i>IRC §165</i>	Wagering losses are deductible only to the extent of the taxpayer's gains from similar transactions (U.S.C. §165(d); Reg Sec 1.165-10). Nonbusiness gambling losses are deductible only as itemized deductions. If gambling is conducted as a business, the losses are deductible as business losses on form Schedule C.	Gambling losses claimed as a deduction cannot exceed winnings in the same year.	None	NA
28	Impairment-related work expenses of a person with disabilities <i>ICR §67(d)</i>	Qualified impairment-related work expenses are deductible. These include expenses, such as: prosthetics, specialized office equipment, supplies, or an attendant during work hours.	None	None	NA

Source: U.S. Congress, Senate Committee on the Budget, *Tax Expenditures: Compendium of Background Materials on Individual Provisions*, committee print, prepared by the Congressional Research Service, 111th Congress, 2nd session, December 2014, S. Prt. 113-32 (Washington: GPO, 2014); Internal Revenue Service (IRS), Publication 15

- Tax Guide for 2014, December 22, 2014, at <http://www.irs.gov/pub/irs-pdf/p15.pdf>; IRS, "IRS Announces 2015 Pension Plan Limitations; Taxpayers May Contribute up to \$18,000 to their 401(k) plans in 2015," October 23, 2014, at <http://www.irs.gov/uac/Newsroom/IRS-Announces-2015-Pension-Plan-Limitations-1>; Internal Revenue Service (IRS), Rev. Proc. 2014-30, May 12, 2014, at http://www.irs.gov/irb/2014-20_IRB/ar07.html; and U.S. Congress, Joint Committee on Taxation, *Estimates of Federal Tax Expenditures, For Fiscal Years 2014-2018*, 113th Cong., 2nd sess., August 5, 2014, JCX-97-14 (Washington: GPO, 2014), at <https://www.jct.gov/publications.html?func=startdown&id=4663>.

Notes:

- a. Line numbers refer to the 2014 Schedule A to the Form 1040.
- b. Tax expenditures estimates are for individuals only, not corporations. Estimates below JCT's *de-minimis* amount of \$50 million, as per its August 2014 estimates, are denoted by [dm]. Provisions without a JCT tax expenditure amount are denoted by NA.
- c. This estimate is the sum of the three different categories of charitable giving included in JCT's tax expenditures estimates that were estimated in August 2014.
- d. JCT did not provide a tax expenditure estimate for this provision, as it is considered to be a negative tax expenditure (i.e., revenue net-gain).

Author Contact Information

(name redacted)
Analyst in Public Finance
fedactedj@crs.loc.gov7-....

EveryCRSReport.com

The Congressional Research Service (CRS) is a federal legislative branch agency, housed inside the Library of Congress, charged with providing the United States Congress non-partisan advice on issues that may come before Congress.

EveryCRSReport.com republishes CRS reports that are available to all Congressional staff. The reports are not classified, and Members of Congress routinely make individual reports available to the public.

Prior to our republication, we redacted names, phone numbers and email addresses of analysts who produced the reports. We also added this page to the report. We have not intentionally made any other changes to any report published on EveryCRSReport.com.

CRS reports, as a work of the United States government, are not subject to copyright protection in the United States. Any CRS report may be reproduced and distributed in its entirety without permission from CRS. However, as a CRS report may include copyrighted images or material from a third party, you may need to obtain permission of the copyright holder if you wish to copy or otherwise use copyrighted material.

Information in a CRS report should not be relied upon for purposes other than public understanding of information that has been provided by CRS to members of Congress in connection with CRS' institutional role.

EveryCRSReport.com is not a government website and is not affiliated with CRS. We do not claim copyright on any CRS report we have republished.