



U.S.-South Korea Beef Dispute: Issues and Status

-name redacted-

Specialist in Agricultural Policy

-name redacted-

Specialist in Asian Affairs

August 3, 2011

Congressional Research Service

7-....

www.crs.gov

RL34528

CRS Report for Congress

Prepared for Members and Committees of Congress

Summary

The Obama Administration had been pressed to resolve the terms of U.S. beef access to South Korea before the Korea-U.S. Free Trade Agreement (KORUS FTA) goes to Congress for debate. While Korea committed in the FTA to reduce its 40% tariff on imported U.S. beef over a 15-year period, its limits on such imports for human health reasons threatened to undercut this preferential benefit for U.S. exporters. In 2003, South Korea was the third-largest market for U.S. beef exports, prior to the ban its government imposed after the first U.S. cow infected with mad cow disease, or BSE (bovine spongiform encephalopathy), was discovered. U.S. efforts to regain full access became intertwined with the subsequent KORUS negotiations, but did not yield results by the time those talks concluded in April 2007. In reaction, some Members of Congress stated their consideration of, and support for, KORUS depends on South Korea fully opening its market to U.S. beef.

On April 18, 2008, U.S. and South Korean negotiators signed a protocol, or agreement, on sanitary rules that Korea will apply to beef imports from the United States. It allows for imports of all cuts of U.S. boneless and bone-in beef and certain beef products from cattle, *irrespective of age*, as long as specified risk materials known to transmit mad cow disease are removed and other conditions are met. Though the U.S. beef industry and U.S. policymakers welcomed this deal, Korean TV coverage and Internet-spread rumors that questioned the safety of U.S. beef resulted in escalating protests and calls for the beef agreement to be renegotiated or scrapped. U.S. officials countered that measures already in place to prevent the introduction of BSE in U.S. cattle herds meet international scientific standards. To address rising public pressure, the Korean government twice pursued talks with the United States to find ways to defuse these concerns without “renegotiating” the beef protocol. This culminated in the June 21, 2008, confirmation by both governments of a “voluntary private sector” arrangement that allows Korean firms to import U.S. beef produced from cattle *only under 30 months of age*. Both governments view this as a transitional step until Korean consumer confidence in the safety of U.S. beef improves.

Since the resumption of U.S. beef exports in July 2008, U.S. exporters have worked to recapture this key overseas market. Beef exports to South Korea in 2010 totaled \$518 million, about two-thirds of the record 2003 level. In 2011’s first five months, exports (at \$331 million) were twice the level recorded in the same period the year before. Promotional efforts to rebuild consumer confidence in U.S. beef, aggressive marketing efforts by large store chains, and much lower retail prices for imported beef than for Korean beef account for the continued growth in U.S. beef sales.

Following President Obama’s mid-2010 decision to present the KORUS FTA to Congress in 2011, Administration officials worked to resolve the beef and auto issues with South Korea. By the time bilateral talks concluded on December 3, 2010, the beef issue reportedly had received little discussion as both sides focused on revising the auto provisions. Korea’s position was shaped by the memory of the size and intensity of the 2008 anti-beef agreement protests. President Obama, in discussing this outcome, stated that the United States will continue to work toward “ensuring full access for U.S. beef to the Korean market.” To address lingering congressional concerns, the Administration in early May 2011 committed to request consultations with South Korea on the “full implementation” of the protocol as soon as KORUS takes effect, and to provide additional funds for U.S. beef promotion activities in the Korean market. Beef and meat industry groups have welcomed the steps made since to submit KORUS to Congress, have expressed their support, and have urged Congress to move quickly to ratify it.

Contents

The “Mad Cow” Disease Dispute.....	1
U.S. Beef Exports to South Korea Through 2003	1
South Korea’s Ban on U.S. Beef Imports	3
Beef Access Became Intertwined with KORUS FTA Talks	3
U.S. Beef Exports During the 2004-2007 Period	4
U.S. and South Korean Negotiating Objectives	5
April 2008 Beef Agreement and Subsequent Change	5
Reaction to April 2008 Agreement	6
Beef in the KORUS FTA	8
Market Access Provisions.....	8
Cattle Producer and Meat Industry Views	8
Implementation of 2008 Beef Access Agreement.....	9
Administrative Steps Taken	9
Beef Sales Under the Agreement.....	10
Impact of Beef Protests on Bilateral Relations and the KORUS FTA.....	12
Beef Access Status after Talks on the Supplemental Agreement	13
Positions Heading into Final Talks	13
No Change on Beef Issue After Talks.....	14
Administration’s Subsequent Commitment.....	15

Figures

Figure 1. Value of U.S. Beef Exports to South Korea, by Type.....	2
Figure 2. Quantity of U.S. Beef Exports to South Korea, by Type.....	2
Figure 3. South Korean Beef Imports by Leading Suppliers.....	3
Figure 4. Value of U.S. Beef Exports to South Korea, Quarterly	10
Figure 5. Quantity of U.S. Beef Exports to South Korea, Quarterly	11

Contacts

Author Contact Information.....	16
---------------------------------	----

Many U.S. policymakers have viewed the resumption of all U.S. beef exports to South Korea—the third-largest U.S. beef export market in 2003—as essential, but not necessarily all that is required, before the U.S. Congress considers legislation to implement the Korea-U.S. Free Trade Agreement (KORUS FTA).¹ To facilitate this, in April 2008 the U.S. and Korean governments agreed on (but subsequently modified) the rules that Korea will apply to U.S. beef imports to ensure that shipments meet Korean human health standards. South Korea’s aim was to improve the prospects so that the Bush Administration would send the KORUS FTA to Congress before the end of 2008. This did not occur, however, for the reasons explained below. In late June 2010, President Obama directed U.S. trade officials to work with their South Korean counterparts to resolve outstanding matters related to U.S. beef access and the agreement’s automobile provisions² by the time he met with South Korean President Lee in Seoul in mid-November 2010. In the talks that led to the December 2010 supplemental agreement, the issue of full U.S. beef access was not resolved because of its political sensitivity in South Korea.

This report describes the beef provisions in the KORUS FTA and the separate bilateral protocols that the United States has negotiated in order to secure the lifting of South Korea’s ban on U.S. beef imports, imposed after the discovery of mad cow disease in late 2003. It also summarizes U.S. beef export developments to this key market before and after the ban and since these protocols took effect and lays out the outstanding issues on U.S. beef access that have been raised in advance of expected congressional consideration of the KORUS FTA this fall.

The “Mad Cow” Disease Dispute

U.S. Beef Exports to South Korea Through 2003

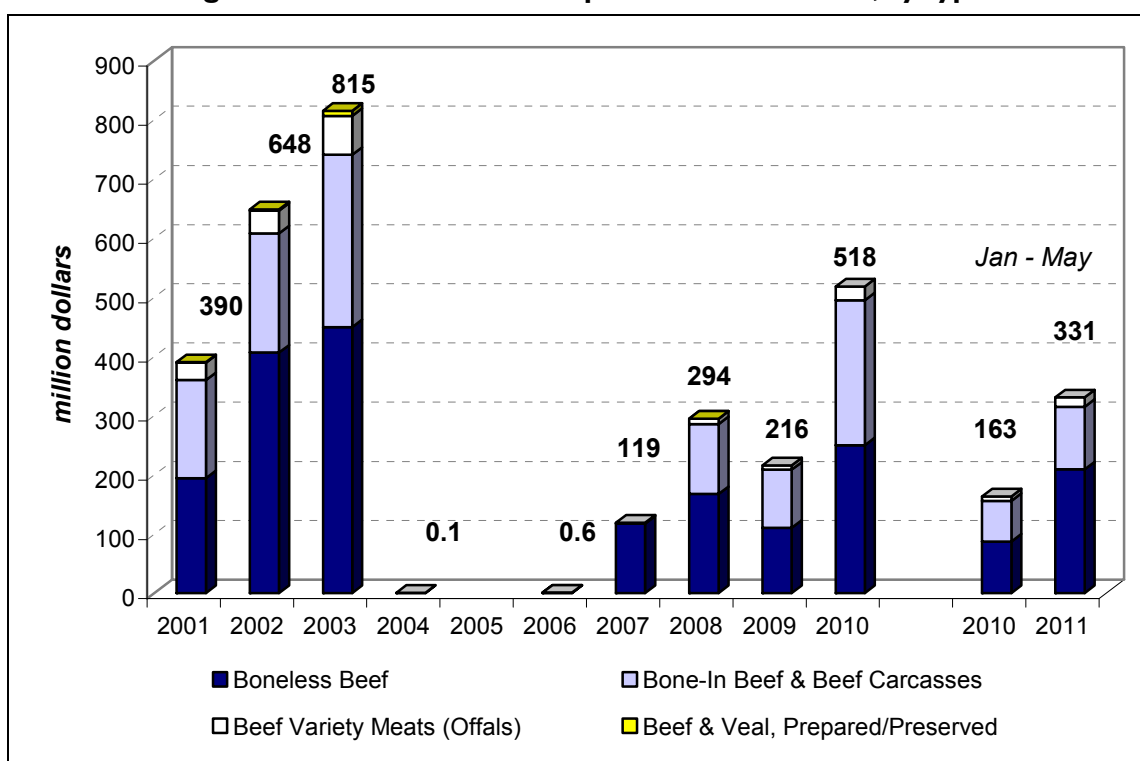
Beginning in the late 1990s, South Korea became a growing and important market for major beef exporters, particularly the United States. In 2003, beef imports accounted for nearly 75% of South Korean beef consumption. U.S. shipments that year alone supplied half of all of the beef consumed by Korean consumers.

By 2003, South Korea had become the third-largest export market for U.S. beef. That year, U.S. beef exports to South Korea totaled \$815 million (**Figure 1**), or 246,595 metric tons (MT) (**Figure 2**), and accounted for 21% of the \$3.9 billion in U.S. beef products shipped worldwide. Beef exports represented 28% of all U.S. agricultural exports to Korea. Boneless beef products accounted for \$449 million (55% of the total). Bone-in beef exports totaled \$292 million (36%). Sales of beef variety meats (primary offals—tongue, liver, heart, and other edible cattle parts) were \$65 million (8%). Processed beef product shipments were valued at \$9 million (1%). The U.S. market share of Korea’s beef imports reached 69% (**Figure 3**).

¹ For more information, see CRS Report RL34330, *The Proposed U.S.-South Korea Free Trade Agreement (KORUS FTA): Provisions and Implications*, coordinated by (name redacted).

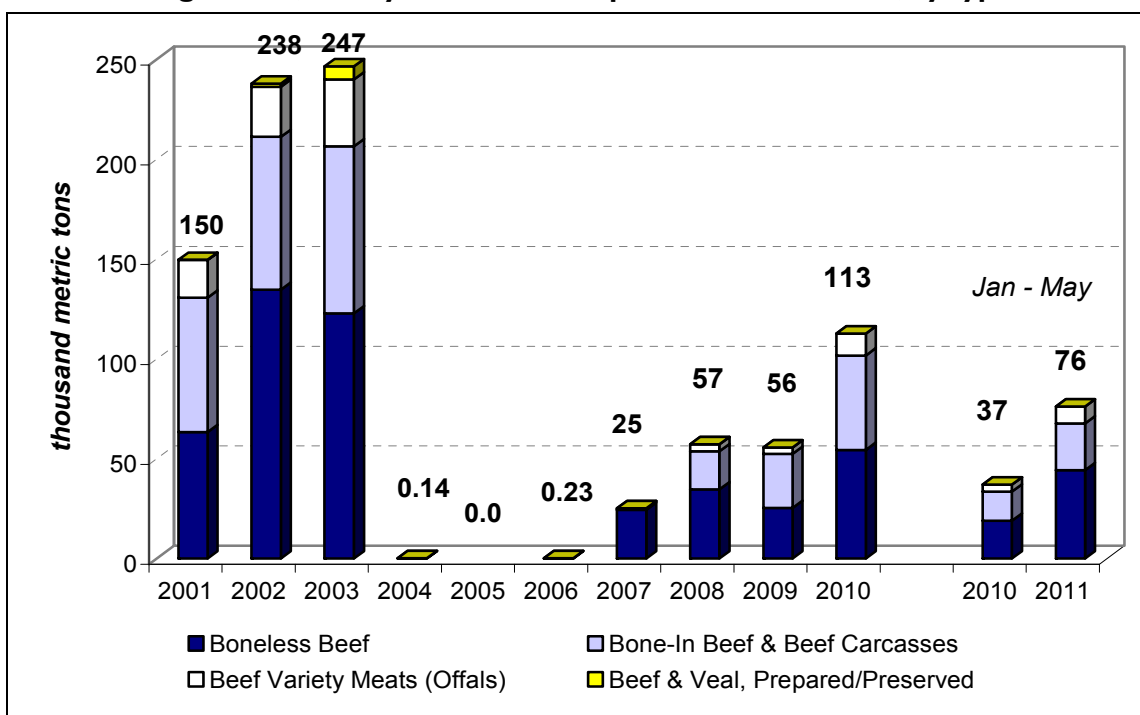
² For more information on the automobile provisions, see section titled “Competing Automobile Manufacturers” in CRS Report R41389, *Pending U.S. and EU Free Trade Agreements with South Korea: Possible Implications for Automobile and Other Manufacturing Industries*, by (name redacted).

Figure 1. Value of U.S. Beef Exports to South Korea, by Type

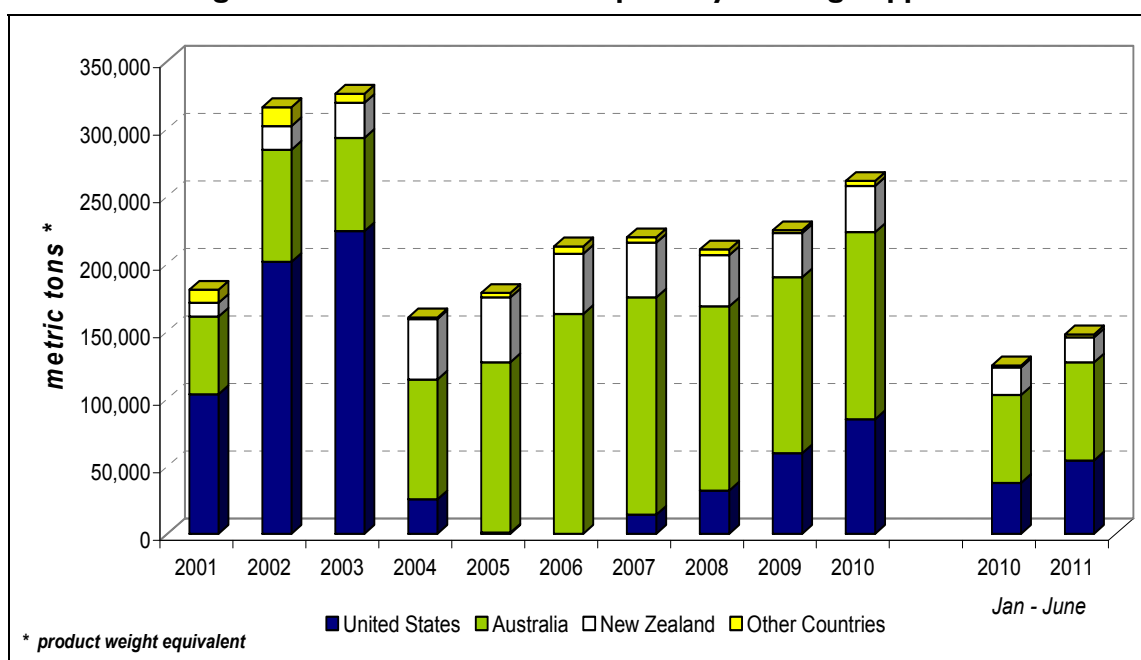


Source: Derived by CRS from Department of Commerce, U.S. Census Bureau, Foreign Trade Statistics.

Figure 2. Quantity of U.S. Beef Exports to South Korea, by Type



Source: Derived by CRS from Department of Commerce, U.S. Census Bureau, Foreign Trade Statistics.

Figure 3. South Korean Beef Imports by Leading Suppliers

Source: U.S. Department of Agriculture (USDA), Foreign Agricultural Service; Korea International Trade Association; Global Trade Atlas.

Note: Imports refer to beef, fresh/chilled and frozen, boneless and bone-in, but exclude beef variety meats and processed beef products.

South Korea's Ban on U.S. Beef Imports

After the first U.S. case of *bovine spongiform encephalopathy* (BSE), or mad cow disease, was discovered in a Canadian-born cow in Washington State in December 2003,³ South Korea and many other countries banned imports of U.S. beef. BSE is a fatal, neurodegenerative disease of cattle thought to arise from the consumption of animal-derived protein supplements added to feed. Scientists believe that this disease can be transmitted to humans who eat the brain, spinal cord, or other high-risk tissues of BSE-infected cattle, which causes a variant form of Creutzfeldt-Jakob disease (CJD). This is a very rare and incurable degenerative neurological disorder (brain disease) that is ultimately fatal.

Beef Access Became Intertwined with KORUS FTA Talks

U.S. government efforts to regain partial access to the key Korean market took two years to negotiate. In January 2006, South Korea agreed to a protocol that allowed imports of U.S.

³ There have been only two other discoveries of BSE in cattle in the United States—in June 2005, in a U.S.-born cow on a Texas farm, and in March 2006, in another U.S.-born cow in Alabama. For more information on U.S. safeguards to protect cattle herds from BSE, third-party assessments made of U.S. import safeguards against the introduction of BSE, debate and developments on the livestock “feed ban” issue, U.S. surveillance and testing programs for BSE in cattle, and BSE prevention in cattle slaughter and beef processing, see CRS Report RL32199, *Bovine Spongiform Encephalopathy (BSE, or “Mad Cow Disease”): Current and Proposed Safeguards*, by (name redacted) and (name redacted).

boneless beef only from cattle *less than 30 months old*. At that time, the under-30-months-old criterion was based on the widely held view that cattle younger than 30 months were less susceptible to mad cow disease. U.S. negotiators had signaled that some opening on the beef issue was necessary before negotiations with South Korea on a comprehensive FTA could begin. Difficulties experienced in exporting beef later that year to Korea under this first agreement, however, began to affect the negotiating dynamics of the overall FTA, even though this issue was not on the formal agenda. Separate bilateral discussions on this sensitive issue moved from the technical level to high-level meetings as both sides raced to conclude the KORUS FTA by the end of the March 2007 deadline set by then-in-effect trade promotion authority. However, the beef issue was not resolved by the time both countries concluded this trade agreement.

Then-South Korean President Roh Moo-hyun, in a national address on April 1, 2007, stated he had personally promised President Bush that his government would “uphold the recommendations” of the World Organization for Animal Health (OIE) on the BSE risk status of the United States and “open the Korean [beef] market at a reasonable level.” The OIE is the international scientific body recognized by the World Trade Organization as the reference for matters of animal disease and health. On May 22, 2007, the OIE formally found that the United States is a “controlled risk” country for the spread of mad cow disease. The U.S. Department of Agriculture’s (USDA’s) top official on this matter commented that this “risk classification recognizes that OIE-recommended, science-based measures are in place to effectively manage any possible risk of BSE in the [U.S.] cattle population” and “provides strong support that U.S. regulatory controls are effective and that U.S. cattle and products from cattle of all ages can be safely traded in accordance with international guidelines, due to our interlocking safeguards.”⁴

USDA immediately requested that South Korea amend its import requirements for U.S. beef within a specified time frame to reflect this risk determination and to reopen its market to all U.S. cattle and beef products. In response, South Korea’s animal health regulatory agency began an eight-step process to assess the BSE risks of the U.S. beef sector in light of the OIE finding, with the intent to negotiate a revised bilateral agreement that would lay out import rules applicable to U.S. beef. Against this backdrop, U.S. boneless beef exports resumed in late April 2007, with occasional breaks when Korean inspectors refused entry to some shipments that contained bones or did not meet other requirements laid out in the January 2006 agreement. With the third discovery of prohibited bones on October 5, 2007, South Korean authorities announced they would not conduct any more inspections of U.S. beef until both sides concluded formal negotiations to revise the 2006 protocol.

U.S. Beef Exports During the 2004-2007 Period

Minimal U.S. beef offal exports occurred in 2004, 2005, and 2006 (**Figure 1** and **Figure 2**), due to South Korea’s ban on imports after the first U.S. BSE-infected cow was discovered in December 2003. Though some U.S. boneless beef sales occurred in the last few months of 2006 after South Korea agreed to implement the January 2006 agreement, Korean inspectors rejected these shipments after discovering small bone fragments in a few boxes. From 2004 to 2006, beef shipments from Australia and New Zealand increased substantially to cover South Korean

⁴ USDA, Animal and Plant Inspection Service, “Statement by Dr. Ron DeHaven Regarding OIE Risk Recommendation,” March 9, 2007, available at http://www.aphis.usda.gov/newsroom/content/2007/03/OIE_statement3-9-07.shtml.

demand that had previously been met by U.S. beef exporters (**Figure 3**). In 2007, both countries accounted for 92% of South Korea's beef imports, compared to 29% in 2003.

U.S. boneless beef exports to South Korea resumed in late April 2007 and continued through early October 2007, when bone fragments again were found. During this period, Korea's quarantine regulatory agency inspected and cleared for retail sale most U.S. boneless beef shipments, applying its interpretation of the January 2006 agreement. Even with partial-year exports, South Korea ranked as the fourth-largest market for U.S. beef in 2007, with sales of \$119 million (**Figure 1**), or 25,165 MT (**Figure 2**).

U.S. and South Korean Negotiating Objectives

The long-standing U.S. negotiating position had been to press for full access in one step for all U.S. beef into South Korea's market. This meant expanding the scope of the 2006 agreement to include exports of *bone-in* beef and coverage of all U.S. beef from cattle, *regardless of age*, as long as BSE-risk materials are removed during processing. U.S. trade officials maintained that U.S. beef is safe, pointing out that it is consumed by millions of Americans. They frequently noted that the U.S. measures in place to prevent the introduction of BSE in U.S. cattle herds already meet international scientific standards as spelled out by the OIE.

South Korea argued for a "two-phased" approach to a full opening. The first step would allow imports of both boneless and bone-in beef cuts from U.S. cattle less than 30 months old. Cattle parts identified by the OIE as agents that can transmit BSE to cattle and in turn, potentially harm humans, would have to be removed from imported beef. Korea's trade minister argued this first step would give the United States about 80% of the market share it had before the ban on U.S. beef took effect in late 2003. The second step to take effect later would permit imports of beef from older cattle, as long as risk materials are removed according to OIE's standards.⁵

April 2008 Beef Agreement and Subsequent Change

Just hours before newly elected Korean President Lee met President Bush at Camp David on April 18, 2008, U.S. and South Korean negotiators reached agreement on the sanitary rules that Korea will apply to beef imports from the United States. It allows for imports of all cuts of U.S. *boneless* and *bone-in* beef and other beef products from the edible parts of cattle, *irrespective of age*, as long as specified risk materials (SRMs) known to transmit mad cow disease are removed and other conditions are met. However, both sides revised this deal in a late-June private-sector arrangement that will for an unspecified time period limit sales of U.S. beef (boneless and bone-in) only to cattle less than 30 months old when slaughtered. Combined, these terms significantly expanded upon the products covered by the January 2006 protocol, which only permitted imports of boneless beef from cattle under 30 months old.

The April 2008 agreement requires the removal of specified risk materials (SRMs) during meat processing, and prohibits the entry of (1) all mechanically recovered and mechanically separated meat and (2) advanced meat recovery (AMR) product from the skull and vertebral column of cattle 30 months of age and over at the time of slaughter. These prohibitions reflect scientific

⁵ *Inside U.S. Trade*, "Korean Minister Sees Open Beef Market In Two Steps, Delay In FTA Approval," November 16, 2007, p. 5.

conclusions that these materials can harbor the BSE agent in cattle and in turn infect humans if product from such cattle is consumed.⁶ Other provisions detail which other beef products can enter, or are prohibited from entering, South Korea.⁷ The agreement also prescribes the steps that South Korea's quarantine inspection agency can take if banned cattle parts or other problems are found in a shipment from a U.S. meat firm, and specifies what its counterpart U.S. agency (USDA's Food Safety and Inspection Service) must do to address the matter. These are intended to serve as a map for handling specific problems in a way that does not stop altogether the flow of all U.S. beef exports to South Korea. Other rules spell out the requirements that U.S. beef processing plants and the FSIS must meet, in order for beef and beef products to be sold to South Korea.⁸

The private-sector deal announced on June 21, 2008, reflects a "commercial understanding" reached between Korean beef importers and U.S. exporters, that as "a transitional measure," only U.S. beef from cattle under 30 months of age will be sold to Korea. The U.S. Trade Representative (USTR), in acknowledging the request made by the U.S. meat industry for Korea's beef importers, stated that the U.S. government will meet this request under a Quality System Assessment (QSA) program that will verify that beef destined for Korea will be from cattle less than 30 months old. This program will be voluntary—operating only at those beef processing plants that seek to sell beef and beef products to that market.⁹ (See "Implementation of 2008 Beef Access Agreement" for status of this QSA program.)

Reaction to April 2008 Agreement

While the U.S. beef industry and U.S. policymakers welcomed the April deal, Korean TV coverage of the issue and Internet-spread rumors that questioned the safety of U.S. beef sparked large candlelight vigils in South Korea to protest the beef agreement. Opposition political parties soon joined these protests, advocating that the government renegotiate or scrap the agreement. Farmers also called for the National Assembly (Korea's parliament) to reject the KORUS FTA when considered during a special session later in May 2008. Opponents argued that the Korean government moved too quickly to strike a deal, and did not secure enough safeguards against the dangers of mad cow disease.

⁶ Specified SRMs are "tonsils and distal ileum from cattle of all ages; and [the] brain, eyes, spinal cord, skull, dorsal root ganglia and vertebral column (excluding vertebrae of the tail, transverse processes and spinous processes of the cervical, thoracic and lumbar vertebrae, median crest and wings of the sacrum) from cattle 30 months of age and over at the time of slaughter." For more information, see "BSE Prevention in Slaughter and Processing: the 'Fourth Firewall'" in CRS Report RL32199, *Bovine Spongiform Encephalopathy (BSE, or "Mad Cow Disease")*: *Current and Proposed Safeguards*, by (name redacted) and (name redacted).

⁷ AMR product that is free of SRMs and central nervous system tissues is allowed. Ground meat, processed products and beef extracts may contain AMR but must be free of SRMs and all mechanically recovered or separated meat.

⁸ These detail the scope of U.S. plants operating under USDA inspection that are eligible to sell to South Korea, the origin of foreign cattle imported into the United States from which beef can be exported to Korea, the steps that FSIS will take to handle cases of the discovery of a food-safety hazard in a U.S. firm's shipped beef product or inspection audit, the requirement that certain U.S. steak products be temporarily labeled, the on-site audits that Korea's inspectors can conduct of U.S. facilities exporting beef to Korea, and the scope of measures that the United States implements to meet or exceed OIE guidelines for controlled-risk BSE status.

⁹ USTR, "USTR Confirms Korea's Announcement on U.S. Beef," June 21, 2008.

These developments, in turn, adversely affected the political standing of Korea's new president and his government's inability to pursue his ruling political party's policy agenda—one item being the approval by the National Assembly of the KORUS FTA. To respond to mounting public pressure, the Korean government twice pursued talks with the United States to find ways to defuse public concerns without “renegotiating” the beef agreement. A May 19, 2008, exchange of letters affirms that South Korea has the right under international agreements to take steps to protect its citizens from health and safety risks (i.e., suspend U.S. beef imports if a BSE-infected cow is discovered in the United States). On June 21, 2008, both governments confirmed a “voluntary private sector” arrangement that allows Korean firms to import U.S. beef produced only from cattle less than 30 months old, and announced some changes to the April agreement.

Although South Korea secured the application of the under-30-months-old criterion with respect to U.S. beef imports, the OIE in contrast makes no age distinction in assessing the risk level of cattle slaughtered for beef. Instead, its recommendation is that importing countries, to prevent the introduction of BSE, ensure that beef of any age meet certain conditions, such as the removal of those cattle tissues suspected of transmitting BSE and the implementation of effective safety controls for cattle feed. Though the United States for some time has argued that it is in full compliance with OIE guidelines, U.S. negotiators appear to have had little choice but to compromise in a way that would allow some sales to resume. Publicly, both countries presented this arrangement as a transitional step to improve Korean consumer confidence in U.S. beef, and did not commit to any timetable for revisiting this matter.

Some Members of Congress responded cautiously or skeptically to the “voluntary commercial agreement,” noting that it changes the April protocol by allowing Korea to reject U.S. beef from cattle over 30 months of age, disregards international standards that affirm the safety of all U.S. beef regardless of age, and sets an “unfortunate” or “dangerous” precedent in negotiating the terms of beef access into other countries.¹⁰

South Korean government officials portrayed the June-negotiated arrangement as going far to allay public concerns about the safety of U.S. beef. However, the political fallout of the controversy continued through the summer of 2008. Three high-ranking Korean officials (including the agriculture minister and his deputy) resigned because of their involvement in the agreement's negotiations. The Korean National Assembly completed an inconclusive parliamentary inquiry on the strategy and process followed by two successive governments on negotiating this agreement. It also debated a controversial livestock sector bill that includes a ban on beef imports from any country whenever a new case of a BSE-infected cattle is discovered. As adopted, the measure reportedly exempts the bilateral beef agreement reached with the United States from being subject to its coverage.

¹⁰ For example, see press releases issued on June 21, 2008 by Senator Baucus, “Baucus Comments on U.S.-Korea Beef Changes”; Senator Chambliss, “Sen. Chambliss Statement on South Korea's Announcement Regarding U.S. Beef”; Senator Nelson, “Nelson Responds to Beef Agreement with South Korea.”

Beef in the KORUS FTA

Market Access Provisions

Under the KORUS FTA, South Korea would eliminate over a 15-year period its 40% tariff on beef muscle meats imported from the United States. South Korea also would have the right to impose additional tariffs on a temporary basis in response to any surges in imports of U.S. beef meats above specified levels.¹¹ The trigger for this additional tariff would be 270,000 metric tons (MT) in year 1, and would increase 2% annually. In year 15, the trigger would be 354,000 MT.¹² In year 16, this protective safeguard mechanism would no longer apply. Separately, the 18% tariff on imports of beef offals (tongues, livers, tails and feet), and tariffs ranging from 22.5% to 72% on other beef products, would also be eliminated in 15 years.

Assuming that South Korea fully lifts its restrictions on U.S. beef, and bilateral beef trade returns to normal, the U.S. International Trade Commission (USITC) estimates that the phase-out of South Korea's beef tariff and safeguard could increase U.S. beef exports by about \$600 million to \$1.8 billion (58% to 165%) above what would be the case without this agreement.¹³ In another analysis, the American Farm Bureau Federation (AFBF) projects that U.S. beef sales would be \$265 million higher than otherwise as the United States recaptures its historic share of the South Korean market. However, the AFBF notes that the market share of U.S. beef likely will not increase over time, because South Korean tastes have developed a preference for grass-fed Australian beef, which will continue to be competitive in price against U.S. beef even if the current 40% tariff is removed.¹⁴ A more recent analysis by USDA's Economic Research Service estimates that U.S. beef exports would be \$563 million higher under KORUS than without a trade agreement, and would account for almost one-third of the growth in additional U.S. agricultural imports.¹⁵

Cattle Producer and Meat Industry Views

Key U.S. interest groups have frequently acknowledged that the full benefits associated with the KORUS FTA's beef market access provisions can only be attained if both countries work through the issue of addressing South Korea's lingering concerns about the safety of U.S. beef exports. Cattle producers are divided on their support for the KORUS FTA. The National Cattlemen's

¹¹ In July 2011, South Korea's largest opposition party, the Democratic Party, called for the beef provisions of the KORUS FTA to be changed, so that the phase-out of the 40% tariff would not begin until the 11th year after the agreement goes into effect. As negotiated, the KORUS FTA would begin the phase-out of the beef tariff immediately. South Korea's Democratic Party officially opposes the KORUS FTA. Most observers believe that it lacks the votes to defeat the agreement in South Korea's National Assembly.

¹² In 2003, U.S. exports of beef muscle meats to South Korea totaled 213,083 MT. The safeguard level in year 1 would allow for duty-free access for about 20% more U.S. beef than the average 2002-2003 level of U.S. beef exports to the South Korean market. To place this in the context of recent export activity, U.S. beef muscle meat exports in 2010 totaled 101,816 MT.

¹³ Derived by CRS from Table 2.2 in USITC, *U.S.-Korea Free Trade Agreement: Potential Economy-wide and Selected Sectoral Effects*, pp. 2-8 and 2-9.

¹⁴ Derived by CRS from AFBF's *Implications of a South Korea-U.S. Free Trade Agreement on U.S. Agriculture*, July 2007, p. 17.

¹⁵ USDA, ERS, *Selected Trade Agreements and Implications for U.S. Agriculture*, April 2011, pp. 27 and 28.

Beef Association (NCBA) and the U.S. Cattlemen's Association (USCA) are in favor. The Ranchers-Cattlemen Action Legal Fund, United Stockgrowers of America (R-CALF USA) opposes it.¹⁶ Beef processors and packers, represented by the American Meat Institute (AMI) and the National Meat Association (NMA), support this agreement.¹⁷

Implementation of 2008 Beef Access Agreement

Administrative Steps Taken

In accordance with the April 2008 beef protocol, as modified by the June 2008 private-sector arrangement, South Korea on June 26, 2008, published rules to put the beef agreement into effect, and began to inspect U.S. beef shipments held in cold storage in Korea since the fall of 2007. Shortly thereafter, USDA agencies began implementing the procedures adopted to ensure that U.S. beef meets Korea's import requirements. Under these terms, each U.S. beef shipment to Korea must be accompanied by an export certificate issued by USDA's Food Safety and Inspection Service (FSIS) that confirms the U.S. beef establishment participates in two programs administered by USDA's Agricultural Marketing Service (AMS).¹⁸ The first is that beef and products destined for South Korea must be produced under an approved Export Verification (EV) program. This details the specific product requirements that a supplier must meet in order for an export shipment to be eligible to enter Korea. Currently, AMS lists 58 suppliers as covered by the EV program for Korea.¹⁹ The second is the voluntary Quality System Assessment (QSA) program that verifies that beef from a participating plant is from cattle under 30 months of age. Currently, AMS has approved 54 exporting establishments as eligible to ship beef product that can be certified as meeting this requirement.²⁰

¹⁶ The NCBA, with a claimed membership of 230,000 cattle producers, breeders, and feeders, advocates policy positions and economic interests on behalf of farmers and ranchers and 40 national breed and industry organizations. NCBA has been the traditional "main line" trade association representing the interests of U.S. cattle producers for over 100 years, and historically has been supportive of efforts to expand two-way trade and "free trade" generally. The USCA, formed in 2007, represents cattle producers' interests in Washington, DC, and advocates for mandatory country-of-origin labeling and international trade, market competition, reform of the mandatory beef check-off program, animal health, welfare and identification, and private property rights issues. The USCA had earlier expressed concern about the cost of the additional regulatory requirements adopted to address food safety concerns when Korea's protocol pertaining to U.S. beef imports was negotiated in April 2008. R-CALF USA, with a claimed membership of over 12,000, represents cattle producers on domestic and international trade and marketing issues. R-CALF was created in 1998 to pursue three trade cases and has taken a more skeptical approach to the Bush and Obama Administrations' trade policies, concerned about the impact of cattle and beef imports on the economic well-being of cattle ranchers.

¹⁷ The AMI, according to its website, is a national trade association representing companies that process 95% of the red meat in the United States, and their suppliers throughout America. The NMA, based in California, is a smaller trade association with about 225 member companies. Members include equipment manufacturers and food suppliers who provide services to the meat industry.

¹⁸ See USDA, FSIS, "Export Requirements for the Republic of Korea," as updated October 8, 2010, available at http://www.fsis.usda.gov/regulations_and_policies/Republic_of_Korea_Requirements/index.asp.

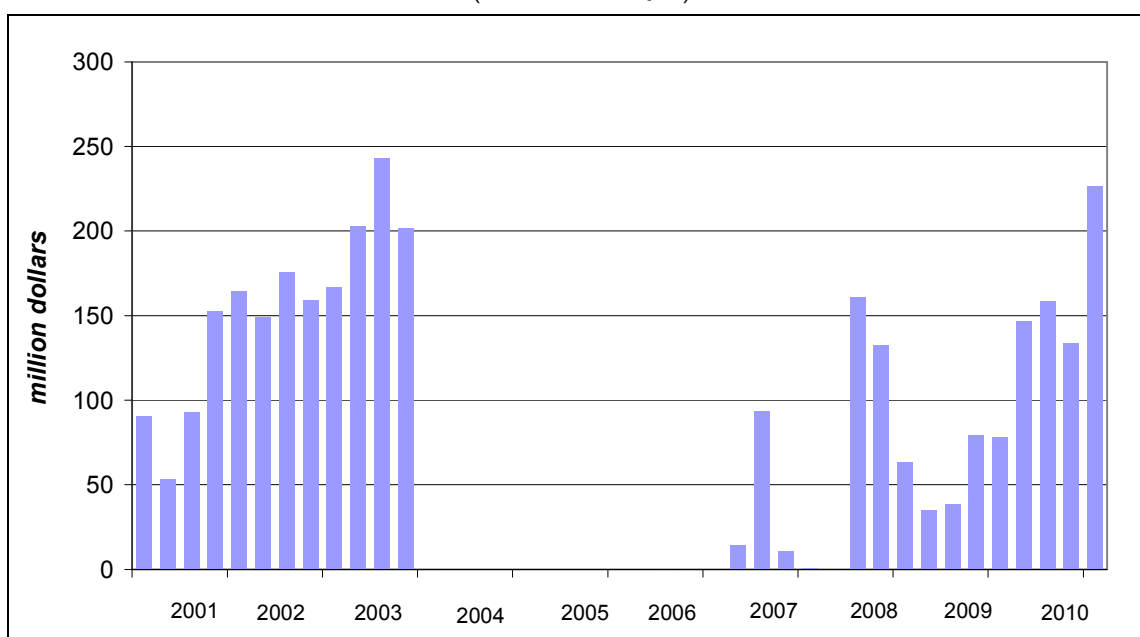
¹⁹ "Official Listing of Eligible Suppliers to the USDA Bovine EV Programs," as updated February 28, 2011, at <http://www.ams.usda.gov/AMSV1.0/getfile?dDocName=STELPRD3105269>.

²⁰ "Official Listing of Approved Suppliers for the USDA QSA Program for Korea and Taiwan," as revised February 24, 2011, at <http://www.ams.usda.gov/AMSV1.0/getfile?dDocName=STELPRDC5070251>.

Beef Sales Under the Agreement

To meet initial consumer demand following the reopening of South Korea's market to U.S. beef, shipments accelerated from mid-July 2008 through early October 2008 to supply regional wholesale markets and such retail sales outlets as local traditional butcher shops and online stores. With the build-up among importers of unsold inventories, export shipments then fell through year-end 2008. Perceiving a change in consumer sentiment towards U.S. beef, three large Korean discount retail chains began selling U.S. beef in late November 2008. Sales of U.S. beef in these major sales outlets were strong in December, largely due to discount pricing (**Figure 4** and **Figure 5**).

Figure 4. Value of U.S. Beef Exports to South Korea, Quarterly
(2001 to 2011 Q#1)



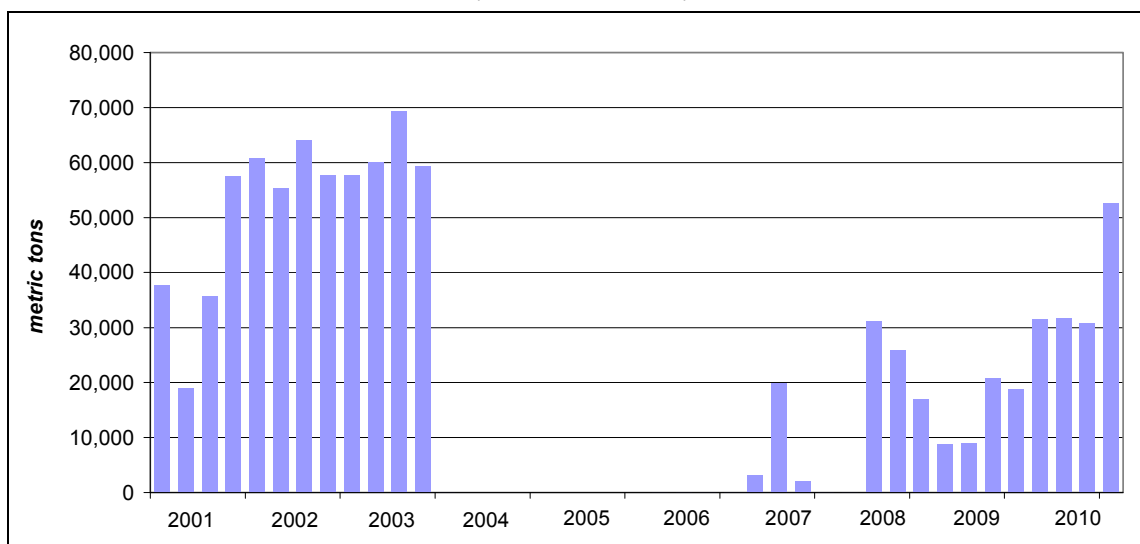
Source: Derived by CRS from Department of Commerce, U.S. Census Bureau, Foreign Trade Statistics.

Notes: Includes boneless and bone-in cuts, beef variety meats, and processed beef products (through 2003).

For **2008** as a whole, U.S. beef exports to South Korea totaled \$294 million (**Figure 1**) or 57,269 MT (**Figure 2**). Of this total, sales of bone-in beef products (previously prohibited) were \$118 million. Compared to 2007, these U.S. beef exports were 148% higher in value and 128% greater in quantity. Even though sales occurred for only half the year, South Korea ranked as the fourth-largest market for U.S. beef. For 2008 as a whole, the U.S. market share of all of Korea's beef imports rose to 15%, up from 6% in 2007 (**Figure 3**).

In **2009**, U.S. beef sales to South Korea totaled \$216 million (**Figure 1**) or 55,633 MT (**Figure 2**). Compared to 2008, these exports were lower by nearly 27% in value and 3% in quantity. South Korea again ranked as the fourth-largest destination for U.S. beef in dollar terms. The U.S. market share further increased to 26%, at the expense of Australia and New Zealand (**Figure 3**).

Figure 5. Quantity of U.S. Beef Exports to South Korea, Quarterly
(2001 to 2011 Q#1)



Source: Derived by CRS from Department of Commerce, U.S. Census Bureau, Foreign Trade Statistics.

Notes: Includes boneless and bone-in cuts, beef variety meats, and processed beef products (through 2003).

Exports fell in the first quarter of 2009, as importers worked down their inventories of frozen U.S. beef that had entered earlier. One positive development was the decision of large department store chains (another major marketing outlet) to resume sales. This reflected an acknowledgment by these other retailers that public opposition to U.S. beef had eased, with no significant problems reported since sales had begun at the discount retail stores. In the second and third quarters of 2009, U.S. beef exports to South Korea stabilized at a lower level, in part due to household decisions to tighten spending (i.e., less restaurant dining, where U.S. beef would frequently be consumed) in response to the uncertainty caused by Korea's economic recession (**Figure 4** and **Figure 5**). The availability of cheaper Australian beef because of the Australian dollar's more favorable exchange rate against the Korean *won* also reduced the price-competitiveness of U.S. beef during this period. USDA reported that imports were slowed by the difficulties that importers experienced in securing credit due to the financial squeeze and the weak *won* relative to the U.S. dollar, and by "ample" inventories of U.S. beef sitting in cold storage. It also attributed the slower pace of sales to the lingering negative image of U.S. beef among Korean consumers.²¹

For **2010**, U.S. beef exports to South Korea totaled \$518 million, or 112,757 MT, a 140% increase in value and a 103% increase in quantity over 2009. U.S. beef shipments constituted 32% of total South Korean beef imports, a noticeable increase from the 26% share posted in 2009 (**Figure 3**).

Promotional efforts to rebuild consumer confidence in U.S. beef and much lower retail prices for imported beef than for Korean beef contributed to the continued growth in U.S. beef sales throughout the year (**Figure 4** and **Figure 5**). Since December 2009, the U.S. Meat Export Federation (USMEF) has conducted a "Trust Campaign" to rebuild consumer confidence in U.S. beef using television and newspaper advertisements and other promotional activities. Major Korean "hypermarkets"—superstores that combine a supermarket with a department store—have

²¹ USDA, Foreign Agricultural Service (FAS), South Korea's "Livestock and Products Annual," GAIN Report KS9041, September 1, 2009, pp. 5, 9.

engaged in aggressive marketing efforts that are reported to have increased U.S. beef's share of imported beef sold by these stores. Retail prices for Korean-produced beef on average were 2 to 2½ times more expensive than imported beef. Though U.S. beef sales have increased, USDA reported that "there are still a sizeable percentage of fence sitting consumers who haven't started buying U.S. beef again." To win these consumers back, marketing efforts are being targeted toward this group. Also, while the more upscale restaurants are selling U.S. beef, smaller establishments "are still a bit reluctant to include it on their menus for fear of losing customers." To respond, the USMEF plans additional marketing efforts to reach these smaller restaurants.²²

During the first five months of **2011**, U.S. beef exports to South Korea totaled \$331 million (**Figure 1**) or 76,208 MT (**Figure 2**), a 103% (in value) and a 105% (in quantity) increase over the same period in 2010. U.S. beef shipments represented 37% of Korea's beef imports, another noticeable increase from the 30% share posted in the January-May 2010 period (**Figure 3**). The surge in beef imports not only from the United States but also from Australia responded to the outbreak of foot and mouth disease late in 2010. With hog herds culled significantly, together with some cattle, to prevent its spread, available Korean meat supplies fell. Importers moved quickly to meet demand. U.S. exports increased quickly during the first quarter (**Figure 4** and **Figure 5**). Shipments have since fallen back to the levels seen in the last three quarters of 2010.²³ An industry representative remains "quite bullish" on the Korean market because of strong demand, noting that the strong export sales pace "was not really sustainable."²⁴

Impact of Beef Protests on Bilateral Relations and the KORUS FTA

Although the protests against the beef agreement subsided in the summer of 2008, they have had lingering effects on U.S.-South Korean relations because of their erosion of President Lee's standing early in his term and because of their possible effects on the ratification of the KORUS FTA. The protests damaged the president's political strength and boosted the position of opposition groups that had been demoralized before the candlelight vigils. In the late summer of 2008, Lee's approval ratings recovered from the trough they entered at the height of the protests, but for months they remained at a low level (in the mid-20% to 30% range).²⁵ Thus, the uproar over Lee's decisions on beef effectively ruined his "honeymoon" period to push many of his policy goals. It was not until late 2009 that Lee's poll numbers began to exceed 40% fairly consistently.

Perhaps most significantly for the United States, the beef protests meant that President Lee has lacked the political capital and/or the political will to completely eliminate the beef ban, as the Obama Administration and various Members of Congress have asked. Perhaps for this reason, the

²² USDA, FAS, GAIN Report KS1023, September 13, 2010; GAIN Report KS1003, February 26, 2010, pp. 4-5.

²³ This observation is based on FAS's Weekly Export Sales reports showing lower shipments than recorded in the late January to February 2011 period.

²⁴ U.S. Meat Export Federation, "U.S. Pork, Beef Exports Post Solid May Results, but Market Access Issues Linger," July 13, 2011.

²⁵ See, for instance, *JoongAng Ilbo* (Internet Version in English), "President Lee's Approval Rating Starts to Pick Up," August 25, 2008; Martin Fackler, "South Korea Losing Faith in 'Ceo' Leader and Ally," *The New York Times*, November 1, 2008.

remnants of Korea's beef ban were not linked to the 2010 KORUS FTA negotiations that culminated in the December 3 supplementary agreement. The domestic uproar in Korea following the April 2008 beef deal had increased the perception among many South Koreans that Lee was overly solicitous toward the United States. Had he compromised again on the beef issue in late 2010, it is possible that securing passage of the KORUS FTA through Korea's National Assembly would have become more difficult.²⁶

Beef Access Status after Talks on the Supplemental Agreement

Concluding the 2008 bilateral beef agreement was considered a significant step forward in the U.S. government's 4½-year effort to regain access to South Korea's lucrative beef market for the U.S. cattle and beef processing sectors. It was intended to resolve an issue that some Members of Congress said stood in the way of congressional consideration of legislation to implement the KORUS FTA. While Korea's lifting of the beef ban was widely regarded as a politically necessary condition for the Bush Administration to send this trade agreement to Congress, it has since become a less sufficient condition, because of other opposition that was expressed against the KORUS FTA, particularly over its auto trade provisions.

Positions Heading into Final Talks

Following President Obama's announcement on June 26, 2010, of his intent to present implementing legislation for the KORUS FTA to Congress "in the few months" after the November 2010 G-20 meeting in Seoul, the Administration consulted with Congress and stakeholders on how to resolve outstanding matters related to access for U.S. beef in the South Korean market. Discussions focused on what would constitute full access for U.S. beef, as spelled out in the signed April 2008 protocol.

The issue that U.S. negotiators faced was how and at what pace the United States could get South Korea to accept all U.S. beef, irrespective of the age of the cattle when slaughtered. However, the requirement that U.S. exporters remove specified risk materials suspected of causing mad cow disease during processing was not at issue. At the same time, U.S. negotiators faced pressure to balance this objective with similar negotiating initiatives to expand upon or regain market access for U.S. beef in such important Asian markets as Japan, Taiwan, and China.²⁷

Administration officials continued to state that their objective is "to eventually secure full market access for U.S. beef" that reflects South Korea's recognition that the United States meets OIE standards. However, public statements made by U.S. Trade Representative Ron Kirk and then-

²⁶ As of early August 2011, the Lee government and the ruling Grand National Party were attempting to convene a special session of the National Assembly so that the KORUS FTA could be voted on before the end of the month. However, the opposition Democratic Party was resisting such a move. Hyun-jung Bae, "Korea-U.S. FTA Bill Holds Back August Assembly," *Korea Herald*, August 2, 2011.

²⁷ At present, Japan accepts U.S. beef, veal, beef offal, and veal offal from animals 20 months of age or younger. Taiwan allows the entry of U.S. boneless and bone-in beef, and other specified beef products, from cattle less than 30 months of age that meet specified requirements on being born and/or raised for a minimum time period in the United States. China does not allow the entry of any U.S. beef, beef products, and tallow.

USDA Under Secretary Jim Miller raised the possibility that the Administration might not require achieving this objective before the KORUS FTA is sent to Congress, and instead might seek to secure commitments from South Korea to move in steps toward that goal.²⁸

Senator Baucus, chairman of the Senate Finance Committee (which will consider the Administration's bill to approve and implement the KORUS FTA) stated that he wanted access for all U.S. beef and cuts from cattle of any age as a condition for considering and ratifying the KORUS FTA. His statements stressed that the OIE has determined that U.S. beef from cattle irrespective of age can be safely imported, and that 60 countries now recognize this in accepting U.S. beef. Baucus has continued to reiterate that his objective is to see that U.S. beef access in all markets be based on internationally accepted rules, arguing that allowing an FTA partner such as Korea not to follow OIE guidelines would set a "dangerous precedent."²⁹ Another approach laid out by Senator Grassley, then ranking Member of the Finance Committee, would be to pursue efforts to secure additional beef access "in parallel to the FTA approval process."³⁰

Much of the U.S. cattle and beef industry wants to see the KORUS FTA take effect soon in order to realize the benefit of the reduction in South Korea's 40% tariff on beef muscle cut imports. The industry points to the fact that U.S. beef exports continue to grow, and that the U.S. market share of Korea's beef import market is increasing.³¹ Industry spokesmen expressed some apprehension about losing these gains, if U.S. negotiators push South Korea too quickly for full beef access. Their stance likely reflected a desire to avoid a repeat of the street protests that occurred in May 2008, to preclude a public and official perception that the United States is again pressuring South Korea for a policy change. The U.S. beef sector would view such a scenario as undercutting the aggressive market promotion efforts made since late 2008 to assure Korean consumers of the safety of U.S. beef, which it views as having contributed to the increase in U.S. beef exports. Others also have mentioned that securing tariff reductions for U.S. beef would provide a price advantage with respect to beef supplied by Australia and New Zealand, which are seeking similar tariff cuts as both countries negotiate FTAs with South Korea.

No Change on Beef Issue After Talks

In the negotiations on the supplemental agreement concluded on December 3, 2010, the beef issue reportedly received little discussion as both sides focused on revising the auto provisions. President Obama, in discussing this outcome the next day, indicated that the United States will continue to work toward "ensuring full access for U.S. beef to the Korean market."³²

²⁸ *Inside U.S. Trade*, "U.S. Deliberating on Strategy, Possible 'Beef Triggers' for Korea FTA," August 6, 2010, pp. 1, 24-25.

²⁹ *Inside U.S. Trade*, "Baucus Calls On South Korea To Fully Adhere To OIE Guidelines On Beef," July 23, 2010; BNA, *International Trade Reporter*, "Kirk Says Working for Full OIE Compliance From Korea on Beef; Baucus Seeks Results," August 12, 2010.

³⁰ *Inside U.S. Trade*, "U.S. Deliberating on Strategy, Possible 'Beef Triggers' for Korea FTA," August 6, 2010, p. 25.

³¹ If the agreement had taken effect on January 1, 2010, the reduced tariff of 37.3% would have resulted in a savings of \$14 million to U.S. exporters in the first year. CRS derived this savings, applying the first year's 2.7% tariff reduction to the \$518 million in U.S. beef sales to South Korea in 2010.

³² White House, Office of the Secretary, "Remarks by the President at the Announcement of a U.S.-Korea Free Trade Agreement," December 4, 2010.

Congressional reaction to this outcome was mixed. Senator Baucus expressed “deep disappointment” that the supplemental deal “fails to address Korea’s significant barriers to American beef exports.” He stated his commitment to “right this wrong” and to work with the Administration to ensure that ranchers “are not left behind.” Two months later, Senator Baucus said he will not support the KORUS FTA until South Korea opens up its beef market. A few other Senators, though concerned with the lack of progress on beef, viewed the deal positively and welcomed the prospect for considering the KORUS FTA in 2011.³³ Meat industry groups again expressed support for this trade agreement that they expect over time will significantly increase their exports to South Korea, and urged Congress to move quickly to ratify it. Beef interests, also supportive, called for continued efforts to secure full market access.³⁴

Memories of the size and intensity of the 2008 anti-beef agreement protests in South Korea appear to have directly influenced the position taken on the beef issue by Korean negotiators. Reflecting this political sensitivity, they reportedly rejected any discussion on this matter in the negotiations held in early November leading up to the summit between Presidents Obama and Lee and in the final talks leading to the supplemental agreement. Their position was that this issue “did not fall under” the FTA concluded in 2007. Since then, South Korea’s trade minister has confirmed that there will be no more discussions on ending the age limits of U.S. cattle slaughtered for beef. This stance was affirmed by South Korea’s ambassador to Washington in late January 2011.³⁵

Administration’s Subsequent Commitment

Seeking to move closer toward submitting the KORUS FTA to Congress for consideration, the Administration on May 4, 2011, announced two measures it will take on the U.S. beef access issue. In a letter to Senator Baucus, USTR’s Ron Kirk committed to request consultations with South Korea on the “full implementation” of the protocol (e.g., opening Korea’s market “to all ages and all cuts of U.S. beef”) as soon as this trade agreement takes effect. The letter referenced one specific provision stipulating that bilateral consultations on the interpretation or application of the protocol’s terms “shall be held within seven days” of a request. USDA also announced a \$1 million award to the U.S. Meat Export Federation (USMEF) to be used in 2011 to promote U.S. beef sales in South Korea, and its intent to consider future funding requests from the USMEF to implement its planned five-year market beef promotion strategy in this key market. Senator Baucus welcomed both steps, stating that he will support the KORUS FTA and will work with the

³³ Senate Finance Committee, “Baucus Deeply Disappointed With Announcement on Korea Trade Deal, Commits to Keep Fighting for American Ranchers,” December 3, 2010; Senate Agriculture Committee, “Sen. Chambliss Statement on U.S.-South Korea Free Trade Agreement,” December 3, 2010; Senator Grassley, “Conference Call with Farm Broadcasters,” December 7, 2010; *Washington Post*, “Senator’s objection may slow trade pact,” February 3, 2011, p. A4.

³⁴ Meatingplace.com, “U.S.-Korea FTA deal leaves beef unchanged, phases out tariffs,” December 6, 2010; Ibid., National Cattlemen’s Beef Association; American Meat Institute, “AMI Statement on Finalized U.S. Free Trade Agreement with South Korea,” December 3, 2010.

³⁵ *Inside U.S. Trade*, “Korean Negotiators Refused To Engage On Beef Issue In Seoul,” November 19, 2010; *Washington Trade Daily*, “The KorUS Supplemental Agreement,” December 6, 2010, p. 3; *Washington Post*, Political Economy Blog, “Obama, Lee outlined U.S.-Korea trade deal in Seoul, official says,” December 6, 2010; Bloomberg, “South Korea’s Kim Rules Out Negotiations on U.S. Beef Imports,” December 6, 2010; *Inside U.S. Trade*, “Baucus to Oppose Korea FTA Unless More Progress Made on Beef Issue,” December 10, 2010, p. 3; *International Trade Daily*, “Korea Has No Plans to Discuss Beef Prior to Action on FTA, Ambassador Says,” February 1, 2011.

Administration on a package of trade measures that includes all three FTAs and renewing trade adjustment assistance and trade preference programs.

Author Contact Information

(name redacted)
Specialist in Agricultural Policy
[redacted]@crs.loc.gov, 7-....

(name redacted)
Specialist in Asian Affairs
[redacted]@crs.loc.gov, 7-....

EveryCRSReport.com

The Congressional Research Service (CRS) is a federal legislative branch agency, housed inside the Library of Congress, charged with providing the United States Congress non-partisan advice on issues that may come before Congress.

EveryCRSReport.com republishes CRS reports that are available to all Congressional staff. The reports are not classified, and Members of Congress routinely make individual reports available to the public.

Prior to our republication, we redacted names, phone numbers and email addresses of analysts who produced the reports. We also added this page to the report. We have not intentionally made any other changes to any report published on EveryCRSReport.com.

CRS reports, as a work of the United States government, are not subject to copyright protection in the United States. Any CRS report may be reproduced and distributed in its entirety without permission from CRS. However, as a CRS report may include copyrighted images or material from a third party, you may need to obtain permission of the copyright holder if you wish to copy or otherwise use copyrighted material.

Information in a CRS report should not be relied upon for purposes other than public understanding of information that has been provided by CRS to members of Congress in connection with CRS' institutional role.

EveryCRSReport.com is not a government website and is not affiliated with CRS. We do not claim copyright on any CRS report we have republished.