

CRS Report for Congress

Received through the CRS Web

Department of Homeland Security: Organization Chart

Sharon S. Gressle
Specialist in American National Government
Government and Finance Division

Summary

Although the Department of Homeland Security has been operational since January 2003 (under P.L. 107-296; H.R. 5005), due to the scope and complexity of the functions and responsibilities, the departmental components continue to be refined and realigned. The organization chart in this report is based on statutory language, reorganization plans that have been promulgated, and information from the department. Although the department has a website, the charts it presents are not yet fully representative. The report will be updated and the chart revised as events warrant.

The Department of Homeland Security (DHS) was created through P.L. 107-296.¹ Under the Act, the Administration was required to submit a reorganization plan to Congress within 60 days of enactment.² A plan was presented by the White House through a news release on November 25, 2002.³ A modification to the plan, dated January 30, 2003, was promulgated.⁴

The organization chart in this report is illustrative and not intended to be an official version. It has been developed for the purpose of providing a graphic representation of the statutory mandates and the administrative refinements pursuant to the statute. The department does provide a preliminary chart on its website.⁵ That chart provides a structure featuring the Office of the Secretary and the primary organizations within the department with a minimum of detail. It is expected that a more detailed chart will be issued.

¹ Homeland Security Act of 2002; P.L. 107-296; Nov. 25, 2002; 116 Stat. 2135. The effective date of the act was Jan. 24, 2003.

² Sec. 1502.

³ See [http://www.dhs.gov/interweb/assetlibrary/reorganization_plan.pdf].

⁴ See [<http://www.dhs.gov/dhspublic/display?theme=47&content=421>].

⁵ Access the chart through [<http://www.dhs.gov/dhspublic/display?theme=10&content=11>].

In most departmental organizational charts, the Deputy Secretary, who acts as the first assistant to the Secretary, appears immediately adjacent to the Secretary. It should be borne in mind that the DHS Deputy Secretary has specific responsibilities assigned with regard to three offices created by the statute and that those functions are distinct from the Office of the Secretary.⁶

Also, the offices and activities on the far right of the chart below the Deputy Secretary represent a grouping that could just as well have been put directly under the Secretary. For example, the Transportation Security Oversight Board is to be chaired by the Secretary.⁷ Neither the statute nor the reorganization plan indicate whether the board will be within the Office of the Secretary or the Directorate of Border and Transportation Security.

This chart differs from charts provided by the department. For example, there are positions that have been created in the department which were not included in the statute. For instance, under the Directorate for Management, the department has established positions for management of administrative matters, security, and procurement. On the other hand, the available departmental charts provide no details for two of the directorates: Information Analysis and Infrastructure Protection or Emergency Preparedness and Response.

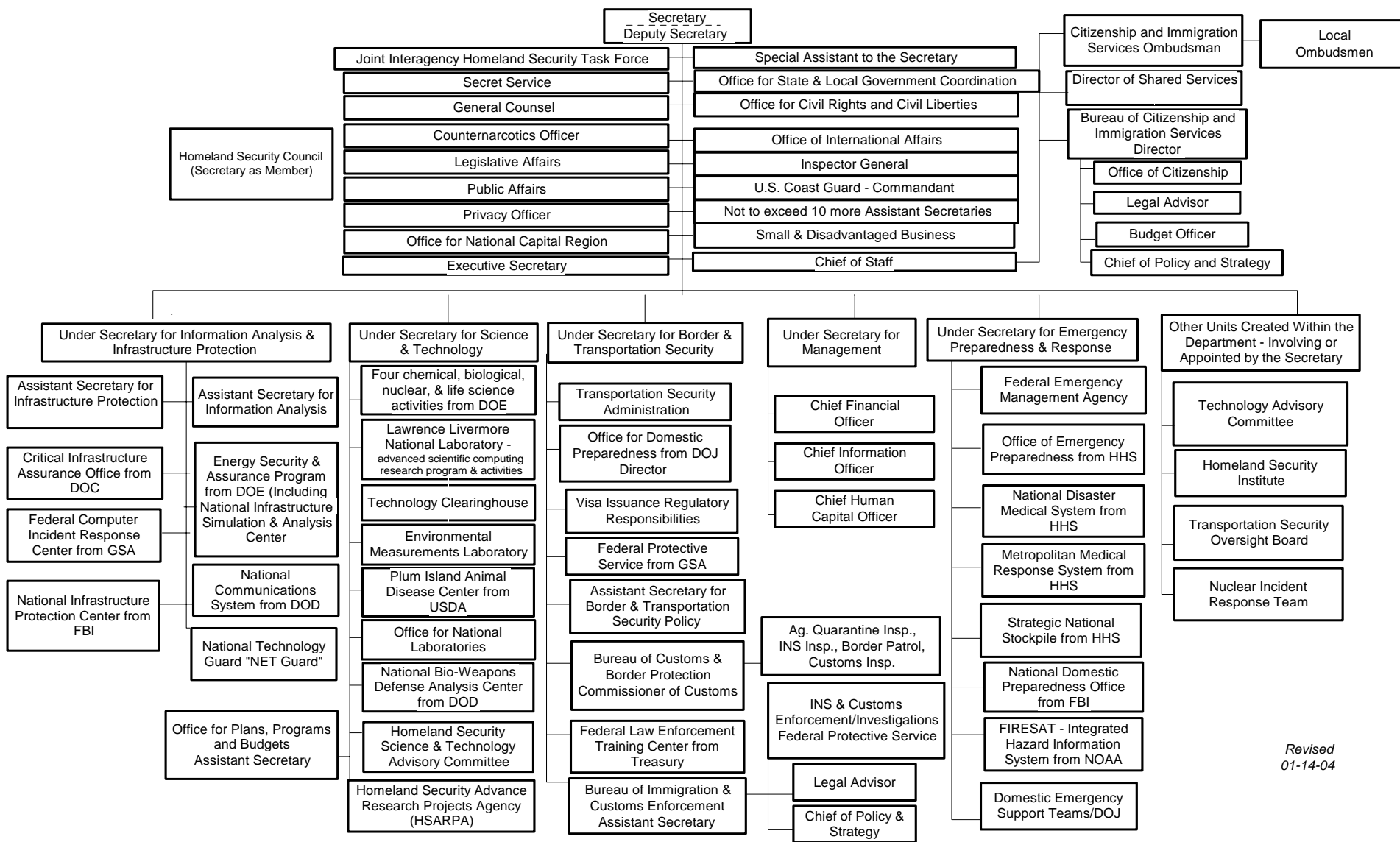
With these caveats taken into consideration, it is hoped that the chart will provide insight as to how the structure of the department may look.⁸ Further insight may be gained through a reading of the CRS Report RL31751, *Homeland Security: Department Organization and Management — Implementation Phase* and CRS Report RL31677, *Filling Presidentially Appointed, Senate-Confirmed Positions in the Department of Homeland Security*, by Henry Hogue. The reports offer several approaches for looking at the department from the point of view of offices created, transferred, and eliminated. The former provides a timetable for implementation of the statute, as amended. The latter provides a similar organization chart, with the added features of identifying which positions require confirmation and providing the names of the incumbents.

⁶ Sec. 451, Sec. 452, and Sec. 475.

⁷ Sec. 426.

⁸ The author appreciates the support of Patricia McLaughry of the CRS Office of Legislative Information in the design and production of the chart.

Department of Homeland Security — Organization Chart



Revised 01-14-04