

# CRS Report for Congress

Received through the CRS Web

## **Current Economic Conditions and Selected Forecasts**

**Updated August 20, 2003**

Gail Makinen  
Economic Policy Consultant  
Government and Finance Division

Anne Vorce  
Economist  
Government and Finance Division

# Current Economic Conditions and Selected Forecasts

## Summary

U.S. real GDP has been positive for 7 consecutive quarters and the economy is considered to be in an “expansion” phase. As of the second quarter 2003, inflation-adjusted growth was 3.9% above its previous high at the end of the 1991 - 2001 expansion. Real growth picked up in the second quarter to 2.4% from 1.4% (quarter-quarter, annualized). Most forecasters expect growth to accelerate in the second half.

Formally confirming the good news, the National Bureau of Economic Research (NBER), recently declared that the recession which began in March 2001 ended in November 2001.<sup>1</sup> The recession lasted 8 months, which is slightly shorter than the postwar average (10 months). The NBER’s decision was based importantly on trends in inflation-adjusted GDP, personal income and sales, all of which had started to turn upward again during the fourth quarter 2001. As usual, the NBER waited awhile to make its determination until it was confident of positive developments.

Yet the rebound in growth since the end of the recession has not translated into higher payroll employment. Payroll employment has continued to contract (- 2.7 million since February 2001). The unemployment rate has risen and now stands at 6.2% (July). Many have referred to this as a “jobless recovery”.

There are positive elements of the economic picture:

(1) A pick-up in output at the same time as employment is declining means that productivity (or output per worker) is increasing. As we saw in the 1990s, productivity growth is the key to raising our standard of living and is not necessarily associated with weak labor markets over time. We eventually experienced *both* rapid productivity and strong employment growth as the recovery broadened and deepened throughout the decade. In the short run while adjustment is taking place, however, there is a human toll from the continuing payroll employment losses.

(2) Inflation decelerated in the second quarter. This has raised concerns about deflation. A low inflation environment is favorable for economic activity.

(3) While overall investment has not yet recovered, information technology-related investment has been on the rise since early 2002.

Most economists expect the economy to pick up in the second half, with growth above 3.5%. The unemployment rate is expected to show little change until businesses are sufficiently confident of conditions ahead so that they increase hiring. Inflation is expected to remain low as long as considerable slack remains in the economy, although near term “headline” inflation may reflect new rises in oil prices. Fiscal and monetary policies have both been eased since 2001 and the easing has continued into this year. They are having a positive effect on spending. The external deficit is large and expected to remain so. This report will be updated monthly.

---

<sup>1</sup> The NBER is the nonpartisan group that dates U.S. business cycles. For its July 17, 2003, announcement of the end of the 2001 recession, see [<http://www.nber.org/cycles>].

## Contents

Current Economic Conditions .....	1
Overview .....	1
Monetary Policy .....	3
Details .....	3
GDP .....	3
Labor Markets .....	4
Inflation .....	5
The U.S. Foreign Trade Deficit .....	7
The U.S. Dollar .....	8
Posture of Fiscal and Monetary Policy .....	9
Fiscal Policy .....	9
Monetary Policy .....	9
Economic Forecasts, 2002-2003 .....	12
Special Topics .....	14
Accounting for GDP Growth .....	14
Promotion of Economic Growth: The Importance of Saving .....	15

## List of Figures

Figure 1. Real Dollar Exchange Rate .....	8
Figure 2. Yield on Selected U.S. Treasury Securities and Federal Funds (%) .....	11

## List of Tables

Table 1. The Growth Rate of Real GDP v. Final Sales, 1991 - 2003 (%) .....	4
Table 2. Civilian Unemployment Rate, 1991 - 2003 .....	4
Table 3. Rate of Change in the Consumer Price Index (CPI), 1992 - 2003 (%) ..	5
Table 4. Rate of Change in the GDP Deflators, 1992 - 2003 .....	6
Table 5. Selected GDP Price Indexes, 2002 - present .....	6
Table 6. Rate of Change in Labor Costs, 1992 - 2003 .....	7
Table 7. U.S. Foreign Trade Deficit, 1988 - 2003 .....	8
Table 8. Alternative Measures of Fiscal Policy .....	10
Table 9. The Growth Rates of the Monetary Aggregates .....	10
Table 10. Economic Forecasts 2003 - 2004 .....	13
Table 11. Accounting for GDP Growth: 1994 through 2003 .....	14
Table 12. U.S. Saving By Sector .....	17

# Current Economic Conditions and Selected Forecasts

## Current Economic Conditions

### Overview

The U.S. economy is considered to be in an expansionary phase again because it has more than recovered its recession-related losses in real GDP. This situation was formally recognized on July 17 by the National Bureau of Economic Research (NBER), which declared that the recession starting in March 2001 had ended in November 2001. As of the second quarter 2003, U.S. real GDP was 4.6% above its recession low point in the third quarter 2001, and had grown 3.9% beyond its previous high at the end of the 1991-2001 expansion. U.S. real growth has now been positive for 7 consecutive quarters.

According to the most recent GDP report, growth in the second quarter 2003 accelerated by a full percentage point to 2.4% from 1.4% in each of the two previous quarters (quarter - quarter, at a seasonally adjusted annualized rate). Growth excluding inventories looked even more buoyant in the second quarter.<sup>2</sup> Contributions to GDP came mainly from consumption and to a lesser extent from defense spending, but other activities boosted growth as well. Business investment increased: investment in information technology was positive for the 6th quarter in a row and has now exceeded its previous peak; investment in structures was positive for the first time in almost two years. A widening trade deficit was a drag on growth.

---

<sup>2</sup> The accounting framework that governs the calculation of GDP isn't always straightforward. In the GDP accounting rules, inventories subtract from growth if they are drawn down more in a particular quarter. However, in some circumstances, the drop in inventories might point to stronger growth ahead. For example, if domestic demand (defined as GDP other than inventories) accelerates at the same time inventories are drawn down, the standard interpretation is that growth will probably be higher in the near future. The reason why a pick-up is anticipated would be at least technical: with demand on the rise, inventories will not be sufficient after a while and new production will eventually be required to keep up with demand. New production increases GDP, according to the accounting framework. A pick-up may also signal underlying acceleration in the economy. Based on this standard interpretation, recent second quarter data may signal stronger growth in the months ahead, which would be consistent with consensus forecasts. Caution must be exercised however because of the complexities of the U.S. economy.

Yet, despite the recovery in growth, concerns remain. The rebound has not translated into an upswing in payroll employment.<sup>3</sup> Employment has continued to

Many people are referring to the present expansion as a “jobless recovery” and parallels have been made to the “jobless recovery” after the 1990-91 recession. How do the two compare?

Payroll employment losses in the present expansion are larger than in 1991-92, measured from several important turning points in the business cycle:

- Between the start of the recession and now (March 2001- July 2003), payroll employment has declined by 2.7 million. At the same point in the 1991 recovery (March 1992), employment had declined by over 1 million.

- By this point in the previous recovery, payroll employment had started to head up again (+663,000 as of November 1992, 20 months after the end of the recession in March 1991). In contrast, payroll employment has continued to decline in the current expansion (-1 million since the recession ended in November 2001).

contract and the unemployment rate has risen further, even as growth picked up. Since the start of the recession in March 2001, payroll employment has fallen by around 2.7 million people. Employment levels in July 2003 were around those in October 1999. The unemployment rate stood at 6.2% in July, well above the 3.8% low of the 1990s expansion.

Measured inflation continues to be low. The broadest measure of inflation for the economy, the GDP price index, decelerated from 2.4% in the 1st quarter 2003 to +1.0% in the 2nd quarter 2003. The Consumer Price

Index (CPI) followed a similar path. It fell in April, was unchanged in May, and rose slightly in June and July. This pattern has been heavily influenced by sharp movements in the price of energy. Some economists fear that the recent U.S. experience may mean that a period of deflation lies ahead which could have a negative effect on growth and employment.

The most recent data are difficult to interpret. The key questions are: to what extent does recent slow growth reflect continuing adjustment in the business sector, particularly in the telecommunications industries, but also in transportation-related industries affected by security concerns; and/or normal cyclical adjustment in the aftermath of a contraction? Alternatively, the pattern during the 4th quarter 2002 and the first half of 2003 may simply reflect the typical ups and downs of quarterly growth. Growth is not an even process. Even during the fast-growing years of the 1990s, a quarter of rapid growth often followed a quarter of slow growth.<sup>4</sup>

---

<sup>3</sup> The other major employment survey by the Bureau of Labor Statistics (BLS) indicates that employment has risen. According to the BLS household survey, employment has increased by 1.7 million during the same period.

<sup>4</sup> In July, the Bureau of Economic Analysis (BEA) usually publishes 3-year revisions of the GDP figures and its components (known as the “national accounts”). This year, however, BEA will not publish revisions until December, when it will incorporate them into more comprehensive benchmark revisions. The revisions can often alter the picture of the (continued...)

## Monetary Policy

Beginning in January 2001, Federal Reserve policy has shifted to one of ease. Since then, the Federal Open Market Committee (FOMC) of the Federal Reserve System has lowered the federal funds target rate in 13 steps by a cumulative 550 basis points (5.50 percentage points), from 6.5% to, most recently, 1.0% on June 25, its lowest level since April 1961. The June FOMC decision was related to continuing growth disappointment and the need to add further support to economic activity from monetary policy. Inflationary pressures remain subdued, and concerns have turned to disinflation. The FOMC did not change its monetary policy stance at its most recent meeting on August 12..

## Details

**GDP.** To understand the most recent macroeconomic developments, it is important to understand the context over the medium-run. The growth rate of GDP since 1991 is shown in **Table 1**. Its most notable feature is that the growth rate of GDP averaged more than 4% per year during the second half of the recent expansion. GDP growth began to slacken during the second half of 2000 and actually contracted during the first 3 quarters of 2001 at an annual rate of 0.8%. This trend was reversed during the fourth quarter, when GDP grew positively, at an annual rate of 2.7%. The economy continued to expand during the 4 quarters of 2002, when real GDP grew at annual rates of 5.0%, 1.3%, 4.0%, and 1.4%, respectively. In 2003, real GDP increased by an annualized rate of 1.4% in the first quarter, and 2.4% in the second.

The growth in GDP since the fourth quarter 2001 has not yet translated into a comparable pick up in production in part because of the inventory cycle. However, this should not be worrisome. As **Table 1** illustrates, GDP rose far less than Final Sales in 2001 because inventory liquidation was on-going over the course of 2001. Inventory liquidation is normally a good sign, although in accounting terms, it subtracts from GDP. When inventories are liquidated, additional sales will come from new production and this will assist the recovery. We saw the process at work in 2002, when inventories were built up again after being drawn down in 2001. GDP rose by 2.9% (4th-quarter-4th quarter), but the annualized growth of final sales rose by 2.5%. The difference between the two was the rise in inventories. Inventories were liquidated again in the first two quarters of 2003 as production could not keep up with the demand for goods and final sales accelerated, rising at annual rates of 2.3% and 3.2%, respectively.

---

<sup>4</sup> (...continued)

economy. For example, in the late 1990s, GDP revisions indicated that the economy was considerably stronger than had been thought.

**Table 1. The Growth Rate of Real GDP v. Final Sales, 1991 - 2003 (%)**

	1991	1992	1993	1994	1995	1996	1997	1998	1999	2000	2001	2002	2003
<b>GDP</b>													
Year - Year	-0.5	3.0	2.7	4.0	2.7	3.6	4.4	4.3	4.1	3.8	0.3	2.4	-
4thQ - 4thQ	0.9	4.0	2.5	4.1	2.3	4.1	4.3	4.8	4.3	2.3	0.1	2.9	2.3
<b>Final Sales</b>													
Year - Year	-0.2	2.8	2.6	3.4	3.1	3.6	4.0	4.2	4.3	3.7	1.5	1.8	-
4thQ - 4thQ	0.2	4.2	2.6	3.2	2.9	3.9	4.0	4.7	4.2	2.6	1.6	1.7	2.5

Source: U.S. Department of Commerce.

Note: 2003 is 2<sup>nd</sup> quarter 2003-2003.

**Labor Markets.** The civilian unemployment rate fell from its cyclical high in June 1992 (7.8%) to a low of 3.8% in April 2000, as shown in Table 2. At 3.8%, the unemployment rate was at a 30-year low. With a weakening of growth and a contraction followed by a modest recovery, the unemployment rate reversed course and rose. After moving in a narrow band mainly between 5.6% and 5.9% since the end of 2001, the unemployment rate increased sharply beginning in March 2003. It stood at 6.4% in June and eased slightly to 6.2% in July.

Since the recession began in March 2001, payroll employment has fallen by approximately 2.7 million. It is important to understand that this is a net concept. Jobs have continued to be created during this period, but job creation has not been sufficient to offset the loss in jobs elsewhere. On balance, this has translated into a net decrease in employment. The U.S. economy has remained dynamic, even though this is not readily apparent from the aggregate figures. Following a contraction, labor markets typically improve with a lag after growth picks up because employers are reluctant to hire until they see that an economic recovery is firmly in place.

**Table 2. Civilian Unemployment Rate, 1991 - 2003**

(% , seasonally adjusted)

	J	F	M	A	M	J	J	A	S	O	N	D
1991	6.4	6.6	6.8	6.7	6.9	6.9	6.8	6.9	6.9	7.0	7.0	7.3
1992	7.3	7.4	7.4	7.4	7.6	7.8	7.7	7.6	7.6	7.3	7.4	7.4
1993	7.3	7.1	7.0	7.1	7.1	7.0	6.9	6.8	6.7	6.8	6.6	6.5
1994	6.6	6.6	6.5	6.4	6.1	6.1	6.1	6.0	5.9	5.8	5.6	5.5
1995	5.6	5.4	5.4	5.8	5.6	5.6	5.7	5.7	5.6	5.5	5.6	5.6
1996	5.6	5.5	5.5	5.6	5.6	5.3	5.5	5.1	5.2	5.2	5.4	5.4
1997	5.3	5.2	5.2	5.1	4.9	5.0	4.9	4.8	4.9	4.7	4.6	4.7
1998	4.6	4.6	4.7	4.3	4.4	4.5	4.5	4.5	4.6	4.5	4.4	4.4
1999	4.3	4.4	4.2	4.3	4.2	4.3	4.3	4.2	4.2	4.1	4.1	4.0
2000	4.0	4.1	4.0	3.8	4.1	4.0	4.1	4.1	4.0	3.9	4.0	3.9
2001	4.1	4.2	4.2	4.4	4.4	4.6	4.6	4.9	5.0	5.4	5.6	5.8
2002	5.6	5.6	5.7	5.9	5.8	5.8	5.8	5.8	5.7	5.8	5.9	6.0
2003	5.7	5.8	5.8	6.0	6.1	6.4	6.2					

Source: Department of Labor.

An interesting and perhaps important feature of the present economic recovery is the divergence between the two main measures of employment. It is well-known that the payroll survey shows that job losses (some 2.7 million) have increased despite the rise in GDP growth so far in this expansion. Less well-known is the fact that the other main measure of employment (the household survey of the Bureau of Labor Statistics) indicates that employment has increased by 1.7 million since its low point in January 2002. Is the difference between the two measures of employment a statistical problem? Experts do not know. The Census Bureau's annual adjustment to population estimates in January 2003 boosted household survey employment that month by some 575,000, but no adjustments were made to previous months. Some economists also note that self-employment trends are more accurately captured by the household survey and that household employment trends have often been reliable forward indicators of coming improvement in payroll employment in the aftermath of a recession.

**Inflation.** The U.S. inflation performance has been remarkable over the past 10 years. The inflation rate decelerated throughout most of the expansion in the 1990s, as Tables 3 and 4 illustrate. Toward the end of the expansion in 2000, the inflation rate accelerated, but the pick up was not noticeably different from earlier years of the cycle.

During the 1991-2001 expansion, the inflation rate increased more slowly on average than at any time since the early 1960s. At the same time, growth was stronger and the unemployment rate lower than experience would have predicted. Inflationary pressures slowed further with the recession. Moreover, the deceleration in inflation over the 1990s occurred even as the pace of growth accelerated. In the postwar experience, this combination of developments is unusual. The rates of growth and inflation have not typically moved in the opposite direction, particularly when the unemployment rate was sustained at a relatively low level close to 4.0% in what was generally considered to be an economy at or above full employment.

With the start of the recession in March 2001, inflation decelerated, excluding energy prices. The increase in consumer prices (the Consumer Price Index or CPI) slowed on a year-year basis from 2.8% in 2001 to 1.6% in 2002. The rate of increase in the GDP deflator, the broadest measures of inflation in the economy, decelerated from 2.3% in 2000 to 2.0% in 2001 and 1.3% last year, on a fourth quarter-fourth quarter basis.

**Table 3. Rate of Change in the Consumer Price Index (CPI), 1992 - 2003 (%)**

	1992	1993	1994	1995	1996	1997	1998	1999	2000	2001	2002	2003
<b>Dec. over Dec.</b>	2.9	2.7	2.7	2.5	3.3	1.7	1.6	2.7	3.4	1.6	2.4	2.1
<b>Excluding food and energy</b>	3.3	3.3	2.6	3.0	2.6	2.2	2.4	1.9	2.6	2.7	1.9	1.5
<b>Year Over Year</b>	3.0	3.0	2.6	2.8	3.0	2.3	1.6	2.2	3.4	2.8	1.6	-
<b>Excluding food and energy</b>	3.7	3.3	2.8	3.0	2.7	2.4	2.3	2.1	2.4	2.6	2.4	-

Source: Department of Labor.

Note: 2003 is latest data, July 2002- July 2003.

The exception to the deceleration story is the CPI measured on a December - December basis. It rose by 2.4% during 2002, versus an increase of 1.5% in 2001. Despite acceleration in 2002, the rate of increase remained below the pace during most of the 1990s expansion. The acceleration continued through March 2003 (an increase of 3.0% as measured from March 2002 to March 2003). However, measured on a month-month basis, the CPI fell absolutely in April, was unchanged in May and rose in June and July. Overall, during the second quarter, the CPI

declined absolutely at an annual rate of 0.7%, based on the three month measurement calculated by the Bureau of Labor Statistics. Measured on a year-year basis, the CPI rose by 2.1% from July 2002 to July 2003, a slowdown from the year-year pace in the first quarter. "Core prices" (i.e., prices excluding food and energy) rose by 1.5% on a July 2002-2003 basis. While this pattern reflects, in large measure, the behavior of energy prices, some economists fear that it portends the on-set of deflation. This, they translate into falling GDP and rising unemployment.

**Table 4. Rate of Change in the GDP Deflators, 1992 - 2003**

(%, 4Q-4Q)

	1992	1993	1994	1995	1996	1997	1998	1999	2000	2001	2002	2003
<b>Implicit Price Deflator</b>	2.3	2.4	2.1	2.1	1.9	1.8	1.1	1.6	2.3	2.0	1.3	1.5
<b>Chain Type Price Index</b>	2.3	2.4	2.1	2.1	1.9	1.8	1.1	1.6	2.3	2.0	1.3	1.5

Source: U.S. Department of Commerce.

Note: 2003 is 2<sup>nd</sup> quarter 2002-2003.

In its past two public statements,<sup>5</sup> the FOMC has indicated concern over disinflation. **Table 5** presents some of the indicators which have prompted the FOMC statements.

**Table 5. Selected GDP Price Indexes, 2002 - present**

(% change, quarter-quarter, annualized)

	2002				2003	
	1q	2q	3q	4q	1q	2q
<b>GDP less food and energy</b>	1.6	1.5	1.1	1.6	1.8	0.5
<b>Gross domestic purchases</b>	1.2	2.3	1.2	1.8	3.4	0.3
<b>Personal consumption expenditures</b>	1.1	2.7	1.7	1.8	2.7	0.9

Source: Department of Commerce

With the favorable inflation performance of the economy, economists think that several forces keeping a lid on inflation may be at work:

- In the short-run, the acceleration in productivity improvement is regarded by some economists as an important factor in the slowdown in inflationary pressure at the same time growth picked up during the 1991-2001 expansion. Since 1995, nonfarm business productivity has increased on average by 2.6% annually.<sup>6</sup> In 2002, productivity rose by 5.4% (annual average of each quarter's growth) and by 4.8%, fourth quarter - fourth quarter. So far in 2003, first quarter productivity was 2.6% and second quarter productivity was 3.8% above comparable periods in 2002. To put recent developments into perspective, the

<sup>5</sup> June 25 and August 12.

<sup>6</sup> Nonfarm business productivity is the measurement of output per hour.

average annual rate of increase since 1995 is double the average annual rate from 1973 to 1995 (2.6% versus 1.3%). In concrete terms, this important change means that the same amount of labor will produce higher output. Over time, a change of this nature will mean substantially stronger growth in per-capita income and a higher standard of living.

- Unit labor costs have been decelerating or falling over the past two years, although one measure suggests a modest pick-up in the first quarter, as shown in **Table 6**. With more output produced for each hour worked, firms have their employee cost per unit of output reduced. Recent trends reflect the pick-up in productivity growth and slowdown in basic labor costs during the recession plus continuing labor market weakness in the recovery-expansion phase to-date. Employee cost trends are also measured in the Employment Cost Index (ECI). The ECI for private industry accelerated from 1995 through most of 2001 and early 2002, but began to decelerate in the course of 2002 as a result of weakened labor market pressures. In the first quarter of 2003, however, it accelerated from the third and fourth quarters due to increases in both the (1) wage and salary and (2) benefits components. However, both components eased considerably in the second quarter and the first quarter may have been a blip.
- Technological advances have led to declining prices for many goods that use certain information technology components as inputs.

**Table 6. Rate of Change in Labor Costs, 1992 - 2003**  
(in percentages)

	1992	1993	1994	1995	1996	1997	1998	1999	2000	2001	2002	2003
<b>Unit Labor Costs</b>	0.4	1.5	1.1	1.5	0.7	1.1	2.4	1.4	4.9	-0.5	-1.6	-1.0
<b>Employment Cost Index</b>	3.5	3.6	3.1	2.6	3.1	3.4	3.5	3.4	4.4	4.2	3.2	3.5

Source: U.S. Department of Labor. Note: Unit labor costs are for nonfarm business, 4th quarter-4th quarter. The Employment Cost Index is for private industry, December - December. For 2003, they are the rates for the years ending in the 2nd quarter (unit labor costs); and in June (ECI).

**The U.S. Foreign Trade Deficit.** The U.S. foreign trade deficit (net imports), as shown in **Table 7**, recorded a continued and dramatic fall from 1988 through 1991.<sup>7</sup> In each of these years the trade deficit declined as export growth exceeded import growth. During 1992 the

---

<sup>7</sup> The foreign trade deficit figure analyzed above is different from the headline trade deficit reported in the press and another trade deficit ratio often used by economists, although they are all related and can be reconciled. In this report, the "trade deficit" refers to exports and imports from the U.S. national accounts, which are the basis for the GDP figures. The underlying data for the figures cited above are released quarterly and annually and are on an inflation-adjusted basis ("real"). In contrast, foreign trade figures frequently quoted in the press are different because they released monthly rather than quarterly, not adjusted for inflation and are defined slightly differently otherwise. These figures are usually not compared to GDP. To make matters even more confusing, economists often refer by convention to the quarterly trade figures known as the current account. The current account position includes components not in the figures above and is not adjusted for inflation. For 2002, the current account deficit was approximately 4.8% of nominal GDP.

trade deficit began to grow as a fraction of GDP and is now running at a rate in excess of its previous high in 1987. During the first half of 2003, it was 5.6% of GDP (in inflation-adjusted terms). The increase in the U.S. foreign trade deficit during 1992–2003 reminds us that the United States still receives a substantial net inflow of capital from abroad.

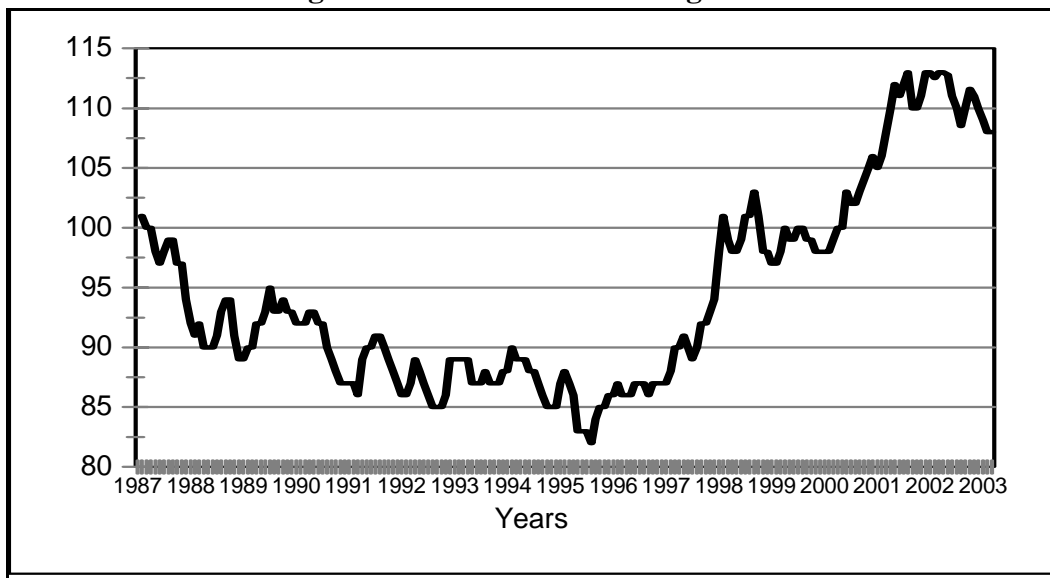
**Table 7. U.S. Foreign Trade Deficit, 1988 - 2003**  
(as a percent of GDP)

1988	1989	1990	1991	1992	1993	1994	1995	1996	1997	1998	1999	2000	2001	2002	2003
1.8	1.2	0.8	0.2	0.3	0.8	1.2	1.0	1.1	1.4	2.6	3.6	4.3	4.4	5.2	5.6

Source: Department of Commerce. Note: Percentages measure the real trade deficit divided by real GDP.  
2003 = 1<sup>st</sup> half.

**The U.S. Dollar.** Figure 1 records the movement in the foreign exchange value of the dollar measured against a trade-weighted index of the currencies of many U.S. trade partners over the past 15 years. After hitting a low in the second quarter 1995, the dollar rose in real or inflation-adjusted terms (that is, it appreciated) by over 34% to its peak in February 2002. From then until mid-August 2003, it depreciated by more than 9% on an inflation-adjusted basis. It has appreciated slightly since then. The dollar is now around its May 2000 level and remains well above its 1995 low (24%) even after the depreciation. The dollar has depreciated by about the same percentage on a nominal basis (that is, not adjusted for inflation).

**Figure 1. Real Dollar Exchange Rate**



Source: The Board of Governors of The Federal Reserve System.

The dollar has shown more movement against the major world currencies than the broad trade-weighted index described above suggests.<sup>8</sup> From its high in February 2002 until August 2003, the dollar has depreciated by nearly 16% against an index consisting of the major currencies that circulate, adjusted for inflation. After depreciating steadily against these currencies since February 2002, the dollar reversed course in June 2003 and appreciated by 2.8% since then. In the Federal Reserve's weighted currency index, the euro area is slightly more heavily weighted in U.S. trade than Canada. On a nominal basis, the dollar has depreciated against the euro by 24% since late April 2002, although it has appreciated by 5.0% since mid-June. The dollar has fallen by over 12% against the Canadian dollar since January 2002, including some dollar appreciation since mid-June.

## Posture of Fiscal and Monetary Policy

The course of GDP growth can respond significantly to changes in fiscal and monetary policy.

### Fiscal Policy

The posture of fiscal policy depends on how it is measured. A generally accepted method is to examine the ratio of the structural or full employment budget deficit to full employment GDP. When that is done, as shown in **Table 7**, fiscal policy during 2002 was expansionary as the full employment surplus fell from 0.8% to a deficit of 1.5% of potential GNP. An alternative, although inferior measure, is the ratio of the actual budget deficit to actual GDP. When examined, fiscal policy in 2002 was also expansionary as the actual surplus fell from 1.3% to a deficit of 1.5% of actual GDP.

### Monetary Policy

Traditionally, the posture of monetary policy has been judged either by the growth of the monetary aggregates or by movements in interest rates.<sup>9</sup> The three monetary aggregates have all responded positively to the easing of monetary policy. Their annualized rates of growth over the first seven months of 2003 are substantially higher than during 2002.

---

<sup>8</sup> In **Figure 1**, the dollar is measured against an index of the currencies of many of the major trade partners of the United States weighted according to the proportion of trade. This is referred to as the "broad dollar index". The Board of Governors also publishes the exchange rate of the dollar with the currencies of smaller groups of countries or individual countries.

<sup>9</sup> For a more comprehensive discussion of monetary policy, see CRS Report RL30354, *Monetary Policy: Current Policy and Conditions*, by Gail Makinen and Anne Vorce.

**Table 8. Alternative Measures of Fiscal Policy**

(\$ in billions per fiscal year)

	1990	1991	1992	1993	1994	1995	1996	1997	1998	1999	2000	2001	2002
<b>Standardized Budget Deficit</b>	\$121	\$147	\$185	\$185	\$141	\$144	\$99	\$73	\$37	\$ 3	\$+99	\$+80	\$153
<b>Full Employment GDP</b>	5,706	6,088	6,403	6,713	7,030	7,376	7,740	8,137	8,528	8,945	9,442	9,995	10,428
<b>Ratio</b>	0.021	0.024	0.029	0.028	0.021	0.020	0.013	0.009	0.004	0.000	+0.011	+0.008	0.015
<b>Actual Budget Deficit</b>	\$221	\$269	\$290	\$255	\$203	\$164	\$107	\$22	\$+69	\$+126	\$+236	\$+127	\$158
<b>Actual GDP</b>	5,738	5,928	6,222	6,561	6,949	7,323	7,700	8,194	8,655	9,141	9,715	10,032	10,337
<b>Ratio</b>	0.039	0.045	0.047	0.039	0.029	0.022	0.014	0.003	+0.008	+0.014	+0.024	+0.013	0.015

Source: Congressional Budget Office (January 2003).

The positive growth in aggregate reserves over 2001-2003 to-date is also in response to the aggressive easing of monetary policy by the Federal Reserve as it attempts to accelerate the growth in aggregate demand. The continued rapid growth of the monetary base reflects in part the growth in reserves. However, it mainly reflects the growth in paper currency in circulation since about 90% of the base is accounted for by currency (the great portion of which does not circulate in the United States). Thus, four of the quantity measures of monetary policy have recorded a rising rate of growth.

**Table 9. The Growth Rates of the Monetary Aggregates**

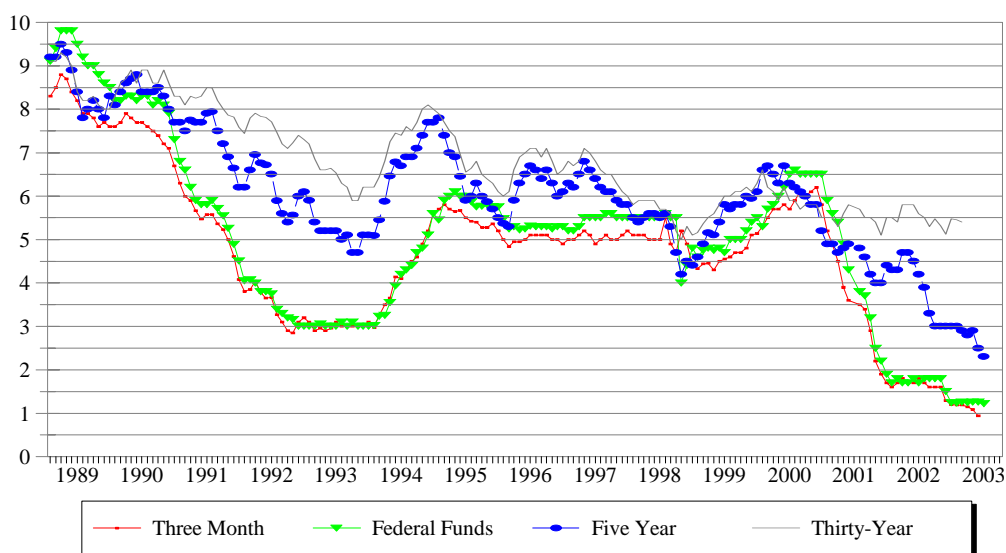
(annualized rates of change)

<b>Time Period</b>	<b>Aggregate Reserves</b>	<b>Monetary Base</b>	<b>M1</b>	<b>M2</b>	<b>M3</b>
88:12-89:12	0.8%	4.2%	0.8%	5.4%	4.0%
89:12-90:12	3.1	9.5	4.0	3.8	1.6
90:12-91:12	9.0	8.3	8.7	3.0	1.3
91:12-92:12	19.6	10.5	14.3	1.6	0.3
92:12-93:12	11.3	10.5	10.3	1.6	1.4
93:12-94:12	- 1.8	8.2	1.8	0.4	1.7
94:12-95:12	-5.0	3.9	-2.0	4.1	6.0
95:12-96:12	-11.2	4.0	-4.1	4.7	7.3
96:12-97:12	-6.6	6.1	-0.7	5.7	9.1
97:12-98:12	-3.5	7.0	2.2	8.8	11.0
98:12-99:12	-7.6	15.3	2.3	6.0	8.3
99:12-00:12	-7.3	-1.5	-3.0	6.2	8.6
00:12-01:12	6.7	8.7	8.3	10.5	12.9
01:12-02:12	2.8	7.2	3.2	6.5	6.5
02:12-03:07	16.3	5.5	9.7	9.1	8.2

Source: Board of Governors of the Federal Reserve System.

The growth in the reserves of depository institutions results to a large degree from decisions to move the key federal funds' interest rate (shown in **Figure 2**), the principal tool of monetary policy. These moves have been motivated primarily by a desire to bring the economy to full employment and then keep it growing at a rate sufficient to maintain full employment. From time to time, other factors may influence the movement of this rate. For example, the turmoil in both domestic and international financial markets cause the rate to be reduced 1/4% on September 29, October 15, and November 17, 1998 at which point it stood at 4.75%. In three equal moves of 1/4% during June, August, and November 1999, the rate was returned to its pre-crisis level of 5.5%. On both February 2 and March 21, 2000, in the face of mounting evidence that the economy was growing at an unsustainable rate, the federal funds rate was raised an additional 1/4%, and on May 16 it was raised 1/2%, bringing the rate to 6.5%. In six equal cuts of 1/2% (January 3 and 31, March 20, April 18, May 15 and June 27), and a seventh cut of 1/4% (August 21), the rate was reduced to 3.50%. In response to the 9/11 terrorist attacks, the rate was reduced to 3.0% on September 17 and in a further move toward easing, it was reduced to 2.5% on October 2, to 2.0% on November 6, and to 1.75% on December 11. For most of 2002, the FOMC did not make additional cuts in its federal funds target rate because it wanted to wait and see how strong economic activity would be following the dramatic cuts in 2001. Toward the end of the year (November 6, 2002), the target was reduced to 1.25% in the face of a softening in demand growth. For most of the first half of 2003, assessment of the underlying strength of the economy was obscured by temporary dampening effects related to the geopolitical tensions earlier in the year. With these effects diminishing, it became apparent that sustained growth had not yet resulted. On June 25, 2003, the target federal funds rate was lowered to 1% in order to provide further support to the economy. Disinflation had also become a concern – although minor. The FOMC did not alter its stance at its next meeting, on August 12.

**Figure 2. Yield on Selected U.S. Treasury Securities and Federal Funds (%)**



Source: Board of Governors of the Federal Reserve System.

As **Figure 2** shows, movements in short-term interest rates mimic closely movements in the federal funds rate. This is not as true for longer-term rates. Their rise and fall as well as the magnitude of their shifts is often different from the timing and magnitude of shifts in the federal funds rate. This is due in part to the fact that they respond to the longer run outlook for inflation, the financing requirements necessitated by the budget deficit, both current and prospective, and the international flow of capital.

## Economic Forecasts, 2002-2003

The forecasts in **Table 10** come from three sources. OMB and CBO are well known. BC stands for the Blue Chip Economic Indicators, a firm that collects the forecasts from about 50 forecasters in finance, business, and universities. BC Con represents the consensus or average forecasts of this group. BC T-10 is the average of the high ten among these forecasts, while BC B-10 is the average of the low ten forecasts.

The overall view taken by the forecasts summarized in **Table 10** is that a somewhat higher rate of GDP growth will occur during 2003, with a strong pick-up coming in the second half of the year. The pace in the second half of 2003 is expected to be over twice that in the first half. Growth is forecast to approach 4% over the next few quarters. The rate of GDP growth, according to the consensus forecast, however, will be insufficient to have much of an effect on the unemployment rate. The consensus forecast anticipates that the unemployment rate will begin to come down gradually starting early next year. The inflation rate for the entire economy (as measured by the GDP price index) is expected to remain below 2.0%. Inflation as measured by the fixed market basket of the Consumer Price Index for all Urban Consumers is forecast to accelerate by over half a percentage point to slightly below 2.5%. Both short-term and long-term interest rates are expected to be at or slightly below their 2002 levels.

The Chairman of the Board of Governors of the Federal Reserve presented the economic projections of the Federal Reserve Board of Governors and Federal Reserve District Bank Presidents for 2003 and 2004 in testimony before the House Financial Services Committee on July 15, 2003, and the Senate Banking Committee on July 16, 2003. The Federal Reserve projections for 2003 are that from the fourth quarter 2002 to the fourth quarter 2003, real GDP will grow between 2.5% and 2.75% and that prices<sup>10</sup> will increase about 1.25% to 1.50%. The civilian unemployment rate is projected to be between 6.0% and 6.25% during the fourth quarter of the year. For 2004, real GDP is expected to grow between 3.75% and 4.75%, prices to rise between 1.0% and 1.5% and the unemployment rate in the fourth quarter to average from 5.5% to 6.0%.

From its June 2003 survey of 54 economic forecasters, the *Wall Street Journal* reported that, on average, they expect GDP to grow at annual rates of 3.5%, 3.8%, 3.8% and 3.7% over the last two quarters of 2003 and the first two quarters of 2004. For the year ending in November 2003, the CPI, on average, is expected to rise by 1.9% and the unemployment rate is expected to average 6.1% in November.

---

<sup>10</sup> In its Monetary Report to Congress, the Board of Governors of the Federal Reserve System features in its projections a measure of inflation known as the Personal Consumption Expenditure (PCE) chain-type price index. This price index attempts to measure inflation with regard to consumer spending.

**Table 10. Economic Forecasts 2003 - 2004**

	2002		2003				2002*	2003	2004
	3*	4*	1*	2	3	4			
<b>Nominal GDP<sup>a</sup></b>									
OMB	5.1	3.1	3.8	NA	NA	NA	3.6	4.0	5.0
CBO	5.1	3.1	3.8	NA	NA	NA	3.6	4.2	5.4
BC T-10	5.1	3.1	3.8	4.9	6.8	6.9	3.6	4.2	6.0
BC Con.	5.1	3.1	3.8	3.3	4.9	5.2	3.6	3.9	5.1
BC B-10	5.1	3.1	3.8	1.8	2.9	3.3	3.6	3.7	4.2
<b>Real GDP<sup>a</sup></b>									
OMB	4.0	1.4	1.4	NA	NA	NA	2.4	2.3	3.7
CBO	4.0	1.4	1.4	NA	NA	NA	2.4	2.5	3.6
BC T-10	4.0	1.4	1.4	2.6	4.7	4.8	2.4	2.5	4.3
BC Con.	4.0	1.4	1.4	1.9	3.6	3.8	2.4	2.3	3.7
BC B-10	4.0	1.4	1.4	1.2	2.4	2.9	2.4	2.1	3.1
<b>Unemployment<sup>b</sup></b>									
OMB	5.7	5.9	5.8	6.2	NA	5.6	5.8	5.9	5.6
CBO	5.7	5.9	5.8	6.2	NA	NA	5.8	5.9	5.7
BC T-10	5.7	5.9	5.8	6.2	6.3	6.3	5.8	6.2	6.2
BC Con.	5.7	5.9	5.8	6.2	6.1	6.1	5.8	6.1	5.9
BC B-10	5.7	5.9	5.8	6.2	6.0	5.9	5.8	6.0	5.6
<b>GDP Price Index (chain-weighted)<sup>a</sup></b>									
OMB	1.0	1.6	2.4	NA	NA	NA	1.1	1.6	1.2
CBO	1.0	1.7	2.4	NA	NA	NA	1.1	1.6	1.7
BC T-10	1.0	1.7	2.4	2.3	2.1	2.1	1.1	1.7	2.1
BC Con.	1.0	1.7	2.4	1.4	1.3	1.4	1.1	1.6	1.5
BC B-10	1.0	1.7	2.4	0.6	0.5	0.4	1.1	1.4	0.7
<b>CPI-U<sup>a</sup></b>									
OMB	2.2	2.0	3.8	NA	NA	NA	1.6	2.3	1.7
CBO	2.2	2.0	3.8	NA	NA	NA	1.6	2.3	2.2
BC T-10	2.2	2.0	3.8	1.7	2.2	2.4	1.6	2.4	2.5
BC Con.	2.2	2.0	3.8	0.6	1.4	1.7	1.6	2.2	1.8
BC-10	2.2	2.0	3.8	-0.6	0.5	0.9	1.6	2.0	1.0
<b>T-BILL Interest Rate (3 month)<sup>b</sup></b>									
OMB	1.7	1.3	1.2	1.1	NA	NA	1.6	1.2	2.0
CBO	1.7	1.3	1.2	1.1	NA	NA	1.6	1.4	3.5
BC T-10	1.7	1.3	1.2	1.1	1.2	1.3	1.6	1.2	2.0
BC Con.	1.7	1.3	1.2	1.1	1.0	1.0	1.6	1.0	1.5
BC B-10	1.7	1.3	1.2	1.1	0.8	0.8	1.6	1.0	1.0

	2002		2003				2002*	2003	2004
	3*	4*	1*	2	3	4			
10-year Treasury Note <sup>b</sup>									
OMB	4.3	4.0	3.9	3.6	NA	NA	4.6	3.7	4.1
CBO	4.3	4.0	3.9	3.6	NA	NA	4.6	4.4	5.2
BC T-10	4.3	4.0	3.9	3.6	3.9	4.2	4.6	4.2	5.3
BC Con.	4.3	4.0	3.9	3.6	3.6	3.7	4.6	4.0	4.6
BC B-10	4.3	4.0	3.9	3.6	3.3	3.2	4.6	3.7	3.9

Sources: Blue Chip Economic Indicators, August 10, 2003. Congressional Budget Office, January, 2003; and, the Office of Management and Budget, July 2003.

\* Actual data, subject to revisions. The annual data for nominal GDP, real GDP, the GDP price index and the CPI are on a year over year basis; and the unemployment and interest rate data are either quarterly or annual averages. Some of the 2003 first quarter data is actual, but subject to revision.

<sup>a</sup> Annualized quarterly rates of change.

<sup>b</sup> Quarterly averages.

## Special Topics

### Accounting for GDP Growth

**Table 11** records contributions to growth in GDP from 1994 - 2003. These data record two interesting developments. First, investment spending played an important role in the 1991 - 2001 expansion. Its contribution to GDP growth was unusually large during most of that period. And among the categories of investment, outlays for personal computers were important. This bodes well for the longer run growth in productivity. Second, purchases by all levels of government played only a small role in that expansion. The relative contribution of consumption did not change significantly during this period, although it continued to be the largest single contributor to GDP growth.

**Table 11. Accounting for GDP Growth: 1994 through 2003**

	1994	1995	1996	1997	1998	1999	2000	2001	2002	2003
<b>Real GDP Growth*</b>	100.0%	100.0%	100.0%	100.0%	100.0%	100.0%	100.0%	**	100.0%	100.0%
<b>Consumption</b>	59.3	86.2	51.5	63.3	71.1	80.0	105.1		65.1	105.9
<b>Investment</b>	46.7	1.2	42.4	45.5	44.4	30.3	21.6		50.4	-20.3
<b>Govt. Purchases</b>	0.8	-6.8	12.0	10.2	10.1	16.3	7.3		23.6	40.1
<b>Net Exports</b>	-6.9	19.4	-5.9	-19.0	-25.6	-26.4	-34.0		-39.1	-25.7

Source: Department of Commerce.

\* Computed using real GDP at 1996 chained dollars on a 4<sup>th</sup> quarter over 4<sup>th</sup> quarter basis. For 2003, data for first half.

\*\* When the small change in GDP is compared with the large change in components, the resulting percentages are so large as to be meaningless.

## Promotion of Economic Growth: The Importance of Saving

Over the longer run, the economic well-being of a nation depends on the growth of potential output or GDP per capita. Crucial to this growth is the fraction of a nation's resources devoted to capital formation. The ability to add to the capital stock through investment depends on a nation's saving rate.

Saving comes from several sources. In the private sector individuals (households) and businesses are responsible for saving. The former save when all of their after tax income is not used for consumption. Businesses save through retained earnings and capital consumption allowances.

The public sector can also be a source of national saving and this occurs when government revenues are larger than expenditures. Budget surpluses, then, can be viewed as a source of national saving.

**Table 12** shows the sources of saving for the United States during the past 40 years. There are several things to note about these data. First, except for the decade of the 1990s, the gross private sector savings rate has averaged a remarkably stable 17%-19% of GDP, with most of the saving being done by businesses. More significantly, however, the private sector saving rate net of depreciation, representing saving available for additions to capital, declined considerably in the 1990s. The drop in the household (personal) savings rate has been the major factor in the decline in the private sector saving rate. Thus, even without a federal budget deficit, the United States would have had a "saving problem."

Second, over this 40-year period, the saving done by the public sector, as a whole, has declined. There is, however, diversity as to the contribution made by the level of government. The large negative contribution made by the federal government during the 1980s reflects the widely publicized budget deficit. Even though state and local governments have been running budget surpluses, they have not been large enough to offset the federal deficits. This has been reversed beginning in 1993. The improved budget position of the federal government has been adding to national saving.

Third, the data show that for 20 of these 40 years, the United States exported a small fraction of its savings to the rest of the world (i.e., was a net exporter of capital). This changed during the 1980s when the United States started to import the savings of the rest of the world.

The United States has been able to sustain its growth and standard of living since the 1980s because we have been able so far to attract sufficient capital (saving) from international investors. Without these saving, the United States has a "financing gap" in view of its domestic saving shortfall relative to its demand for investment capital. In the absence of sufficient capital, U.S. interest rates will have

to rise in order to restore balance between investment and a now smaller amount of saving. Higher interest rates will choke off investment and dampen U.S. growth<sup>11</sup>.

Should efforts to correct the international trade deficit prove fruitful, the net inflow of foreign saving will diminish or perhaps on net cease (that is, stabilize). Should this occur without a significant improvement in either the private sector saving rate or the negative saving rate of the public sector, the rate of new investment will fall to a very low level in the United States and with it the means for improving the well-being of future generations of Americans.

A sudden increase in the national saving rate is, however, not without some possible adverse consequences. In the short run, a sudden increase in the saving rate means decreased consumption and/or lower public sector net spending, both of which depress aggregate demand. Moreover, in either case, the demand for some types of output would fall to be replaced by an increased demand for other types of output. As a result, some industries and firms would have to contract while others expand. Resources would have to transit from declining to growing industries. These short-run dislocations should be borne in mind if a higher national saving rate becomes the object of public policy.

---

<sup>11</sup> See also CRS Report RL30534, *America's Growing Current Account Deficit: Its Causes and What It Means for the Economy*, by Marc Labonte and Gale Makinen; and CRS Report RL31032, *The U.S. Trade Deficit: Causes, Consequences, and Cures*, by Craig Elwell.

**Table 12. U.S. Saving By Sector**  
(as percent of GDP)

Year	Private Sector				Public Sector				Net Private & Pub. <sup>a</sup>	Net <sup>b</sup> Foreign
	Pers.	Bus.	Total	Net of Deprec.	Fed.	State & Local	Total	Net of Deprec.		
1960-9	5.7	11.4	17.1	9.6	2.2	1.7	4.0	1.3	10.9	-0.6
1970-9	6.8	11.6	18.4	9.8	-0.5	1.8	1.3	-1.2	8.6	-0.2
1980-9	6.7	12.6	19.2	9.0	-2.2	1.4	-0.8	-3.0	6.0	1.5
1990-9	4.3	12.5	16.9	6.8	-1.0	1.3	-0.3	-2.0	4.8	1.4
1984	7.8	13.2	21.0	11.0	-3.1	1.7	-1.4	-3.7	7.3	2.2
1985	6.7	13.1	19.8	9.8	-3.0	1.6	-1.4	-3.7	6.1	2.6
1986	6.0	12.1	18.1	8.0	-3.1	1.5	-1.6	-3.8	4.2	3.2
1987	5.3	12.3	17.7	7.6	-1.9	1.3	-0.6	-2.9	4.7	3.2
1988	5.7	12.7	18.5	8.4	-1.5	1.4	-0.1	-2.4	6.0	2.2
1989	5.5	11.9	17.4	7.3	-1.2	1.4	0.2	-2.0	5.3	1.6
1990	5.8	11.8	17.5	7.5	-1.8	1.1	-0.7	-2.9	4.6	1.2
1991	6.2	12.1	18.4	8.2	-2.4	1.0	-1.4	-3.7	4.5	-0.2
1992	6.5	12.1	18.4	8.3	-3.5	1.0	-2.5	-4.8	3.5	0.6
1993	5.3	12.1	17.5	7.5	-2.9	1.1	-1.8	-4.1	3.4	1.1
1994	4.5	12.3	17.0	6.9	-1.9	1.2	-0.6	-2.9	4.0	1.5
1995	4.1	12.8	17.1	7.1	-1.5	1.3	-0.1	-2.4	4.7	1.3
1996	3.5	13.0	16.5	6.5	-0.7	1.4	0.8	-1.5	5.0	1.4
1997	3.0	13.1	16.2	6.1	0.4	1.5	1.9	-0.3	5.8	1.5
1998	3.4	12.2	15.6	5.6	1.5	1.6	3.1	1.0	6.6	2.3
1999	1.9	12.7	14.6	4.4	2.2	1.6	3.8	1.6	6.0	3.4
2000	1.8	11.9	13.7	3.6	3.1	1.4	4.5	2.3	5.9	4.4
2001	1.7	12.2	13.9	2.9	1.7	0.9	2.6	0.4	3.3	3.8
2002	2.7	12.5	15.2	2.9	-1.0	0.7	-0.3	-2.4	0.5	4.7

Source: U.S. Department of Commerce.

<sup>a</sup> Equal to the sum of private sector saving net of depreciation and total public sector saving net of depreciation.

<sup>b</sup> Negative sign indicates the export of saving from the United States. Positive sign indicates the import of saving from abroad.